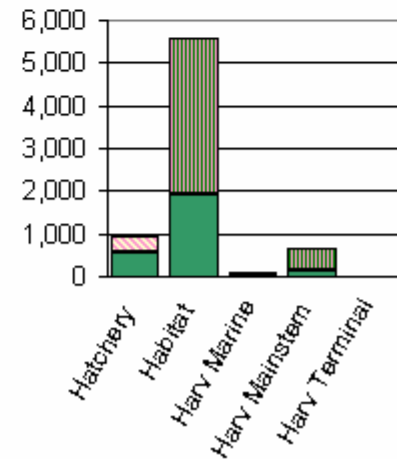
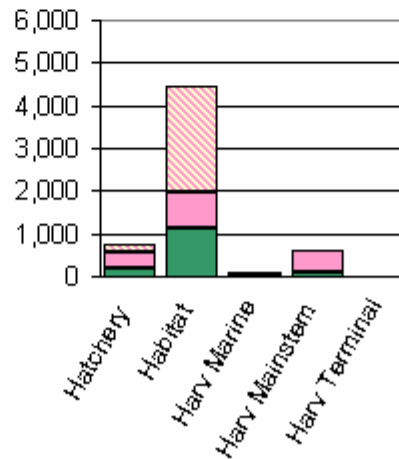
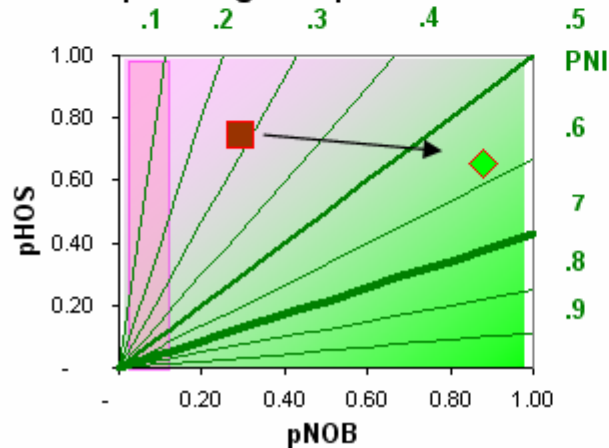


# AHA – All H-Analyzer

<i>Stock Name:</i>		<b>Wenatchee Spring Chinook</b>	<b>Current</b>		<b>Planned Condition</b>	
<b>Habitat:</b>	<b>Baseline Productivity   Capacity</b>	4.40	2,059	5.00	3,144	
<b>Hydro</b>	Passage Surv [Juv.   Adult]	0.65	0.9	0.67	0.9	
<b>Harvest:</b>	Harv.Rate -Marine [NORs HORs]	0.0134	0.0134	0.0134	0.0134	
	-Mainstem [NORs HORs]	0.0562	0.1162	0.0562	0.1162	
	-Terminal [NORs HORs]					
<b>Hatchery</b>	<b>Broodstock Composition</b>		pNOB	pHOS	pNOB	pHOS
	Goal		33%	42%	100%	100%
	Realized		29%	74%	88%	66%
	<b>Broodstock Origin</b>		Local	Import	Local	Import
	[Broodstock   Smolt Release]		550	978,478	550	978,478
HOR Destination [Hat   River]		15%	85%	10%	90%	
[Recruits/Spawner   Fitness Loss?]		8.2	y	8.2	y	

Realized Spawning Composition



# Stock - Subbasin – Province Roll-up

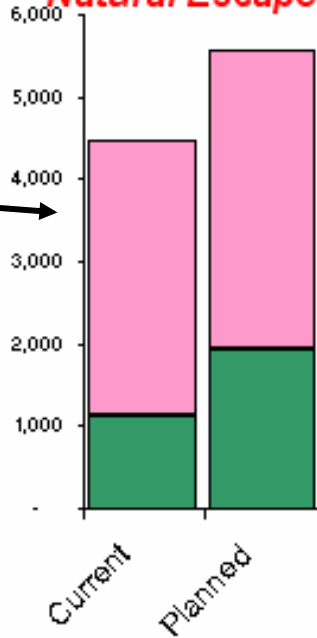
From AHA:

--Habitat improved through planned projects,

--Hatchery operations changed to integrate hatchery and natural

) - *Spring Chinook*

*Natural Escapement*



PROVINCE or ESU

Cascade

SUBBASIN

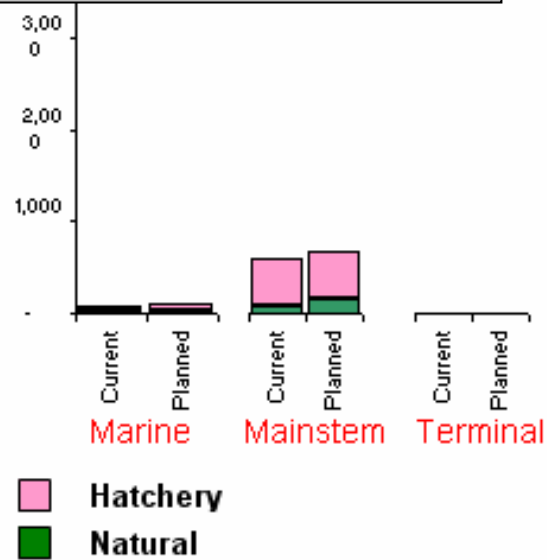
Wenatchee

SPECIES

Spring Chinook

SCENARIOS

Planned Condition



Improve habitat

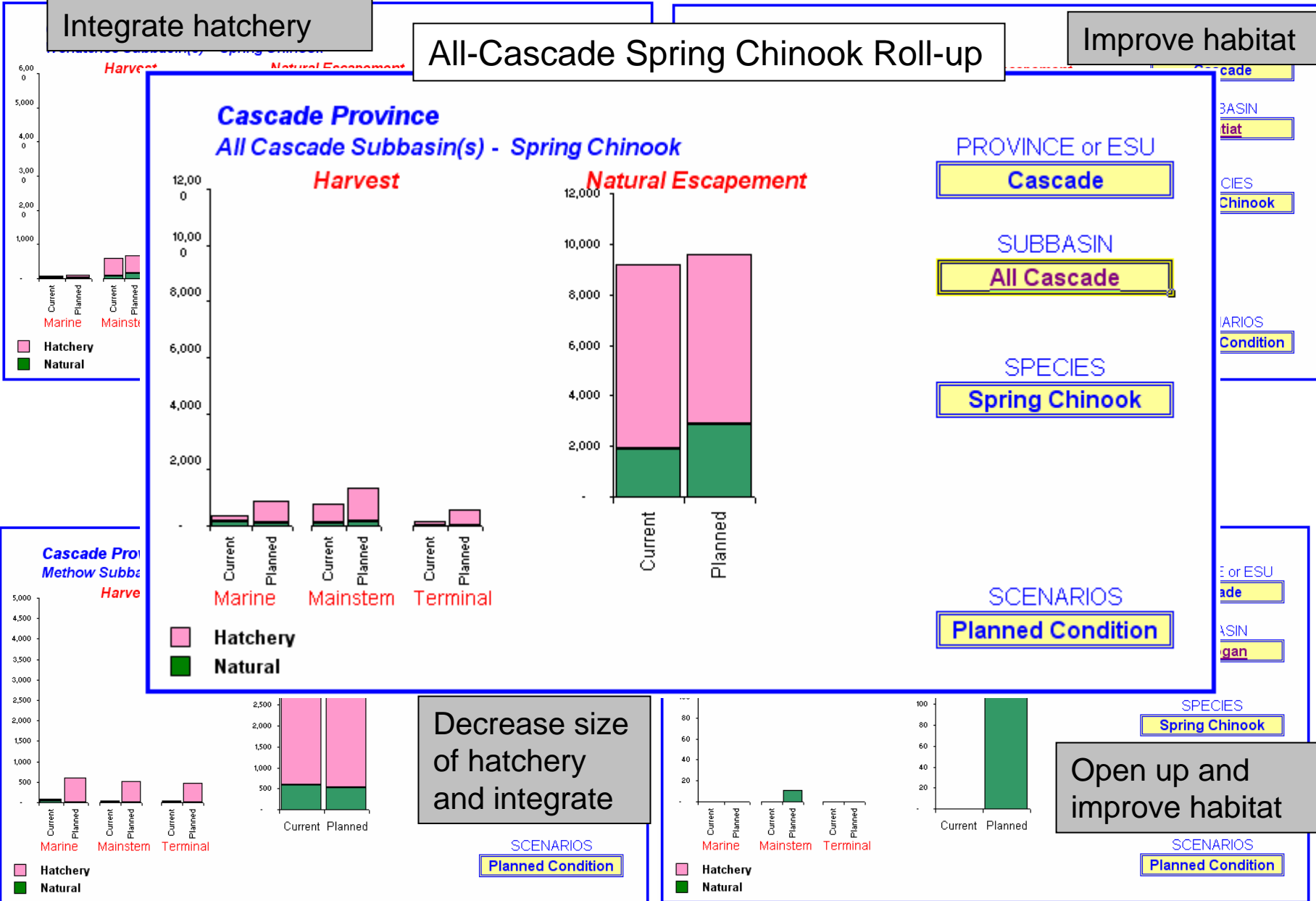
Decrease

Entiat

Integrate hatchery

# All-Cascade Spring Chinook Roll-up

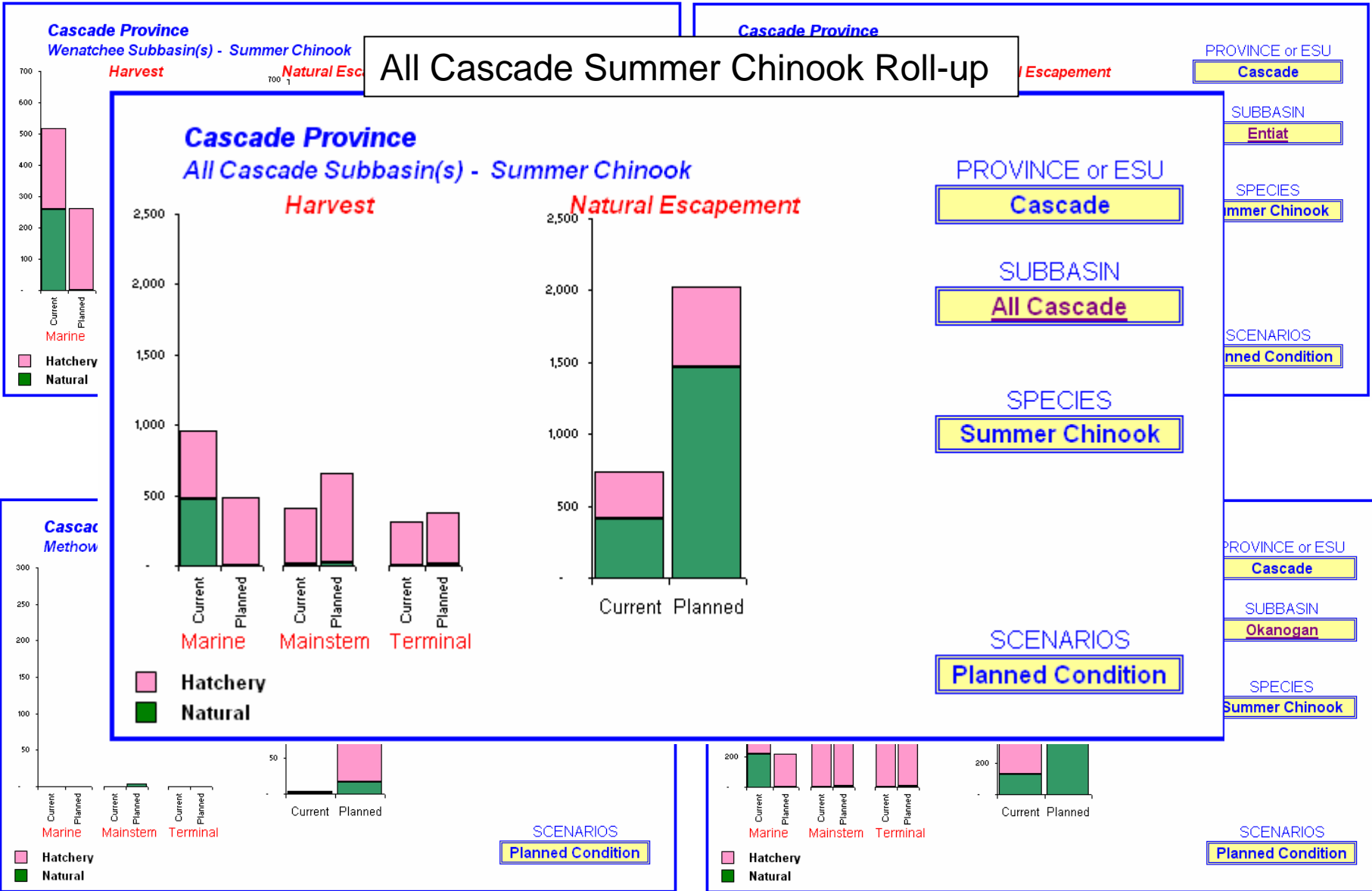
Improve habitat



# Wenatchee

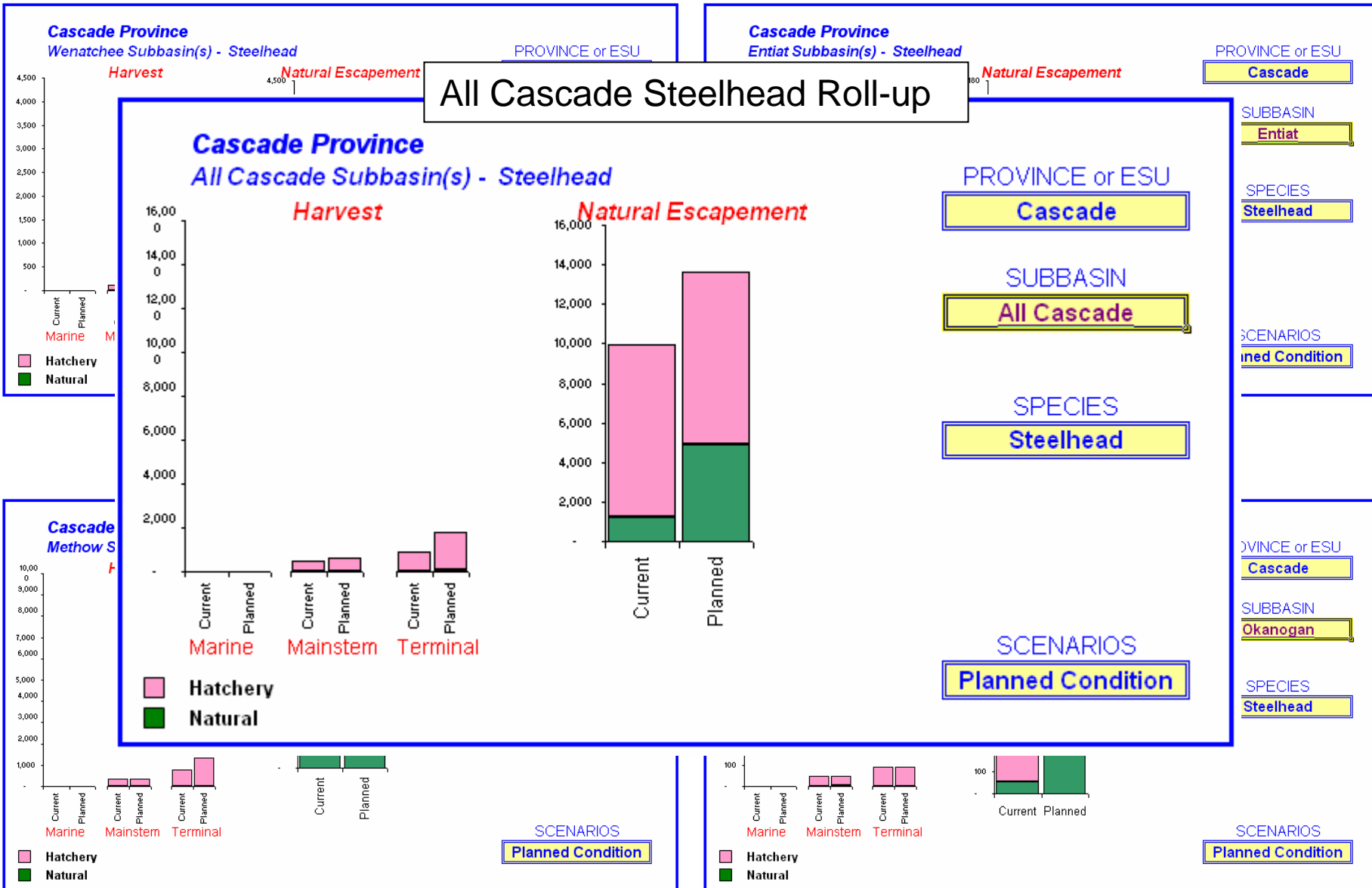
# Entiat

## All Cascade Summer Chinook Roll-up



# Wenatchee

# Entiat

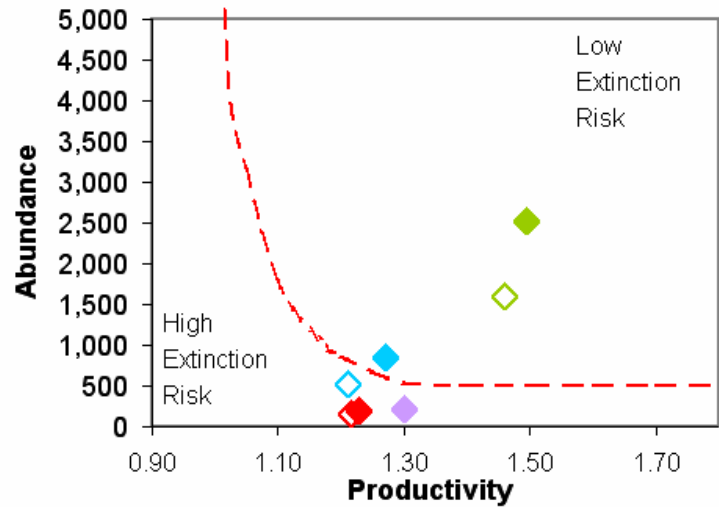


Province/ESU

Cascade Province

SPECIES

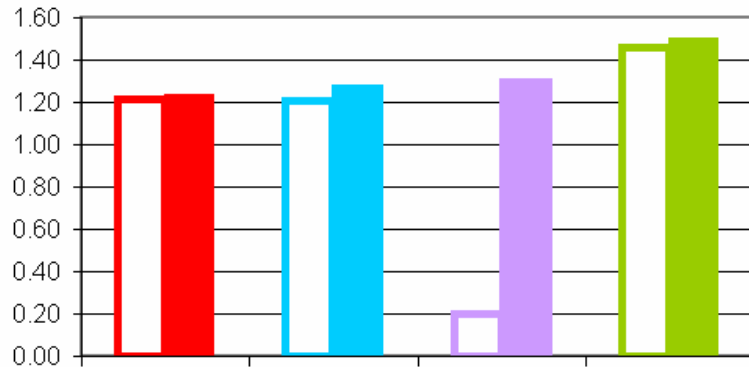
Spring Chinook



◇ Current    ◆ Planned    - - - Viability Levels

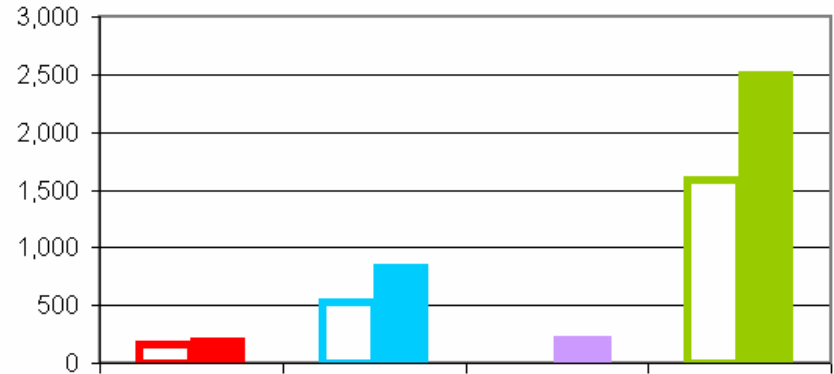
Productivity

Entiat    Methow    Okanogan    Wenatchee



Abundance

Entiat    Methow    Okanogan    Wenatchee

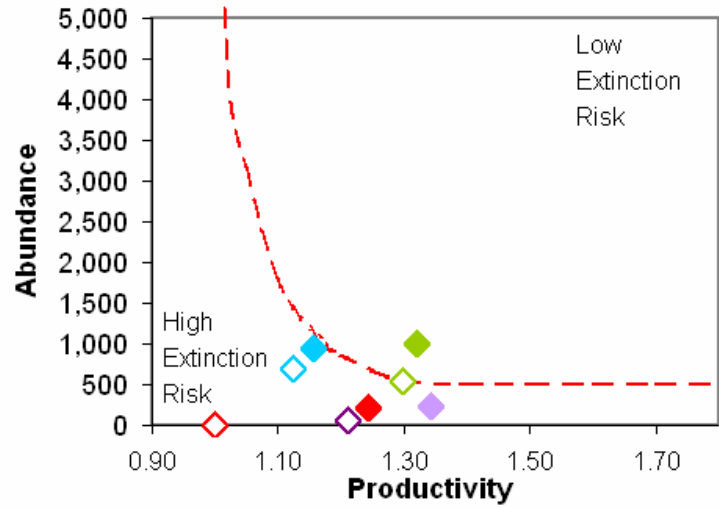


Province/ESU

Cascade Province

SPECIES

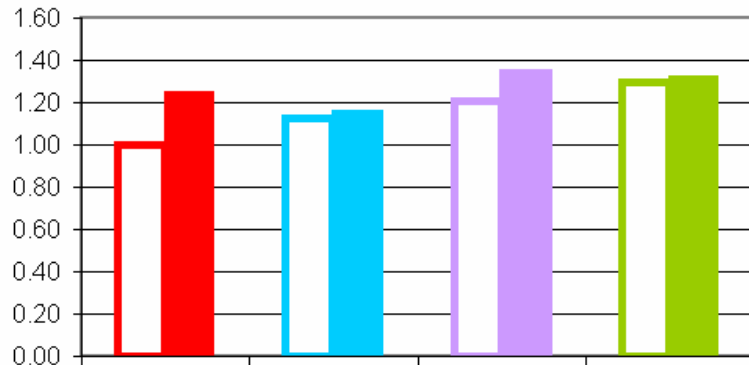
Summer Steelhead



◇ Current    ◆ Planned    - - - Viability Levels

Productivity

Entiat    Methow    Okanogan    Wenatchee



Abundance

Entiat    Methow    Okanogan    Wenatchee

