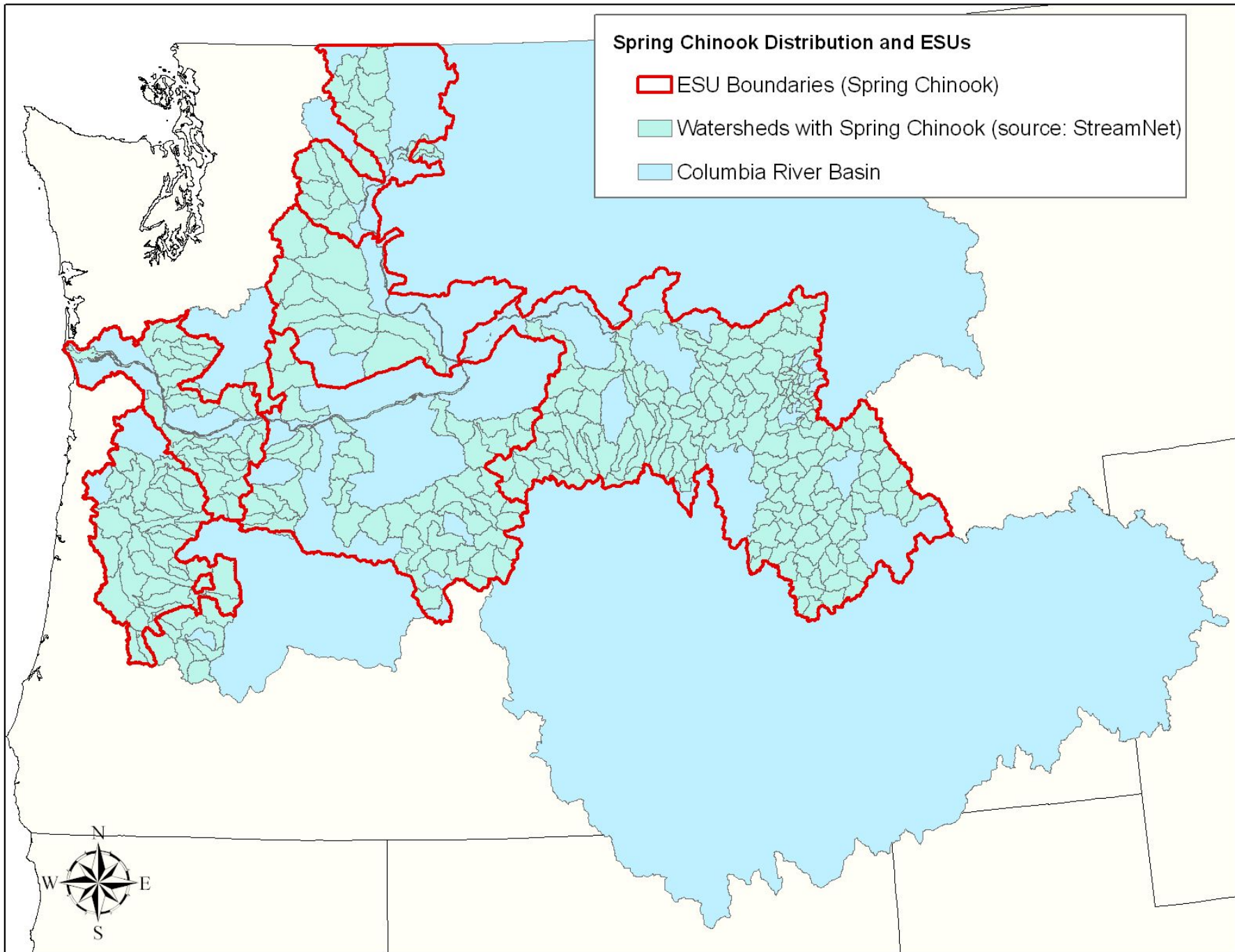


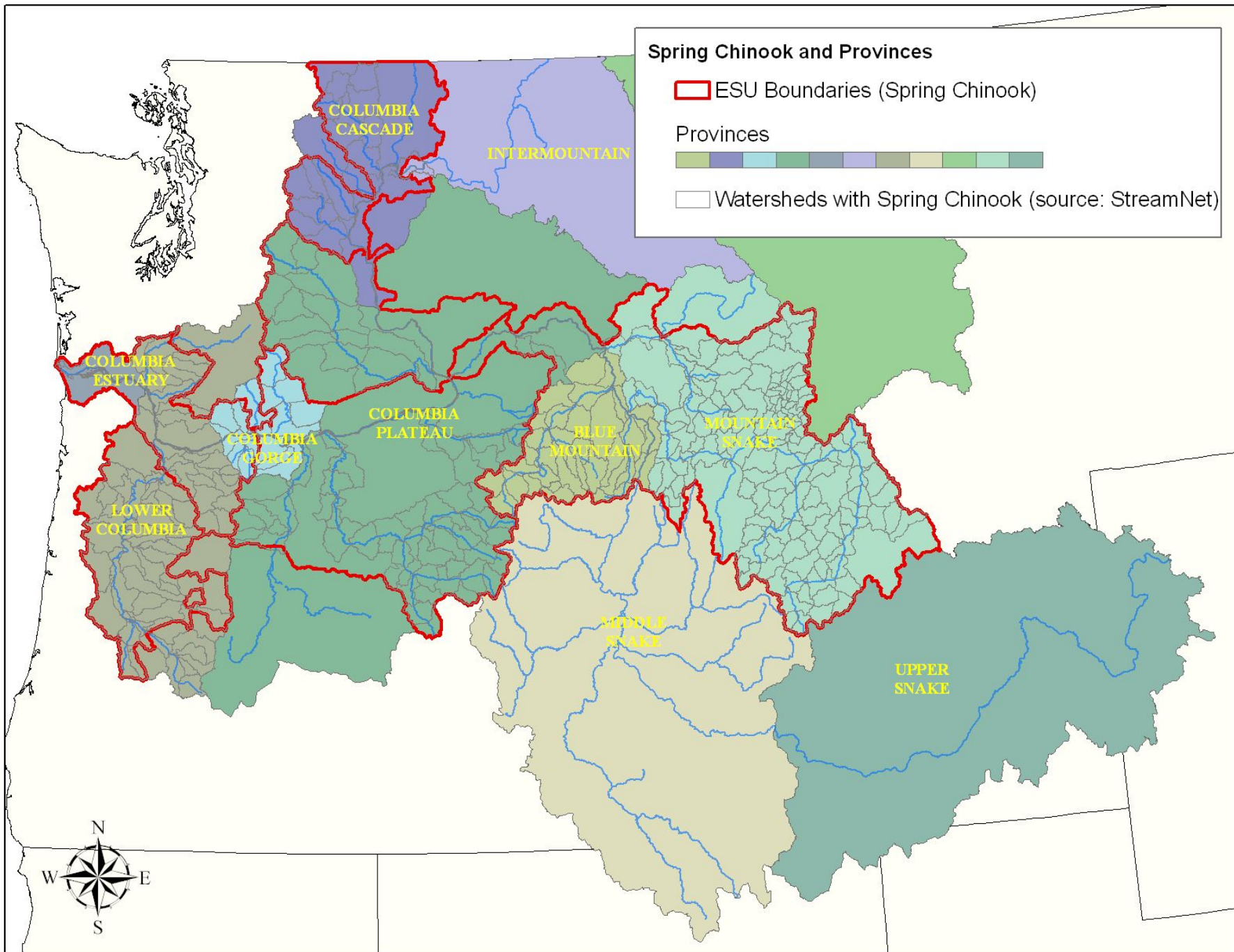
Spring Chinook Distribution and ESUs

 ESU Boundaries (Spring Chinook)

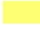




 Watersheds with Spring Chinook (source: StreamNet)

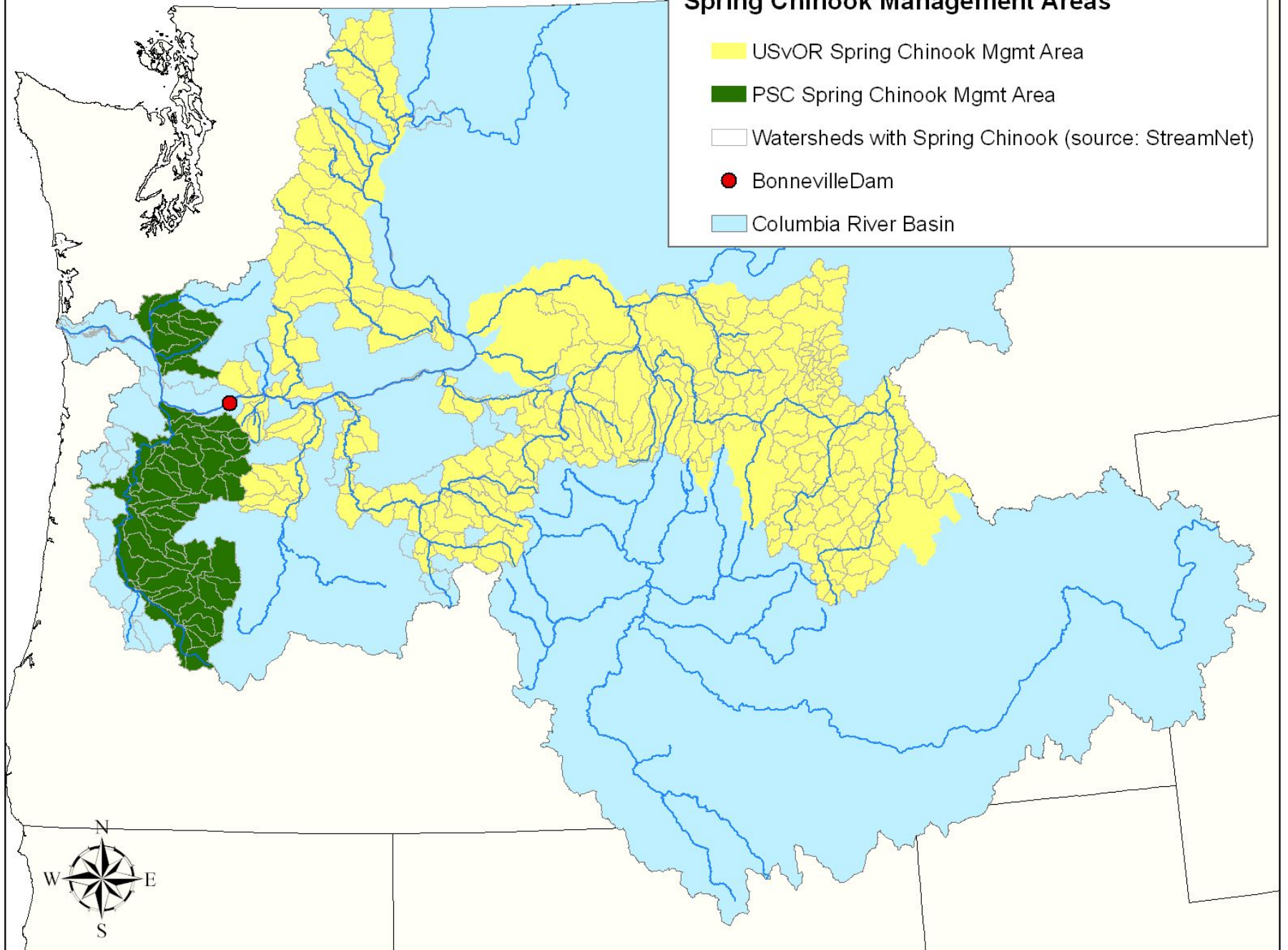
 Columbia River Basin

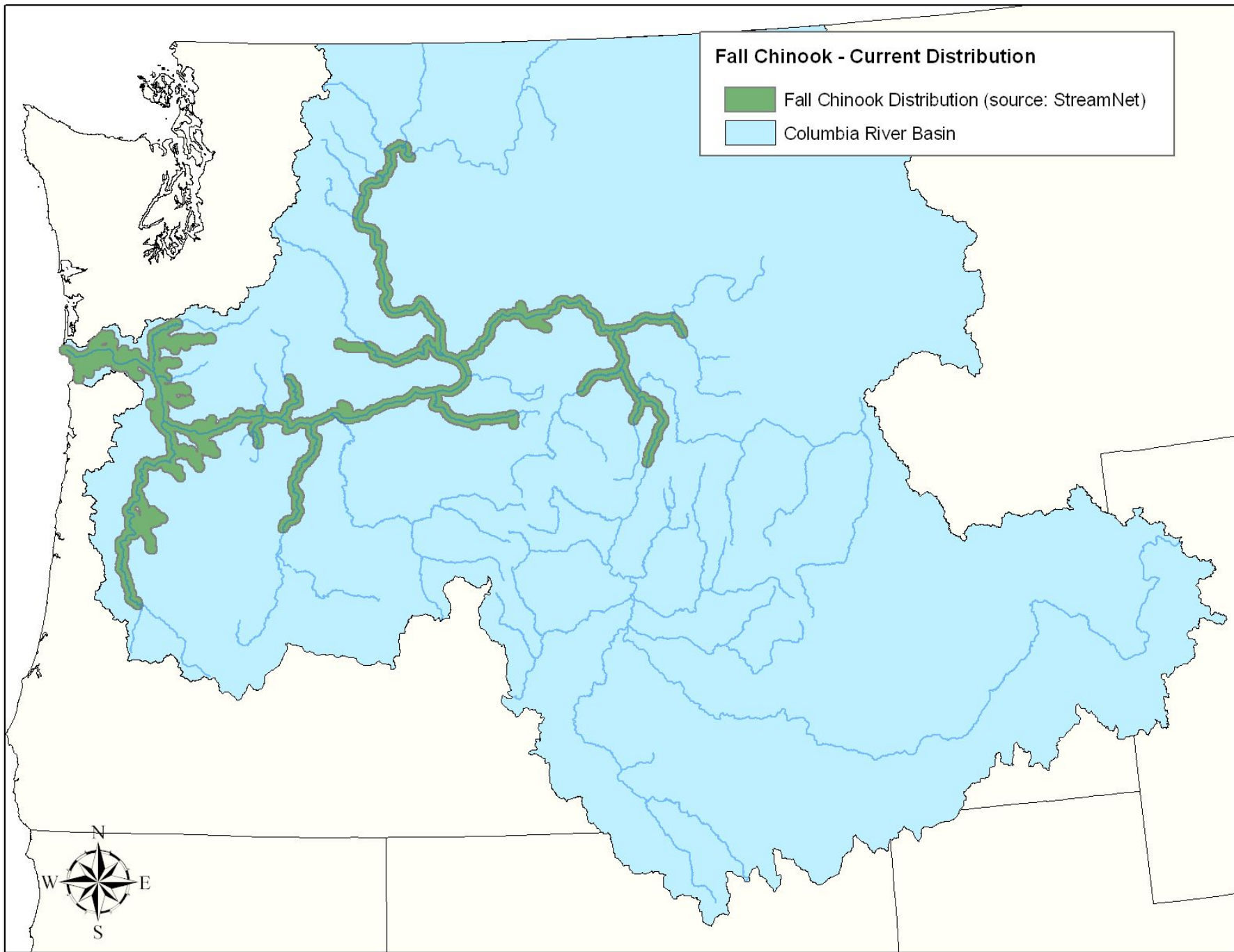


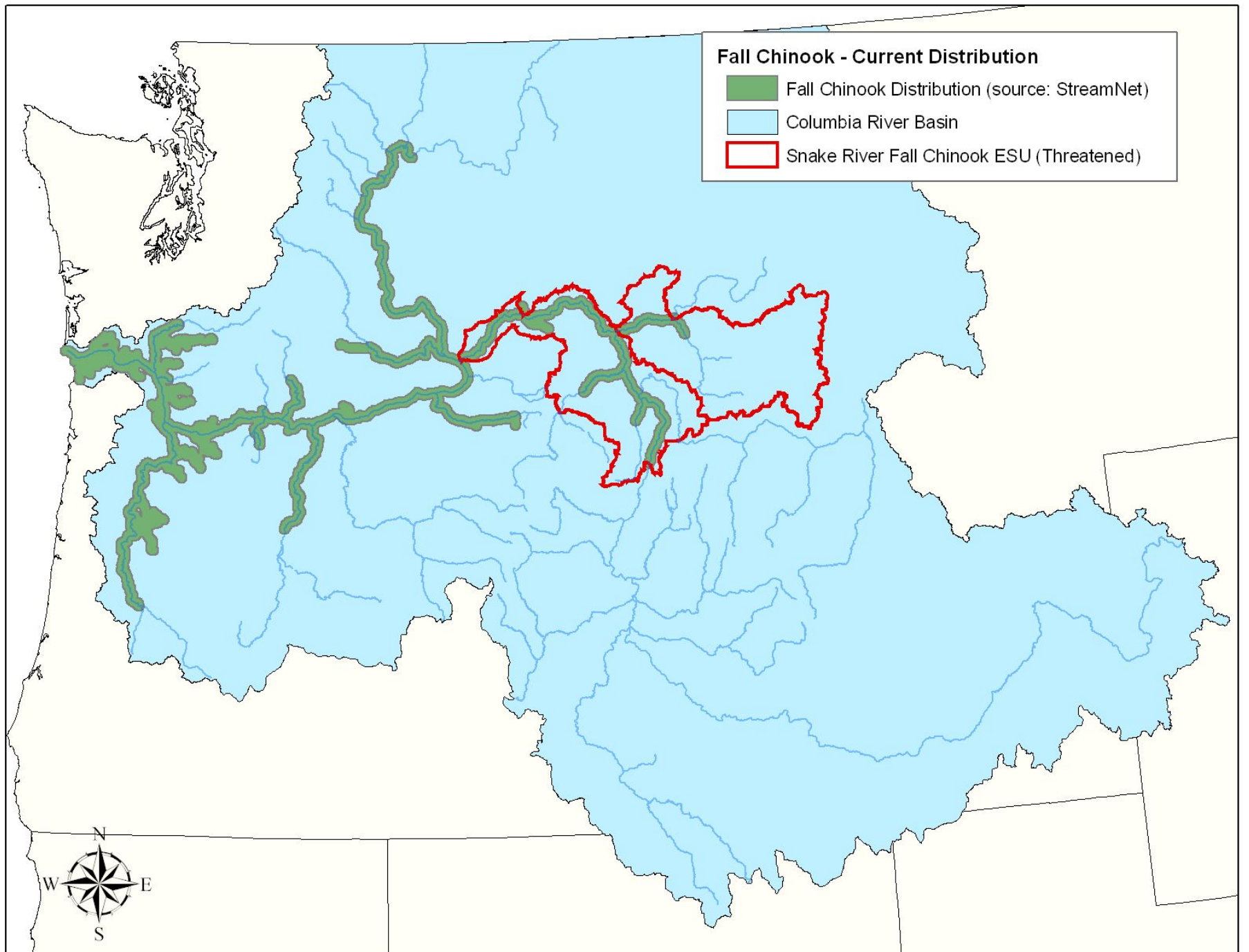


Spring Chinook Management Areas

-  USvOR Spring Chinook Mgmt Area
-  PSC Spring Chinook Mgmt Area
-  Watersheds with Spring Chinook (source: StreamNet)
-  BonnevilleDam
-  Columbia River Basin





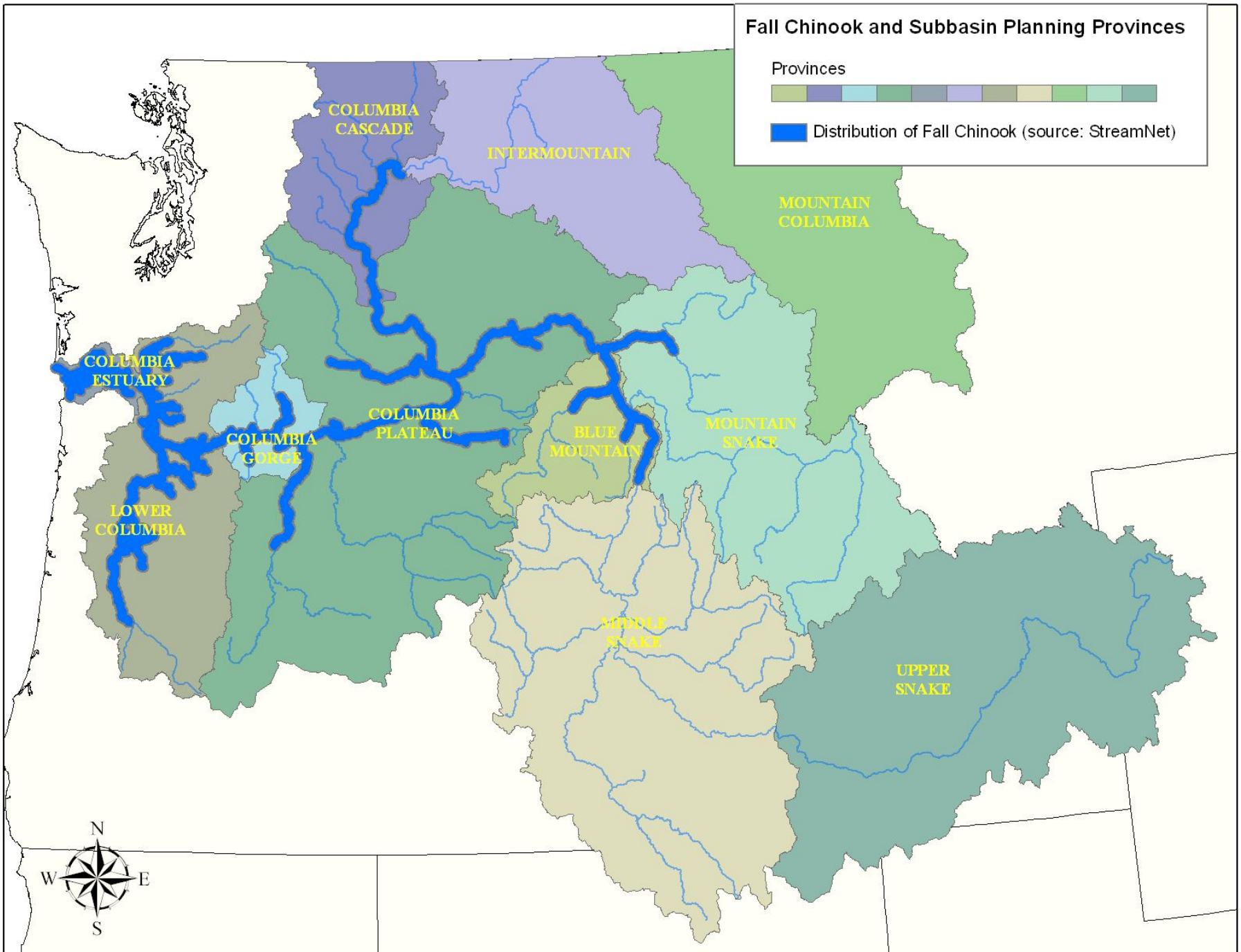


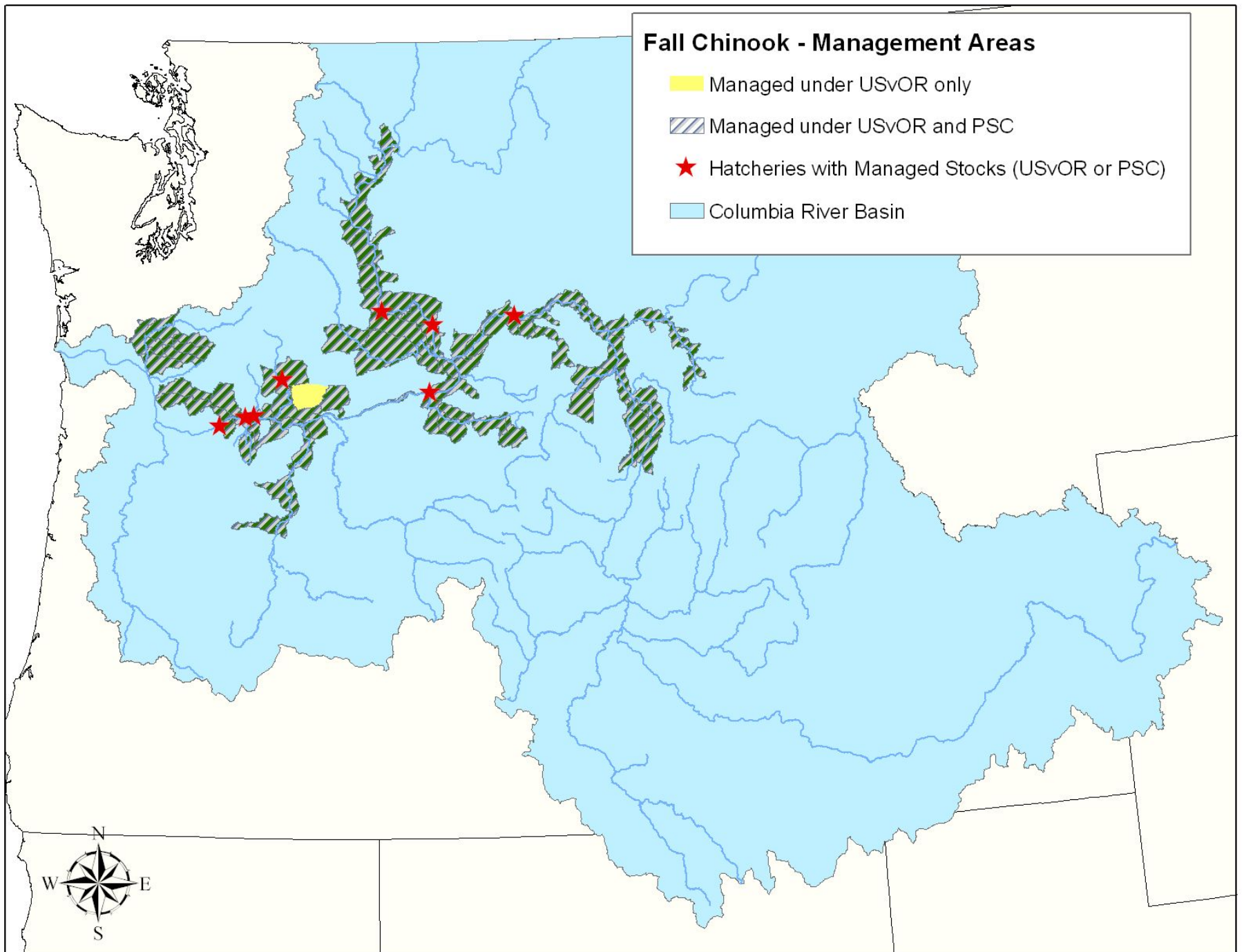
Fall Chinook and Subbasin Planning Provinces

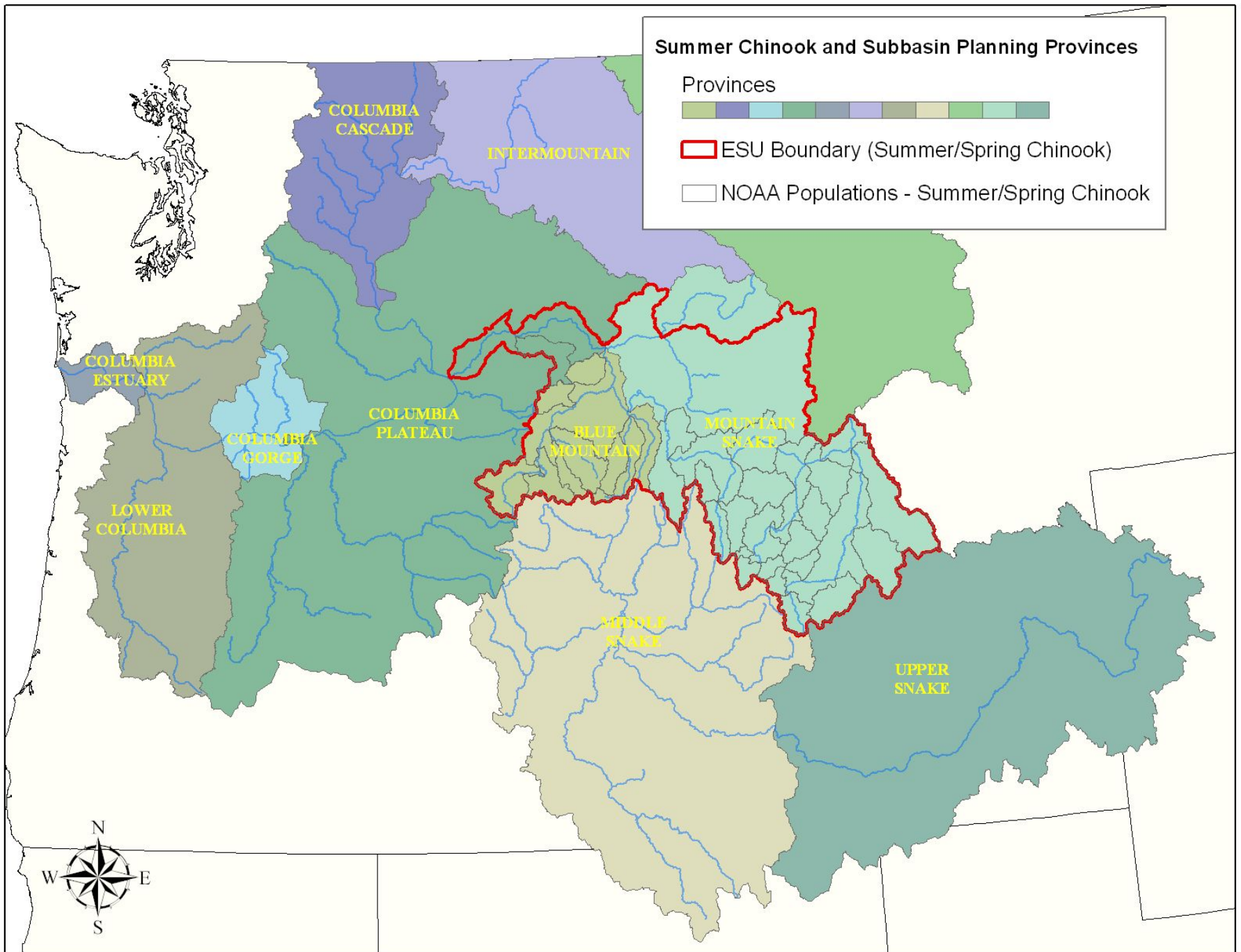
Provinces



 Distribution of Fall Chinook (source: StreamNet)

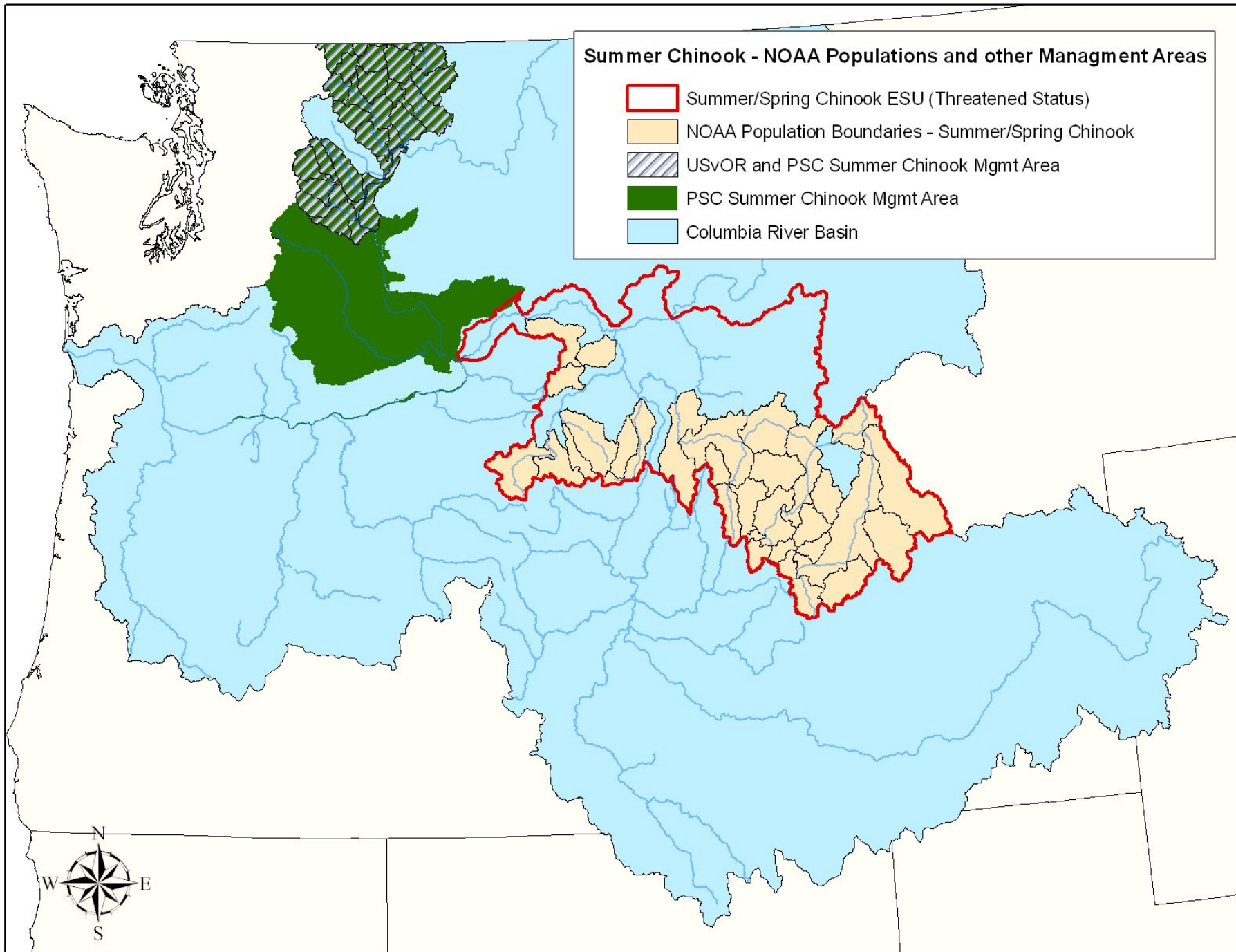


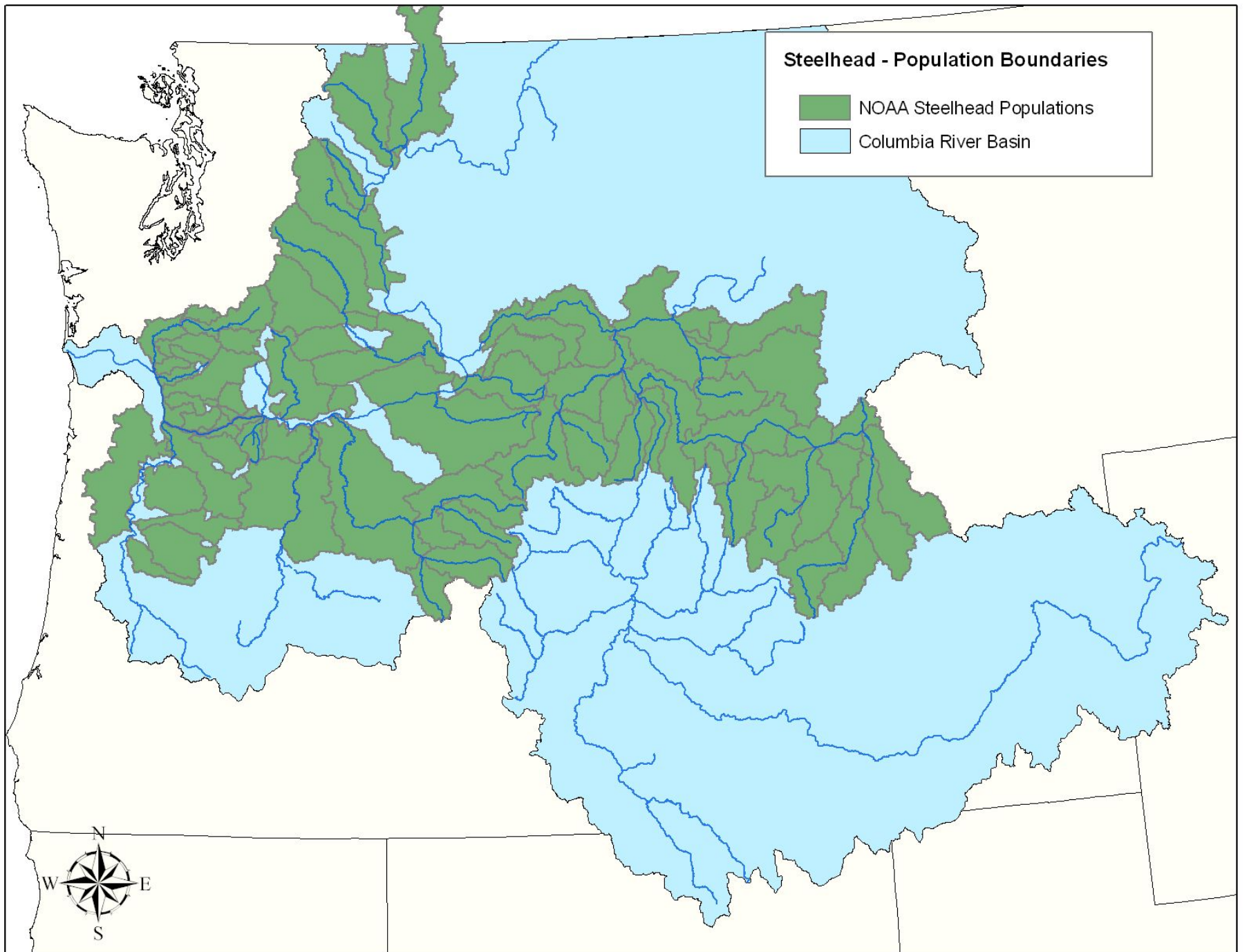




Summer Chinook - NOAA Populations and other Management Areas

-  Summer/Spring Chinook ESU (Threatened Status)
-  NOAA Population Boundaries - Summer/Spring Chinook
-  USvOR and PSC Summer Chinook Mgmt Area
-  PSC Summer Chinook Mgmt Area
-  Columbia River Basin

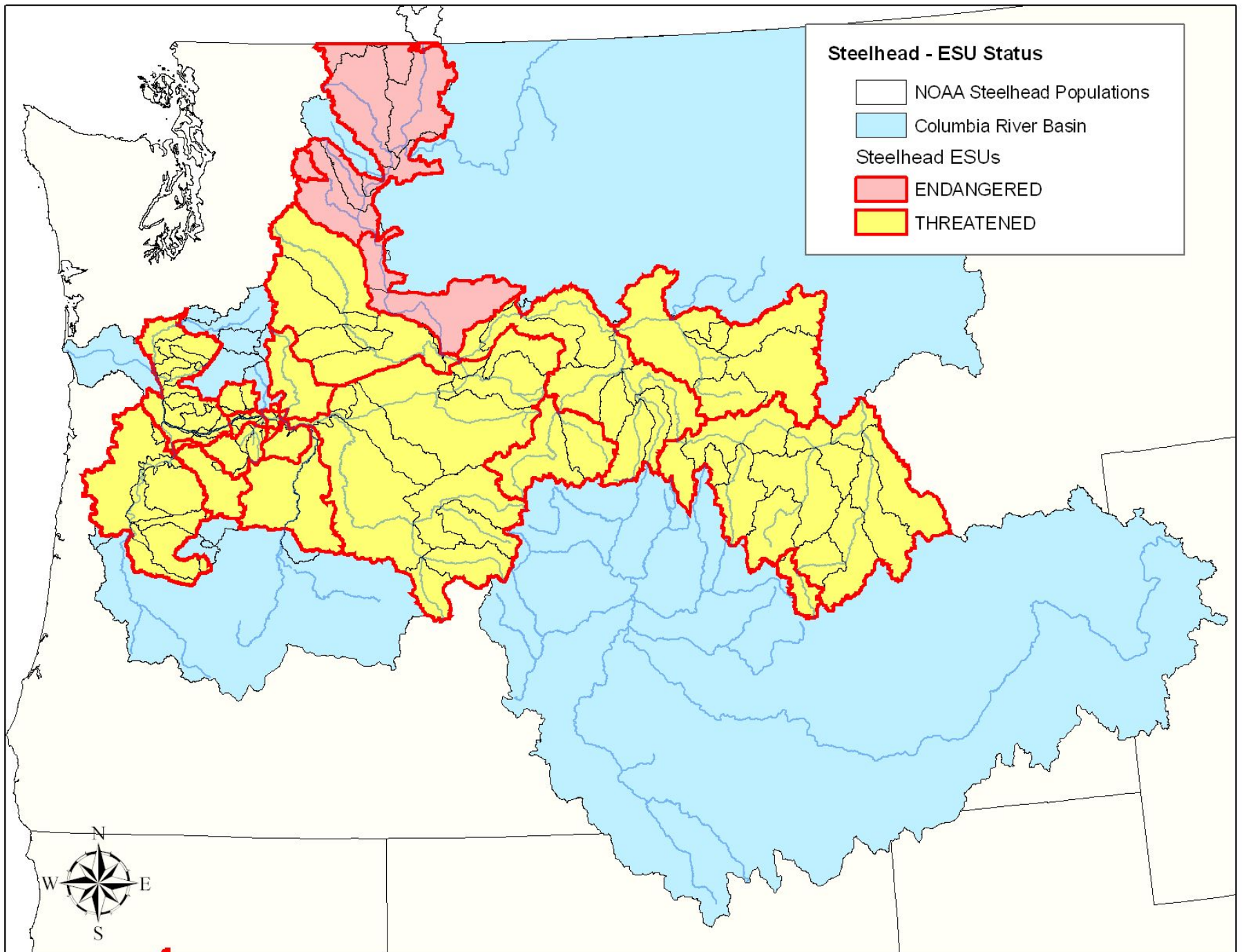




Steelhead - Population Boundaries

- NOAA Steelhead Populations
- Columbia River Basin

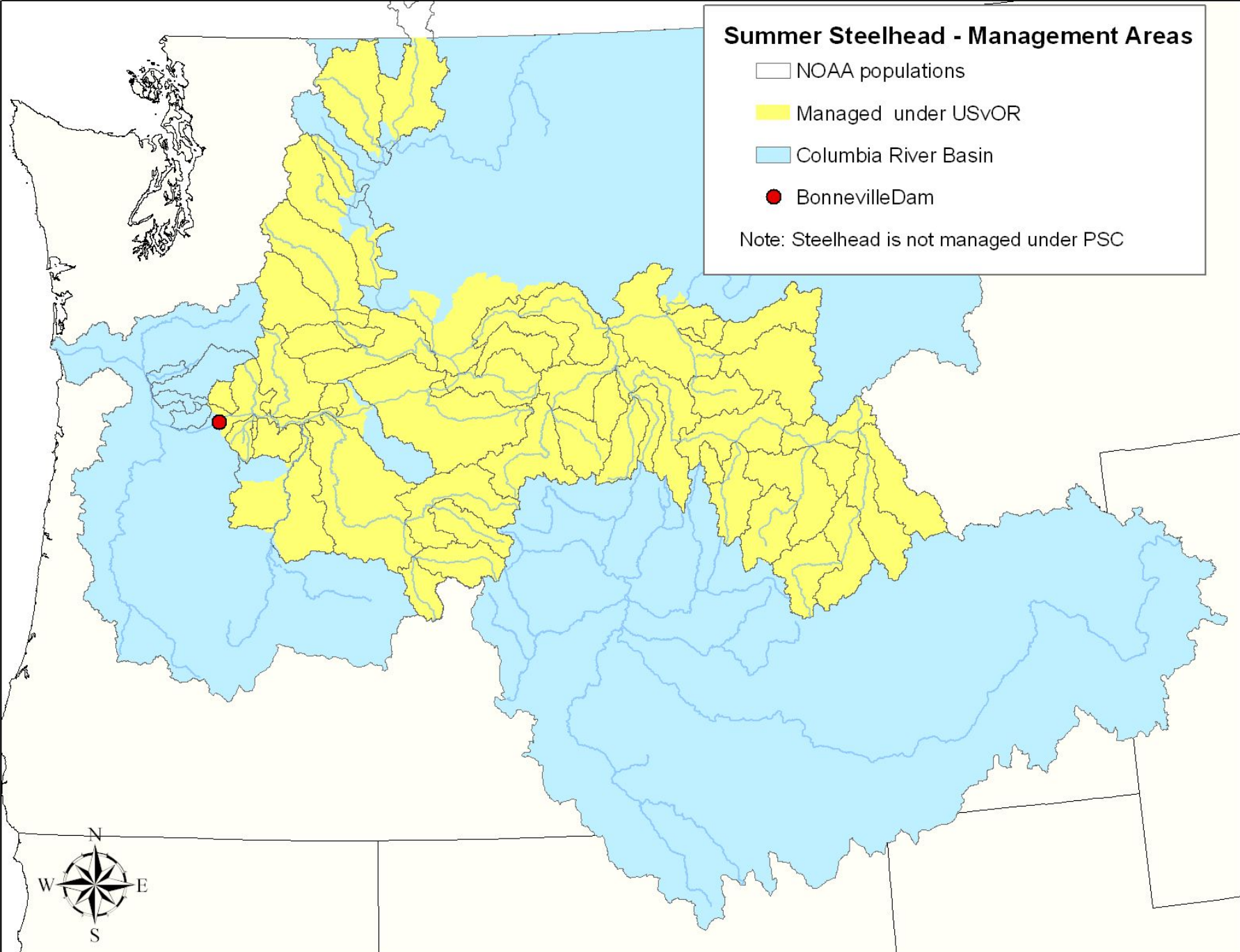


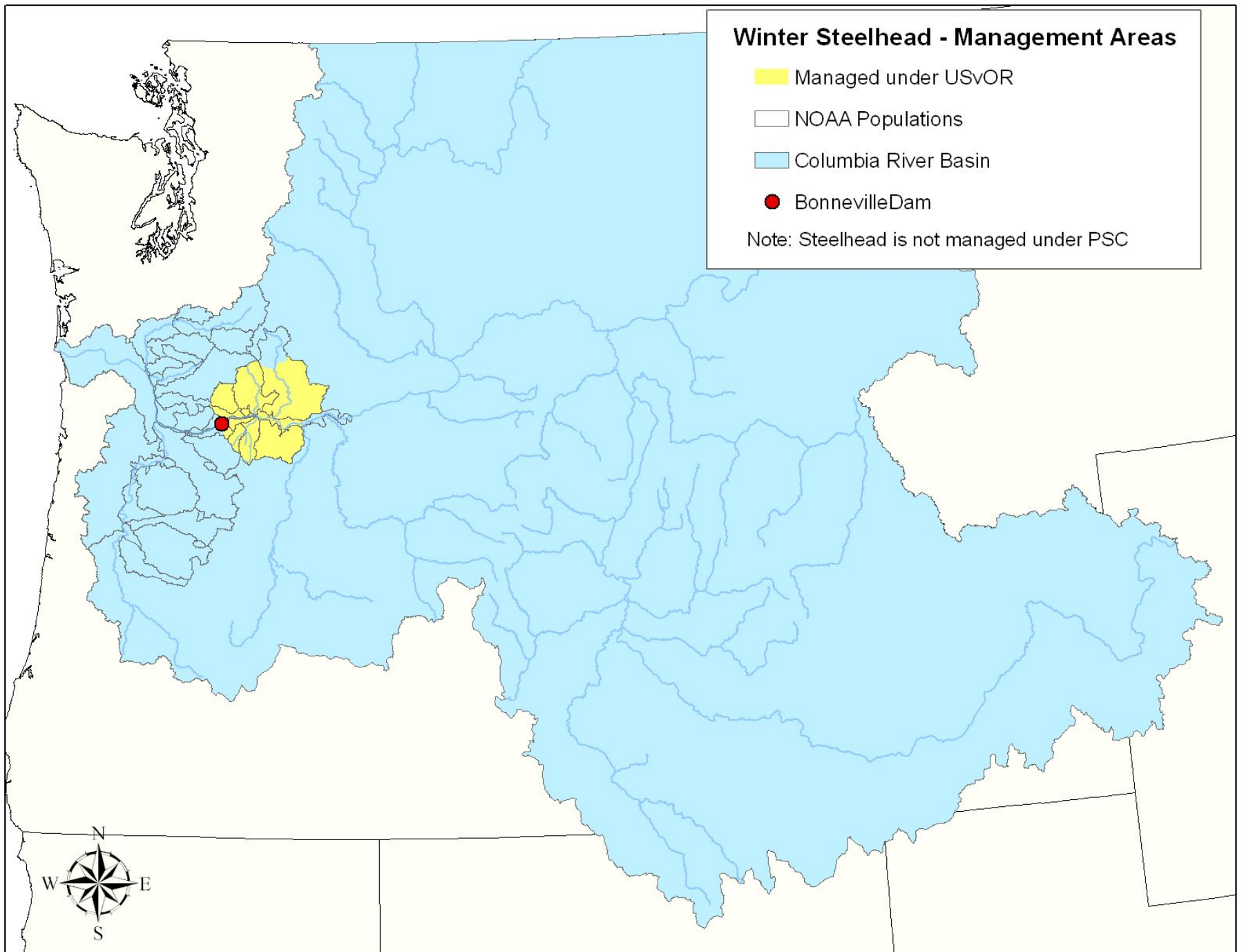


Summer Steelhead - Management Areas

- NOAA populations
- Managed under USvOR
- Columbia River Basin
- BonnevilleDam

Note: Steelhead is not managed under PSC

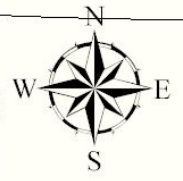


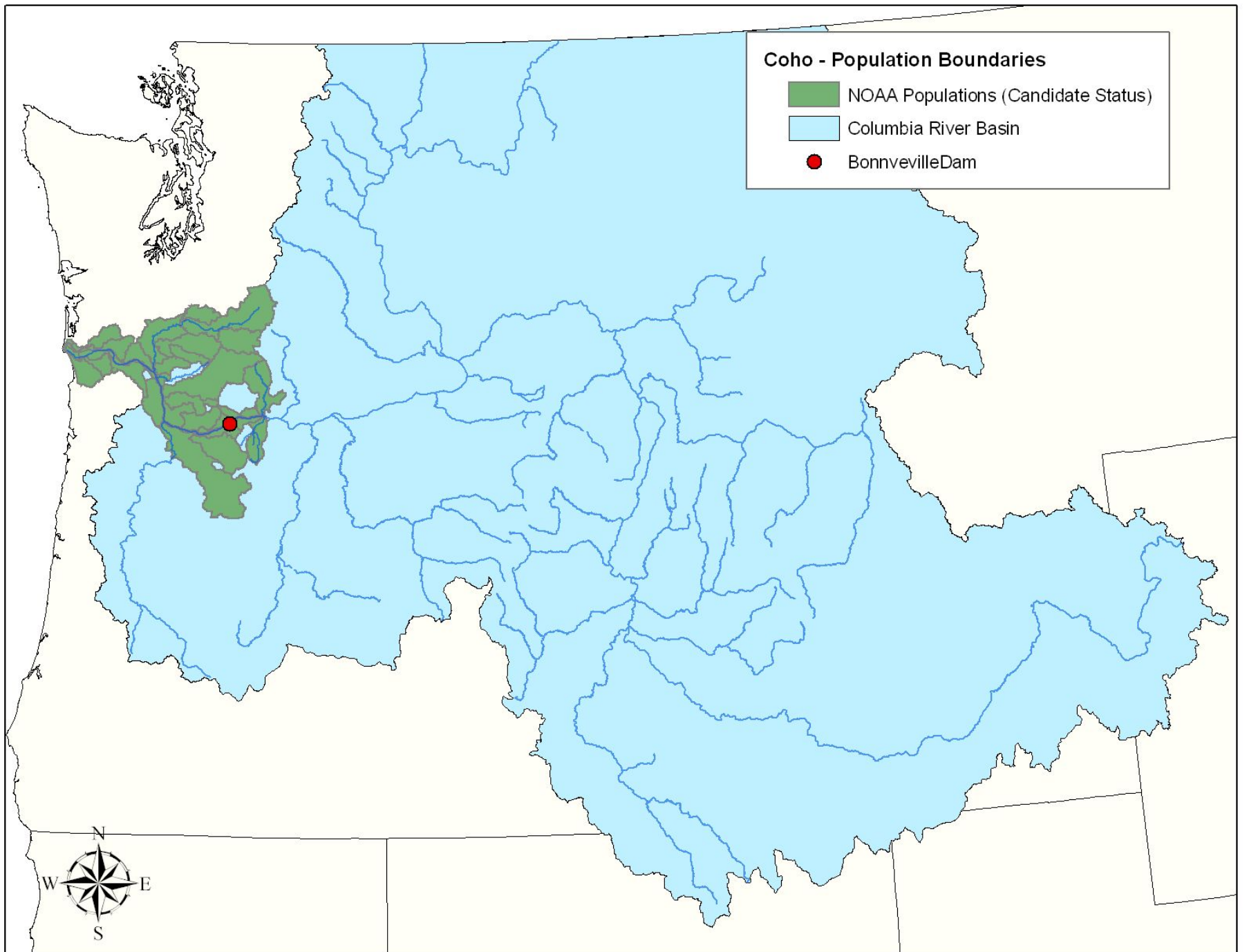


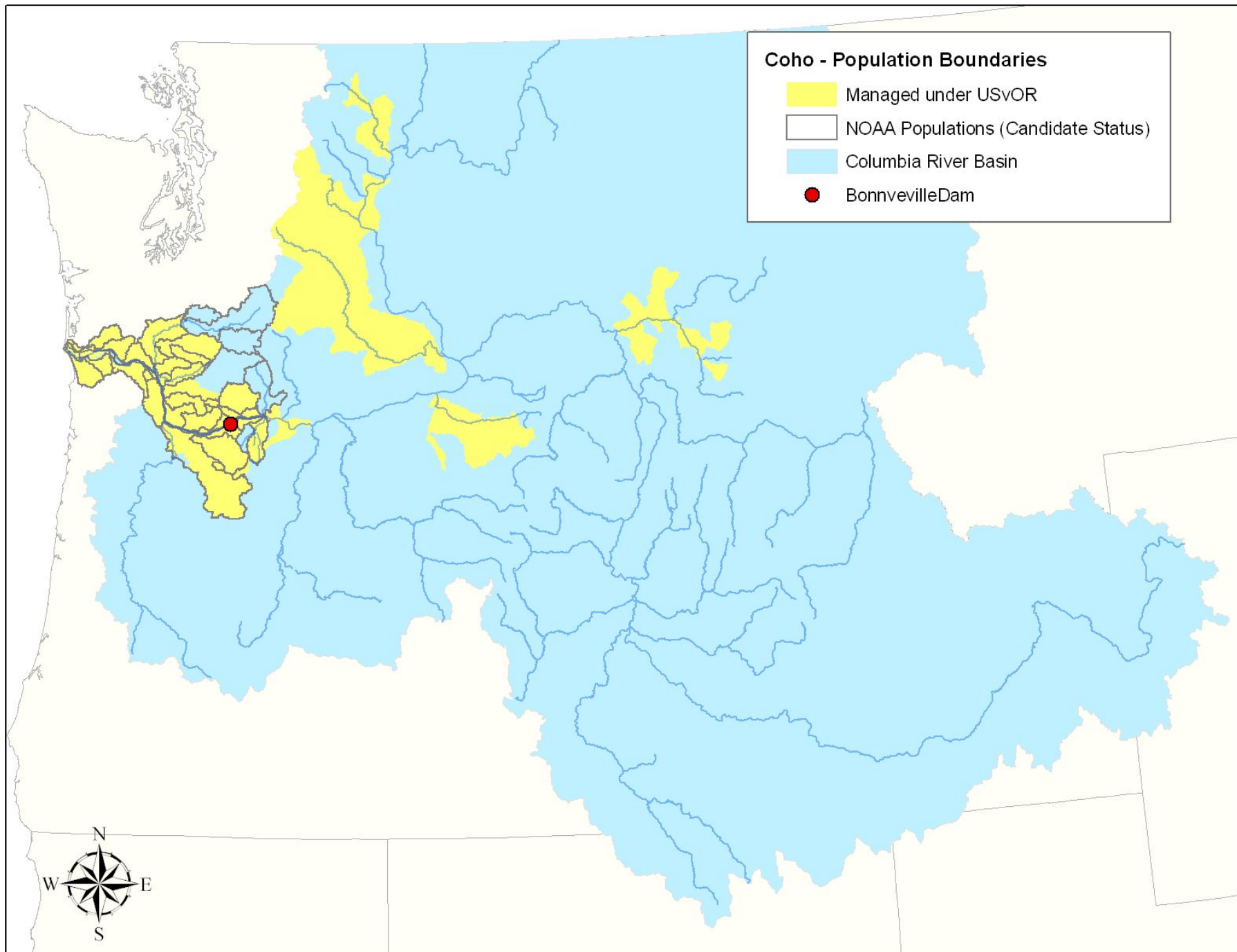
Winter Steelhead - Management Areas

- Managed under USVOR
- NOAA Populations
- Columbia River Basin
- Bonneville Dam

Note: Steelhead is not managed under PSC







What we are now working on...



The delineation of all Columbia Basin anadromous fish populations, both listed and non-listed, in a GIS format.

And the capture of
management information
and the characteristics
of each population...



Subbasin: John Day
Province: Columbia Plateau
ESU: Middle Columbia River
ESU Status: Threatened
Managed under USvOR? Yes
Managed under PSC? No
Spawning Timing: March through May
Population Status: Native
Genetic Fitness: No historic stocking or hatchery origin fish,
but hatchery strays may interbreed in some areas.
Age/Sex Composition: Data attached in separate table
Harvest (in watershed): Fishery on wild fish limited to catch and
release since 1996
Empirical Abundance: 4747 fish (1992-2003 return estimates)
EDT (modeled) Abundance: 1292 fish
EDT (modeled) Historic Abundance: 10108 fish
EDT (modeled) Productivity: 2.8
EDT (modeled) Diversity: 18%
Comments: Redband populations are sympatric with summer steelhead
and also occupy areas above steelhead barriers.