

Judi Danielson
Chair
Idaho

Jim Kempton
Idaho

Frank L. Cassidy Jr.
"Larry"
Washington

Tom Karier
Washington



Melinda S. Eden
Vice-Chair
Oregon

Gene Derfler
Oregon

Ed Bartlett
Montana

John Hines
Montana

November 8, 2004

MEMORANDUM

TO: Fish and Wildlife Committee

FROM: Bruce Suzumoto

SUBJECT: Approval of planning and organizational funds to initiate APRE/subbasin plan integration process.

Proposed Action: Approve the attached budget to provide funding for the initial planning and organization of the APRE/subbasin planning integration process. This action will allow Bonneville to negotiate the necessary contracts for project implementation. The costs of these activities should not exceed \$68,500 and would be charged against the \$900,000 APRE placeholder in the FY05 budget.

Background: Staff and outside review indicated that many of the subbasin plans failed adequately to account for artificial production in their subbasins. Many plans that included artificial production strategies did not fully describe how that strategy was integrated with habitat related strategies to meet subbasin goals. Similarly, often plans did not clearly describe the artificial production strategy within the ecological context of the subbasin.

The Council staff proposes that the primary treatment for this problem come from the Artificial Production Review and Evaluation (APRE) and related initiatives as described below. Improvements and additional information will be incorporated back into the subbasin plans at a later date. For artificial production activities to be adequately addressed in subbasin plans:

- Hatchery production must be aligned with natural fish production, existing subbasin habitat and future habitat restoration efforts.
- Hatchery production should be integrated with natural fish production with the aim of lessening negative ecological interactions and mixed-stock harvest impacts.
- Subbasin plans should clearly articulate measurable objectives for hatchery escapement, natural returns and harvest needs.

The Council staff believes that the APRE process may be the best opportunity to make advancements on these questions. Future APRE work will assist subbasin planning by better integrating artificial production with local conditions. As part of a process to clarify basinwide artificial production objectives, we anticipate that the APRE process will include a series of meetings with hatchery operators and harvest managers to clarify harvest and production objectives. In those meetings, we will work with the assessment information from subbasin plans and production, harvest and recovery goals described in other plans, to attempt to ensure that hatchery production, habitat conditions and restoration efforts, and natural population status is accounted for and integrated. As a final product of these meetings we will attempt to articulate numeric objectives for hatchery returns, natural escapement and harvest needs in and out of the subbasin. These numeric subbasin objectives can then be aggregated into provincial objectives and provincial objectives into basinwide objectives. The products from these workshops will likely inform future iterations of subbasin plans.

The APRE will work with NOAA Fisheries and other regional entities to coordinate with ongoing ESA and other regional processes. We anticipate that this comprehensive project will ultimately include all Columbia River subbasins and encompass nearly 500 hatchery and natural stocks of fish.

Budget: The proposed action will provide funds to facilitate planning, organizing and performing initial coordination activities to implement this project. The total cost for the initial phase will not exceed \$68,500 and will be completed by the end of January 2005. After the initial planning and organizational activities are complete, a final budget for the entire APRE/subbasin plan integration project will be presented to the Council for consideration.

Judi Danielson
Chair
Idaho

Jim Kempton
Idaho

Frank L. Cassidy Jr.
"Larry"
Washington

Tom Karier
Washington



Melinda S. Eden
Vice-Chair
Oregon

Gene Derfler
Oregon

Ed Bartlett
Montana

John Hines
Montana

November 8, 2004

MEMORANDUM

TO: Fish and Wildlife Committee

FROM: Bruce Suzumoto

SUBJECT: Future hatchery integration with subbasin plans

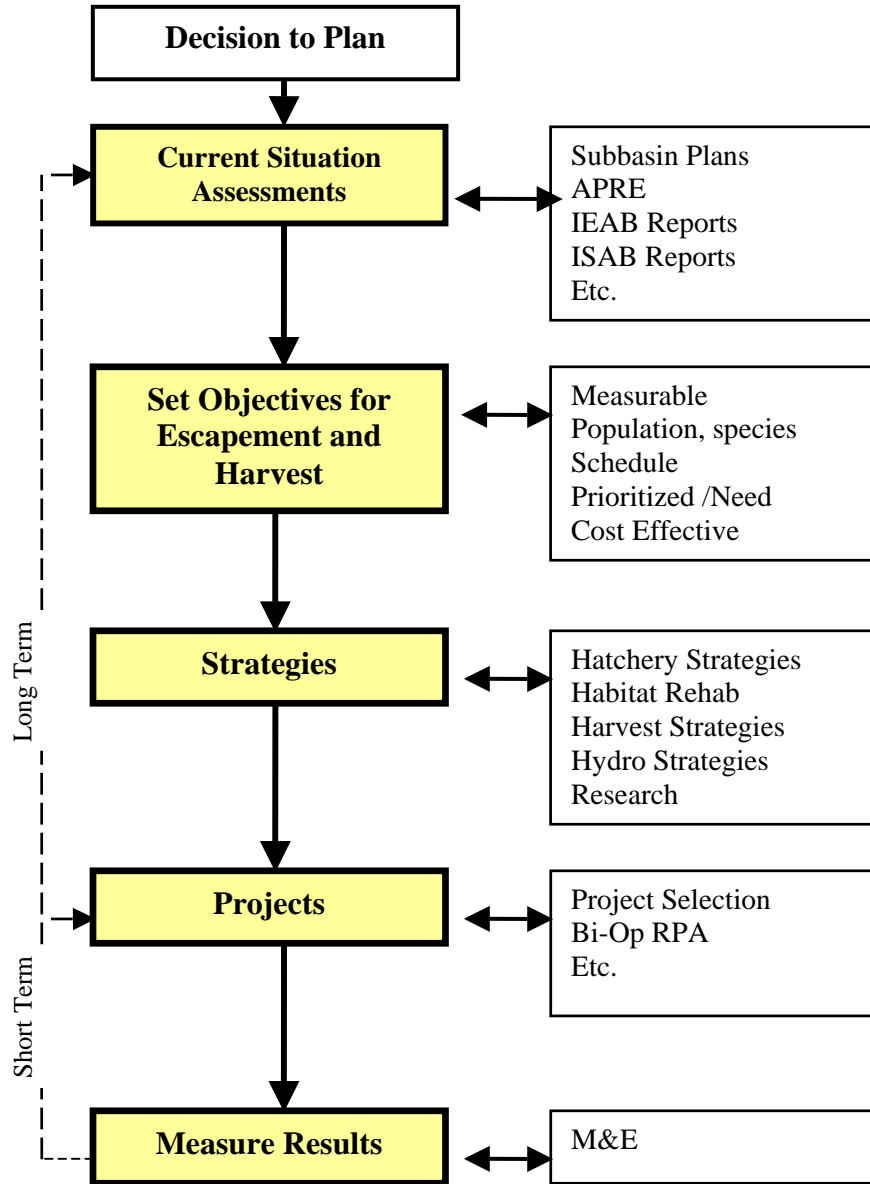
A review of subbasin plans indicated that most plans did not adequately describe how hatchery programs would integrate with existing habitat and future rehabilitation activities. Most plans also lacked measurable objectives for natural returns, hatchery escapement and harvest needs. Over the past month, Council staff has met with the staff of several organizations to discuss how we might better coordinate Columbia Basin hatchery programs with the many regional mitigation, recovery and enhancement activities. During those meetings most people agreed that many fish and wildlife efforts are not integrated with each other and lacked clearly defined objectives. An obvious conclusion from these discussions was that without a clear understanding on what we are trying to accomplish it is difficult to coordinate activities or prioritize actions.

In an effort to better integrate hatchery programs with subbasin plans and recovery activities we held two subbasin workshops on 10/27 and 11/4 (in the Kalama and Yakima subbasins) with the intent of establishing clearer objectives for escapement and harvest based on assessment information from the APRE process and subbasin plans. Staff will update the committee on the results of these initial hatchery/subbasin integration workshops and propose possible next steps for the integration process. In addition, staff will present ideas on how to develop measurable local and regional objectives and how these objectives can apply to regional planning processes.

f:\bs\2004\council meetings\111604\apre\integration\integration memo 110804.doc

Figure 1.

Need for Escapement and Harvest Objectives in Regional Planning Process



APRE Subbasin Plan Integration
Figure 2.

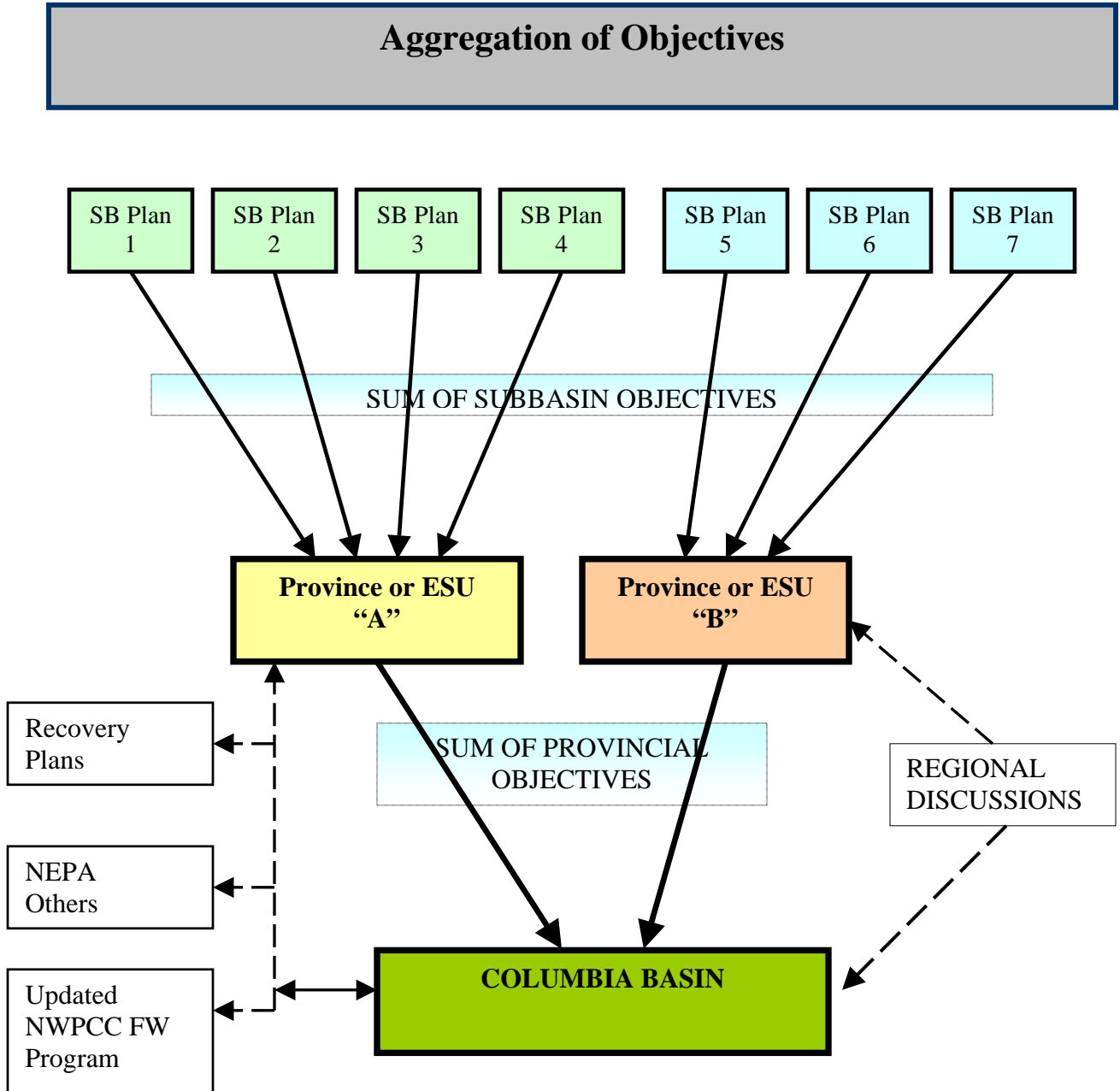
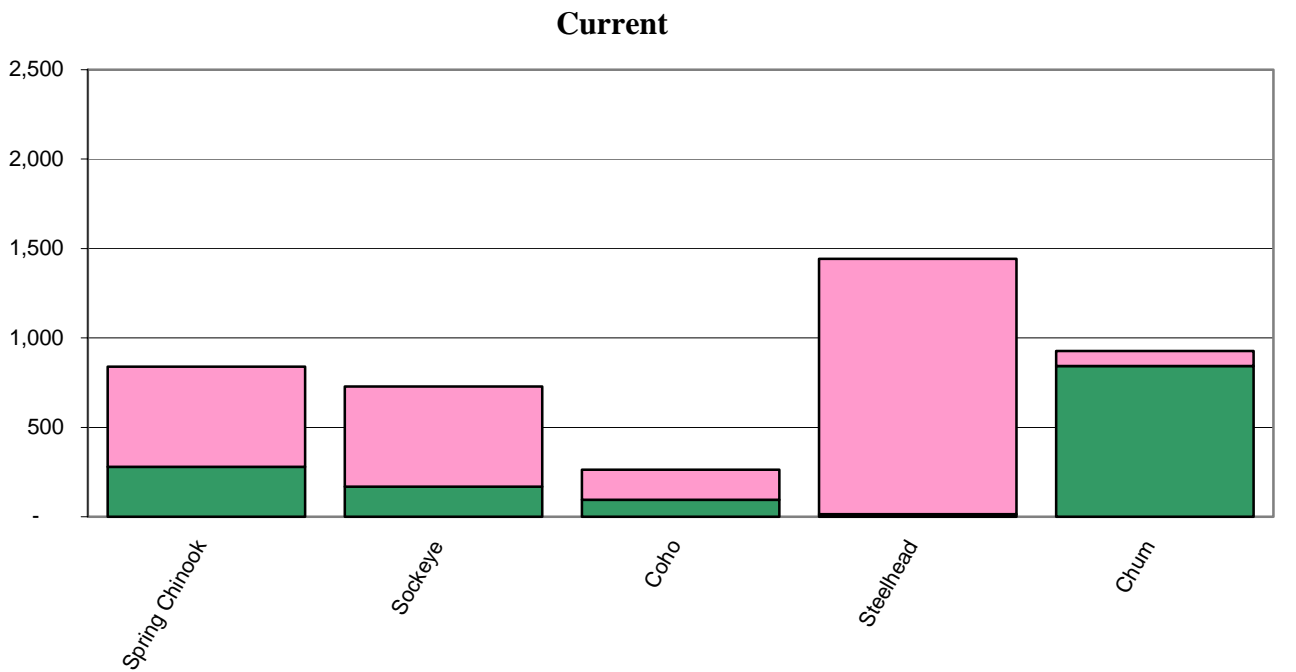
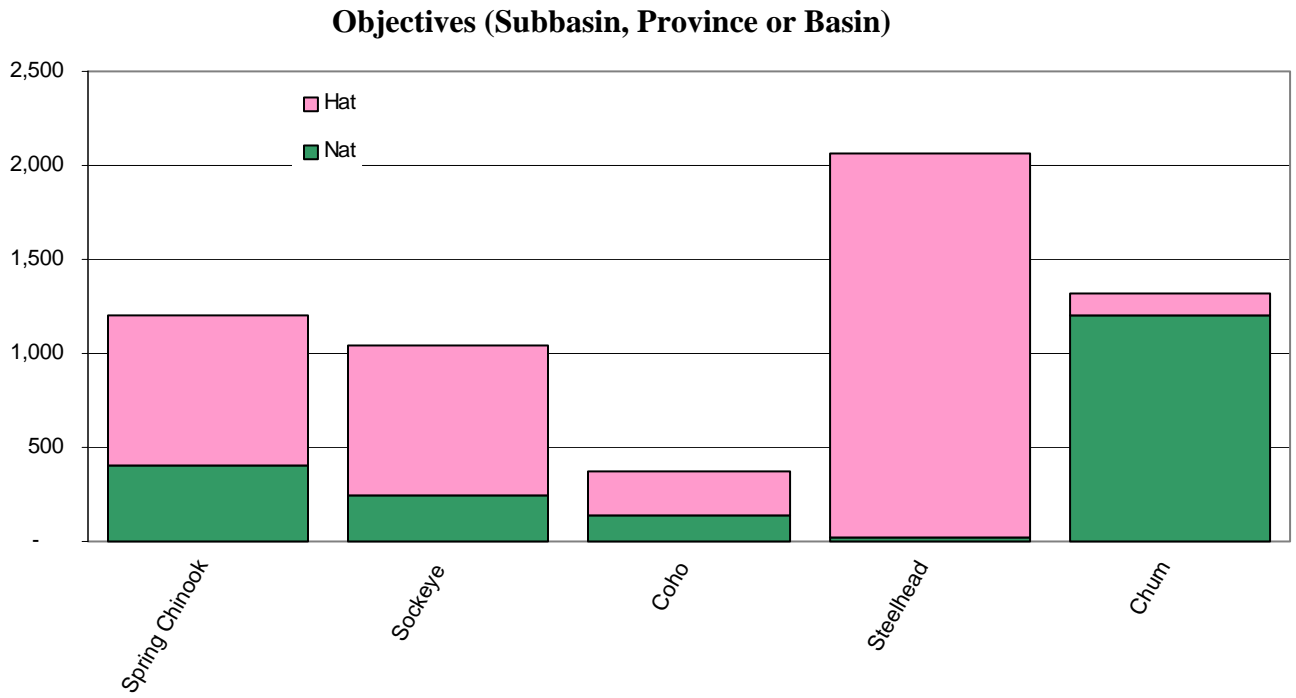


Figure 3.



f:\bs\2004\council meetings\111604\apre\integration\apre_implementation chart100504a.doc