



*Columbia River Basin
Monitoring, Evaluation, Research, and
Reporting (MERR) Plan*

DRAFT

Nancy Leonard

Fish, Wildlife, Ecosystem Monitoring and Evaluation Manager

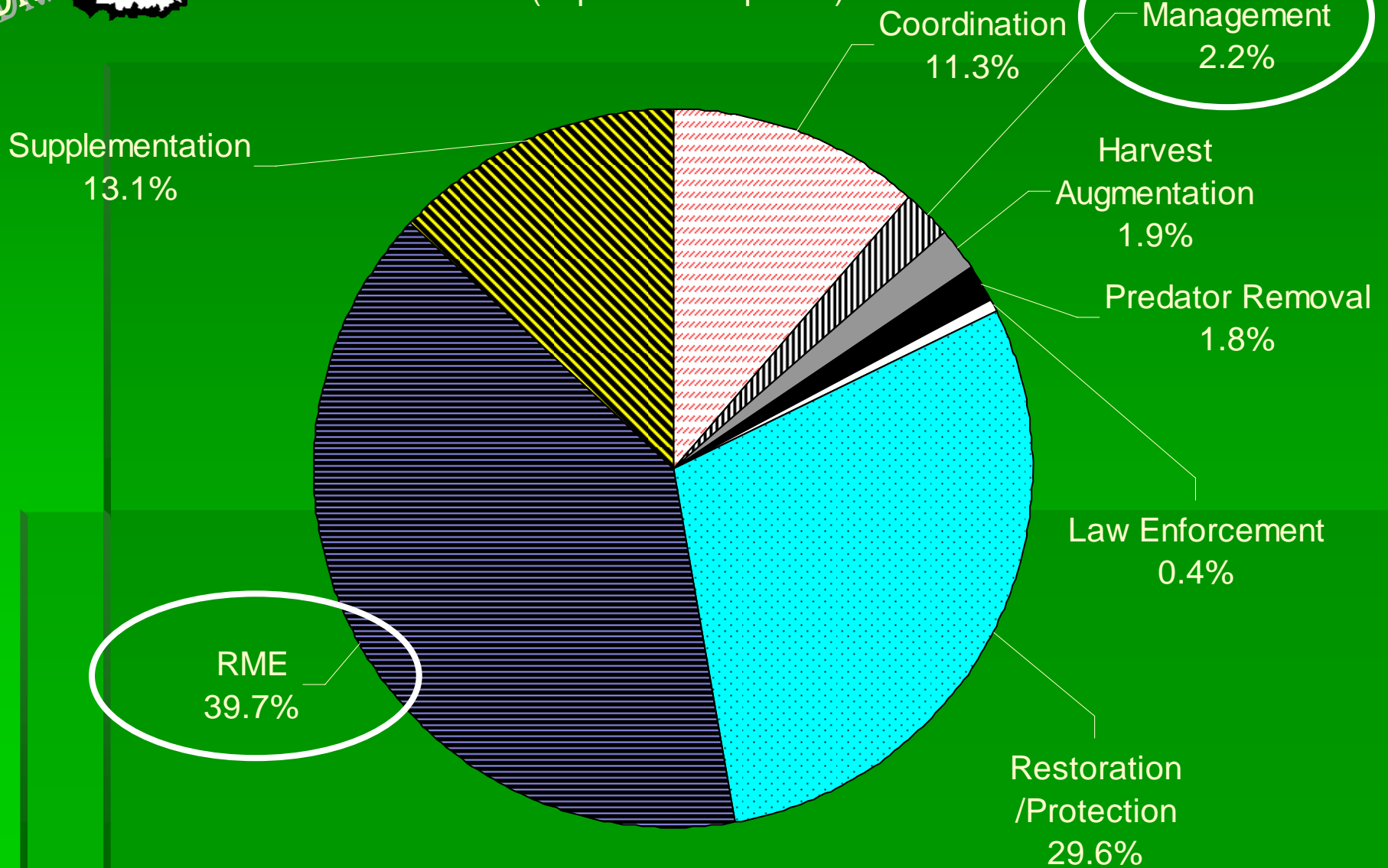
Northwest Power and Conservation Council

March 2010



Why Develop a MERR Plan?

FY2009 Expenditures
(capital and expense)





An ongoing Council Discussion

2006

2009

2010

Columbia
Draft G
P:

Northwest Power and Conservation Council
Columbia River Basin
Fish and Wildlife Program



Columbia River Basin
Monitoring, Evaluation, Research, and Reporting Plan



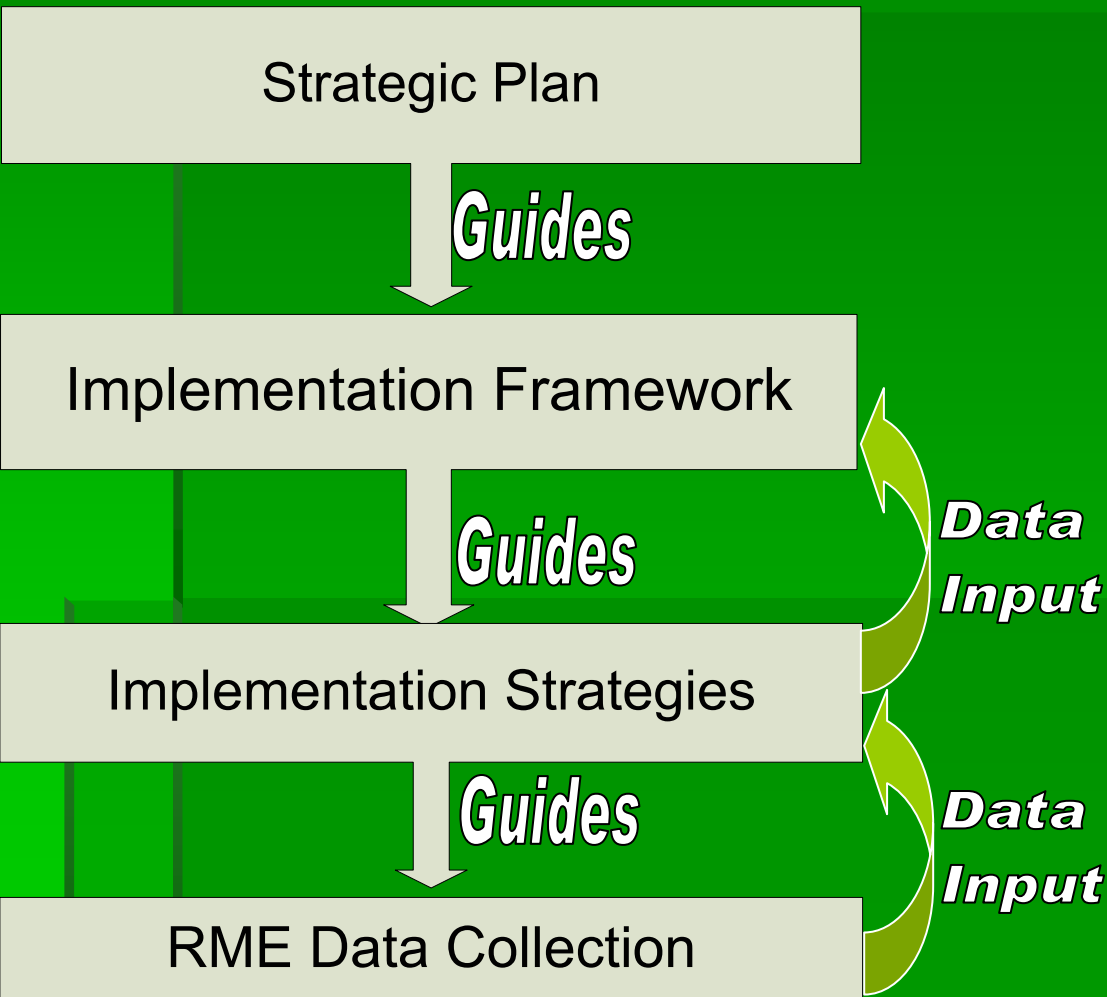
Northwest Power and Conservation Council
Fish and Wildlife Division

Draft February 2010

Council Document
2010-xx-xx



MERR Plan Structure





MERR Plan Structure

Strategic Plan

Council's Broad RME and Reporting

- Goal
- Expectations
- Policy Guidance



MERR Plan Structure

Implementation Framework

Broad Guidelines:

- FW Program Management Questions
 - FW Program Biological Objectives
- } What to do
- Basinwide Prioritization Criteria
- } What's more important
- Basin Research Approach (Appr.)
 - Basin Monitoring Approach
- } How to do it
- Basin Evaluation and Reporting Appr.
 - Basin Data Management & Sharing Appr.
- } What Data is needed



MERR Plan Structure

Implementation Strategies

Broad Guidelines:

- Guide regional development of implementation strategies
- Compatible anadromous, resident fish and wildlife strategies
- Incorporates relevant regional products (Skamania workshops)

To be Developed with Region



MERR Plan Structure

RME Data Collection

More focused & guided by:

- FW Program
- Council Research Plan
- MERR Implementation Framework
- MERR Implementation Strategies
- ISRP
- Council recommendations



Implementation Framework Details

- **What Helps Focus RME & Reporting?**
- What Aids with Overall Prioritization
- Research Approach Focusing & Prioritization
- Monitoring Approach Focusing & Prioritization
- Evaluation and Reporting Approach – Programmatic Focus
- Data Management & Sharing Requirements Approach
- Standardized Approach for Implementation Strategies



What Helps Focus RME & Reporting?

- Approved 9 draft Basinwide Management Questions
- 2009 Program Biological Objectives organized and prioritized
- 2009 Program Performance Standards





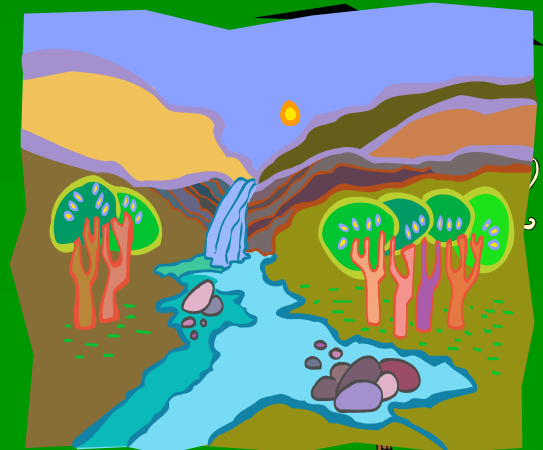
Implementation Framework Details

- What Helps Focus RME & Reporting?
- **What Aids with Overall Prioritization**
- Research Approach Focusing & Prioritization
- Monitoring Approach Focusing & Prioritization
- Evaluation and Reporting Approach – Programmatic Focus
- Data Management & Sharing Requirements Approach
- Standardized Approach for Implementation Strategies



What Aids with Overall Prioritization

- Four Tier Criteria for RME Actions
 - Contribution to Program Progress
 - Feasibility
 - Efficiency
 - Cost Savings
- Priority Species and Habitat Characteristics
 - Anadromous and Resident Fish (12 species)
 - Wildlife (18 species)
 - Habitat Characteristics (6)





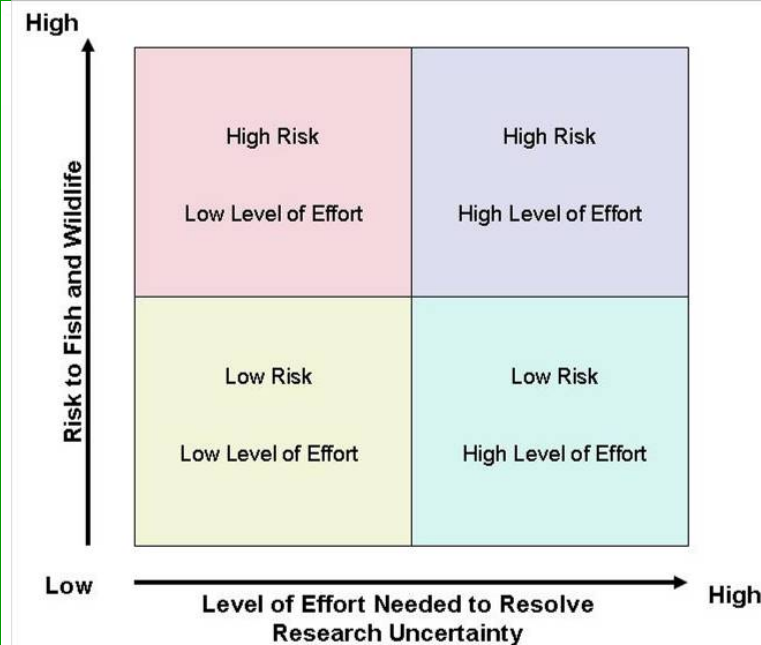
Implementation Framework Details

- What Helps Focus RME & Reporting?
- What Aids with Overall Prioritization
- **Research Approach Focusing & Prioritization**
- Monitoring Approach Focusing & Prioritization
- Evaluation and Reporting Approach – Programmatic Focus
- Data Management & Sharing Requirements Approach
- Standardized Approach for Implementation Strategies



Research Approach Focusing & Prioritization

- Research on critical uncertainties
 - Reasonable time-frame
 - Substantial influence on policy decisions
- Research Plan prioritization guided by:
 - Comparative risk assessment
 - Feasibility





Implementation Framework Details

- What Helps Focus RME & Reporting?
- What Aids with Overall Prioritization
- Research Approach Focusing & Prioritization
- **Monitoring Approach Focusing & Prioritization**
- Evaluation and Reporting Approach – Programmatic Focus
- Data Management & Sharing Requirements Approach
- Standardized Approach for Implementation Strategies



Monitoring Approach Focusing & Prioritization

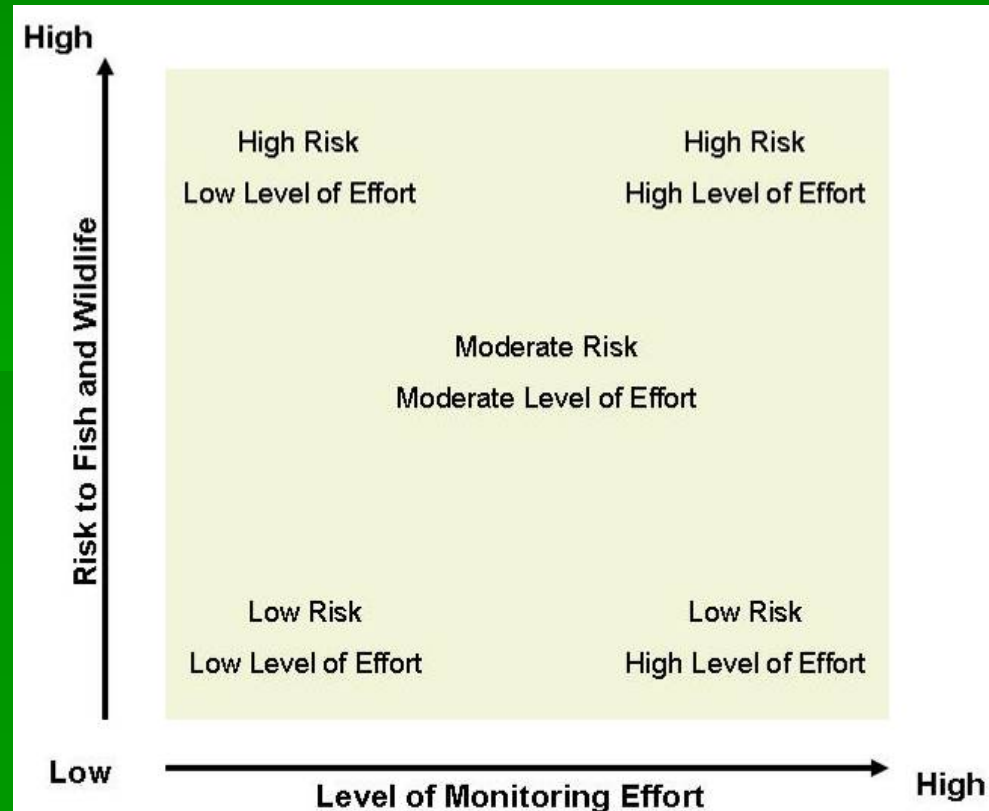
Types of Monitoring

- Compliance, Implementation, and Performance
- Status and Trend
- Action Effectiveness

How Much Monitoring

Low to High risk
= less to more monitoring

Low or High effort
= all or project subset





Implementation Framework Details

- What Helps Focus RME & Reporting?
- What Aids with Overall Prioritization
- Research Approach Focusing & Prioritization
- Monitoring Approach Focusing & Prioritization
- **Evaluation and Reporting Approach – Programmatic Focus**
- Data Management & Sharing Requirements Approach
- Standardized Approach for Implementation Strategies



Evaluation and Reporting Approach - Programmatic Focus

Program Review, Project Review, and Programmatic Focus

- Scientifically sound
- Apply guidance from
- ISRP-Project Pro

High-Level Implementation Indicators to Measure Success of the Fish and Wildlife Program

October 2009
Council members approved three high-level indicators that will be used to monitor the progress of the Council's Columbia River Basin Fish and Wildlife Program:

1. abundance of fish and wildlife
2. hydrosystem survival and passage; and
3. Council actions.

The indicators will be used to report to Congress and the Northwest's governors.

[and table of indicators \(added 10/29\)](#), and

Science

ISRP
Independent Scientific Review
for the Northwest Power & Conservation
851 SW 6th Ave
Portland
OR 97205

Memorandum (ISRP 2009-50)

To: W. Bill Booth, Council Chair

From: Eric Loudenslager, ISRP Chair

Subject:

Background

At the Council's June 17, 2009 request the ISRP began a review of Columbia River Fish Accord proposal titled Upper Columbia Nutr 471-00). The project is intended to assess and characterize nutrient project proponents will perform controlled experimental addition of natural production of anadromous salmonids and their supporting limnological conditions in rivers in the Methow Subbasin.

On July 10, 2009, the ISRP released a preliminary report re items (ISRP 2009-27). On October 26, 2009, the Council's response documents which included point-by-point responses to updated project proposal that incorporates the responses. This memorandum summarizes the nine items in our preliminary review.

INDEPENDENT SCIENTIFIC REVIEW PANEL

RETROSPECTIVE REPORT 2007

ADAPTIVE MANAGEMENT IN THE COLUMBIA RIVER BASIN

ISRP 2008-4

Science Exchange Policy

Columbia River Estuary Science Policy Exchange

September 10-11, 2009

River View Room
Holiday Inn Express
204 West Marine Drive
Astoria, Oregon

Welcome to the Columbia River Estuary Science and Policy Exchange.

Purpose: To facilitate an exchange of information and ideas among members of the Council, the scientific community and fish and wildlife managers regarding ongoing habitat restoration work and RM&E in the lower Columbia River and estuary.

Facilitator: Donna Silverberg, DS Consultants

See the [meeting notes](#) (90k PDF) from this conference

High

Program Synopsis

- Factors addressed for priority species and habitat characteristics



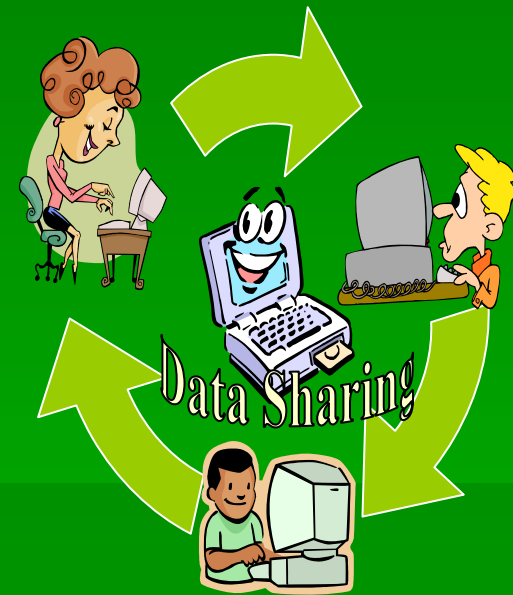
Implementation Framework Details

- What Helps Focus RME & Reporting?
- What Aids with Overall Prioritization
- Research Approach Focusing & Prioritization
- Monitoring Approach Focusing & Prioritization
- Evaluation and Reporting Approach – Programmatic Focus
- **Data Management & Sharing Requirements Approach**
- Standardized Approach for Implementation Strategies



Data Management & Sharing Requirements Approach

- Data and metadata publicly available in an electronic format
- Data needed to report, at a minimum, on:
 - Council's High Level Indicators
 - Council's Fish and Wildlife Program Indicators
 - NOAA's Viable Salmonid Parameters
 - Effectiveness for Program actions
 - FCRPS Biological Opinion
- Specifies minimum reporting criteria guidelines
 - Performance measures (metrics), study design, methods, etc...





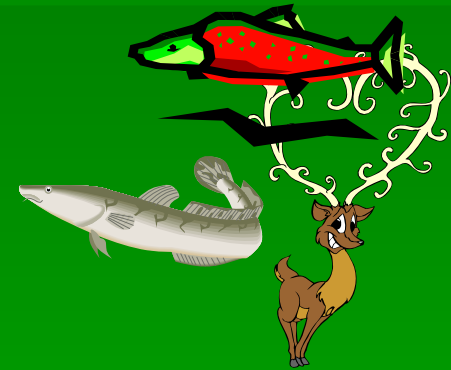
Implementation Framework Details

- What Helps Focus RME & Reporting?
- What Aids with Overall Prioritization
- Research Approach Focusing & Prioritization
- Monitoring Approach Focusing & Prioritization
- Evaluation and Reporting Approach – Programmatic Focus
- Data Management & Sharing Requirements Approach
- **Standardized Approach for Implementation Strategies**



Standardized Approach for Implementation Strategies

- Anadromous Fish, Resident Fish, and Wildlife
- Standardized Components
 - Management Questions & Indicators
 - Objectives & Performance Standards
 - Prioritization Criteria
 - Research & Monitoring Needs
 - Priorities, Data Quality, Protocols, ...
 - Data Management, Sharing and Reporting
- Developed with regional partners and incorporate relevant regional products by 2011
 - e.g., anadromous subframework, 2009 Skamania workshops





Next Steps

- **Public Comment Period Thursday March 11 - Monday April 26th, 2010**
 - **Overall MERR Plan**
 - **Content, structure and approach**
 - **Implementation Framework**
 - **Prioritization, criteria, tools & approaches**
 - **Implementation Strategies**
 - **Outline and regional approach for development**

