



CLEARWATER SUBBASIN DASHBOARD



GOALS, OBJECTIVES & STRATEGIES

Goals (from 2004 subbasin plan and data) filter for

Out of subbasin factors are primary in limiting adult recruitment in the Clearwater subbasin (See Assessment Section 8.3.1).

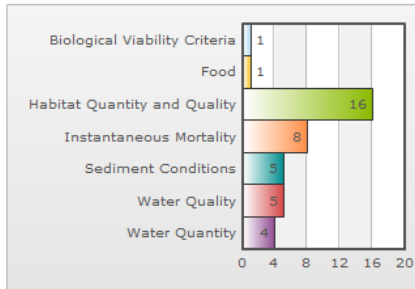
Anadromous fish production is limited by habitat quantity, quality and connectivity in portions of the subbasin.

Management of hatchery and natural production are not adequately integrated to meet mitigation, restoration, harvest and recovery goals. (See Assessment Sections 8.1 and 8.2 for information about ongoing hatchery practices and existing knowledge of hatchery/wild interactions within and between species).

Long-term persistence and abundance of native resident fish species within the Clearwater subbasin is threatened by genetic introgression, loss of fluvial population components, genetic interchange, population connectivity, and habitat quality and quantity (See Assessment Sections 8.1.5 through 8.1.9 and 8.3).

- Anadromous adult return objectives

LIMITING FACTORS & ACTIONS



Showing 40 limiting factors and 121 recommended actions for multiple species.

Click bars for more detail.

PROJECTS

Proposal (from cbfish.org) filter for

198335000 - Nez Perce Tribal Hatchery Operations and Maintenance (O&M)

198335003 - Nez Perce Tribal Hatchery Monitoring and Evaluation (M&E)

NEWS & UPDATES

- Clearwater strategy meeting May 12
- Council reviews 2 Clearwater projects (May 3)
- Project tours planned in August
- Clearwater Advisory Team (CAT) missing
- IDFG MOA projects

PROGRAMS & PLANS

STATE

- IDFG fish management plans for [Bonneville Cutthroat](#), [Yellowstone Cutthroat](#), [Mountain Whitefish](#), [White Sturgeon](#)
- Idaho Recovery Plans

TRIBE

- Tribal Resources Management Plan

ENDANGERED SPECIES ACT (ESA)

HATCHERIES

FOREST MANAGEMENT

- Clearwater & Nez Perce

MORE RESOURCES

STATE

SPECIES & GEOGRAPHY

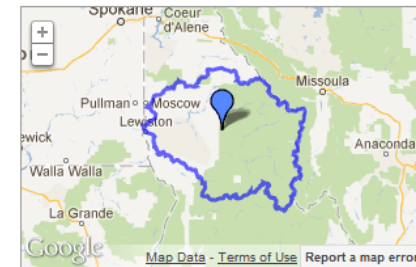
AQUATIC

Fall Chinook	status
Spring Chinook	status
Summer Steelhead	status
Bull Trout	status
Westslope Cutthroat	status
Brook Trout	status

WILDLIFE

- [List species...](#)

MAPS



full-size map with tribal land and hatcheries

- [Hatcheries](#) (static PDF)
- [Wildlife-habitat types: 1850 and 1999](#)

MONITORING