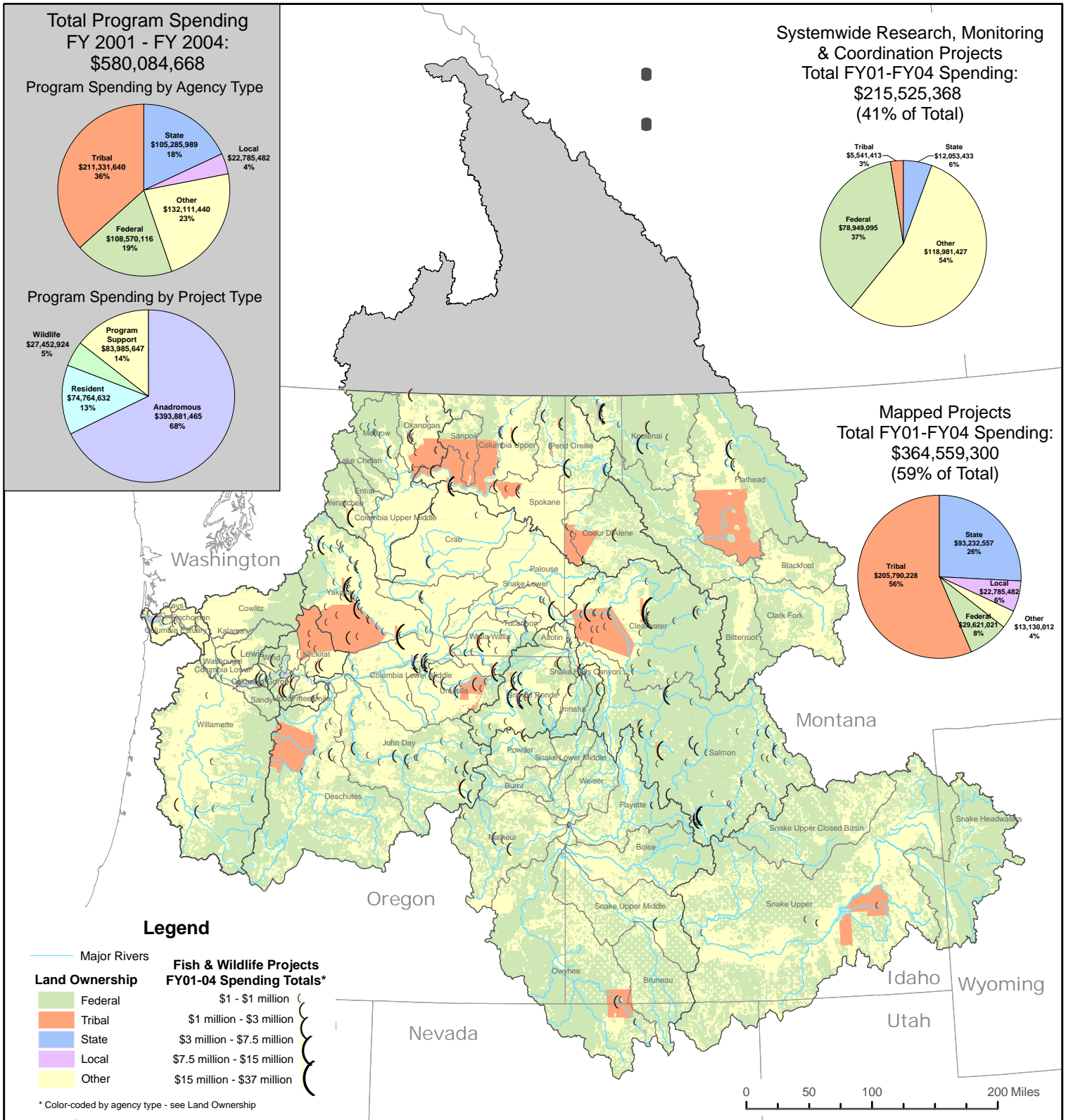


# Fish & Wildlife Program Projects in the Columbia River Basin FY 2001-2004



**Notes:** The pie chart in the upper right corner represents systemwide projects which are not located in any particular area. This includes BPA's overhead (under Federal), and regional coordination expenses such as NPCC and CBFWA (under Private/Other).

The "Local" project category includes watershed groups, irrigation districts, and county-level soil conservation districts.

Many projects have multiple subcontracts within them, which are performed by other agency types. For this map, subcontracts have been lumped under the sponsor of the project. So a project in the "state" agency type may include work being performed by consultants, tribes or local governments, and vice versa.