

MONTANA'S WILDLIFE MITIGATION SETTLEMENT

- How We Got Here
- Types of Projects
- Accomplishments to Date
- Future Priorities

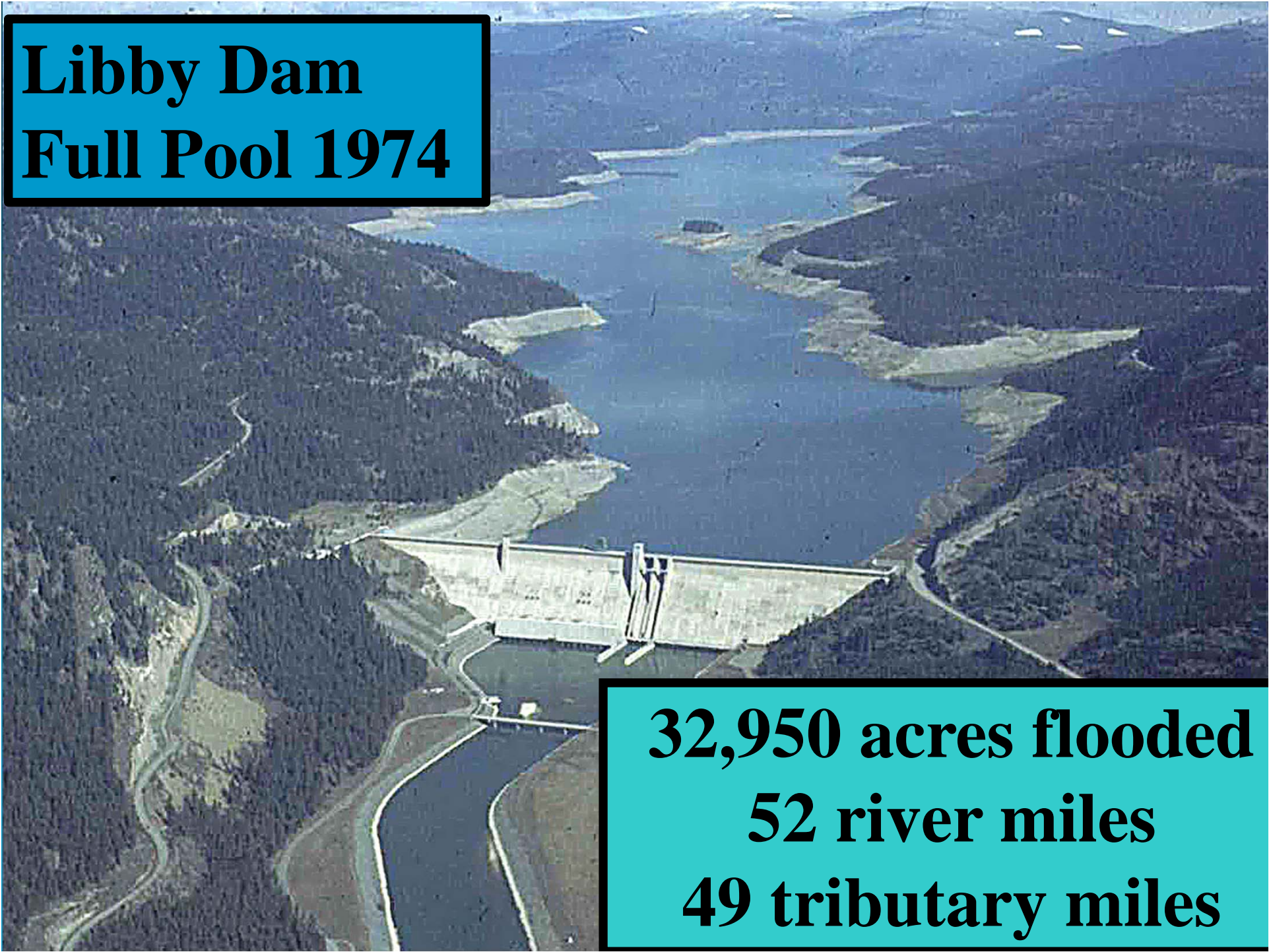
Alan Wood, Wildlife Program Manager



**Hungry Horse Dam
Full Pool 1954**

**23,750 acres flooded
35 miles of SF Flathead
43 miles of tributary**





Libby Dam
Full Pool 1974

32,950 acres flooded
52 river miles
49 tributary miles

1980 Act

Pacific Northwest Electric Power Planning and Conservation Act



1981 Recommendations

Prepared By:
MT FWP &
CSKT

Committee:
BIA, MPC, PP&L,
BOR, ACOE,
USFWS, WMTG&T

MONTANA Recommendations For Fish & Wildlife Program



Submitted To
Pacific Northwest Electric Power And Conservation Planning Council

1984 Loss Statement

MFWP Finalized losses for:

Hungry Horse

Libby

Noxon Rapids

Cabinet Gorge

Wildlife Impact Assessment and Mitigation Summary

Montana Hydroelectric Projects
Volume III - Hungry Horse Dam

Montana Department of
Fish, Wildlife & Parks

U.S. Department of Energy
Bonneville Power Administration
Division of Fish & Wildlife

October, 1984



Final
Report
1984

1985 Plan

MFWP Finalized Mitigation Plans:

Hungry Horse

Libby

Proposed to mitigate
for 100% of losses

WILDLIFE AND WILDLIFE HABITAT
MITIGATION PLAN FOR HUNGRY HORSE HYDROELECTRIC PROJECT

(Revised)
August, 1985



Prepared by
Montana Department of Fish, Wildlife and Parks

Gael N. Bissell - Wildlife Biologist
Chris A. Yde - Wildlife Biologist

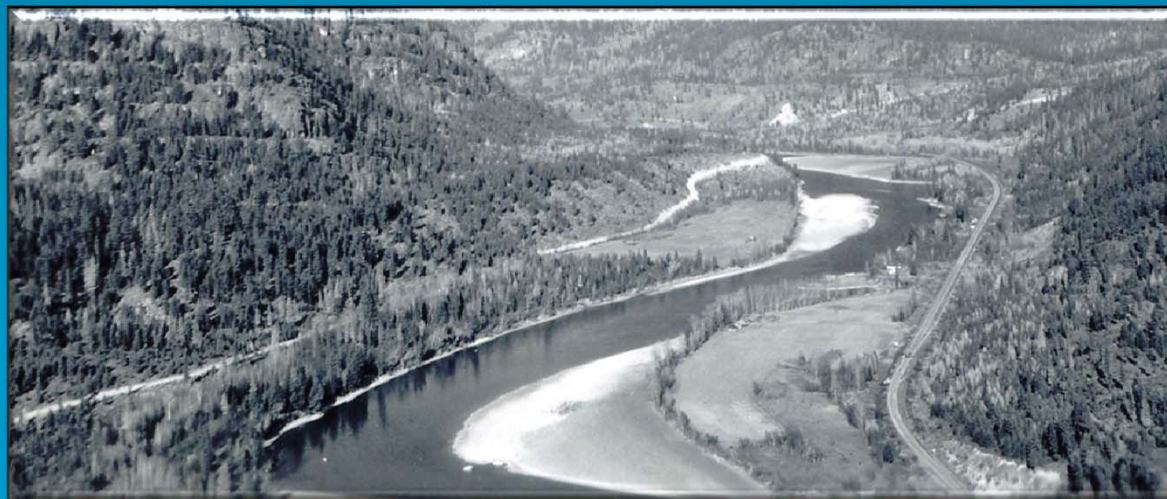
Funded by
Bonneville Power Administration
Project No. 83-464

1986 MT Proposal to NPCC

MT – Costs @ \$40-\$75 Million

PNUCC – Costs Unreasonable

Council – Negotiate Agreement?



1986 Montana Negotiations

PARTICIPANTS

MFWP, BPA, NPPC, USFWS, GNP

ACOE (N Pacific Div. & Seattle Dist.)

USFS (FNF & KNF)

PNUCC (WMG&T, MPC CFAC)

TNC, FLT

1986 Joint Recommendations

FWP and PNUCC jointly submit the Montana wildlife mitigation plan

Plan covers deer, elk, sheep, grizzly bear, bald eagle, CSTG, otter, marten/OG, waterfowl

Propose a trust fund \leq \$16 million

1987 Program

Council Adopts
modified plans

Hydropower
allocation

Can't approve
trust fund
approach, but
supported
concept



COLUMBIA RIVER BASIN FISH AND WILDLIFE PROGRAM

NORTHWEST POWER PLANNING COUNCIL

1988 Settlement



WILDLIFE MITIGATION
AGREEMENT FOR LIBBY AND
HUNGRY HORSE DAMS

between the

BONNEVILLE POWER
ADMINISTRATION

and the

STATE OF MONTANA

December 21, 1988

1988 Settlement

C&I losses in 1984 loss statements

Term of 60 years

\$12.5 million to MT >\$8 M 30 yrs

Mitigation to MT

Limited indemnity to BPA

1-to-1 crediting

Wildlife Mitigation Advisory Comm.

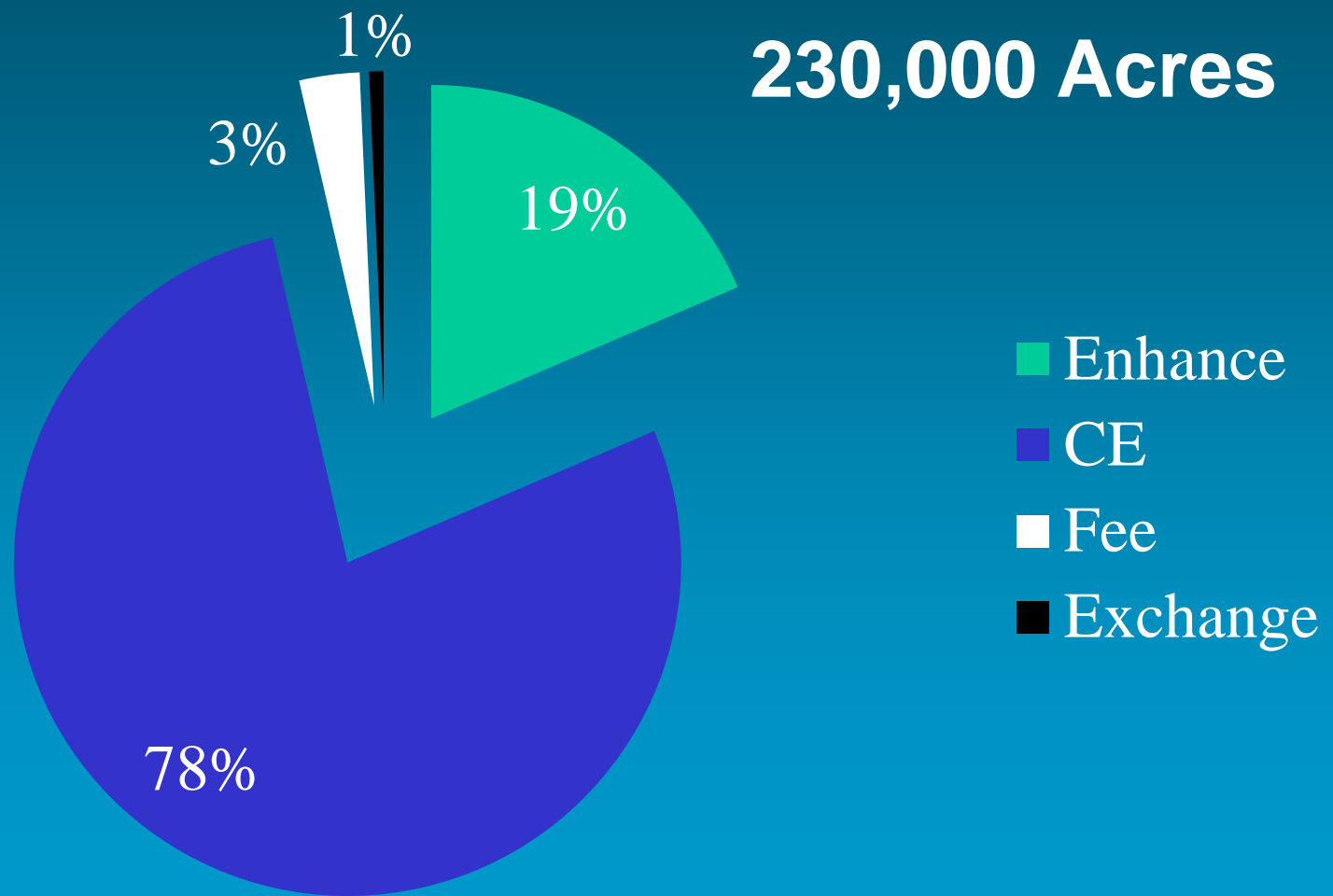


1988 Settlement

Wildlife Mitigation Advisory Committee

Members to Include	
MFWP	BPA
NPCC	PNUCC
USFWS	CSKT
USFS	WMG&T
MECA	BOR
ACOE	Others?

Types of Projects



Conservation Easements

4 Projects

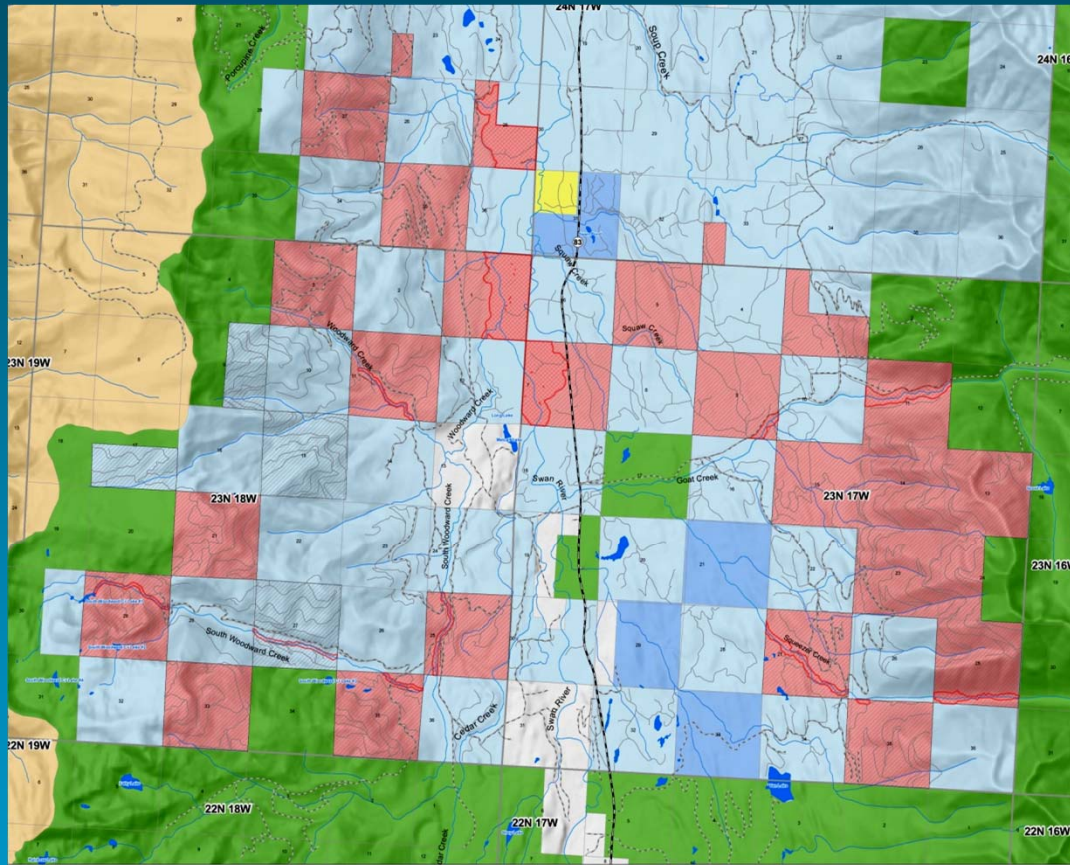
159,000 Acres

\$6.2 Million (\$39/ac)



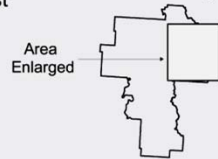
Swan Valley CE

16,500 Acres



- Riparian Exclusion Area
- FWP Easements
- TNC-Future MT FWP
- Tribal and BIA Lands
- MT FWP
- State Trust
- TNC
- USFS
- USFWS

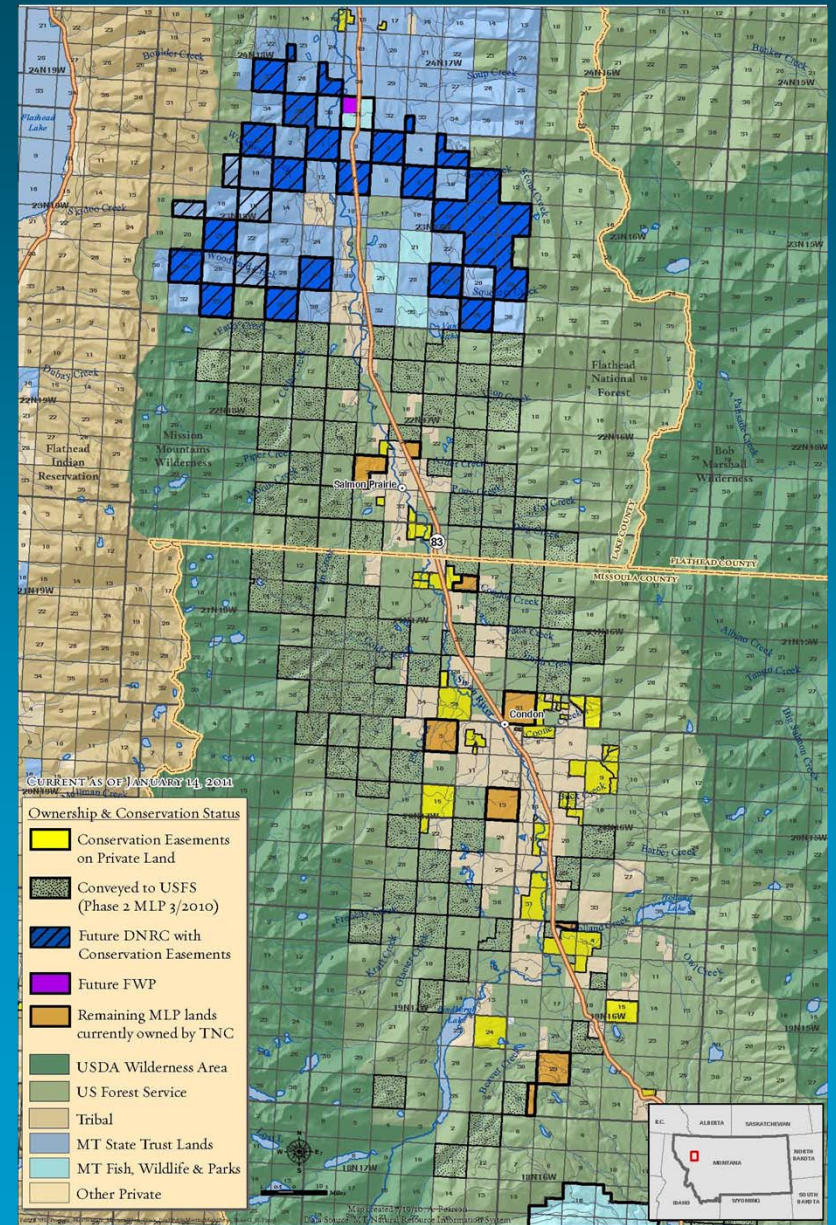
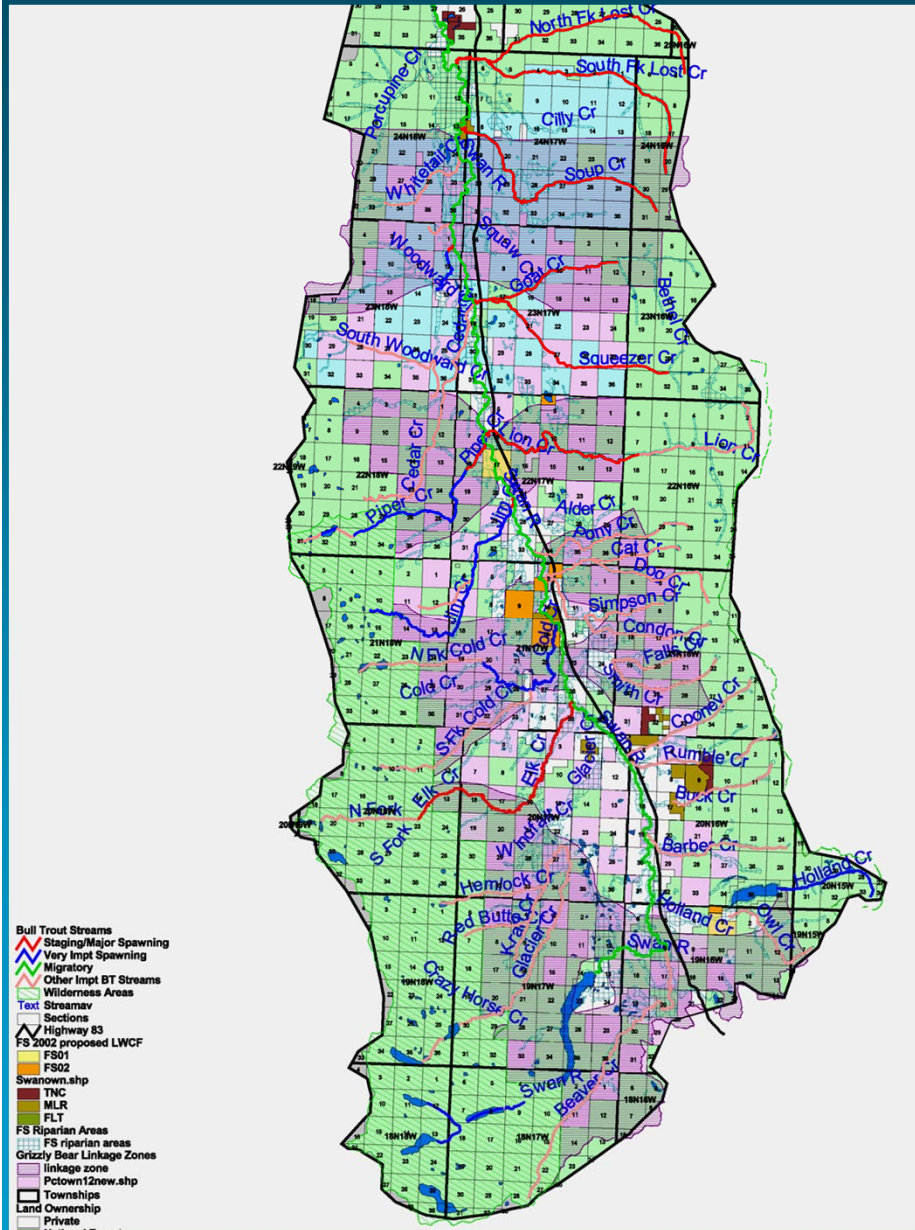
Lake County



Montana Fish, Wildlife & Parks



Swan Valley, MLP 80,000 Acres



Habitat Enhancements

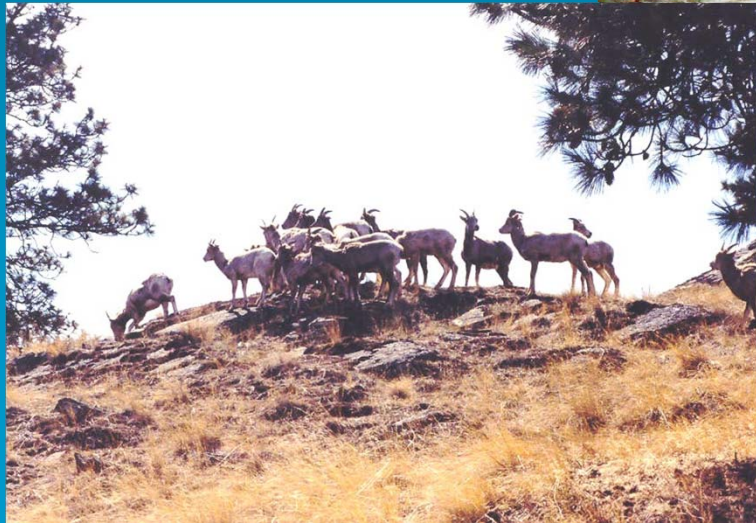
21 Projects

41,000 Acres

\$1.9 Million (\$46/ac)



Example: Enhancing Big Game Winter Ranges



Habitat Acquisitions

13 Projects
(4 pre-trust fund)

6,600 Acres

\$2.5 Million (\$379/ac)





Wild Drake

Big Spruce

WHPA

Foys Bend CE

Example: Flathead River

Land Exchange



2 Projects

1,524 Acres

\$172,462 (\$113/ac)

Land Trust Partnerships

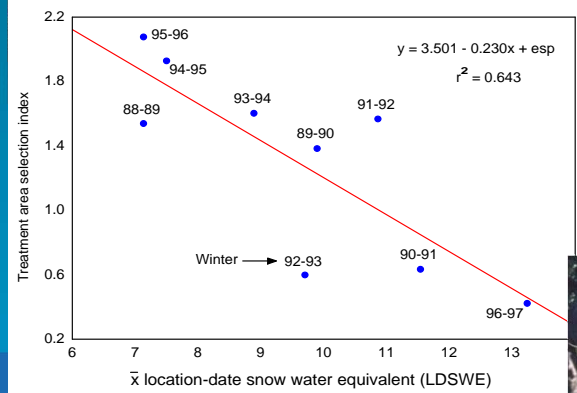
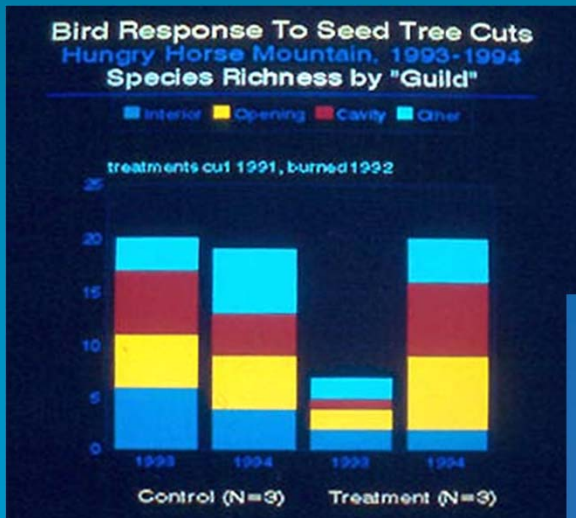
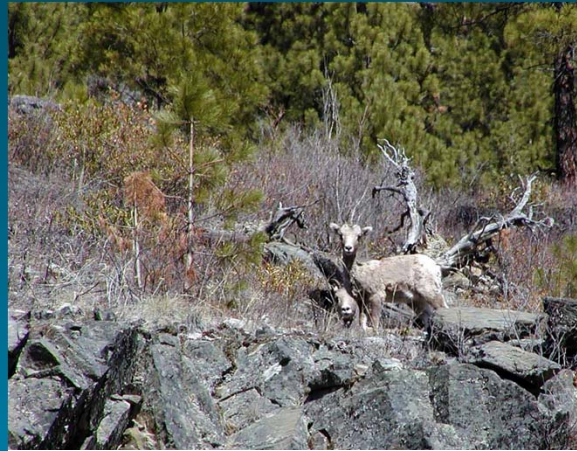


102 Conservation Easements

21,700 Acres

\$568,300 (\$27/ac)

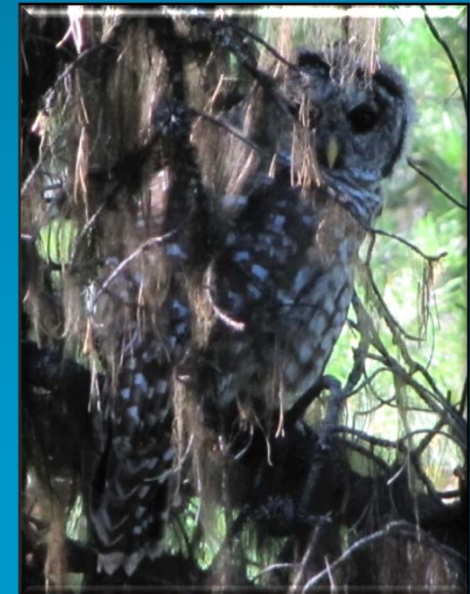
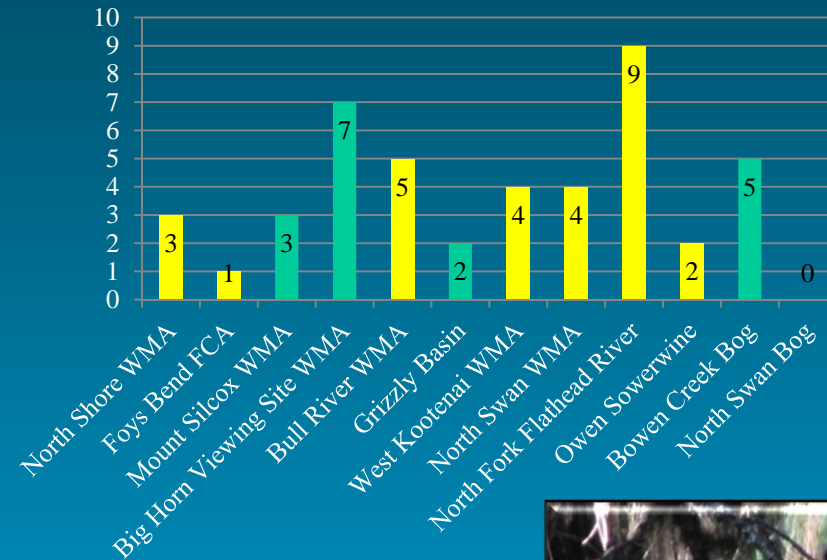
Past Monitoring



Ongoing Monitoring

- Weed Management
- Grazing Easements
- Wildlife Inventory
- Restoration
- Management Plans

Species Richness



Accomplishments

Habitat Unit	Total Losses		Project Acres
	Hydro	Full	
Riparian/Wetland	14,488	18,600	17,826
Palouse Prairie & Ag	1,251	1,583	7,790
Upland Forest	27,953	36,022	204,418
Total	43,692	56,205	230,034

Current Montana Program



We have mitigated C&I losses:

Maintain past projects

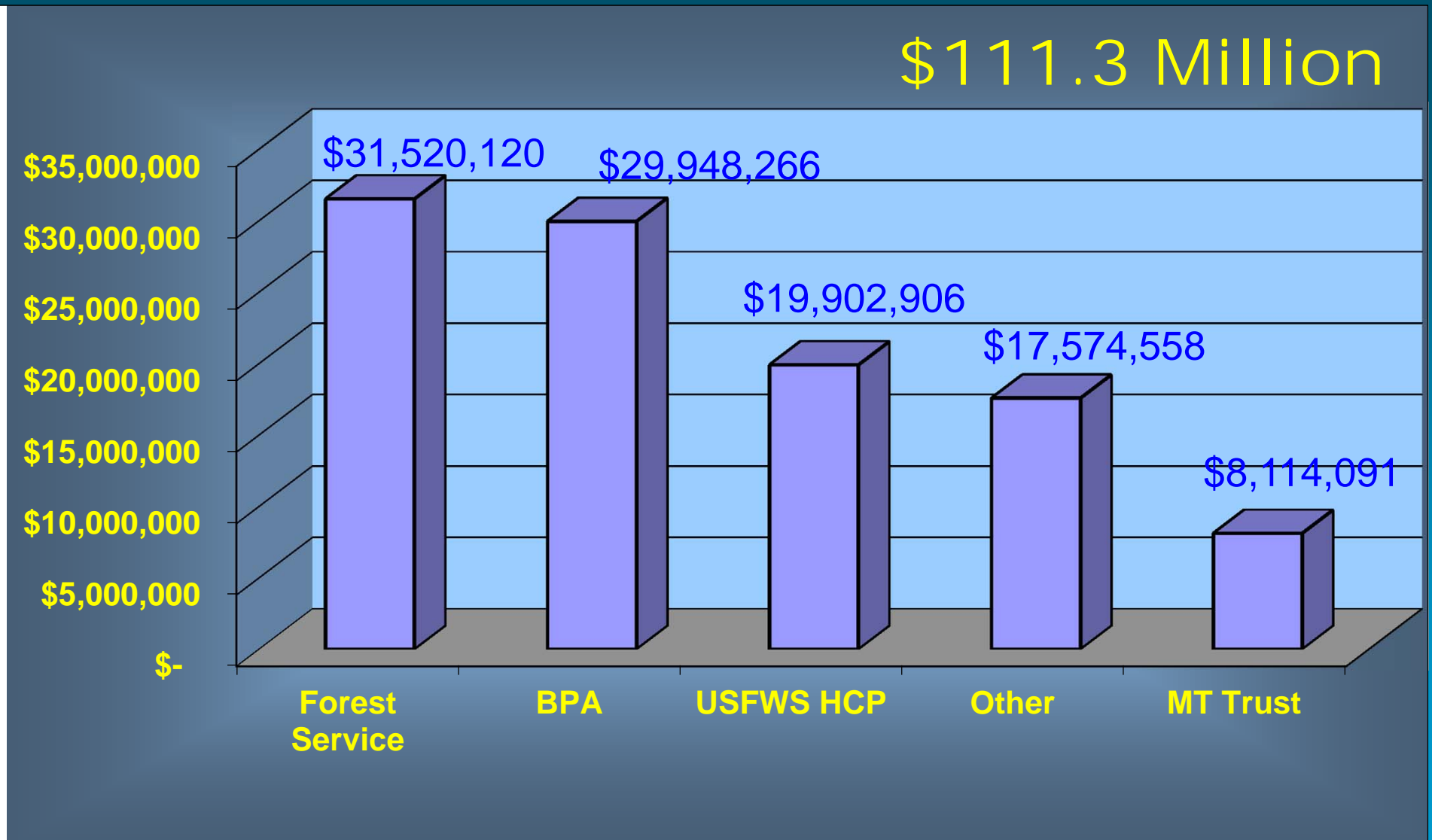
Additional partnerships to benefit

Wetlands	Bighorn Sheep
Furbearers	Grizzly Bears
Grasslands/Columbian Sharptails	

Implementation



Funding Partners



Summary



Trust Fund was a calculated risk
But it worked
Provides ongoing O&M funding
Continued partnership opportunities



Where Do We Go From Here?



Continued Partnerships & O/M



Kootenai River Operational Impacts



Kootenai Tribe of Idaho.

and



**Montana Fish Wildlife &
Parks**

Funding provided by

