

# **Wildlife Program Framework**



## **Wildlife Data Management and Regional Coordination Project Presentations to the ISRP**

**January 17, 2012**

**Wildlife Focus Workgroup, Chair, Kyle Heinrick**

**2006-006-00, Regional HEP Team, Paul Ashley**

**2003-072-00, Integrated Biodiversity Information System, Tom O'Neil**

**1989-062-01, Program Coordination and Facilitation Services, Tom Iverson**

# Outline

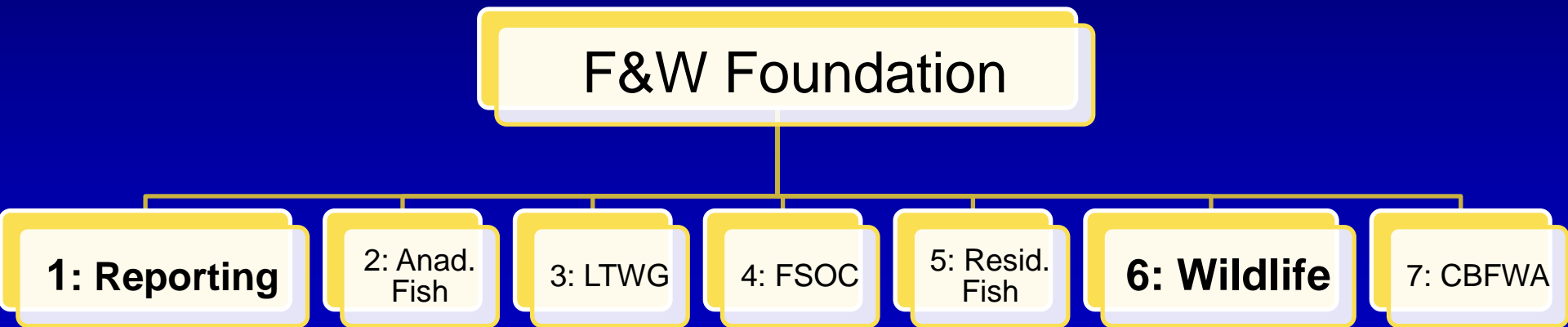
---

- 10 min Wildlife Monitoring Implementation Strategy (Wildlife Focus Workgroup)
- 10 min Regional Habitat Evaluation Team (CBFWF)
- 20 min Integrated Biodiversity Information System (NHI)
- 5 min Regional Coordination and Reporting (CBFWF)



1989-062-01:

# Program Coordination and Facilitation Services



Integration

# Future Work

## 1) FY2012 maintain integrity of work group

- Continue work on WMIS
- Review BPA Land Management Handbook
- Revisit WE definitions for PISCES
- Support Regional Habitat Evaluation Team activities

## 2) FY2013-2015

- Refine Wildlife HLIs as performance metrics
- Add wildlife HLIs to SOTR
- Begin wildlife operational losses discussions
- Integrate habitat monitoring activities for wildlife with fish monitoring programs
- Prepare for 2014 Program Amendments



# Objective 6: Wildlife Program Coordination

---

6.1: Continue to coordinate and facilitate the development of the Wildlife Monitoring Implementation Strategy to report wildlife HLIs for the Program

6.2: Coordinate and facilitate the development of standard business practices and protocols for BPA-funded wildlife mitigation projects

6.3: Coordinate and facilitate the wildlife managers' participation in the 2014 Program Amendment process



# Wildlife Program Nested Framework

NPCC Staff, BPA Staff, F&W Managers

Program  
Coordination

Wildlife Focus Workgroup

1989-062-01  
Facilitation  
Services

Monitoring, Data Management,  
and Reporting

2006-006-00  
Regional Habitat  
Evaluation Team

2003-072-00  
Integrated  
Biodiversity  
Information System

1989-062-01  
Status of the  
Resource

