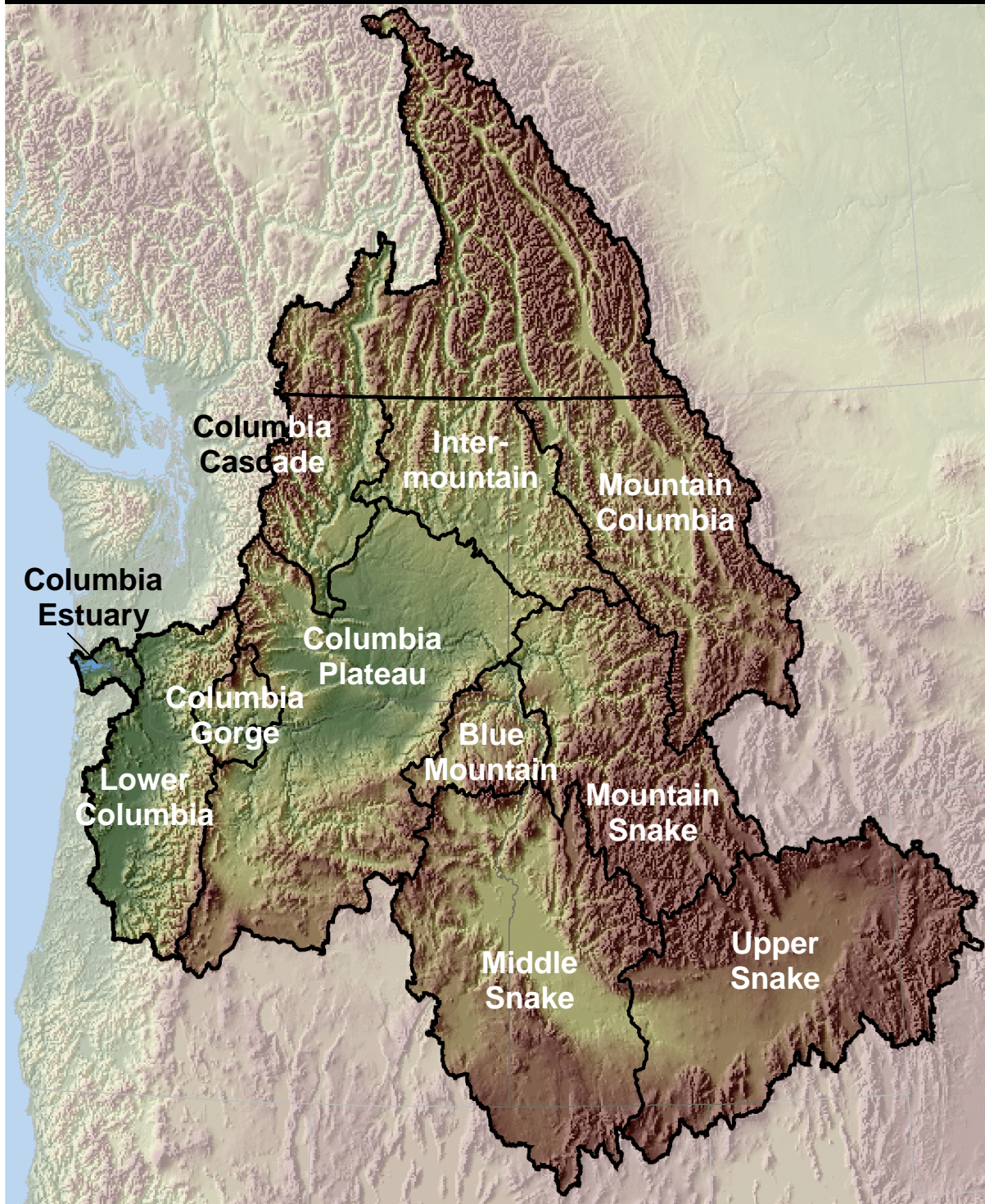


Basin, Province and Subbasin Reports

Summaries and Project Reviews



Columbia River Basin

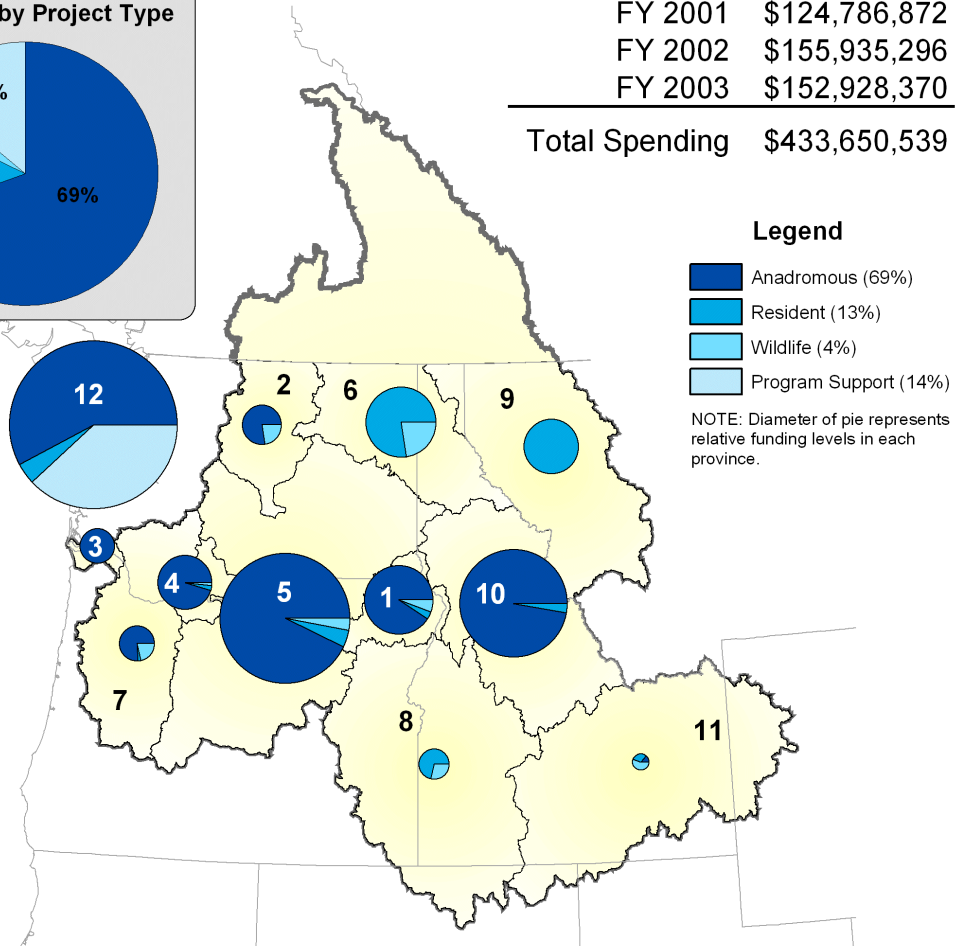
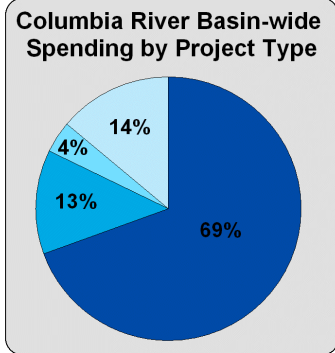


Columbia River Basin

BPA Spending, FY 2001-2003

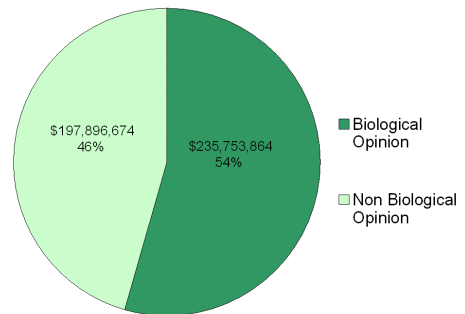
FY 2001	\$124,786,872
FY 2002	\$155,935,296
FY 2003	\$152,928,370

Total Spending \$433,650,539



Biological Opinion Funding, FY 2001-2003 NMFS & USFWS Designated Projects

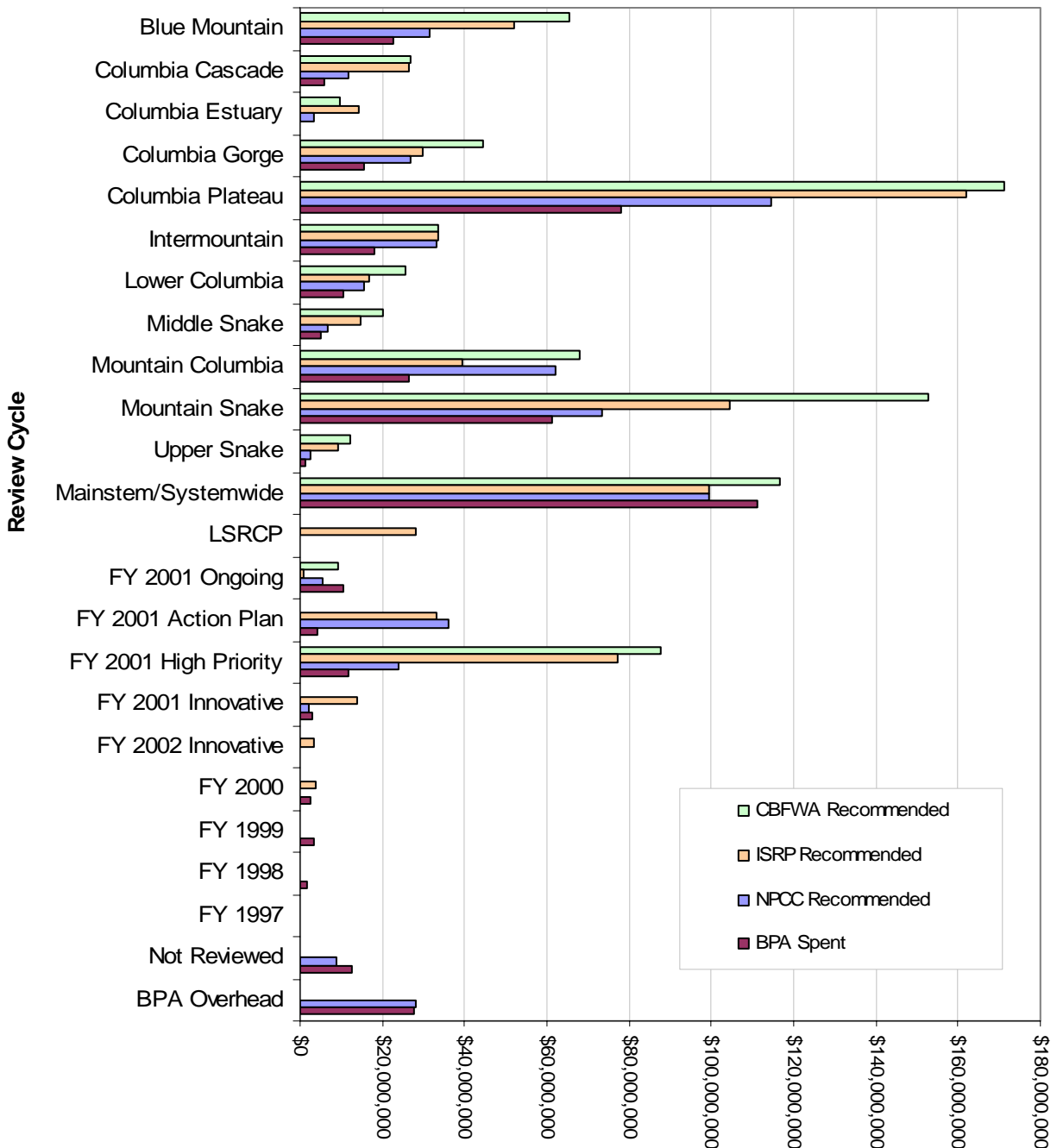
	BiOp	Non BiOp
1 Blue Mountain	\$22,485,330	\$3,825,552
2 Columbia Cascade	\$2,580,450	\$6,067,817
3 Columbia Estuary	\$6,071,671	\$583,505
4 Columbia Gorge	\$7,284,623	\$9,072,705
5 Columbia Plateau	\$50,401,299	\$44,434,406
6 Intermountain	\$1,736,348	\$26,128,373
7 Lower Columbia	\$4,216,142	\$2,621,623
8 Middle Snake	\$0	\$5,139,778
9 Mountain Columbia	\$13,749,824	\$2,711,422
10 Mountain Snake	\$39,495,242	\$25,487,960
11 Upper Snake	\$0	\$1,474,846
12 Systemwide	\$87,732,934	\$70,348,687



Columbia River Basin FY2001-2003 Spending Summaries

Review Recommendations and BPA Spending by Review Cycle, FY01-03

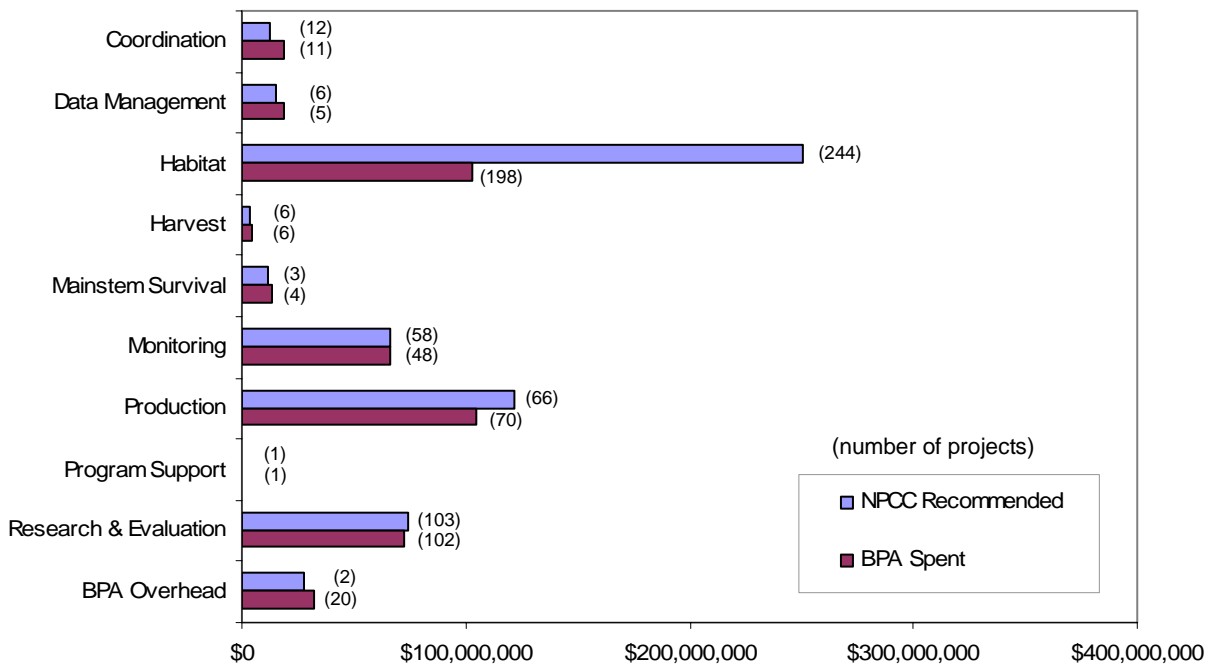
CBFWA, ISRP & NPCC Recommendations, and BPA Spending for FY 2001-2003



Notes:

1. ISRP Recommendation numbers were developed by using sponsor requested amounts for the number of years the ISRP recommended funding.
2. ISRP did not review projects in the FY 2001 Ongoing review cycle.
3. CBFWA did not review projects in the Innovative, FY 2001 Action Plan, and LSRCP review cycles.

NPCC Recommendations and BPA Spending by Project Category, FY01-03



NPCC Recommendations and BPA Spending by Project Type, FY01-03

