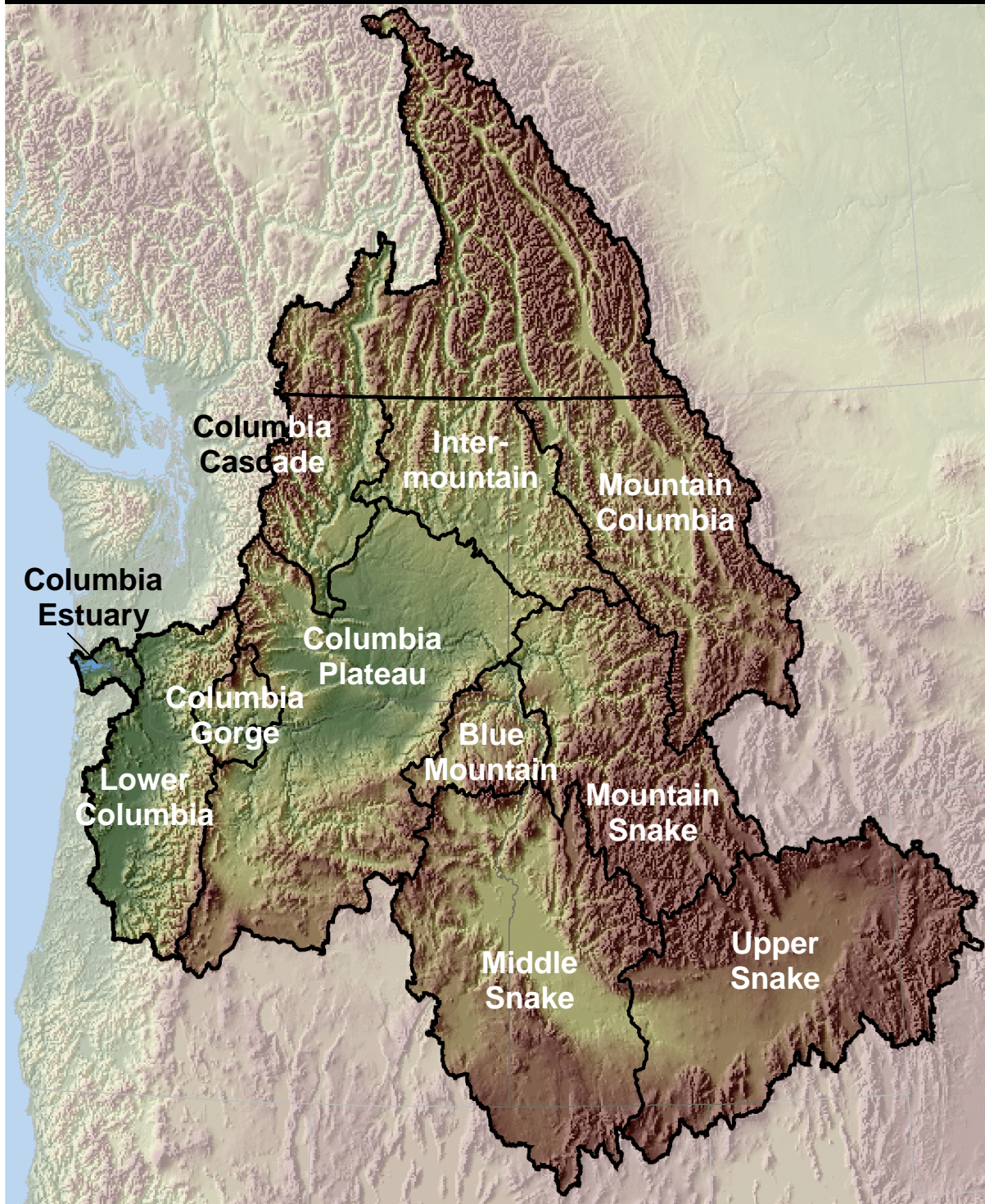


Basin, Province and Subbasin Reports

Summaries and Project Reviews



Columbia River Basin



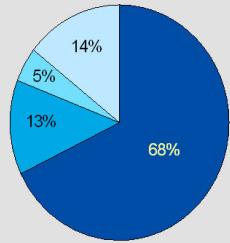
Columbia River Basin

BPA Spending, FY 2001-2004

FY 2001	\$124,786,872
FY 2002	\$155,935,296
FY 2003	\$152,928,370
FY 2004	\$146,434,129

Total Spending \$580,084,668

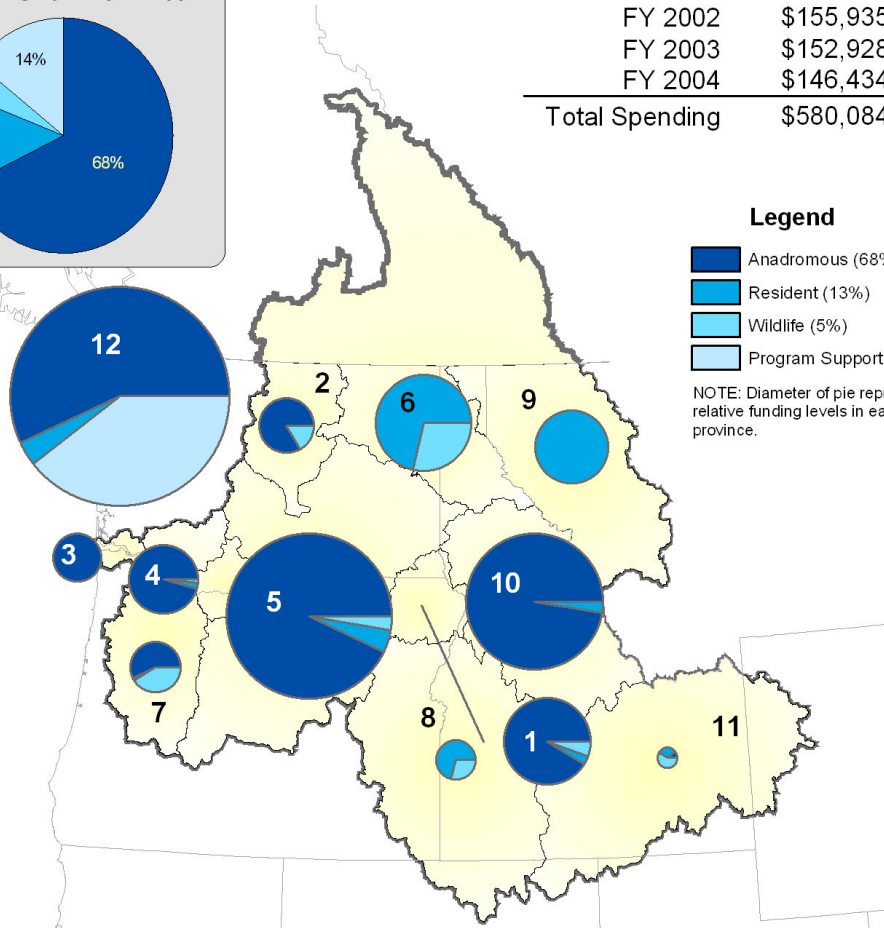
Columbia River Basin-wide Spending by Project Type



Legend

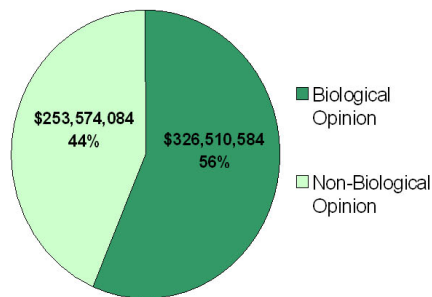
- Anadromous (68%)
- Resident (13%)
- Wildlife (5%)
- Program Support (14%)

NOTE: Diameter of pie represents relative funding levels in each province.



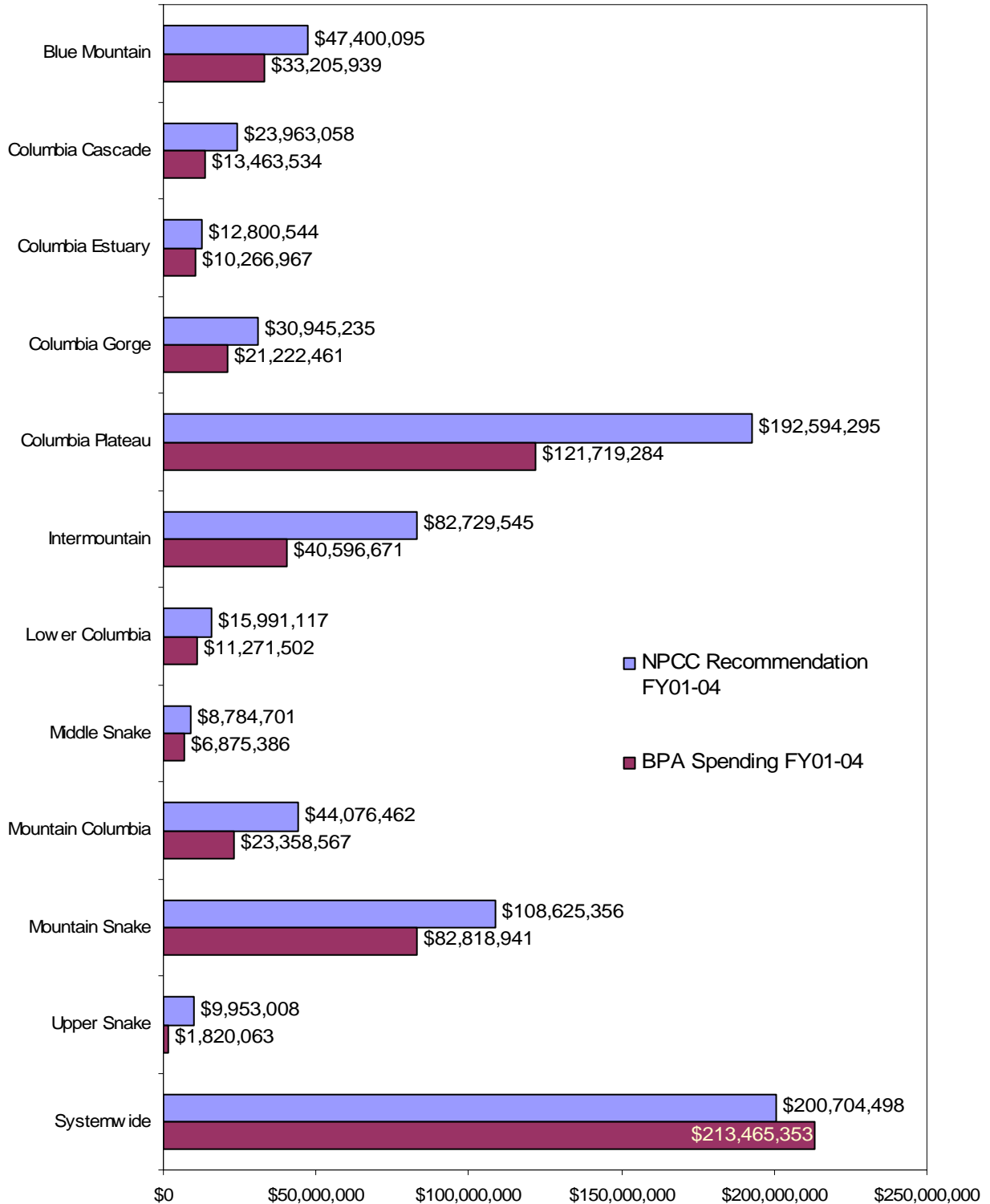
Biological Opinion Funding, FY 2001-2004 NMFS & USFWS Designated Projects

	BiOp	Non-BiOp
Blue Mountain	\$28,869,622	\$4,336,316
Columbia Cascade	\$3,424,237	\$10,039,297
Columbia Estuary	\$9,683,462	\$583,505
Columbia Gorge	\$9,751,945	\$11,470,516
Columbia Plateau	\$67,254,500	\$54,464,783
Intermountain	\$2,379,548	\$38,217,123
Lower Columbia	\$5,126,459	\$6,145,043
Middle Snake	\$0	\$6,875,386
Mountain Columbia	\$18,937,885	\$4,420,683
Mountain Snake	\$53,832,695	\$28,986,246
Upper Snake	\$0	\$1,820,063
Systemwide	\$127,250,230	\$86,215,123

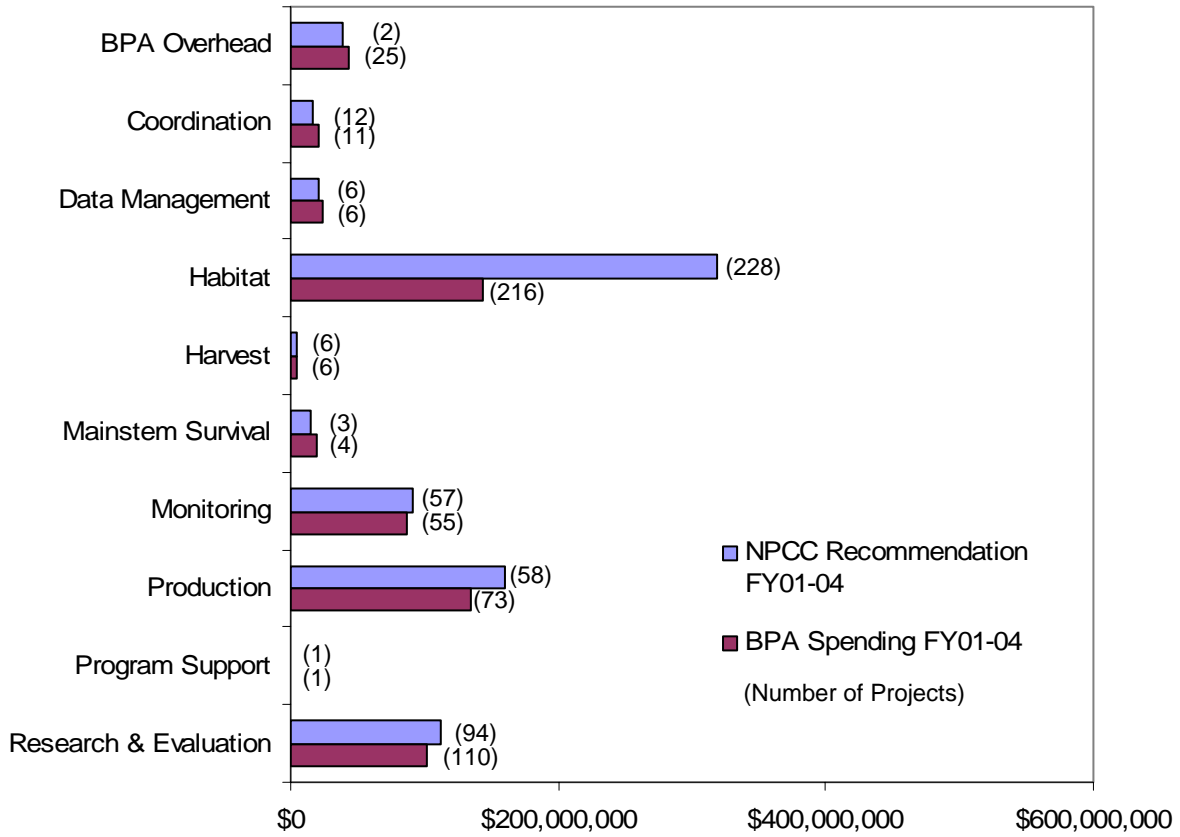


Columbia River Basin FY2001-2004 Spending Summaries

Review Recommendations and BPA Spending by Review Cycle, FY01-04



NPCC Recommendations and BPA Spending by Project Category, FY01-04



NPCC Recommendations and BPA Spending by Project Type, FY01-04

