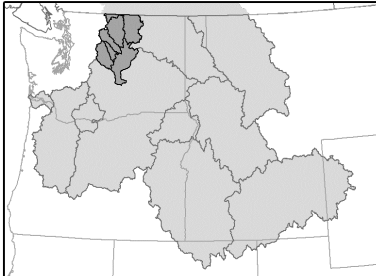


# Columbia Cascade Province

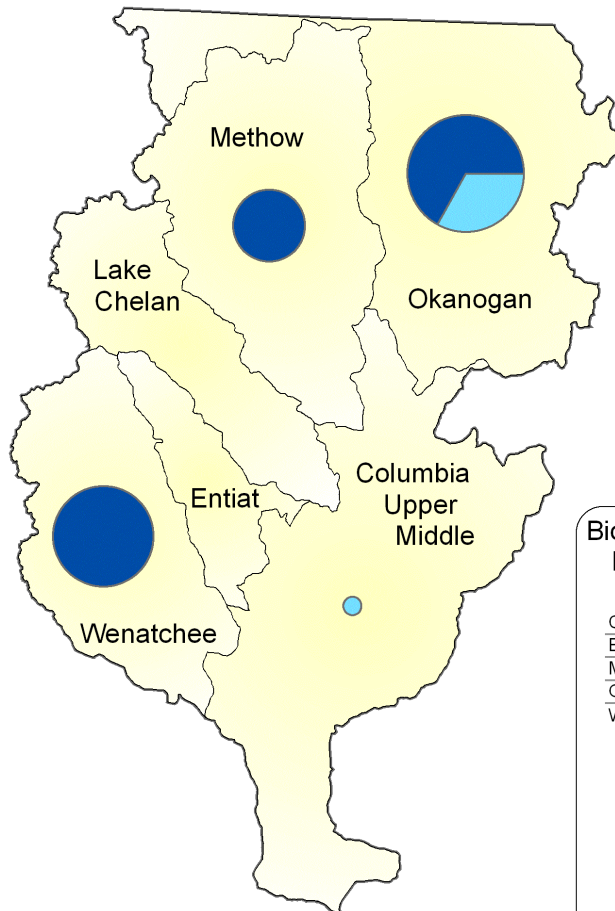


## Columbia Cascade Province



### BPA Spending, FY 2001-2004

FY 2001	\$2,264,158
FY 2002	\$3,266,405
FY 2003	\$3,117,704
FY 2004	\$4,815,266
<b>Total Spending</b>	<b>\$13,463,534</b>



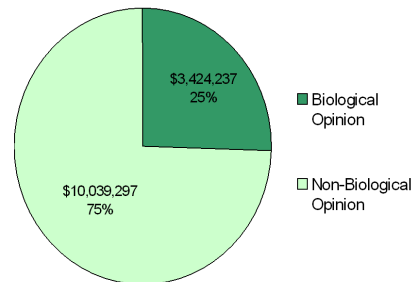
### Legend

- Anadromous (83%)
- Resident (0%)
- Wildlife (17%)

NOTE: Diameter of pie represents relative funding levels in each subbasin.

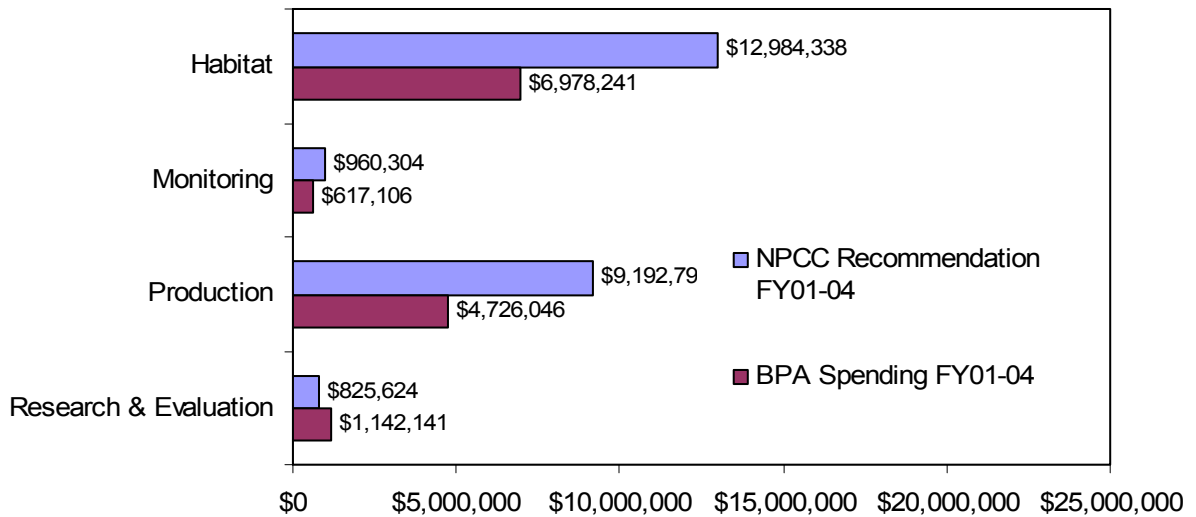
### Biological Opinion Funding, FY 2001-2004 NMFS & USFWS Designated Projects

	BiOp	Non BiOp
Columbia Upper Middle	\$0	\$152,547
Entiat	\$0	\$0
Methow	\$379	\$2,382,695
Okanogan	\$3,253,258	\$3,013,123
Wenatchee	\$170,600	\$4,490,932

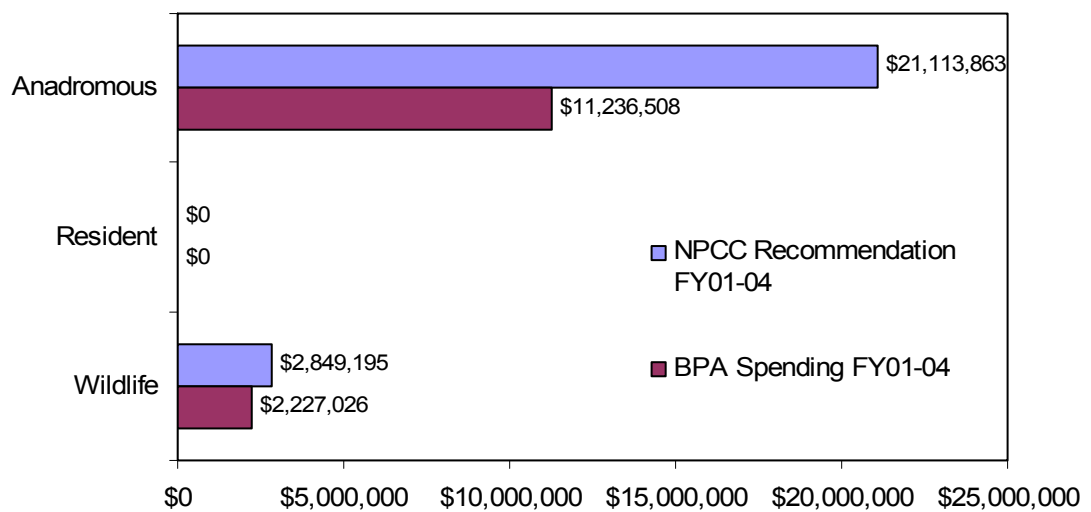


## Columbia Cascade Province FY 2001-2004 Spending Summaries

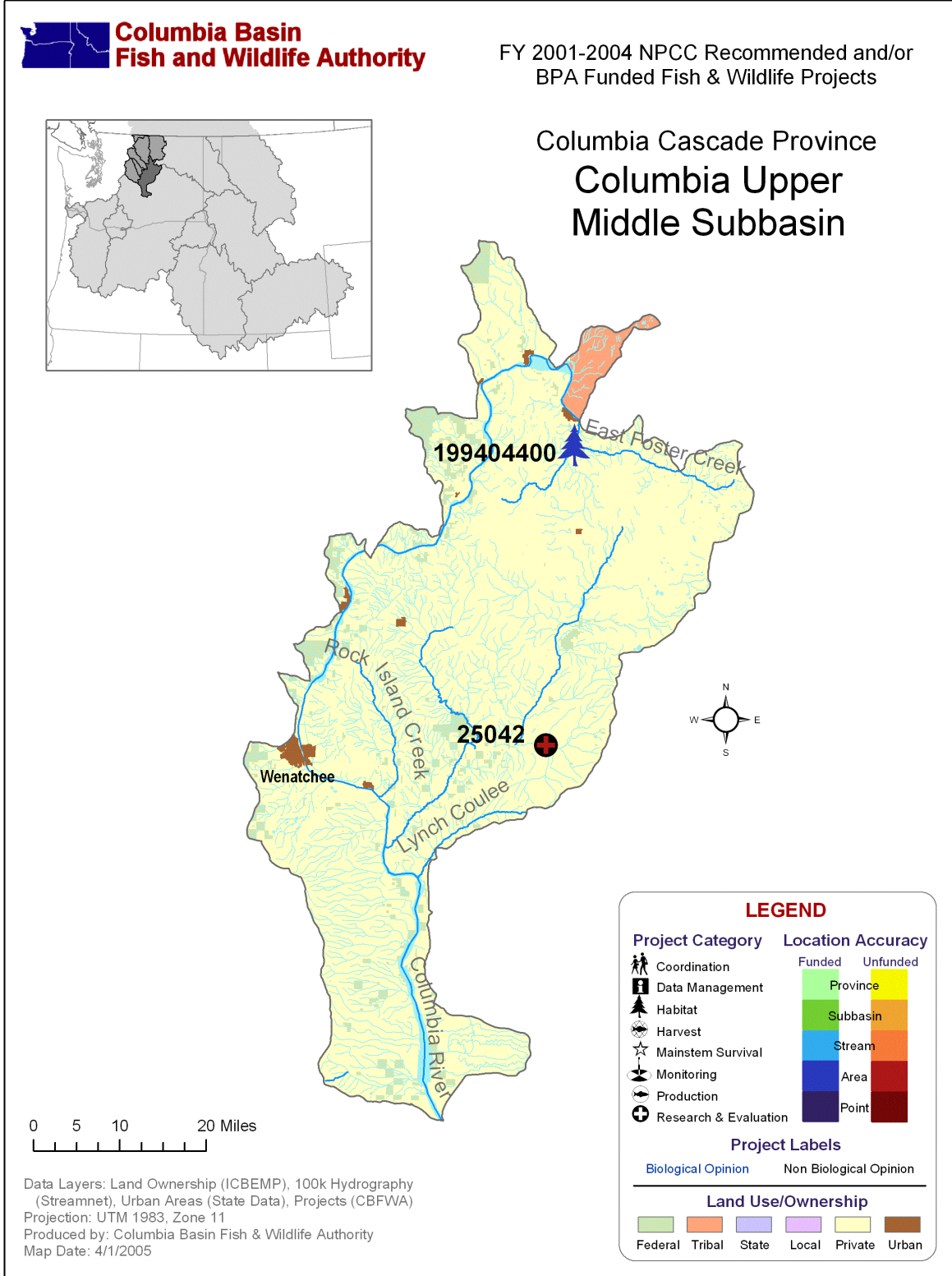
### NPCC Recommendations and BPA Spending by Project Category, FY01-04



### NPCC Recommendations and BPA Spending by Project Type, FY01-04



# Columbia Upper Middle Subbasin

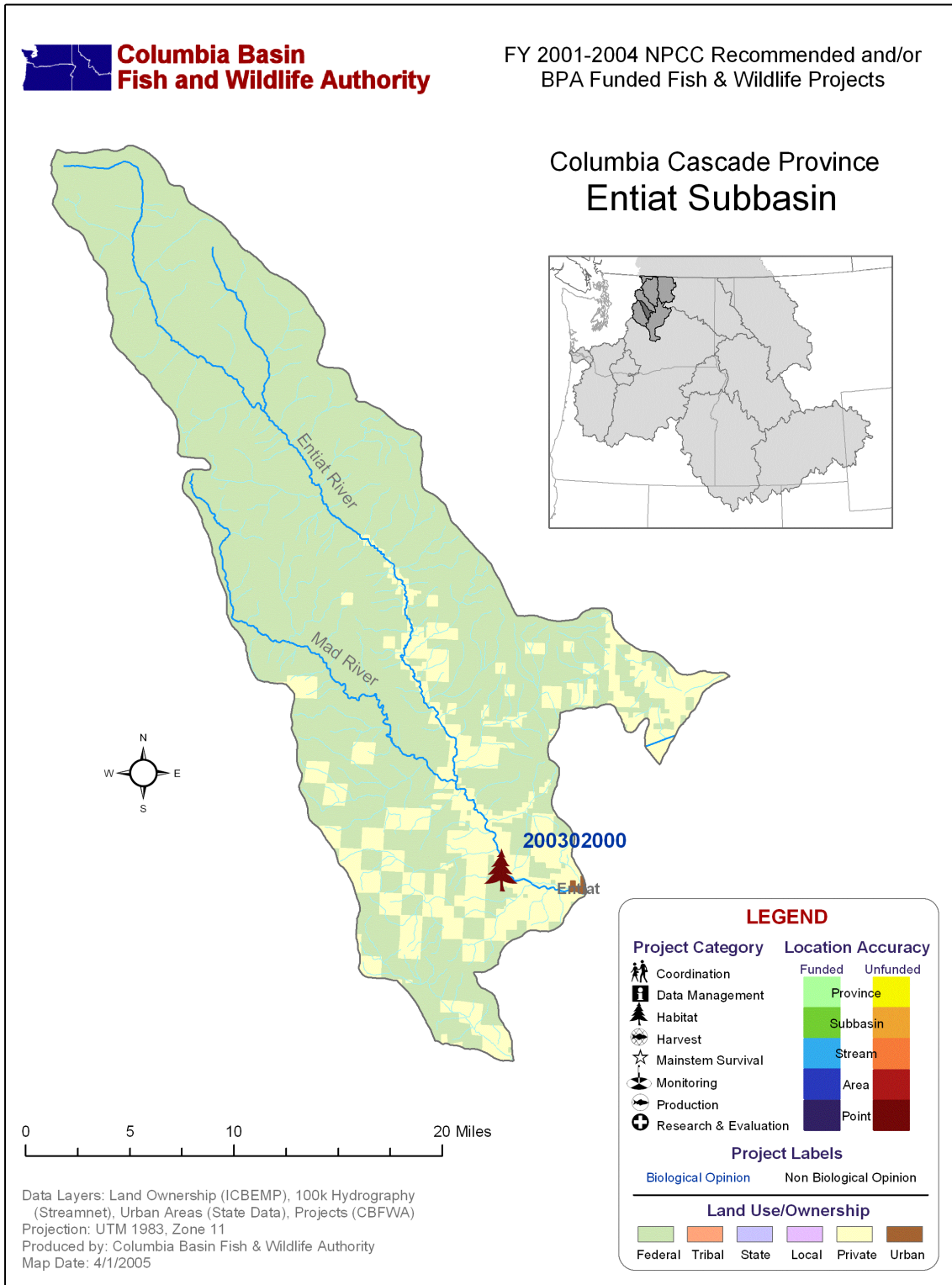


## Projects in the Columbia Upper Middle Subbasin

<i>Project ID</i>	<i>Project Title</i>				<i>Review Cycle</i>		<i>BiOp?</i>	
25042	Pygmy rabbit recovery - captive breeding				Columbia Plateau		no	
	FY	2001	2002	2003	2004	Type	Category	Accuracy
	NPCC Rec	\$ 0	\$220,914	\$120,102	\$ 0	Wildlife	Research & Evaluation	area
	BPA Spent	\$ 0	\$ 0	\$ 0	\$ 0			
<i>199404400</i>	<i>Enhance, Protect, and Maintain Shrubsteppe Habitat on the Sagebrush Flat Wildlife Area (SFWA)</i>				<i>Columbia Plateau</i>		<i>no</i>	
	FY	2001	2002	2003	2004	Type	Category	Accuracy
	NPCC Rec	\$ 0	\$908,375	\$249,363	\$249,362	Wildlife	Habitat	area
	BPA Spent	\$ 0	\$79,669	\$72,878	\$ 0			

Projects in *italics* have preliminary results data included in Volume I.

# Entiat Subbasin



## Projects in the Entiat Subbasin

<i>Project ID</i>	<i>Project Title</i>				<i>Review Cycle</i>		<i>BiOp?</i>	
200302000	Hanan-Detwiler Passage Improvements				Columbia Cascade		yes	
	FY	2001	2002	2003	2004	Type	Category	Accuracy
	NPCC Rec	\$ 0	\$ 0	\$85,000	\$ 0	Anadromous	Habitat	point
	BPA Spent	\$ 0	\$ 0	\$ 0	\$ 0			

# Lake Chelan Subbasin



**Columbia Basin  
Fish and Wildlife Authority**

FY 2001-2004 NPCC Recommended and/or  
BPA Funded Fish & Wildlife Projects

## Columbia Cascade Province Lake Chelan Subbasin



**LEGEND**

<b>Project Category</b>	<b>Location Accuracy</b>
Coordination	Province
Data Management	Subbasin
Habitat	Stream
Harvest	Area
Mainstem Survival	Point
Monitoring	
Production	
Research & Evaluation	

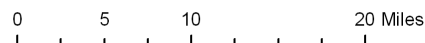
**Project Labels**

Biological Opinion      Non Biological Opinion

---

**Land Use/Ownership**

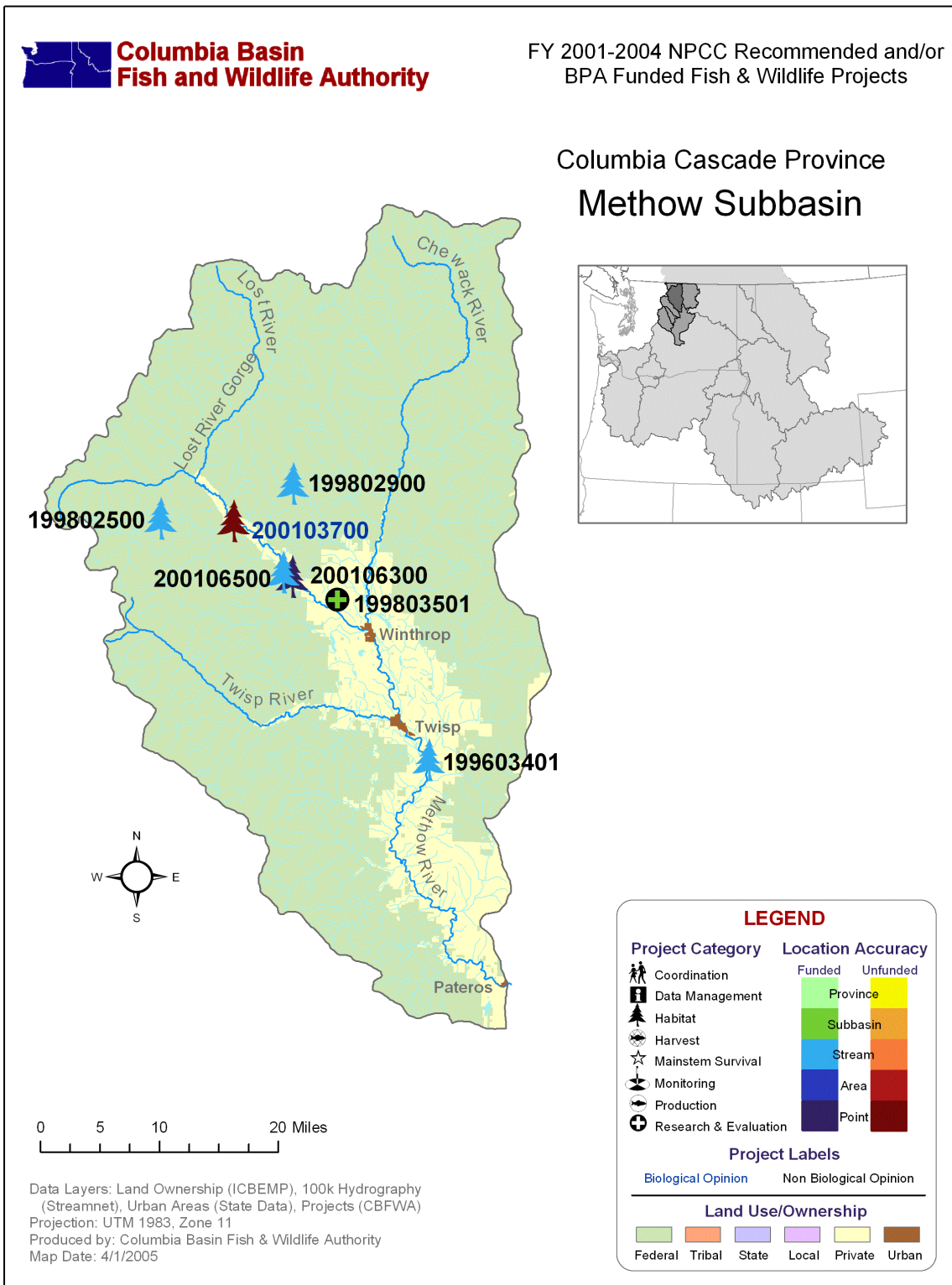
Federal	Tribal	State	Local	Private	Urban
---------	--------	-------	-------	---------	-------



Data Layers: Land Ownership (ICBEMP), 100k Hydrography (Streamnet), Urban Areas (State Data), Projects (CBFWA)  
 Projection: UTM 1983, Zone 11  
 Produced by: Columbia Basin Fish & Wildlife Authority  
 Map Date: 4/1/2005



# Methow Subbasin





## Projects in the Methow Subbasin

<i>Project ID</i>	<i>Project Title</i>					<i>Review Cycle</i>		<i>BiOp?</i>
199603401	Methow River Valley Irrigation District					FY 1997		no
	FY	2001	2002	2003	2004	Type	Category	Accuracy
	NPCC Rec	\$ 0	\$ 0	\$ 0	\$ 0	Anadromous	Habitat	stream
	BPA Spent	\$20,232	\$160,112	\$38,210	\$1,522,710			
199802500	Restore Early Winters Creek Habitat					FY 1997		no
	FY	2001	2002	2003	2004	Type	Category	Accuracy
	NPCC Rec	\$ 0	\$ 0	\$ 0	\$ 0	Anadromous	Habitat	stream
	BPA Spent	\$26,840	\$23,798	\$8,420	\$ 0			
199802900	Restore Goat Creek In-Stream					FY 1997		no
	FY	2001	2002	2003	2004	Type	Category	Accuracy
	NPCC Rec	\$ 0	\$ 0	\$ 0	\$ 0	Anadromous	Habitat	stream
	BPA Spent	\$21,223	\$149,263	\$19,427	\$ 0			
199803501	Watershed Scale Response of Stream Habitat to Abandoned Mine Waste					FY 2000		no
	FY	2001	2002	2003	2004	Type	Category	Accuracy
	NPCC Rec	\$ 0	\$ 0	\$ 0	\$ 0	Anadromous	Research & Evaluation	subbasin
	BPA Spent	\$29,780	\$57,965	\$52,761	\$ 676			
200103700	Arrowleaf/Methow River Conservation Project					FY 2001 High Priority		yes
	FY	2001	2002	2003	2004	Type	Category	Accuracy
	NPCC Rec	\$2,500,000	\$ 0	\$ 0	\$ 0	Anadromous	Habitat	point
	BPA Spent	\$ 379	\$ 0	\$ 0	\$ 0			
200106300	Methow Basin Screening					FY 2001 Action Plan		no
	FY	2001	2002	2003	2004	Type	Category	Accuracy
	NPCC Rec	\$250,000	\$ 0	\$ 0	\$ 0	Anadromous	Habitat	point
	BPA Spent	\$ 0	\$211,578	\$18,099	\$ 0			
200106500	Hancock Springs Passage and Habitat Restoration Improvements					FY 2001 Action Plan		no
	FY	2001	2002	2003	2004	Type	Category	Accuracy
	NPCC Rec	\$49,941	\$ 0	\$ 0	\$ 0	Anadromous	Habitat	stream
	BPA Spent	\$ 0	\$ 0	\$21,600	\$ 0			

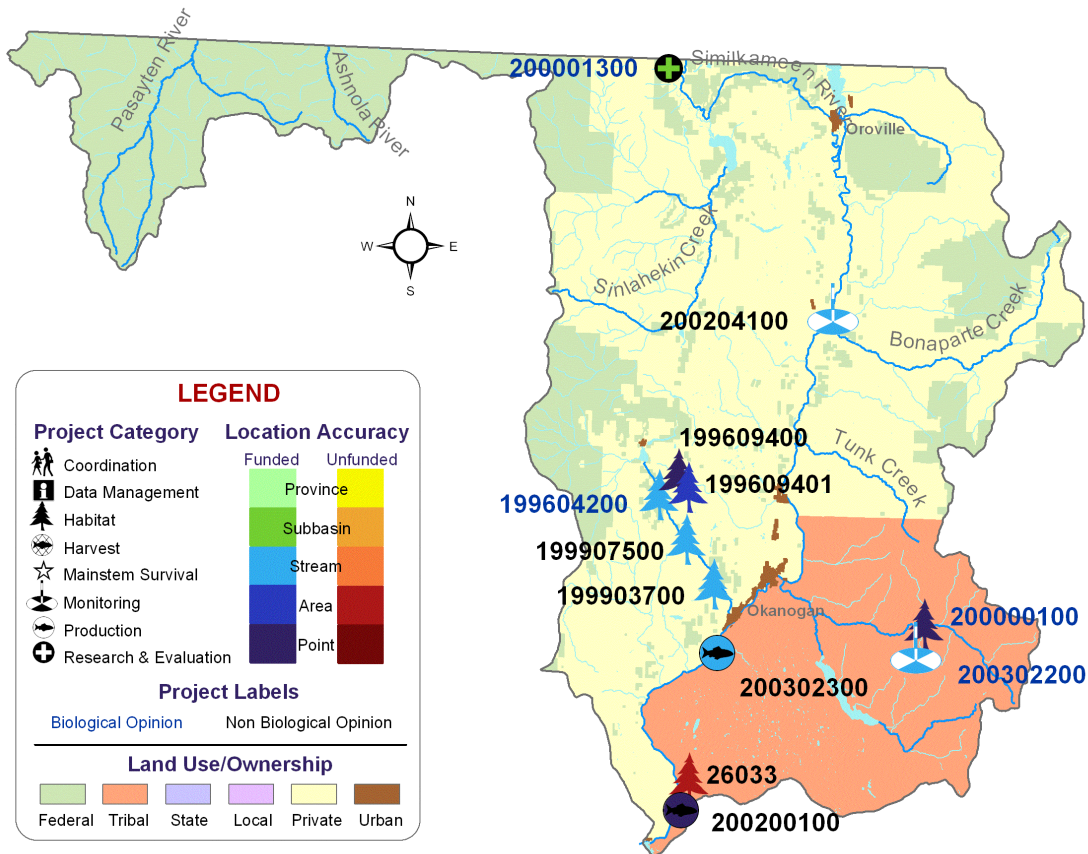
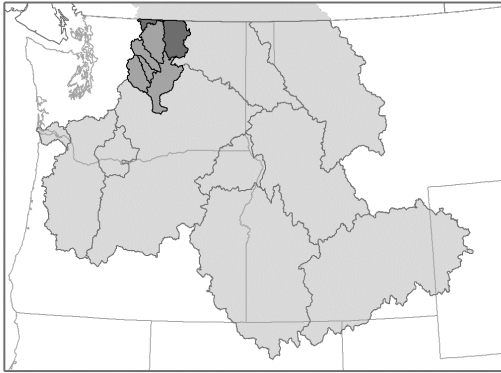
# Okanogan Subbasin



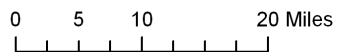
**Columbia Basin  
Fish and Wildlife Authority**

FY 2001-2004 NPCC Recommended and/or  
BPA Funded Fish & Wildlife Projects

Columbia Cascade Province  
Okanogan Subbasin



Data Layers: Land Ownership (ICBEMP), 100k Hydrography (Streamnet), Urban Areas (State Data), Projects (CBFWA)  
 Projection: UTM 1983, Zone 11  
 Produced by: Columbia Basin Fish & Wildlife Authority  
 Map Date: 4/1/2005



## Projects in the Okanogan Subbasin

<i>Project ID</i>	<i>Project Title</i>				<i>Review Cycle</i>		<i>BiOp?</i>	
26033	Okanogan Watershed Land and Water Rights Acquisition				FY 2001 Action Plan		no	
	FY	2001	2002	2003	2004	Type	Category	Accuracy
	NPCC Rec	\$3,437,000	\$ 0	\$ 0	\$ 0	Anadromous	Habitat	area
	BPA Spent	\$ 0	\$ 0	\$ 0	\$ 0			
199604200	Restore and Enhance Anadromous Fish Populations and Habitat in Salmon Creek				Columbia Cascade		yes	
	FY	2001	2002	2003	2004	Type	Category	Accuracy
	NPCC Rec	\$2,030,000	\$353,790	\$365,819	\$378,257	Anadromous	Habitat	stream
	BPA Spent	\$62,640	\$445,611	\$651,929	\$499,431			
199609400	<i>Increase Sharp-tailed Grouse and Mule Deer Populations and Enhance Shrubsteppe/Riparian Habitats on the Scotch Creek Wildlife Area</i>				<i>Columbia Cascade</i>		<i>no</i>	
	FY	2001	2002	2003	2004	Type	Category	Accuracy
	NPCC Rec	\$261,622	\$270,517	\$279,715	\$289,225	Wildlife	Habitat	point
	BPA Spent	\$1,202,172	\$ 0	\$ 0	\$1,741			
199609401	Scotch Creek Wildlife Area				FY 2001 Ongoing		no	
	FY	2001	2002	2003	2004	Type	Category	Accuracy
	NPCC Rec	\$ 0	\$ 0	\$ 0	\$ 0	Wildlife	Habitat	area
	BPA Spent	\$100,345	\$467,699	\$34,880	\$267,642			
199903700	Salmon Creek Flow/Habitat Survey				FY 2001 Ongoing		no	
	FY	2001	2002	2003	2004	Type	Category	Accuracy
	NPCC Rec	\$ 0	\$ 0	\$ 0	\$ 0	Anadromous	Habitat	stream
	BPA Spent	\$159,516	\$24,183	\$ 0	\$ 0			
199907500	Salmon Creek Fish Barrier Removal				FY 2001 Ongoing		no	
	FY	2001	2002	2003	2004	Type	Category	Accuracy
	NPCC Rec	\$ 0	\$ 0	\$ 0	\$ 0	Anadromous	Habitat	stream
	BPA Spent	\$29,950	\$ 0	\$ 0	\$ 0			
200000100	<i>Improvement of Anadromous Fish Habitat and Passage in Omak Creek</i>				<i>Columbia Cascade</i>		<i>yes</i>	
	FY	2001	2002	2003	2004	Type	Category	Accuracy
	NPCC Rec	\$113,266	\$117,116	\$121,098	\$120,000	Anadromous	Habitat	point
	BPA Spent	\$106,976	\$71,944	\$116,935	\$48,984			

Projects in *italics* have preliminary results data included in Volume I.

## Projects in the Okanogan Subbasin, continued...

<i>Project ID</i>	<i>Project Title</i>					<i>Review Cycle</i>		<i>BiOp?</i>
200001300	<i>Evaluate an Experimental Re-introduction of Sockeye Salmon into Skaha Lake</i>					<i>Columbia Cascade</i>		<i>yes</i>
	FY	2001	2002	2003	2004	Type	Category	Accuracy
	NPCC Rec	\$229,357	\$237,155	\$18,096	\$ 0	Anadromous	Research & Evaluation	subbasin
	BPA Spent	\$291,719	\$576,321	\$85,396	\$47,523			
200200100	Okanogan River Spring /Summer Chinook Acclimation Facility					FY 2001 Action Plan		no
	FY	2001	2002	2003	2004	Type	Category	Accuracy
	NPCC Rec	\$ 0	\$118,676	\$ 0	\$ 0	Anadromous	Production	point
	BPA Spent	\$ 0	\$ 0	\$41,142	\$ 0			
200204100	Columbia Cascade Stream Gauge					FY 2001 Action Plan		no
	FY	2001	2002	2003	2004	Type	Category	Accuracy
	NPCC Rec	\$ 0	\$ 0	\$ 0	\$ 0	Anadromous	Monitoring	stream
	BPA Spent	\$ 0	\$11,090	\$358,166	\$ 0			
200302200	Design and Conduct Monitoring and Evaluation Associated With Reestablishment of Okanogan Basin Natural Production					Columbia Cascade		yes
	FY	2001	2002	2003	2004	Type	Category	Accuracy
	NPCC Rec	\$ 0	\$ 0	\$480,152	\$480,152	Anadromous	Monitoring	stream
	BPA Spent	\$ 0	\$ 0	\$ 0	\$247,850			
200302300	OK-11 Develop And Propagate Local Okanogan River Summer/Fall Chinook					Columbia Cascade		no
	FY	2001	2002	2003	2004	Type	Category	Accuracy
	NPCC Rec	\$ 0	\$ 0	\$393,500	\$150,000	Anadromous	Production	stream
	BPA Spent	\$ 0	\$ 0	\$ 0	\$314,597			

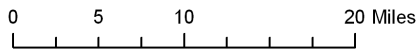
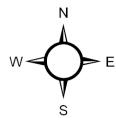
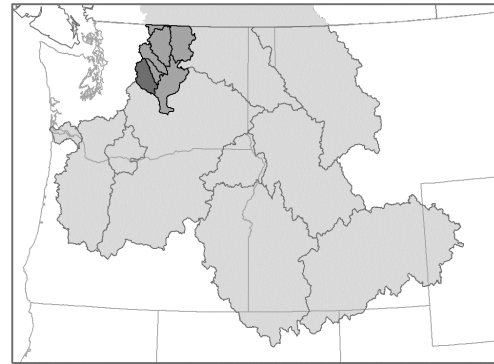
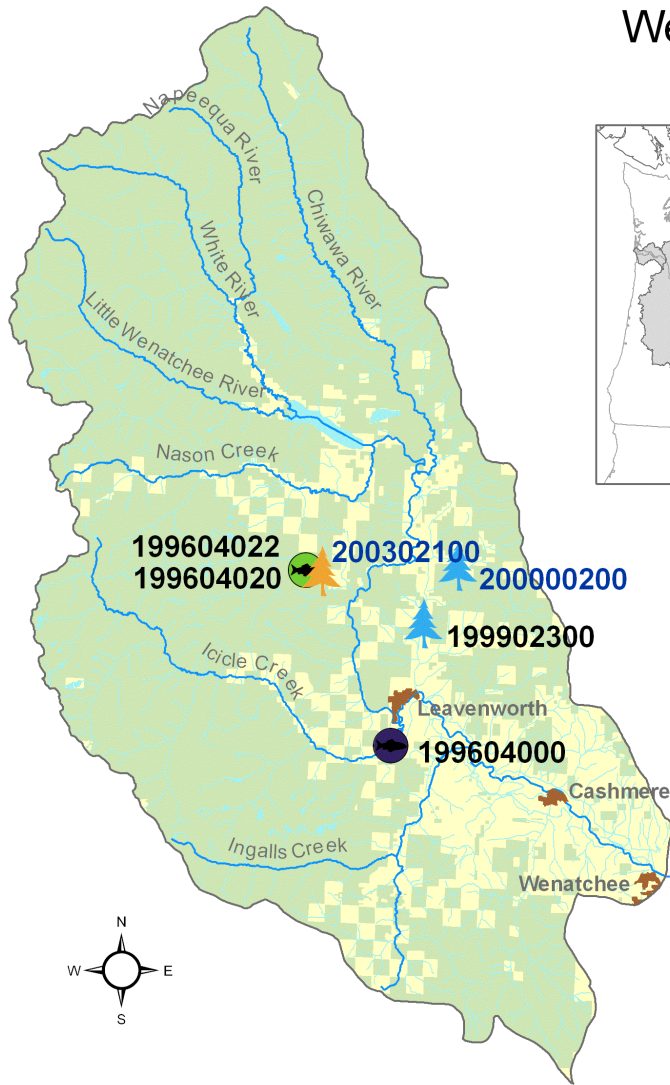
Projects in *italics* have preliminary results data included in Volume I.

# Wenatchee Subbasin



FY 2001-2004 NPCC Recommended and/or BPA Funded Fish & Wildlife Projects

## Columbia Cascade Province Wenatchee Subbasin



Data Layers: Land Ownership (ICBEMP), 100k Hydrography (Streamnet), Urban Areas (State Data), Projects (CBFWA)  
 Projection: UTM 1983, Zone 11  
 Produced by: Columbia Basin Fish & Wildlife Authority  
 Map Date: 4/1/2005

**LEGEND**

<b>Project Category</b>	<b>Location Accuracy</b>										
<ul style="list-style-type: none"> <li> Coordination</li> <li> Data Management</li> <li> Habitat</li> <li> Harvest</li> <li> Mainstem Survival</li> <li> Monitoring</li> <li> Production</li> <li> Research &amp; Evaluation</li> </ul>	<table border="0"> <tr> <td>Funded</td> <td>Unfunded</td> </tr> <tr> <td></td> <td></td> </tr> <tr> <td></td> <td></td> </tr> <tr> <td></td> <td></td> </tr> <tr> <td></td> <td></td> </tr> </table>	Funded	Unfunded								
Funded	Unfunded										

**Project Labels**

Biological Opinion      Non Biological Opinion

**Land Use/Ownership**

Federal	Tribal	State	Local	Private	Urban

## List of Projects in the Wenatchee Subbasin

<i>Project ID</i>	<i>Project Title</i>					<i>Review Cycle</i>		<i>BiOp?</i>
199604000	<i>Evaluate The Feasibility and Risks of Coho Reintroduction in Mid-Columbia</i>					<i>Columbia Cascade</i>		<i>no</i>
	FY	2001	2002	2003	2004	Type	Category	Accuracy
	NPCC Rec	\$2,053,201	\$2,123,009	\$2,140,809	\$2,213,597	Anadromous	Production	point
	BPA Spent	\$2,992	\$684,996	\$1,576,779	\$1,864,113			
199604020	Coho Supplementation in Mid Columbia O&M					FY 2000		no
	FY	2001	2002	2003	2004	Type	Category	Accuracy
	NPCC Rec	\$ 0	\$ 0	\$ 0	\$ 0	Anadromous	Production	subbasin
	BPA Spent	\$162,042	\$43,389	\$ 0	\$ 0			
199604022	Coho Supplementation in Mid Columbia Construction					FY 2000		no
	FY	2001	2002	2003	2004	Type	Category	Accuracy
	NPCC Rec	\$ 0	\$ 0	\$ 0	\$ 0	Anadromous	Production	subbasin
	BPA Spent	\$35,996	\$ 0	\$ 0	\$ 0			
199902300	Chumstick Creek Northroad					FY 1999		no
	FY	2001	2002	2003	2004	Type	Category	Accuracy
	NPCC Rec	\$ 0	\$ 0	\$ 0	\$ 0	Anadromous	Habitat	stream
	BPA Spent	\$11,356	\$109,268	\$ 1	\$ 0			
200000200	<i>Remove 23 Migrational Barriers and Restore Instream and Riparian Habitat on Chumstick Creek</i>					<i>FY 2000</i>		<i>yes</i>
	FY	2001	2002	2003	2004	Type	Category	Accuracy
	NPCC Rec	\$ 0	\$ 0	\$ 0	\$ 0	Anadromous	Habitat	stream
	BPA Spent	\$ 0	\$149,519	\$21,081	\$ 0			
200302100	Comprehensive Inventory and Prioritization of Fish Passage and Screening Problems in the Wenatchee and Entiat Subbasins					Columbia Cascade		yes
	FY	2001	2002	2003	2004	Type	Category	Accuracy
	NPCC Rec	\$ 0	\$ 0	\$277,436	\$277,436	Anadromous	Habitat	subbasin
	BPA Spent	\$ 0	\$ 0	\$ 0	\$ 0			

Projects in *italics* have preliminary results data included in Volume I.