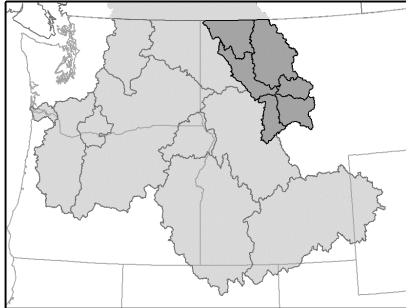


Mountain Columbia Province

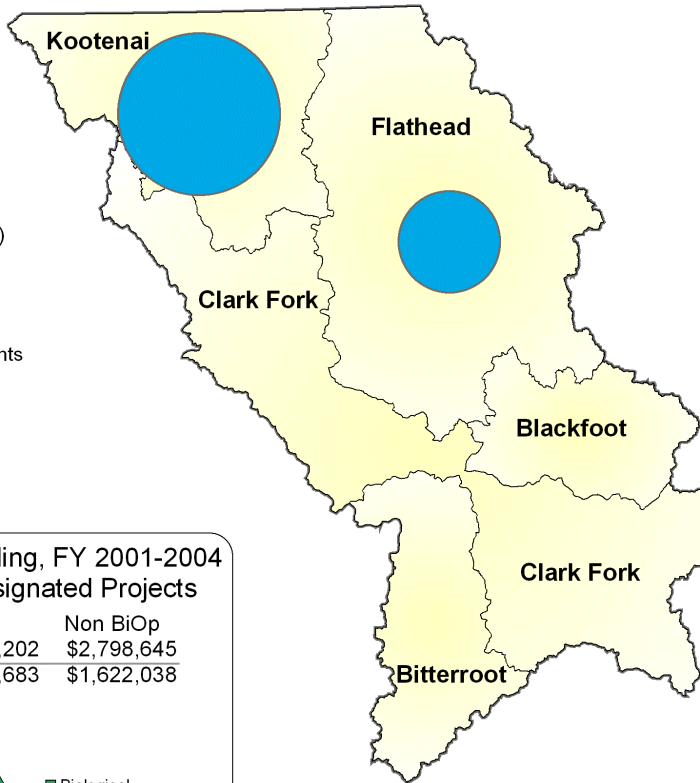


Mountain Columbia Province



BPA Spending, FY 2001-2004

FY 2001	\$4,521,289
FY 2002	\$5,316,853
FY 2003	\$6,623,104
FY 2004	\$6,897,321
Total Spending	\$23,358,567



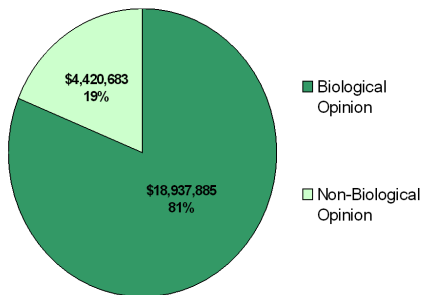
Legend

- Anadromous (<1%)
- Resident (99%)
- Wildlife (0%)

Note: Diameter of pie represents relative funding levels in each subbasin.

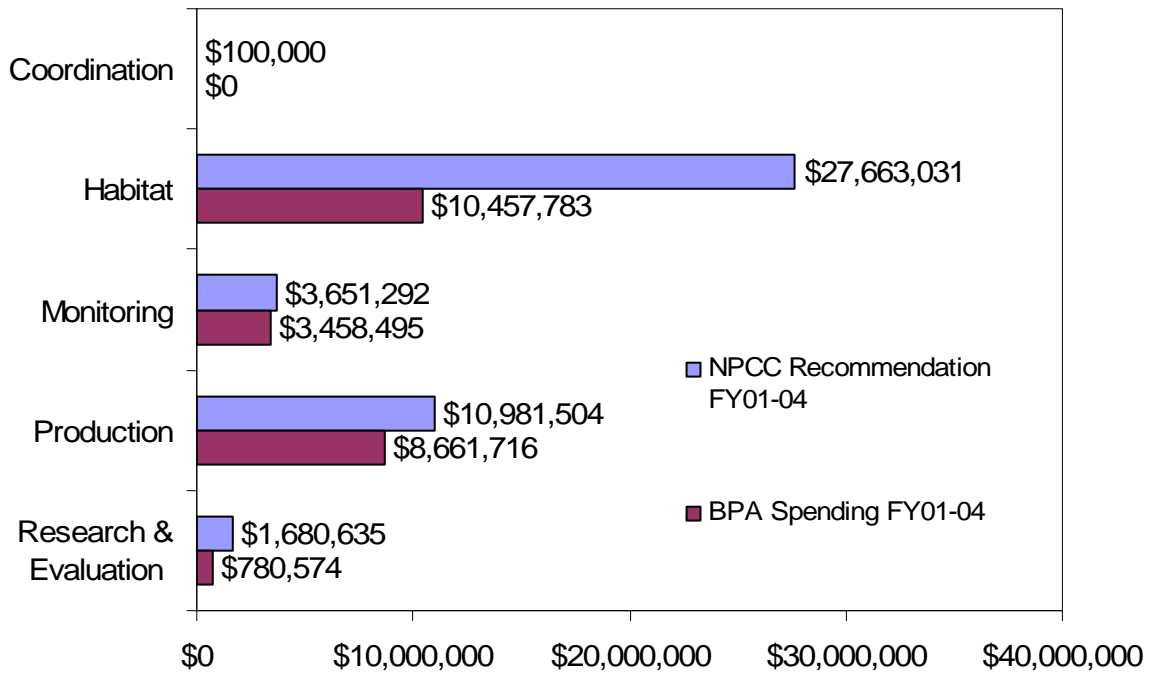
Biological Opinion Funding, FY 2001-2004 NMFS & USFWS Designated Projects

	BiOp	Non BiOp
Flathead	\$3,784,202	\$2,798,645
Kootenai	\$15,153,683	\$1,622,038

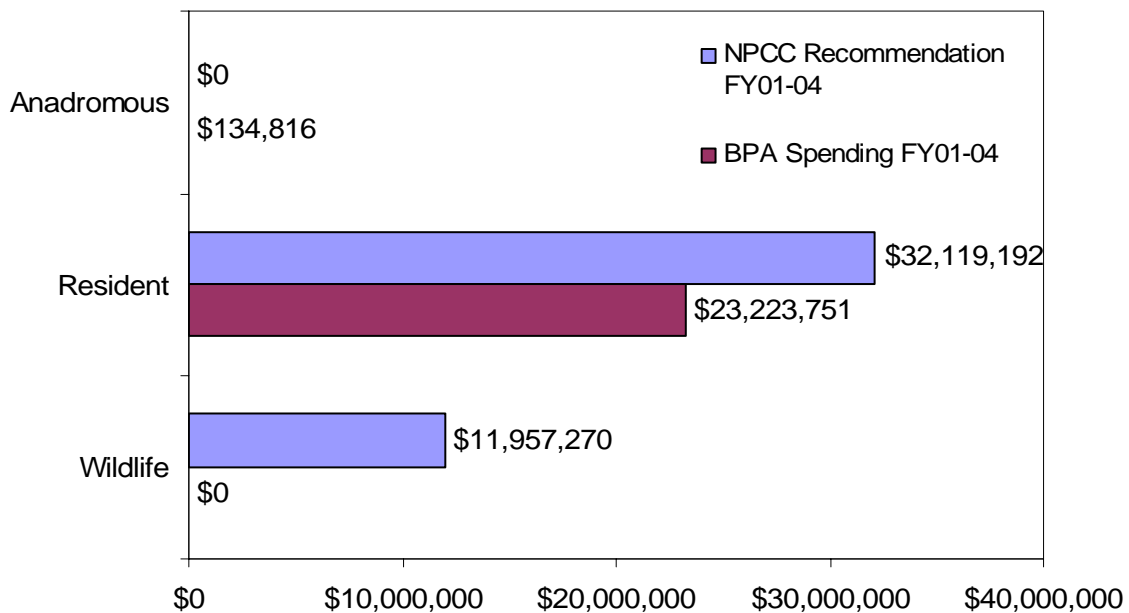


Mountain Columbia Province FY 2001-2004 Spending Summaries

NPCC Recommendations and BPA Spending by Project Category, FY01-04



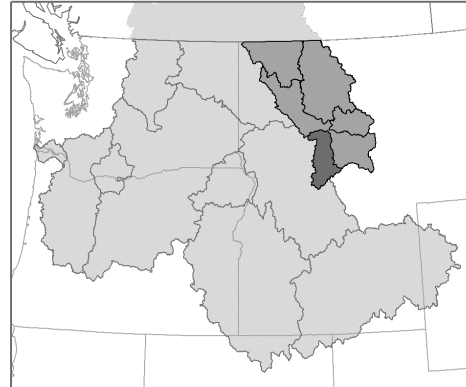
NPCC Recommendations and BPA Spending by Project Type, FY01-04



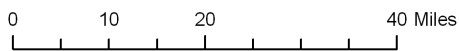
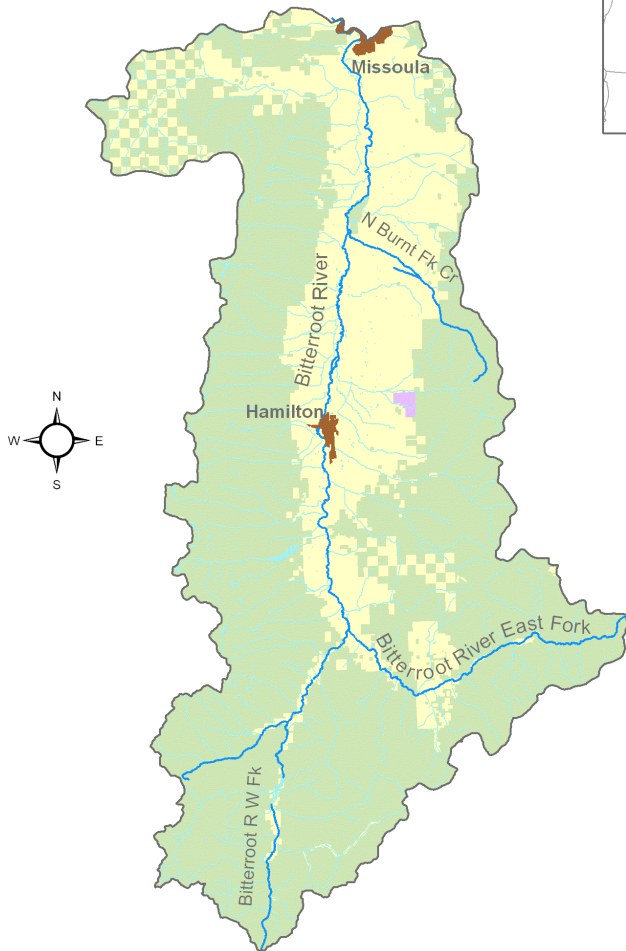
Bitterroot Subbasin



FY 2001-2004 NPCC Recommended and/or BPA Funded Fish & Wildlife Projects



Mountain Columbia Province
Bitterroot Subbasin



Data Layers: Land Ownership (ICBEMP), 100k Hydrography (Streamnet), Urban Areas (State Data), Projects (CBFWA)
 Projection: UTM 1983, Zone 11
 Produced by: Columbia Basin Fish & Wildlife Authority
 Map Date: 4/2/2005

LEGEND

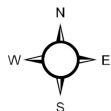
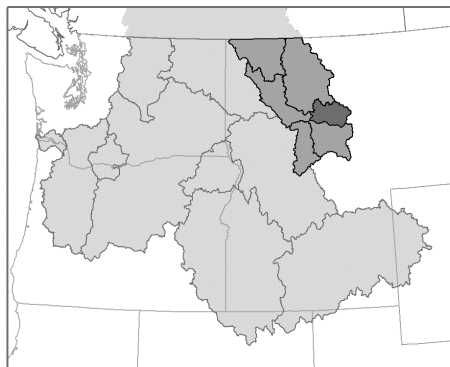
Project Category	Location Accuracy												
<ul style="list-style-type: none"> Coordination Data Management Habitat Harvest Mainstem Survival Monitoring Production Research & Evaluation 	<table border="0"> <tr> <td>Funded</td> <td>Unfunded</td> </tr> <tr> <td> Province</td> <td> Province</td> </tr> <tr> <td> Subbasin</td> <td> Subbasin</td> </tr> <tr> <td> Stream</td> <td> Stream</td> </tr> <tr> <td> Area</td> <td> Area</td> </tr> <tr> <td> Point</td> <td> Point</td> </tr> </table>	Funded	Unfunded	Province	Province	Subbasin	Subbasin	Stream	Stream	Area	Area	Point	Point
Funded	Unfunded												
Province	Province												
Subbasin	Subbasin												
Stream	Stream												
Area	Area												
Point	Point												
Project Labels													
Biological Opinion	Non Biological Opinion												
Land Use/Ownership													
Federal	Tribal	State	Local	Private	Urban								

Blackfoot Subbasin



FY 2001-2004 NPCC Recommended and/or
BPA Funded Fish & Wildlife Projects

Mountain Columbia Province
Blackfoot Subbasin



Data Layers: Land Ownership (ICBEMP), 100k Hydrography (Streamnet), Urban Areas (State Data), Projects (CBFWA)
 Projection: UTM 1983, Zone 11
 Produced by: Columbia Basin Fish & Wildlife Authority
 Map Date: 4/2/2005

LEGEND

Project Category	Location Accuracy												
<ul style="list-style-type: none"> Coordination Data Management Habitat Harvest Mainstem Survival Monitoring Production Research & Evaluation 	<table border="0"> <tr> <td>Funded</td> <td>Unfunded</td> </tr> <tr> <td> Province</td> <td> Province</td> </tr> <tr> <td> Subbasin</td> <td> Subbasin</td> </tr> <tr> <td> Stream</td> <td> Stream</td> </tr> <tr> <td> Area</td> <td> Area</td> </tr> <tr> <td> Point</td> <td> Point</td> </tr> </table>	Funded	Unfunded	Province	Province	Subbasin	Subbasin	Stream	Stream	Area	Area	Point	Point
Funded	Unfunded												
Province	Province												
Subbasin	Subbasin												
Stream	Stream												
Area	Area												
Point	Point												

Project Labels

Biological Opinion Non Biological Opinion

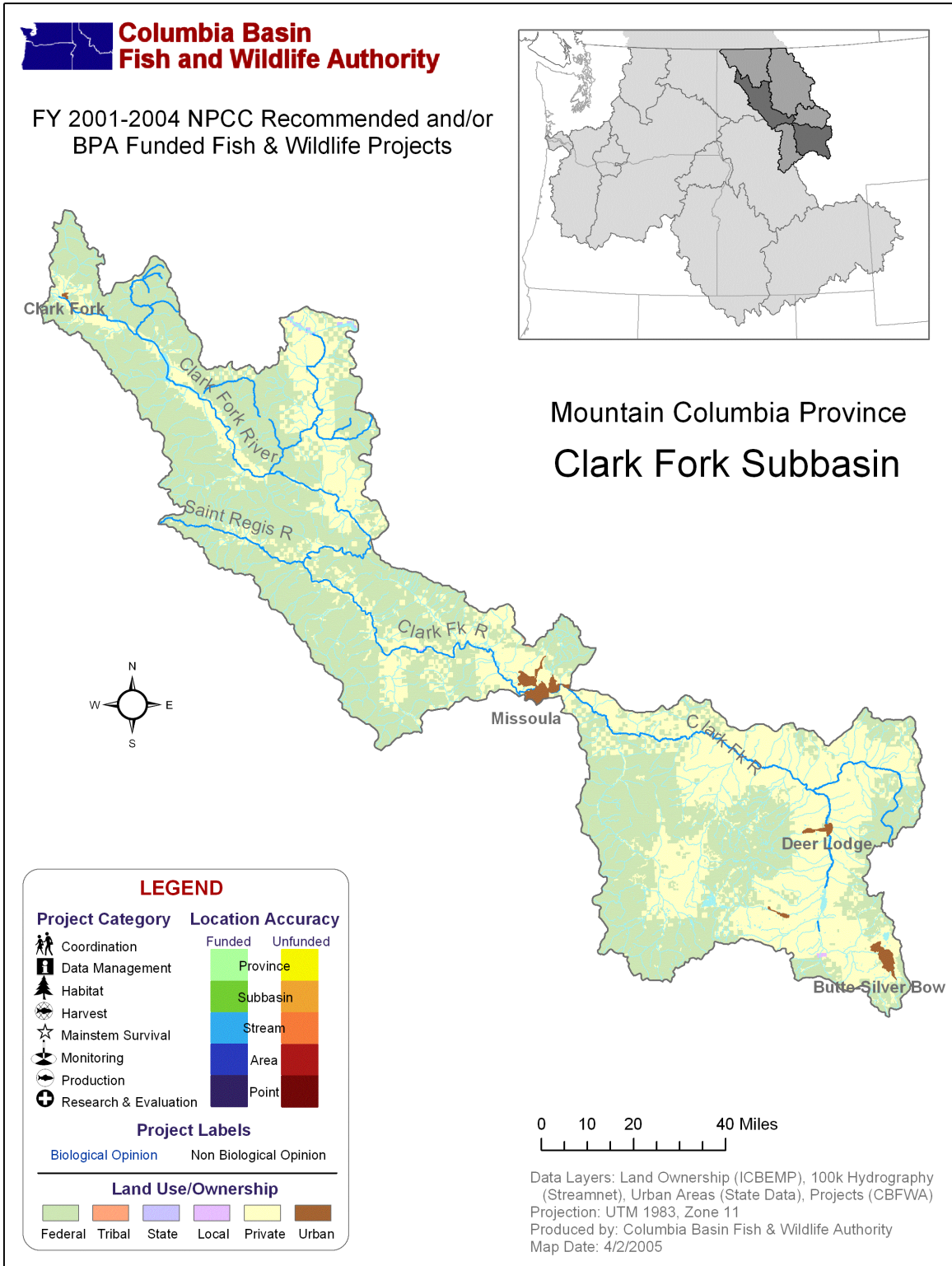
Land Use/Ownership

Federal	Tribal	State	Local	Private	Urban
---------	--------	-------	-------	---------	-------

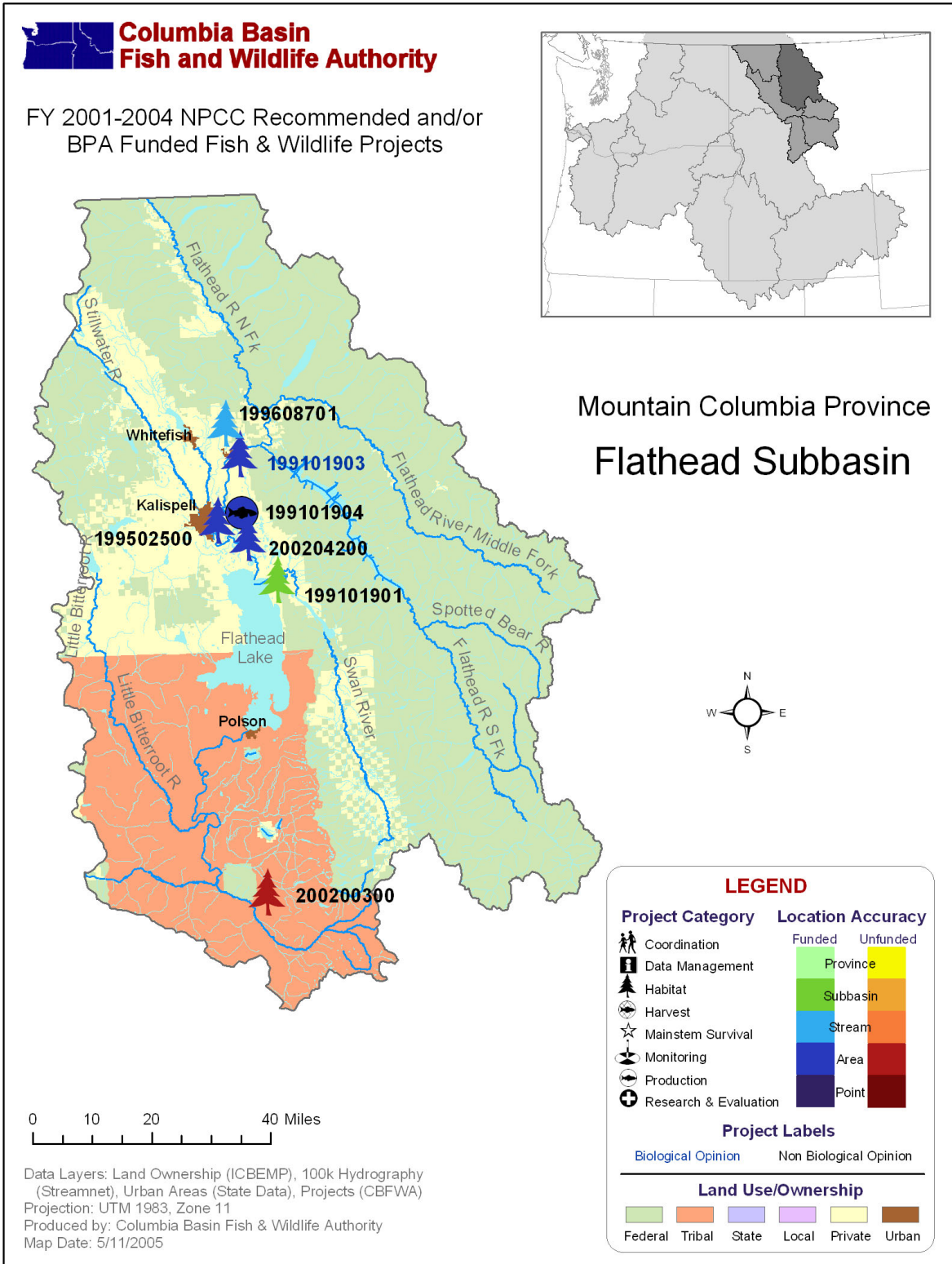
Projects in the Blackfoot Subbasin

<i>Project ID</i>	<i>Project Title</i>				<i>Review Cycle</i>		<i>BiOp?</i>	
200200700	Restoring Bull Trout Habitat in The Blackfoot River's North Fork				Mountain Columbia		no	
	FY	2001	2002	2003	2004	Type	Category	Accuracy
	NPCC Rec	\$ 0	\$330,000	\$10,000	\$75,000	Resident	Habitat	area
	BPA Spent	\$ 0	\$ 0	\$ 0	\$ 0			

Clark Fork Subbasin



Flathead Subbasin

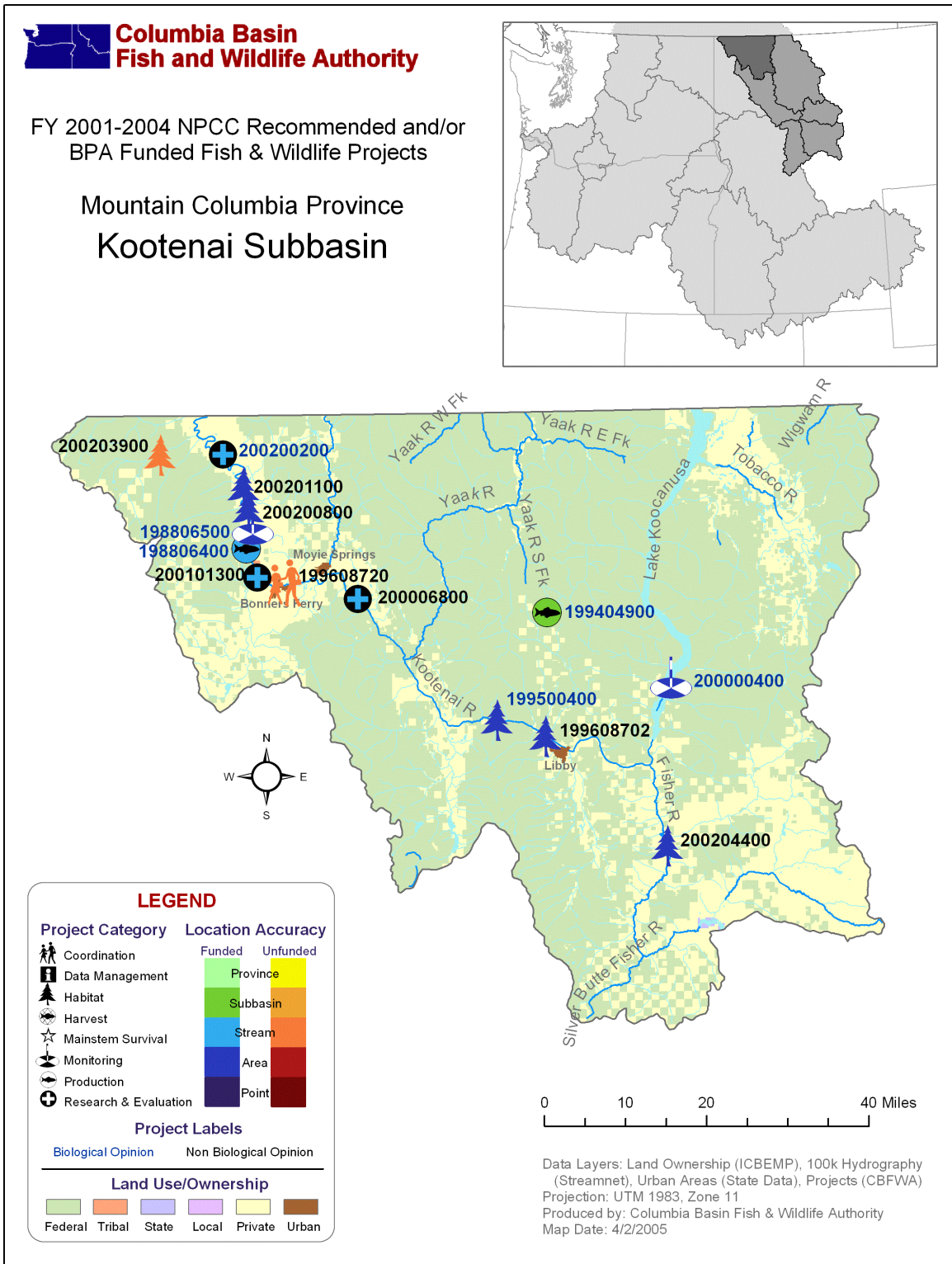


Projects in the Flathead Subbasin

<i>Project ID</i>	<i>Project Title</i>					<i>Review Cycle</i>		<i>BiOp?</i>
199101901	Research, Monitor, and Restore Native Species					Mountain Columbia		no
	FY	2001	2002	2003	2004	Type	Category	Accuracy
	NPCC Rec	\$166,048	\$131,400	\$144,500	\$143,942	Resident	Habitat	subbasin
	BPA Spent	\$231,379	\$109,910	\$196,592	\$74,059			
<i>199101903</i>	<i>Hungry Horse Mitigation</i>					<i>Mountain Columbia</i>		<i>yes</i>
	FY	2001	2002	2003	2004	Type	Category	Accuracy
	NPCC Rec	\$781,432	\$982,850	\$990,000	\$1,165,000	Resident	Habitat	area
	BPA Spent	\$910,298	\$821,492	\$1,149,401	\$903,011			
<i>199101904</i>	<i>Stocking of offsite waters for Hungry Horse Mitigation - Creston National Fish Hatchery</i>					<i>Mountain Columbia</i>		<i>no</i>
	FY	2001	2002	2003	2004	Type	Category	Accuracy
	NPCC Rec	\$160,000	\$106,672	\$109,872	\$113,168	Resident	Production	area
	BPA Spent	\$232,082	\$268,024	\$128,067	\$109,387			
199502500	Flathead River Instream Flow					FY 2000		no
	FY	2001	2002	2003	2004	Type	Category	Accuracy
	NPCC Rec	\$ 0	\$ 0	\$ 0	\$ 0	Resident	Habitat	area
	BPA Spent	\$58,843	\$17,013	\$138,037	\$ 0			
199608701	Focus Watershed Coordination-Flathead River Watershed					FY 2001 Ongoing		no
	FY	2001	2002	2003	2004	Type	Category	Accuracy
	NPCC Rec	\$65,303	\$ 0	\$ 0	\$75,912	Resident	Habitat	stream
	BPA Spent	\$59,987	\$32,261	\$102,398	\$18,757			
200200300	Secure and Restore Critical Fish and Wildlife Habitats					Mountain Columbia		no
	FY	2001	2002	2003	2004	Type	Category	Accuracy
	NPCC Rec	\$ 0	\$4,918,444	\$4,538,826	\$2,500,000	Wildlife	Habitat	area
	BPA Spent	\$ 0	\$ 0	\$ 0	\$ 0			
200204200	Riparian Habitat Preservation - Weaver Slough and McWinegar Slough					Mountain Columbia		no
	FY	2001	2002	2003	2004	Type	Category	Accuracy
	NPCC Rec	\$ 0	\$1,002,000	\$ 0	\$1,020,000	Resident	Habitat	area
	BPA Spent	\$ 0	\$ 0	\$ 0	\$1,021,850			

Projects in *italics* have preliminary results data included in Volume I.

Kootenai Subbasin



Projects in the Kootenai Subbasin

<i>Project ID</i>	<i>Project Title</i>					<i>Review Cycle</i>		<i>BiOp?</i>
198806400	<i>Kootenai River White Sturgeon Studies and Conservation Aquaculture</i>					<i>Mountain Columbia</i>		<i>yes</i>
	FY	2001	2002	2003	2004	Type	Category	Accuracy
	NPCC Rec	\$1,128,568	\$1,160,000	\$2,999,000	\$1,395,000	Resident	Production	stream
	BPA Spent	\$1,247,674	\$1,651,384	\$1,228,444	\$1,390,068			
198806500	Kootenai River Fisheries Recovery Investigations					Mountain Columbia		yes
	FY	2001	2002	2003	2004	Type	Category	Accuracy
	NPCC Rec	\$570,000	\$825,391	\$1,057,804	\$951,697	Resident	Monitoring	area
	BPA Spent	\$701,039	\$717,181	\$863,592	\$906,705			
199404900	Improving the Kootenai River Ecosystem					Mountain Columbia		yes
	FY	2001	2002	2003	2004	Type	Category	Accuracy
	NPCC Rec	\$273,333	\$710,891	\$855,000	\$1,970,000	Resident	Production	subbasin
	BPA Spent	\$271,655	\$471,285	\$710,268	\$953,377			
199500400	<i>Mitigation for the Construction and Operation of Libby Dam</i>					<i>Mountain Columbia</i>		<i>yes</i>
	FY	2001	2002	2003	2004	Type	Category	Accuracy
	NPCC Rec	\$795,000	\$805,000	\$830,000	\$840,000	Resident	Habitat	area
	BPA Spent	\$611,681	\$928,768	\$966,672	\$783,457			
199608702	Focus Watershed Coordination in the Kootenai River Watershed					Mountain Columbia		no
	FY	2001	2002	2003	2004	Type	Category	Accuracy
	NPCC Rec	\$100,000	\$101,500	\$101,750	\$100,000	Resident	Habitat	area
	BPA Spent	\$14,453	\$97,952	\$104,486	\$80,105			
199608720	Focus Watershed Coordination in the Kootenai River Watershed					FY 2001 Ongoing		no
	FY	2001	2002	2003	2004	Type	Category	Accuracy
	NPCC Rec	\$100,000	\$ 0	\$ 0	\$ 0	Resident	Coordination	stream
	BPA Spent	\$ 0	\$ 0	\$ 0	\$ 0			
200000400	Monitor and Protect Bull Trout for Koocanusa Reservoir					Mountain Columbia		yes
	FY	2001	2002	2003	2004	Type	Category	Accuracy
	NPCC Rec	\$60,400	\$62,000	\$62,000	\$62,000	Resident	Monitoring	area
	BPA Spent	\$47,382	\$56,178	\$123,502	\$42,915			

Projects in *italics* have preliminary results data included in Volume I.

Projects in the Kootenai Subbasin, continued...

<i>Project ID</i>	<i>Project Title</i>					<i>Review Cycle</i>		<i>BiOp?</i>
200006800	Impact of Flow Regulation on Riparian Cottonwood Ecosystems					FY 2000		no
	FY	2001	2002	2003	2004	Type	Category	Accuracy
	NPCC Rec	\$ 0	\$ 0	\$ 0	\$ 0	Anadromous	Research & Evaluation	stream
	BPA Spent	\$134,816	\$ 0	\$ 0	\$ 0			
200101300	Evaluate the Effects of Nutrient Supplementation on Benthic Periphyton, Macroinvertebrates, and Juvenile Sturgeon in the Kootenai River					FY 2001 Innovative		no
	FY	2001	2002	2003	2004	Type	Category	Accuracy
	NPCC Rec	\$170,635	\$ 0	\$ 0	\$ 0	Resident	Research & Evaluation	stream
	BPA Spent	\$ 0	\$69,491	\$95,812	\$ 0			
200200200	Assess Feasibility of Enhancing White Sturgeon Spawning Substrate Habitat, Kootenai R., Idaho					Mountain Columbia		yes
	FY	2001	2002	2003	2004	Type	Category	Accuracy
	NPCC Rec	\$ 0	\$350,000	\$100,000	\$1,060,000	Resident	Research & Evaluation	stream
	BPA Spent	\$ 0	\$ 0	\$271,928	\$208,527			
200200800	Reconnection of Floodplain Slough Habitat to the Kootenai River					Mountain Columbia		no
	FY	2001	2002	2003	2004	Type	Category	Accuracy
	NPCC Rec	\$ 0	\$139,974	\$540,000	\$139,974	Resident	Habitat	area
	BPA Spent	\$ 0	\$ 0	\$98,956	\$76,067			
200201100	Implement Floodplain Operational Loss Assessment, Protection, Mitigation and Rehabilitation on the Lower Kootenai River Watershed Ecosystem					Mountain Columbia		no
	FY	2001	2002	2003	2004	Type	Category	Accuracy
	NPCC Rec	\$ 0	\$293,864	\$612,500	\$362,452	Resident	Habitat	area
	BPA Spent	\$ 0	\$75,914	\$444,949	\$328,661			
200203900	Smith Creek Restoration					Mountain Columbia		no
	FY	2001	2002	2003	2004	Type	Category	Accuracy
	NPCC Rec	\$ 0	\$52,680	\$302,680	\$5,000	Resident	Habitat	stream
	BPA Spent	\$ 0	\$ 0	\$ 0	\$ 0			
200204400	Purchase Conservation Easement from Plum Creek Timber Company (PCT) along Fisher River					Mountain Columbia		no
	FY	2001	2002	2003	2004	Type	Category	Accuracy
	NPCC Rec	\$ 0	\$500,000	\$500,000	\$1,500,000	Resident	Habitat	area
	BPA Spent	\$ 0	\$ 0	\$ 0	\$ 375			

This page intentionally left blank.