
COLUMBIA RIVER BASIN
FISH AND WILDLIFE PROGRAM
WORK PLAN FOR
FISCAL YEAR 1996

Columbia Basin Fish and Wildlife Authority
Northwest Power Planning Council

September 22, 1995

Table of Contents

Summary.....	2
Chronology.....	3
Interim Process for Workplan Development	4
Table 1. Recommended Wildlife Projects	6
Table 2. Recommended Resident Fish Projects	7
Table 3. Recommended Anadromous Fish Projects	9
Recommendations.....	14
Appendices	
A.1 Wildlife Projects by Project Number.....	15
A.2 Wildlife Projects by Location	16
A.3 Wildlife Projects by Sponsor	17
B.1 Resident Fish Projects by Project Number.....	19
B.2 Resident Fish Projects by Location	21
B.3 Resident Fish Projects by Sponsor	23
C.1 Anadromous Fish Projects by Project Number	26
C.2 Anadromous Fish Projects by Location	31
C.3 Anadromous Fish Projects by Sponsor	37
C.4 Anadromous Fish Projects by Program Area.....	44
C.5 Anadromous Fish Projects by Program Area (Summary).....	52

Summary

In March 1995, the Northwest Power Planning Council (NPPC) and the Members of the Columbia Basin Fish and Wildlife Authority (CBFWA) endorsed an interim process to set priorities for Bonneville Power Administration funding of projects to carry out the NPPC Fish and Wildlife Program. This process is outlined in the following diagram and called for CBFWA to coordinate this review and priority setting effort. The CBFWA Members, working together with the NPPC and BPA, invested hundreds of person-days to accomplish the task (see Chronology). This document reports the results of the effort.

The Bonneville Power Administration budgeted \$83 million to fund fish and wildlife projects and BPA staff costs in FY 1996 (starting October 1, 1995). This translates into \$77.5 million available for fish and wildlife projects.

FY 1996 Budget	\$83.0 million
BPA staff costs	<u>-5.5 million</u>
Available for F&W projects	\$77.5 million

The Northwest Power Planning Council's Fish and Wildlife Program specifies budget targets of 15% for wildlife, 15% for resident fish and 70% for anadromous fish. CBFWA Members endorsed these targets in the FY 1995 Annual Fish and Wildlife Work Plan adopted in August 1994. The Members re-affirmed their endorsement at their meeting in March 1995.

Based on these percentages, the FY 1996 budget targets are:

Wildlife	\$11.6 million
Resident Fish	11.6 million
Anadromous Fish	<u>54.3 million</u>
	\$77.5 million

To attain these budget targets, the staff of the members of CBFWA and of BPA and NPPC collected information on projects, reviewed that information and evaluated the projects. The Budget Summary shows the overall results.

This project review and evaluation produced the attached lists of projects - for wildlife, resident fish, and anadromous fish. Each table has two basic parts. First part shows projects (and their funding levels in the column "96 Estimate") recommended for BPA funding from the FY 1996 fish and wildlife budget. The first part of each table sums up to each budget target.

The second part of each table identifies additional new projects (column "New") not recommended for funding in FY 1996 from BPA's \$83 million fish and wildlife budget. In the anadromous fish project list, new projects are divided into those potentially implementing requirements under the Endangered Species Act (column "ESA") and other new projects (column "Other"). The tables list the projects in each part in approximate priority order.

The appendices group the projects three ways, sequentially by project number, by subbasin or location, and by project sponsor. Anadromous fish projects are also listed by general area of the Fish and Wildlife Program.

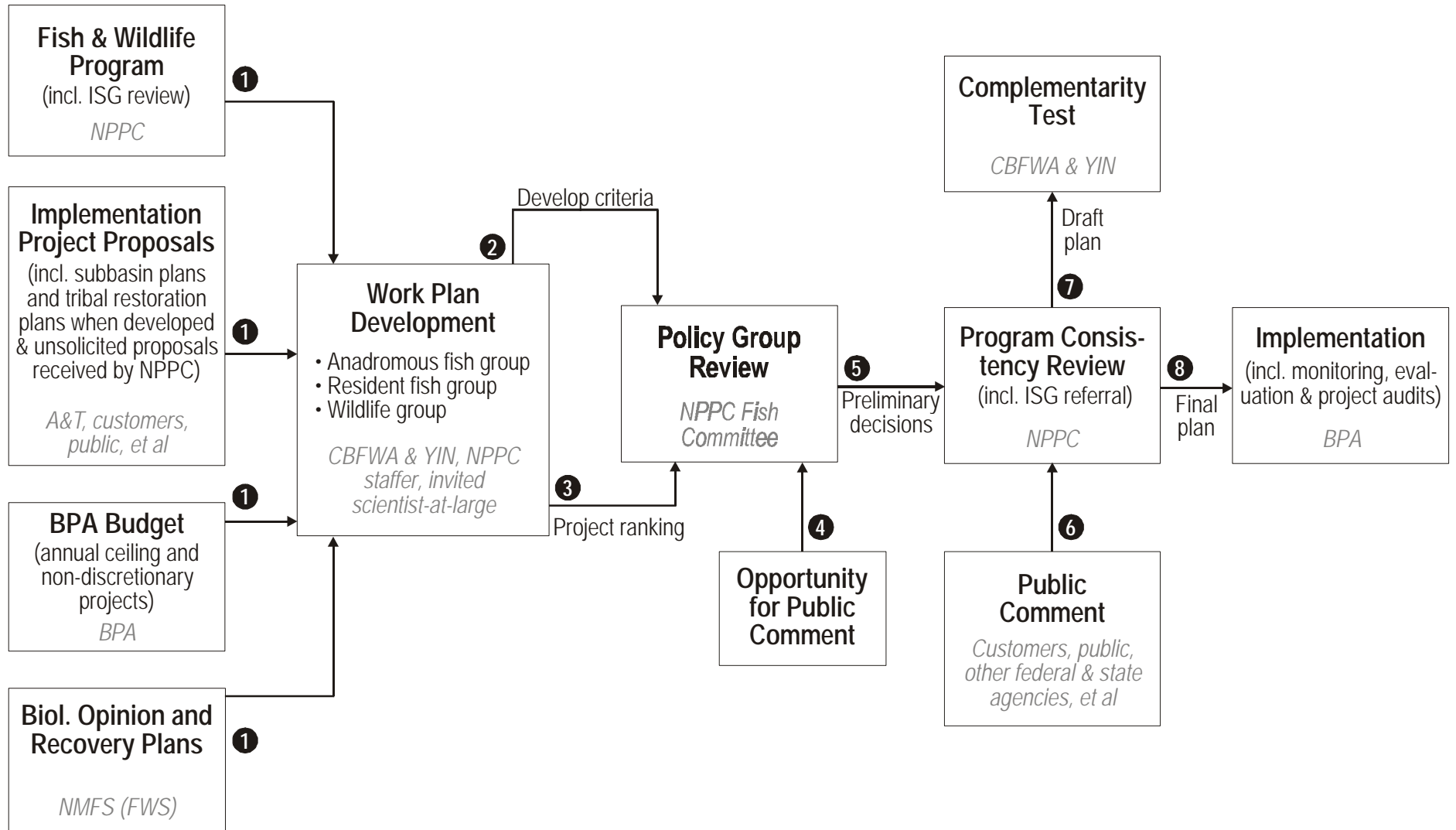
Chronology

The following chronology shows timing of the steps in the workplan development process.

Process	Period
NPPC endorses interim process for FY 1996.....	March
Members' meeting endorses NPPC process.....	March 22
Send out Project Summary Sheets for review.....	March 29
Corrections back to CBFWA.....	May 17-25
Send out request for new projects.....	April 25
Liaison Group meeting to review progress.....	May 2
Liaison Group conference call to choose invited scientists.....	May 12
Resident Fish Committee meets to develop criteria.....	May 16 (Spokane)
Anadromous Ranking Team develops criteria.....	May 16
Send project summaries, new proposal forms to start review.....	May 19
Criteria approved by LG conference call.....	May 19
BPA sets budget level and identifies "non-discretionary" projects.....	May 23
Criteria endorsed by Members in consent letter.....	May 23
Criteria approved by NPPC Fish Four.....	May 24 (Missoula)
Send criteria and more projects to CBFWA committees.....	May 25
CBFWA Committees rank on-going/new projects.....	May 25-June 5
Resident Fish Committee meets.....	May 31-June 1
Anadromous Ranking Team meets.....	June 5
Liaison Group meets to review ranking and starts additional project review and validation.....	June 7
Resident Fish validation team meets.....	June 22
Mainstem Passage validation team meets.....	June 26
Fish Propagation validation team meets.....	June 27
Update NPPC F&W Committee on progress.....	June 27 (Portland)
Coordination/Modeling validation team meets.....	June 28
Habitat/Trib. Passage validation team meets.....	June 29
Resident Fish Committee meets.....	June 28
Liaison Group meets to review draft project ranking material.....	July 11
Update NPPC on progress (draft Wildlife/Res. Fish project lists).....	July 12 (Butte)
Liaison Group meets to develop anadromous project list.....	July 18
Liaison Group meets to complete anadromous project list.....	July 24
NPPC Fish Four Committee review.....	July 25 (Spokane)
Liaison Group meets to complete FY 1996 project list.....	Aug 1
Mail draft FY1996 project list to Members for consent.....	Aug 2
Closure on Members' consent letter.....	Aug 8
Wildlife Group conference call.....	Aug 14
Resident Fish Committee conference call.....	Aug 14
Members' conference call.....	Aug 15
NPPC Fish Four Committee review.....	Aug 16 (Ashland)
Closure on second Members' consent letter.....	Aug 24
NPPC Fish 4 Committee adoption.....	Aug 25
NPPC adoption of the F & W work plan for FY 1996.....	Sept 12 (Twin Falls)
Final Recommendations completed.....	Sept 22
BPA fund projects for FY 1996.....	October 1

Interim Process for Workplan Development

The following figure shows the relationships between procedures in the overall workplan development process. The figure diagrams, from left to right, the input processes and reviews that lead to implementation of the workplan.



Recommended Wildlife Projects

Table 1

Proj #	Title	Sponsor	Status	96 Estimate**	New***
9106100	Tracy Rock Sharp Tail Grouse (funded by 93-058)	WDFW	Ongoing *	0	
9106200	Blue Creek Winter Range (funded by 93-058)	Spokane	Ongoing *	0	
9204700	Peregrine Falcon Reintroduction (funded by 93-058)	NPS	Ongoing *	0	
9204800	Hells Gate Big Game Winter Range (funded by 93-058)	CCT	Ongoing *	0	
9204900	Vancouver Lowlands Wildlife (funded by 93-058)	WDFW	Ongoing *	0	
9206200	Lower Yakima Valley Riparian/Wetlands (funded by 93-058)	YIN	Ongoing *	0	
9305800	Washington Wildlife Coalition Mitigation Agreement	WDFW	Ongoing *	7,545	
9404400	Douglas County Pygmy Rabbit Management	WDFW	Ongoing *	0	
9500800	Umatilla Tribe Wildlife Coordination	CTUIR	Ongoing *	0	
9009200	Conforth Ranch Option	CTUIR	Ongoing	200	
9106000	Pend Oreille Wetlands Wildlife Mitigation Project	Kalispel	Ongoing	123	
9106300	Palisades Mitigation South Fork Snake/Sand Creek	IDFG	Ongoing	1,000	
9107800	Burlington Bottoms-Phase I Wildlife Mitigation	ODFW	Ongoing	75	
9205900	Amazon Basin/Eugene Wetlands-Phase I	ODFW/TNC	Ongoing	575	
9206000	Camas Prairie Wildlife Mitigation-Phase I	IDFG	Ongoing	500	
9206100	Pack River/Clark Fork Wildlife Mitigation	IDFG	Ongoing	500	
9206800	Western Pond Turtle Mitigation-Phase I	ODFW	Ongoing	1,000	
9501900	Burns-Paiute Mitigation Coordinator (Funded Under 9503100)	BPT	Unfunded	0	0
9503100	Future Oregon Wildlife Mitigation	OR Coalition	Unfunded	0	4,000
9503101	Future Washington Wildlife Mitigation	WA Coalition	Unfunded	0	0
9503102	Future Idaho Wildlife Mitigation	ID Coalition	Unfunded	0	0
9503103	Washington Agreement O&M Funding	WA Coalition	Unfunded	0	0
9990073	Fund Implementation Of Wildlife Plan ****	Wildlife Managers	Unfunded	0	2,500
9990074	Pend Oreille Wetland Wildlife Mitigation Expansion	Kalispel	Unfunded	0	200
9990076	Black Canyon Reservoir Wildlife Mitigation	IDFG	Unfunded	0	250
9990078	Palisades Wildlife Mitigation	IDFG/SBT	Unfunded	0	
WILDLIFE TOTAL				11,518	6,950

* Long term legal agreements; those with \$0 are funded from 9305800

** Recommended for funding in FY96 from BPA's F&W budget

*** Not recommended for funding in FY96 from BPA's F&W budget at this time

**** Delayed; needs NPPC approval

Recommended Resident Fish Projects by Priority

Table 2

Proj #	Title	Sponsor	Status	96 Estimate**	New***
8806500	KOOTENAI RIVER FISHERIES INVESTIGATIONS	IDFG, Kootenai	Ongoing *	462	
9401200	KOOTENAI RIVER WHITE STURGEON - M&E	IDFG	Ongoing *	75	
8806400	EXPRMNTL STURGEON HTCH& KOOTENAI WH STURG INVST	Kootenai	Ongoing *	450	
9404900	KOOTENAI AQUATIC ECOSYSTEM AND FISHERY DEVELOPMENT	Kootenai	Ongoing *	175	
9106700	IDAHO WATER RENTAL - RESIDENT F&W IMPACTS	IDFG	Ongoing *	128	
9402900	COLVILLE TRIBAL HATCHERY OPERATION AND MAINTENANCE	CCT	Ongoing *	335	
9104700	SHERMAN CREEK HATCHERY - O&M	WDFW	Ongoing *	180	
9104600	SPOKANE TRIBAL (GALBR SPRGS) HATCHERY - O&M	Spokane	Ongoing *	420	
9101903	HUNGRY HORSE MITIGATION/HABITAT IMPROVEMENTS	MDFWP	Ongoing	260	
9201000	HABITAT IMPRVMT/ENHNMNT - FORT HALL BOTTOMS	SBT	Ongoing	125	
8346700	LIBBY RESERVOIR LEVELS	MDFWP	Ongoing	325	
8446500	TECH ANALYSIS LIBBY	MDFWP	Ongoing	30	
9500400	LIBBY RESERVOIR MITIGATION PLAN	MDFWP	Ongoing	150	
9004400	STRM SURVEY,HTCHRY,HAB IMPROV, MNTR COEUR D	C d'Alene	Ongoing	500	
9001800	HABITAT IMPROVEMENT - LAKE ROOSEVELT	CCT	Ongoing	200	
9500100	KALISPEL TRIBE RESIDENT FISH	Kalispel	Ongoing	795	
9501100	CHIEF JOSEPH KOKANEE ENHANCEMENT PROJECT	CCT	Ongoing	500	
9404300	LAKE ROOSEVELT DATA COLLECTION SYS OP REVIEW (SOR)	Spokane	Ongoing	150	
9500600	COMPREHENSIVE MSTR PLAN/SHO-BANNOCK HATCHERY	SBT, SPT	Ongoing	1,400	
8806300	MONITOR & EVAL IMPROV PRJCTS - LK ROOSEVELT	Spokane	Ongoing	320	
9101901	HUNGRY HORSE MITIGATION/FLATHEAD LAKE - MONITORING	CSKT	Ongoing	40	
9101900	HUNGRY HORSE FISHERIES MITIGATION	USFWS	Ongoing	87	
9500900	LAKE ROOSEVELT RAINBOW TROUT NET PENS	LRDA	Ongoing	115	
9501600	(PHASE IV) GENETIC INVENTORY WESTSLOPE TROUT	NPT	Ongoing	164	
8605000	EVALUATE STURGEON PHYSICAL HABITAT REQUIREMENTS	ODFW	Ongoing	2,200	
9405400	BULL TROUT LIFE HISTORY PROJECT - NE OREGON	CTWS	Ongoing	250	
9101904	HUNGRY HORSE MITIGATION - KOKANEE AT CRESTON HTCH	USFWS	Ongoing	600	
8740700	DWORSHAK IMPACTS ASSMNT/RAINBOW/SMALLMOUTH BASS E*	NPT	Ongoing	181	
9405300	BULL TROUT ASSESSMENT - WILLAMETTE/MCKENZIE	ODFW	Ongoing	50	
8709900	DWORSHAK DAM IMPACTS ASSESSMENT	IDFG	Ongoing	175	
9501500	BILLY SHAW RES DEV	SPT	Ongoing	485	
8815600	DUCK VALLEY RESIDENT FISH PROJECT	SPT	Ongoing	100	
9400400	CABINET GORGE HATCHERY IMPROVEMENTS	IDFG	Ongoing	15	
9501300	(PHASE IV) NEZ PERCE TROUT PONDS	NPT	Ongoing	158	
9990058	LAKE ROOSEVELT MONITORING PROJECT	Spokane	Unfunded		400
9990053	LAKE CREEK LAND ACQUISITION	C d'Alene	Unfunded		230
9502500	FLATHEAD RIVER INSTREAM FLOW STUDY	MDFWP	Unfunded		0
9501200	(PHASE IV) BIOLOGICAL RULE CURVES HH/LIBBY	CSKT	Unfunded		100
9502700	LK ROOSEVELT STURGEON	Spokane	Unfunded		264
9990080	CONSUMPTIVE STURGEON FISHERY-HELLS CANYON/OXBOW RE	NPT	Unfunded		250

* Projects with long-term legal agreements or Endangered Species Act (ESA) mandated

** Recommended for funding in FY96 from BPA's F&W budget

*** Not recommended for funding in FY96 from BPA's F&W budget at this time

Recommended Resident Fish Projects by Priority

Table 2

Proj #	Title	Sponsor	Status	96 Estimate**	New***
9990060	JOINT RESIDENT FISH STOCK STATUS ASSESSMENT	CCT, Kalispel, Spokane,	Unfunded		375
9990064	NPPC RF PROJECTS		Unfunded		
9990067	SPOKANE TRIBAL HATCHERY WELL IMPROVEMENT	Spokane	Unfunded		250
9501400	(PHASE IV) RESIDENT FISH LOSS ASSESSMENT	IDFG, SBT, NPT	Unfunded		157
9502600	FLATHEAD MODEL WATERSHED	CSKT, MDFWP	Unfunded		0
9990057	GENETIC ANALYSIS OF NATIVE SNAKE RIVER SALMONIDS	IDFG, ODFW, SBT, SP	Unfunded		100
9990068	LAKE ROOSEVELT KOKANEE NET PENS	Spokane/WDFW	Unfunded		198
9990066	TROUT PONDS	C d'Alene	Unfunded		25
9990065	PHALON LAKE TRAP IMPROVEMENTS AND O&M (WDFW #92-2/00)	WDFW	Unfunded		60
9990062	LAKE ROOSEVELT VEGETATIVE PLANTING FEASIBILITY STUDY (WDFW	Unfunded		88
9990061	BULL TROUT STATUS IN BONNEVILLE RESERVOIR TRIBUTARIES	WDFW	Unfunded		150
9404700	LAKE PEND OREILLE KOKANEE	IDFG	Unfunded		370
9990055	PEND OREILLE LAKE SYSTEM BULL TROUT STUDY	IDFG	Unfunded		100
9990059	YELLOW PERCH AQUACULTURE FACILITY	Kalispel	Unfunded		
9990054	SNAKE RIVER NATIVE SALMONID ASSESSMENT	IDFG, ODFW, SBT, SP	Unfunded		100
9990063	FORD HATCHERY IMPROVEMENTS AND O&M (WDFW #92-2/0055)	WDFW	Unfunded		200
9502800	ASSESSMENT OF FISHERY IMPR. MOSES LAKE	WDFW	Unfunded		220
RESIDENT FISH TOTAL				11,600	3,637

* Projects with long-term legal agreements or Endangered Species Act (ESA) mandated

** Recommended for funding in FY96 from BPA's F&W budget

*** Not recommended for funding in FY96 from BPA's F&W budget at this time

Recommended Anadromous Fish Projects by Priority

Table 3

Proj #	Title	Sponsor	96 Estimate*	ESA**	Other***
9403300	FISH PASSAGE CENTER	PSMFC	865		
8332300	SMOLT CONDITION & ARRIVAL TIMING AT LWR GRANITE	IDFG	318		
8401400	SMOLT MONITORING AT FEDERAL DAMS	NMFS	655		
8201300	CODED-WIRE TAG RECOVERY	PSMFC	1,161		
8402500	WALLOWA CREEK, GRANDE RONDE RIVER, OREGON (ODFW)	ODFW	161		
9401500	IDAHO FISH SCREENING IMPROVEMENT	IDFG	701		
9990071	ANADROMOUS FISH PASSAGE IMPROVEMENT AT WALLA WALLA IRRIG/	CTUIR	100		
9990069	JUVENILE SCREENS AND SMOLT TRAPS AT WALLA WALLA RIVER	CTUIR	90		
9401700	IDAHO MODEL WATERSHED HABITAT PROJECTS	Model Waters	23		
9200900	YAKIMA SCREENS - PHASE II - O & M	WDFW	75		
9402700	GRANDE RONDE MODEL WATERSHED HABITAT PROJECTS	GRMW	260		650
8402300	CAMAS CREEK, IDAHO	USFS	7		
9202603	MODEL WATERSHED STUDIES - LEMHI RIVER BASIN	ID Soil	141		
8335000	NEZ PERCE TRIBAL HATCHERY	NPT	3,340		
9105700	YAKIMA PHASE 2 SCREEN FABRICATION	WDFW	300		
9107500	YAKIMA PHASE II SCREENS - CONSTRUCTION	USBR	1,547		
8402100	MAINSTEM, MIDDLE FORK, JOHN DAY RIVER	ODFW	297		
8712700	SMOLT MONITORING BY NON-FEDERAL ENTITIES	PSMFC	1,237		
8906200	COLUMBIA BASIN FISH AND WILDLIFE AUTHORITY	CBFWF	395		
9406500	PATAHA CREEK MODEL WATERSHED PROJECT	SWCD	19		
8343500	UMATILLA HATCHERY SATELLITE FACILITIES O&M	CTUIR	334		
8812000	YAKIMA NATURAL PRODUCTION & ENHANCEMENT PROGRAM	YIN	1,403		
9202601	GRAND RONDE MODEL WATERSHED CHARTER DEVELOPMENT	PNRS	280		
8710002	UMATILLA HABITAT IMPROVEMENT (ODFW)	ODFW	190		
8810801	COORDINATED INFORMATION SYSTEM (CIS)	PSMFC	792		
8811500	YAKIMA HATCHERY - CONSTRUCTION	CH2M H	4,114		
9202800	REGIONAL FISH SCREENING	CBFWF	164		
8805303	HOOD RIVER PRODUCTION PROGRAM	CTWS, ODF	374		
9008000	COLUMBIA BASIN PIT-TAG INFORMATION SYSTEM (PTAGIS)	PSMFC	983		
8403300	UMATILLA HATCHERY	ODFW	908		
8710001	UMATILLA RIVER BASIN ANADROMOUS FISH HABITAT ENHANCEMENT	CTUIR	293		
8607500	LITTLE NACHES PASSAGE	USFS	2		
9007700	SQUAWFISH MANAGEMENT	PSMFC	3,843		
9202602	EASTERN WA MODEL WATERSHED DEVELOPMENT PLN PHASE	WS Cons Cm	115		
8506200	PASSAGE IMPROVEMENT EVALUATION	Battelle	281		
8343600	UMATILLA PASSAGE O&M	USBR	281		
8902700	POWER/REPAY O&M FOR USBR CPR PUMPING PROJ	PPL	271		
9107100	SNAKE RIVER SOCKEYE SALMON HABITAT (ESA)	SBT	408		
9303600	HAYSFORK GLORYHOLE	NPT	30		
9403900	WALLOWA BASIN PROJECT PLANNING	NPT	50		

* Recommended for funding in FY96 from BPA's F&W budget

** Recommended for funding in FY96 from BPA's ESA budget

*** Not recommended for funding in FY96 from BPA's F&W budget at this time

h:\w\lawp96\pt.mdb -> rptRankLine

Recommended Anadromous Fish Projects by Priority

Table 3

Proj #	Title	Sponsor	96 Estimate*	ESA**	Other***
9101400	UMATILLA SATELLITES - PLNG,SITING,DESIGN,CNSTR	Watson	3,016		
9303800	N FK JOHN DAY ANADR FISH HABITAT ENHCMNT - USFS	USFS	53		
9402600	PACIFIC LAMPREY RESEARCH AND RESTORATION PROJECT	CTUIR	335		
8403306	UMATILLA HATCHERY - WATER SUPPLY	Watson	468		
8909800	EVAL OF SUMMLMTG SALMON/CLRWTR RV W/ HATCH ST	IDFG	791		
9304000	FIFTEENMILE CREEK HABITAT IMPROVEMENT	ODFW	229		
9404200	TROUT CREEK OPERATION & MAINTENANCE	ODFW	187		
9304500	BUCK HOLLOW WATERSHED ENHANCEMENT (ODFW)	ODFW	53		
8906500	ANN CD WIRE TAG PROG-MISSING PROD OR/WA (USFWS) PLUS FISH M.	USFWS	249		
9405000	SALMON RIVER HABITAT O&M	SBT	253		
9107200	REDFISH LAKE SOCKEYE REARING AND TRAPPING (ESA)	IDFG	612		
8802200	UMATILLA RIVER BASIN TRAP AND HAUL PROGRAM	CTUIR	382		
9302900	SURVIVAL EST FOR PASSAGE THROUGH DAMS/RESERVOIRS	NMFS	748		
8902401	EVAL UMATILLA BASIN PRJ - 3-MILE/WEID CANAL SCR	ODFW	240		
9102800	PIT TAGGING WILD CHINOOK	NMFS	313		
8740100	TRAVEL TIME AND SURVIVAL SMOLT PHYSIOLOGY	NBS	465	285	
9000501	UMATILLA BASIN NATURAL PRODUCTION M&E	CTUIR	615		
8402400	MARSH / ELK / UPPER SALMON RIVER, IDAHO	USFS	47		
8331900	NEW FISH TAG SYSTEM	NMFS	430		
9403400	UPPER CLEARWATER - ASSESSING SUMMER/FALL CHINOOK	NPT	226		
9204000	REDFISH LAKE SOCKEYE BROODSTOCK REARING/RESEARCH	NMFS	429		
8909600	GENETIC MONT/EVAL PROG FOR SALM/STLHD	NMFS	232		
8805304	NE ORE OUTPLANTING FACILITIES MASTER PLAN - ODFW	ODFW	394		
9000500	UMATILLA HATCHERY - MONITORING/EVAL PRJCTS	ODFW	544		
9201400	YAKIMA HABITAT ASSESSMENT AND IMPROVEMENT	YIN	234		
8909802	SALMON SUPPLE STUDIES IN ID RV - NEZ PERCE TRB	NPT	145		
9102900	LIFE HISTORY OF FALL CHIN IN COL R (ESA)	NBS	1,053	450	
8612400	INSP SERV FOR LITTLE FALL CREEK PASS RE:86-090	ODFW	4		
8909801	SALM SUPPLE STUDIES IN ID RV - USFWS	USFWS	91		
9506300	YAKIMA/KLICKITAT MONITORING AND EVALUATION PROGRAM	YIN	1,449		
9305600	ASSESSMENT OF CAPTIVE SALMONID BROODSTOCK TECH	NMFS	979		
8908200	YAKIMA HATCHERY EXPERIMENTAL DESIGN - WDF	WDFW	600		
8805301	NE ORE OUTPLANTING FACILITIES MASTER PLAN - NEZ PERCE	NPT	400		
9301200	EVALUATION OF CARRYING CAPACITY	Battelle	94		
9506200	YAKIMA/KLICKITAT FISHERIES PROJ ADAPTIVE MGMT	YIN	748		
9306000	COLUMBIA RIVER TERMINAL FISHERIES RESEARCH PROJECT	ODFW	786		
9204300	INTEGRATED HATCHERY OPERATIONS TEAM (EIP)	PSMFC	465		
8906900	ANN CD WIRE TAG PROG-MISSING PROD OR HTC (ODFW)	ODFW	125		
8910700	EPIDEMIOLOGICAL SURVIVAL METHOD	Univ/WA	154		
9202200	WILD SMOLT BEHAVIOR/PHYSIOLOGY (ESA)	NMFS	346		

* Recommended for funding in FY96 from BPA's F&W budget

** Recommended for funding in FY96 from BPA's ESA budget

*** Not recommended for funding in FY96 from BPA's F&W budget at this time

h:\w\lawp96\pt.mdb -> rptRankLine

Recommended Anadromous Fish Projects by Priority

Table 3

Proj #	Title	Sponsor	96 Estimate*	ESA**	Other***
9204100	FISH PASSAGE EVALUATIONS	COE	241		
8909803	SALMON SUPPLE IN ID RIVERS - SHOSHONE-BANNOCK TRB	SBT	121		
9105500	SUPPLEMENTATION FISH QUALITY (NATURES)	NMFS	281		
9107300	IDAHO NATURAL PRODUCTION MONITORING/EVAL 83-7(ESA)	IDFG	650		
9006900	YAKIMA HATCHERY - FINAL DESIGN	CH2M H	468		
9500200	IHOT HATCHERY AUDITS	Consultant	281		
9005200	PERF/STOCK PROD IMPACTS OF HATCHERY SUPPL	NBS	300		
9306700	COMPREHENSIVE ANALYSIS OF PRODUCTION (CEA)	USFWS	94		
8200300	PREDATION/DEVELOPMENT OF PREY PROTECTION	NBS	404		
9405900	BPA ENVIRONMENTAL EDUCATION TRAINING/YAKIMA RIVER BASIN	ESD 105	90		
9007800	SQUAWFISH MANAGEMENT (SUPPORT)	NBS	400		
8910500	YAKIMA - SPECIES INTERACTION STUDY	WDFW	300		
9307000	GRAND RONDE,IMNAHA,JOHN DAY RVR TELEMETRY TRACKING	PNRS	65		
9306600	OREGON FISH SCREENS PROJECT	ODFW	250		
8906600	ANN CD WIRE TAG PROG-MISSING PROD WA HTCH (WDF)	WDFW	294		
9404600	ECOSYSTEM MANAGEMENT	Mobrand	183		
8402200	MAINSTEM AND UPPER JOHN DAY RIVER	USFS	19		
8907201	SCIENTIFIC REVIEW GROUP SUPPORT	CBFWF	450		
9301100	REGIONAL HABITAT EDUCATION SUPPORT	BPA	12		
8816000	BIOENGR EVAL OF RETROFITTED OXY SUPPLEMENTATION	ODFW	98		
8816300	EFFECTS OF CODED WIRE TAGS ON SPRING CHINOOK	WDFW	174		
9206500	F&W PUBLIC EDUCATION PROJECT	Consultant	6		
9503300	O&M YAKIMA R BASIN FISH PROTECTION, MIT & ENHANCE	YIN	12		
8903000	EVAL OF PRE-REL TEMP ACCLIMATION AT GRAND WATER HTCH	WDFW	34		
9503200	YAKIMA/NELSON SPRINGS FACILITIES JANITORIAL SERVIC	Consultant	7		
9300300	SHERMAN PASS SCENIC BYWAY VISITORS CENTER	USFS	5		
9999999	LAW ENFORCEMENT GENERAL	Various	3,317		
9104100	IDAHO WATER RENTAL - FLOWS	ID Power			1,000
9990012	SALMON RIVER FISH PASSAGE/IRRIGATION IMPROVEMENT	SBT/FSOC			1,300
9401800	WASHINGTON MODEL WATERSHED HABITAT PROJECTS	Cons Districts			250
9990010	COLUMBIA RIVER BASIN TRIBUTARY ADULT FISH PASSAGE	FSOC			500
9305500	WATER PURCHASE ACQUISITION/LEASE FEE/PURCHASE OPT	Skyline Farm		3,600	
9990009	UMATILLA RIVER ADULT FISH PASSAGE AT FEED CANAL DAM	FSOC			250
9504100	COST SHARE 500 KAF UPPER SNAKE	New Project		2,000	
9990005	MAINSTEM COLUMBIA/SNAKE RIVER VIDEO FISH COUNTING	CRITFC			198
9990006	FISH PASSAGE AND SCREENING FOR TOPPENISH CREEK DIVERSION	USFWS			295
9990070	RIPARIAN AND FISH HABITAT ENHANCEMENT - WALLA WALLA BASIN	CTUIR			150
8810803	NORTHWEST ENVIRONMENTAL DATABASE	PSMFC			1,200
9990031	PORTABLE CHINOOK SALMON ADULT COLLECTION/HOLDING AND JUVE	NPT			411
9403100	ANALYTICAL COORDINATION WORKGROUP - PATH	NMFS		793	

* Recommended for funding in FY96 from BPA's F&W budget

** Recommended for funding in FY96 from BPA's ESA budget

*** Not recommended for funding in FY96 from BPA's F&W budget at this time

h:\w\lawp96\pt.mdb -> rptRankLine

Recommended Anadromous Fish Projects by Priority

Table 3

Proj #	Title	Sponsor	96 Estimate*	ESA**	Other***
9990027	SALMON CORPS	DOE, CRITFC			300
9405600	WARM SPRINGS HABITAT ENHANCEMENT	CTWS			0
9990018	OMAK CREEK ANADROMOUS FISH REINTRODUCTION	CCT			75
9990019	LIVESTOCK MANAGEMENT PROJECT	CTWS			61
9504900	EMERGENCY SUPPLEMENTATION ACTIONS	New Project			2,000
9505200	EMERGENCY SUPPLEMENTATION FACILITIES	New Project			5,000
9502100	OKANOGAN WATERSHED PLANNING	CCT			125
9990032	SUMMER CHINOOK SALMON REARING FACILITIES IN JOHNSON CREEK	NPT			400
9504200	INCREASED PREDATION MEASURES	New Project		0	
9990033	SELWAY RIVER CHINOOK SALMON RESTORATION	NPT			417
9505100	SUBBASIN PRODUCTION PROJECTS	New Project			5,000
9990002	MONITOR SEDIMENT LEVELS IN GRANDE RONDE/JOHN DAY RIVERS	CRITFC			50
9990037	CLEARWATER BASIN SUBWATERSHED PRIORITIZATION	ID Soil			50
9990034	COMPREHENSIVE ANADROMOUS SALMONID SYSTEM MONITORING	NPT			300
9990028	FINAL PLANNING AND IMPLEMENTATION OF HIGH PRIORITY SUPPLEME	SBT			150
9990014	DEVELOP SUBREGIONAL PLANS	CBFWF			400
9990030	CRITICAL STOCK CHINOOK SALMON GAMETE PRESERVATION	NPT			211
9401600	SUPPLEMENTATION PROJECTS	New Project			350
9104000	BONNEVILLE DAM JUVENILE FISH SAMPLING FACILITY	COE		570	
9300800	ALLOWABLE GAS SUPERSATURATION AT DAMS	Watson		0	
9105100	ANALYSIS OF REL OF RIVERFLOW TO TRAVEL TIME (ESA)	Univ/WA		0	
9990003	TERMINAL AREA ESCAPEMENT ESTIMATION	CRITFC			300
9304400	EDF WATER ACQUISITION PILOT PROJECT	EDF		125	
9304300	FLOW VOLUME PROVISIONS/SUPPORT	Various		75	
9990004	JOHN DAY RIVER WATER TEMPERATURE DATABASE	CRITFC			114
8910800	COLUMBIA RIVER SALMON PASSAGE MODEL	Univ/WA		900	
9106400	PIT TAG FACILITIES	COE			0
8805302	NE ORE OUTPLANTING FACILITIES MASTER PLAN - CTUIR	CTUIR	0		
9203200	LIFE CYCLE MODEL DEVEL/APPLIC TO SSP IN SNAKE RV	USFS		50	
9990017	UPDATE SUBBASIN PLANS	CBFWF			200
9990001	WILLAMETTE FALLS FISHWAY RESTORATION AND MODERNIZATION	ODFW			2,125
9990008	M & E OF SNAKE RIVER FALL CHINOOK SUPPLEMENTATION UPSTREAM	USFWS, WD			65
8741302	ANALYZE HISTORIC DATA FOR JUVENILE/ADULT PROD	Univ/WA	0		
9009300	GENETIC ANALYSES OF ONCORHYNCHUS NERKA (ESA)	Univ/ID		0	
9303701	TECHNICAL ASSISTANCE WITH THE LIFE CYCLE MODEL	Paulsen		53	
9990035	ASSISTANCE FOR SHOSHONE-BANNOCK TRIBES' SNAKE RIVER POLICY	SBT			100
9990011	FERC/FEDERAL TRIBUTARY PROJECT COORDINATION	CBFWF			100
9990029	PANTHER CREEK TRAP AND HAUL OPERATION	SBT			900
9207100	ASSESS TECH TO IMPROVE MEASRMNT CAPABILITIES (M&E)	Battelle	0		
9301900	DESIGN/CONSTRUCT POWERDALE DAM FAC (ODFW)	ODFW	0		

* Recommended for funding in FY96 from BPA's F&W budget

** Recommended for funding in FY96 from BPA's ESA budget

*** Not recommended for funding in FY96 from BPA's F&W budget at this time

h:\w\lawp96\pt.mdb -> rptRankLine

11

Recommended Anadromous Fish Projects by Priority

Table 3

Proj #	Title	Sponsor	96 Estimate*	ESA**	Other***
9301400	NEW AMENDED PROGRAM PHASE III (CAPITAL)	BPA			1,000
9990021	SUPPLEMENTATION PLANS FOR UNLISTED SALMON				
9990024	FEASIBILITY OF FALL CHINOOK ABOVE HELLS CANYON				
9990023	STEELHEAD ACCLIMATION PONDS				
9403000	RASP IN GRAND RONDE MODEL WATERSHED	Mobrand	0		
9301300	TECH ASSISTANCE/REVIEW	SP Cramer	0		
9207300	DEVELOPMENT OF LASER-MARKING SALMONIDS	WDFW	0	320	
9106600	ICE HARBOR/LOWER GRANITE TRAPPING (CHF) (ESA)				
9504800	EVALUATE HANFORD - K BASIN PRODUCTION	New Project			500
9990015	EVALUATION OF PROGRAM PROGRESS/ANNUAL RESULTS SYMPOSIUM	CBFWF			250
9504700	IRRIGATION DIVERSION SCREENING (FED. LANDS)	New Project	0	3,000	
9990020	REDUCE SHAD IMPACTS ABOVE BONNEVILLE				
9402300	SELECTIVE HARVEST	Consultant			500
8810800	SYSTEM MONITORING AND EVALUATION PROGRAM (SMEP)				2,000
9504300	TRANSPORTATION EVALUATION	New Project			
9401300	ANNUAL PROJECTS REVIEW	Various			10
9504600	EXPENSES FOR UPDATING SUBBASIN PLANS	New Project			100
8611800	FISH AND WILDLIFE PROGRAM ASSISTANCE EFFORT	Battelle			0
9990026	STUDY IN/OUT BREEDING DEPRESSION				
9504500	COST SHARE IMPROVED HARVEST ESC. MODEL	New Project			100
9501000	F&W NEWSLETTER DEVELOPMENT GRANT	Noe	0		
8812400	F & W PROGRAM INTERNAL SUPPORT ACTIVITIES	BPA	0		
9990025	STUDY GENETICS OF LIFE HISTORY VARIATION				
9203800	WATERSHED EDUCATION INTERACTIVE DISPLAY FOR OMSI	New Project	0		
9006100	FUNGAL INFECTION: SPRING/SUMMER CHINOOK SALMON		0		
9504400	COST SHARE BIOLOGICAL ANALYSIS CENTER	New Project			250
ANADROMOUS TOTAL			54,341	12,221	29,707

* Recommended for funding in FY96 from BPA's F&W budget

** Recommended for funding in FY96 from BPA's ESA budget

*** Not recommended for funding in FY96 from BPA's F&W budget at this time

Recommendations

1. BPA should fund the projects at the proposed levels recommended in the attached tables from the FY 1996 budget, subject to the other recommendations included here.
2. BPA should continue to fund the Northwest Environmental Data Base (project #8810803) from funds outside the \$83 million fish and wildlife budget in FY 1996. The fish and wildlife managers will fund it from the Program budget in FY 1997.
3. The NPPC should adopt several needed changes in the FY 1996 process before it is applied to the FY 1997 projects:
 - a. Begin sooner - The project review and budget priority-setting take at least one year to accomplish. The process should begin by October 1 each year;
 - b. Collect better project information - Meaningful project evaluation requires complete, up-to-date information that addresses the evaluation criteria, scheduling and cost considerations;
 - c. Review budget emphasis - Budget amounts can define the importance of completing the different parts of the program and the region should examine these priorities;
 - d. Improve the criteria - The NPPC and CBFWA should lead the improvement of project evaluation criteria to increase clarity and effectiveness and reduce bias;
 - e. Conduct additional technical review and coordination - Technical peers should review projects relative to the criteria and improve coordination of efforts and budgets and reduce duplication and lower priority work; and,
 - f. Monitor implementation - NPPC and CBFWA should frequently monitor project implementation for delays, problems, and changes in scope or budget and the results reported to the NPPC at least quarterly.
4. CBFWA Members and the NPPC should insist that BPA budget sufficient funds to mitigate and recover fish and wildlife resources as required under the Northwest Electric Power Planning and Conservation Act. Estimates of out-year budget needs are considerably larger than the currently budgeted amount. As in previous years, this priority-setting effort demonstrates that the recent BPA budget levels of \$72 to \$78 million are inadequate to fully implement the NPPC Fish and Wildlife Program in a timely fashion.

APPENDICES

Wildlife Projects Listed by Project Number

Appendix A.1

Proj #	Title	Sponsor	96 Estimate*	New**
9009200	Conforth Ranch Option	CTUIR	200	
9106000	Pend Oreille Wetlands Wildlife Mitigation Project	Kalispel	123	
9106100	Tracy Rock Sharp Tail Grouse (funded by 93-058)	WDFW	0	
9106200	Blue Creek Winter Range (funded by 93-058)	Spokane	0	
9106300	Palisades Mitigation South Fork Snake/Sand Creek	IDFG	1,000	
9107800	Burlington Bottoms-Phase I Wildlife Mitigation	ODFW	75	
9204700	Peregrine Falcon Reintroduction (funded by 93-058)	NPS	0	
9204800	Hells Gate Big Game Winter Range (funded by 93-058)	CCT	0	
9204900	Vancouver Lowlands Wildlife (funded by 93-058)	WDFW	0	
9205900	Amazon Basin/Eugene Wetlands-Phase I	ODFW/TNC	575	
9206000	Camas Prairie Wildlife Mitigation-Phase I	IDFG	500	
9206100	Pack River/Clark Fork Wildlife Mitigation	IDFG	500	
9206200	Lower Yakima Valley Riparian/Wetlands (funded by 93-058)	YIN	0	
9206800	Western Pond Turtle Mitigation-Phase I	ODFW	1,000	
9305800	Washington Wildlife Coalition Mitigation Agreement	WDFW	7,545	
9404400	Douglas County Pygmy Rabbit Management	WDFW	0	
9500800	Umatilla Tribe Wildlife Coordination	CTUIR	0	
9501900	Burns-Paiute Mitigation Coordinator (Funded Under 9503100)	BPT	0	0
9503100	Future Oregon Wildlife Mitigation	OR Coalition	0	4,000
9503101	Future Washington Wildlife Mitigation	WA Coalition	0	0
9503102	Future Idaho Wildlife Mitigation	ID Coalition	0	0
9503103	Washington Agreement O&M Funding	WA Coalition	0	0
9990073	Fund Implementation Of Wildlife Plan	Wildlife Managers	0	2,500
9990074	Pend Oreille Wetland Wildlife Mitigation Expansion	Kalispel	0	200
9990076	Black Canyon Reservoir Wildlife Mitigation	IDFG	0	250
9990078	Palisades Wildlife Mitigation	IDFG/SBT	0	
WILDLIFE TOTAL			11,518	6,950

* Recommended for funding in FY96 from BPA's F&W budget

** Not recommended for funding in FY96 from BPA's F&W budget at this time

Wildlife Projects Listed by Location

Appendix A.2

Proj #	Title	Location	96 Estimate*	New**
9106100	Tracy Rock Sharp Tail Grouse (funded by 93-058)	Above Chief Joseph Dam	0	
9106200	Blue Creek Winter Range (funded by 93-058)	Above Chief Joseph Dam	0	
9204700	Peregrine Falcon Reintroduction (funded by 93-058)	Above Chief Joseph Dam	0	
9204800	Hells Gate Big Game Winter Range (funded by 93-058)	Above Chief Joseph Dam	0	
9404400	Douglas County Pygmy Rabbit Management	Above Chief Joseph Dam	0	
		Subtotal	0	
9106300	Palisades Mitigation South Fork Snake/Sand Creek	Above Hells Canyon Dam	1,000	
9206000	Camas Prairie Wildlife Mitigation-Phase I	Above Hells Canyon Dam	500	
9501900	Burns-Paiute Mitigation Coordinator (Funded Under 9503100)	Above Hells Canyon Dam	0	0
9990076	Black Canyon Reservoir Wildlife Mitigation	Above Hells Canyon Dam	0	250
9990078	Palisades Wildlife Mitigation	Above Hells Canyon Dam	0	
		Subtotal	1,500	250
9990073	Fund Implementation Of Wildlife Plan	Columbia River Basin	0	2,500
		Subtotal	0	2,500
9107800	Burlington Bottoms-Phase I Wildlife Mitigation	Lower Columbia	75	
9204900	Vancouver Lowlands Wildlife (funded by 93-058)	Lower Columbia	0	
		Subtotal	75	
9503100	Future Oregon Wildlife Mitigation	Oregon	0	4,000
9503101	Future Washington Wildlife Mitigation	Oregon	0	0
9503102	Future Idaho Wildlife Mitigation	Oregon	0	0
9503103	Washington Agreement O&M Funding	Oregon	0	0
		Subtotal	0	4,000
9106000	Pend Oreille Wetlands Wildlife Mitigation Project	Pend Oreille	123	
9206100	Pack River/Clark Fork Wildlife Mitigation	Pend Oreille	500	
9990074	Pend Oreille Wetland Wildlife Mitigation Expansion	Pend Oreille	0	200
		Subtotal	623	200
9009200	Conforth Ranch Option	Umatilla/Walla Walla	200	
9500800	Umatilla Tribe Wildlife Coordination	Umatilla/Walla Walla	0	
		Subtotal	200	
9305800	Washington Wildlife Coalition Mitigation Agreement	Washington	7,545	
		Subtotal	7,545	
9205900	Amazon Basin/Eugene Wetlands-Phase I	Willamette	575	
9206800	Western Pond Turtle Mitigation-Phase I	Willamette	1,000	
		Subtotal	1,575	
9206200	Lower Yakima Valley Riparian/Wetlands (funded by 93-058)	Yakima	0	
		Subtotal	0	
		WILDLIFE TOTAL	11,518	6,950

* Recommended for funding in FY96 from BPA's F&W budget

** Not recommended for funding in FY96 from BPA's F&W budget at this time

Wildlife Projects Listed by Sponsor

Appendix A.3

Proj #	Title	Sponsor	% Estimate*	New**
9501900	Burns-Paiute Mitigation Coordinator (Funded Under 9503100)	BPT	0	0
		Subtotal	0	0
9204800	Hells Gate Big Game Winter Range (funded by 93-058)	CCT	0	
		Subtotal	0	
9009200	Conforth Ranch Option	CTUIR	200	
9500800	Umatilla Tribe Wildlife Coordination	CTUIR	0	
		Subtotal	200	
9503102	Future Idaho Wildlife Mitigation	ID Coalition	0	0
		Subtotal	0	0
9106300	Palisades Mitigation South Fork Snake/Sand Creek	IDFG	1,000	
9206000	Camas Prairie Wildlife Mitigation-Phase I	IDFG	500	
9206100	Pack River/Clark Fork Wildlife Mitigation	IDFG	500	
9990076	Black Canyon Reservoir Wildlife Mitigation	IDFG	0	250
		Subtotal	2,000	250
9990078	Palisades Wildlife Mitigation	IDFG/SBT	0	
		Subtotal	0	
9106000	Pend Oreille Wetlands Wildlife Mitigation Project	Kalispel	123	
9990074	Pend Oreille Wetland Wildlife Mitigation Expansion	Kalispel	0	200
		Subtotal	123	200
9204700	Peregrine Falcon Reintroduction (funded by 93-058)	NPS	0	
		Subtotal	0	
9107800	Burlington Bottoms-Phase I Wildlife Mitigation	ODFW	75	
9206800	Western Pond Turtle Mitigation-Phase I	ODFW	1,000	
		Subtotal	1,075	
9205900	Amazon Basin/Eugene Wetlands-Phase I	ODFW/TNC	575	
		Subtotal	575	
9503100	Future Oregon Wildlife Mitigation	OR Coalition	0	4,000
		Subtotal	0	4,000
9106200	Blue Creek Winter Range (funded by 93-058)	Spokane	0	
		Subtotal	0	
9503101	Future Washington Wildlife Mitigation	WA Coalition	0	0
9503103	Washington Agreement O&M Funding	WA Coalition	0	0
		Subtotal	0	0
9106100	Tracy Rock Sharp Tail Grouse (funded by 93-058)	WDFW	0	
9204900	Vancouver Lowlands Wildlife (funded by 93-058)	WDFW	0	
9305800	Washington Wildlife Coalition Mitigation Agreement	WDFW	7,545	
9404400	Douglas County Pygmy Rabbit Management	WDFW	0	
		Subtotal	7,545	

* Recommended for funding in FY96 from BPA's F&W budget

** Not recommended for funding in FY96 from BPA's F&W budget at this time

Wildlife Projects Listed by Sponsor**Appendix A.3**

Proj #	Title	Sponsor	96 Estimate*	New**
9990073	Fund Implementation Of Wildlife Plan	Wildlife Managers	0	2,500
		Subtotal	0	2,500
9206200	Lower Yakima Valley Riparian/Wetlands (funded by 93-058)	YIN	0	
		Subtotal	0	
		WILDLIFE TOTAL	11,518	6,950

* Recommended for funding in FY96 from BPA's F&W budget

** Not recommended for funding in FY96 from BPA's F&W budget at this time

Resident Fish Projects Listed by Project Number

Appendix B.1

Proj #	Title	Sponsor	96 Estimate*	New**
8346700	LIBBY RESERVOIR LEVELS	MDFWP	325	
8446500	TECH ANALYSIS LIBBY	MDFWP	30	
8605000	EVALUATE STURGEON PHYSICAL HABITAT REQUIREMENTS	ODFW	2,200	
8709900	DWORSHAK DAM IMPACTS ASSESSMENT	IDFG	175	
8740700	DWORSHAK IMPACTS ASSMNT/RAINBOW/SMALLMOUTH BASS E*	NPT	181	
8806300	MONITOR & EVAL IMPROV PRJCTS - LK ROOSEVELT	Spokane	320	
8806400	EXPRMNTL STURGEON HTCH& KOOTENAI WH STURG INVST	Kootenai	450	
8806500	KOOTENAI RIVER FISHERIES INVESTIGATIONS	IDFG, Kootenai	462	
8815600	DUCK VALLEY RESIDENT FISH PROJECT	SPT	100	
9001800	HABITAT IMPROVEMENT - LAKE ROOSEVELT	CCT	200	
9004400	STRM SURVEY,HTCHRY,HAB IMPROV, MNTR COEUR D	C d'Alene	500	
9101900	HUNGRY HORSE FISHERIES MITIGATION	USFWS	87	
9101901	HUNGRY HORSE MITIGATION/FLATHEAD LAKE - MONITORING	CSKT	40	
9101903	HUNGRY HORSE MITIGATION/HABITAT IMPROVEMENTS	MDFWP	260	
9101904	HUNGRY HORSE MITIGATION - KOKANEE AT CRESTON HTCH	USFWS	600	
9104600	SPOKANE TRIBAL (GALBR SPRGS) HATCHERY - O&M	Spokane	420	
9104700	SHERMAN CREEK HATCHERY - O&M	WDFW	180	
9106700	IDAHO WATER RENTAL - RESIDENT F&W IMPACTS	IDFG	128	
9201000	HABITAT IMPRVMT/ENHNMNT - FORT HALL BOTTOMS	SBT	125	
9400400	CABINET GORGE HATCHERY IMPROVEMENTS	IDFG	15	
9401200	KOOTENAI RIVER WHITE STURGEON - M&E	IDFG	75	
9402900	COLVILLE TRIBAL HATCHERY OPERATION AND MAINTENANCE	CCT	335	
9404300	LAKE ROOSEVELT DATA COLLECTION SYS OP REVIEW (SOR)	Spokane	150	
9404700	LAKE PEND OREILLE KOKANEE	IDFG		370
9404900	KOOTENAI AQUATIC ECOSYSTEM AND FISHERY DEVELOPMENT ST	Kootenai	175	
9405300	BULL TROUT ASSESSMENT - WILLAMETTE/MCKENZIE	ODFW	50	
9405400	BULL TROUT LIFE HISTORY PROJECT - NE OREGON	CTWS	250	
9500100	KALISPEL TRIBE RESIDENT FISH	Kalispel	795	
9500400	LIBBY RESERVOIR MITIGATION PLAN	MDFWP	150	
9500600	COMPREHENSIVE MSTR PLAN/SHO-BANNOCK HATCHERY	SBT, SPT	1,400	
9500900	LAKE ROOSEVELT RAINBOW TROUT NET PENS	LRDA	115	
9501100	CHIEF JOSEPH KOKANEE ENHANCEMENT PROJECT	CCT	500	
9501200	(PHASE IV) BIOLOGICAL RULE CURVES HH/LIBBY	CSKT		100
9501300	(PHASE IV) NEZ PERCE TROUT PONDS	NPT	158	
9501400	(PHASE IV) RESIDENT FISH LOSS ASSESSMENT	IDFG, SBT, NPT		157
9501500	BILLY SHAW RES DEV	SPT	485	

* Recommended for funding in FY96 from BPA's F&W budget

** Not recommended for funding in FY96 from BPA's F&W budget at this time

h:\lawp96\res\frank.mdb -> rptRankResfishProj

Resident Fish Projects Listed by Project Number

Appendix B.1

Proj #	Title	Sponsor	96 Estimate*	New**
9501600	(PHASE IV) GENETIC INVENTORY WESTSLOPE TROUT	NPT	164	
9502500	FLATHEAD RIVER INSTREAM FLOW STUDY	MDFWP		0
9502600	FLATHEAD MODEL WATERSHED	CSKT, MDFWP		0
9502700	LK ROOSEVELT STURGEON	Spokane		264
9502800	ASSESSMENT OF FISHERY IMPR. MOSES LAKE	WDFW		220
9990053	LAKE CREEK LAND ACQUISITION	C d'Alene		230
9990054	SNAKE RIVER NATIVE SALMONID ASSESSMENT	IDFG, ODFW, SBT, SPT, BP		100
9990055	PEND OREILLE LAKE SYSTEM BULL TROUT STUDY	IDFG		100
9990057	GENETIC ANALYSIS OF NATIVE SNAKE RIVER SALMONIDS	IDFG, ODFW, SBT, SPT, BP		100
9990058	LAKE ROOSEVELT MONITORING PROJECT	Spokane		400
9990059	YELLOW PERCH AQUACULTURE FACILITY	Kalispel		
9990060	JOINT RESIDENT FISH STOCK STATUS ASSESSMENT	CCT, Kalispel, Spokane, WDF		375
9990061	BULL TROUT STATUS IN BONNEVILLE RESERVOIR TRIBUTARIES	WDFW		150
9990062	LAKE ROOSEVELT VEGETATIVE PLANTING FEASIBILITY STUDY (WD	WDFW		88
9990063	FORD HATCHERY IMPROVEMENTS AND O&M (WDFW #92-2/0055)	WDFW		200
9990064	NPPC RF PROJECTS			
9990065	PHALON LAKE TRAP IMPROVEMENTS AND O&M (WDFW #92-2/0054)	WDFW		60
9990066	TROUT PONDS	C d'Alene		25
9990067	SPOKANE TRIBAL HATCHERY WELL IMPROVEMENT	Spokane		250
9990068	LAKE ROOSEVELT KOKANEE NET PENS	Spokane/WDFW		198
9990080	CONSUMPTIVE STURGEON FISHERY-HELLS CANYON/OXBOW RES	NPT		250
RESIDENT FISH TOTAL			11,600	3,637

* Recommended for funding in FY96 from BPA's F&W budget

** Not recommended for funding in FY96 from BPA's F&W budget at this time

Resident Fish Projects Listed by Location

Appendix B.2

Proj #	Title	Location	96 Estimate*	New**
9990061	BULL TROUT STATUS IN BONNEVILLE RESERVOIR TRIBUTARIES			150
9990063	FORD HATCHERY IMPROVEMENTS AND O&M (WDFW #92-2/0055)			200
9990065	PHALON LAKE TRAP IMPROVEMENTS AND O&M (WDFW #92-2/0054)			60
		Subtotal		410
8806300	MONITOR & EVAL IMPROV PRJCTS - LK ROOSEVELT	Above Chief Joseph Dam	320	
9001800	HABITAT IMPROVEMENT - LAKE ROOSEVELT	Above Chief Joseph Dam	200	
9004400	STRM SURVEY,HTCHRY,HAB IMPROV, MNTR COEUR D	Above Chief Joseph Dam	500	
9104600	SPOKANE TRIBAL (GALBR SPRGS) HATCHERY - O&M	Above Chief Joseph Dam	420	
9104700	SHERMAN CREEK HATCHERY - O&M	Above Chief Joseph Dam	180	
9402900	COLVILLE TRIBAL HATCHERY OPERATION AND MAINTENANCE	Above Chief Joseph Dam	335	
9404300	LAKE ROOSEVELT DATA COLLECTION SYS OP REVIEW (SOR)	Above Chief Joseph Dam	150	
9500900	LAKE ROOSEVELT RAINBOW TROUT NET PENS	Above Chief Joseph Dam	115	
9501100	CHIEF JOSEPH KOKANEE ENHANCEMENT PROJECT	Above Chief Joseph Dam	500	
9502700	LK ROOSEVELT STURGEON	Above Chief Joseph Dam		264
9990058	LAKE ROOSEVELT MONITORING PROJECT	Above Chief Joseph Dam		400
9990060	JOINT RESIDENT FISH STOCK STATUS ASSESSMENT	Above Chief Joseph Dam		375
9990062	LAKE ROOSEVELT VEGETATIVE PLANTING FEASIBILITY STUDY (WD	Above Chief Joseph Dam		88
9990066	TROUT PONDS	Above Chief Joseph Dam		25
9990067	SPOKANE TRIBAL HATCHERY WELL IMPROVEMENT	Above Chief Joseph Dam		250
9990068	LAKE ROOSEVELT KOKANEE NET PENS	Above Chief Joseph Dam		198
		Subtotal	2,720	1,600
8815600	DUCK VALLEY RESIDENT FISH PROJECT	Above Hells Canyon Dam	100	
9201000	HABITAT IMPRVMT/ENHNMNT - FORT HALL BOTTOMS	Above Hells Canyon Dam	125	
9500600	COMPREHENSIVE MSTR PLAN/SHO-BANNOCK HATCHERY	Above Hells Canyon Dam	1,400	
9501500	BILLY SHAW RES DEV	Above Hells Canyon Dam	485	
9990053	LAKE CREEK LAND ACQUISITION	Above Hells Canyon Dam		230
9990080	CONSUMPTIVE STURGEON FISHERY-HELLS CANYON/OXBOW RES	Above Hells Canyon Dam		250
		Subtotal	2,110	480
8709900	DWORSHAK DAM IMPACTS ASSESSMENT	Clearwater	175	
8740700	DWORSHAK IMPACTS ASSMNT/RAINBOW/SMALLMOUTH BASS E*	Clearwater	181	
9501300	(PHASE IV) NEZ PERCE TROUT PONDS	Clearwater	158	
9501600	(PHASE IV) GENETIC INVENTORY WESTSLOPE TROUT	Clearwater	164	
		Subtotal	678	
9990064	NPPC RF PROJECTS	Columbia River Basin		
		Subtotal		
9101900	HUNGRY HORSE FISHERIES MITIGATION	Flathead	87	
9101901	HUNGRY HORSE MITIGATION/FLATHEAD LAKE - MONITORING	Flathead	40	
9101903	HUNGRY HORSE MITIGATION/HABITAT IMPROVEMENTS	Flathead	260	
9101904	HUNGRY HORSE MITIGATION - KOKANEE AT CRESTON HTCH	Flathead	600	
9502500	FLATHEAD RIVER INSTREAM FLOW STUDY	Flathead		0

* Recommended for funding in FY96 from BPA's F&W budget

** Not recommended for funding in FY96 from BPA's F&W budget at this time

Resident Fish Projects Listed by Location

Appendix B.2

Proj #	Title	Location	96 Estimate*	New**
9502600	FLATHEAD MODEL WATERSHED	Flathead		0
		Subtotal	987	0
9501400	(PHASE IV) RESIDENT FISH LOSS ASSESSMENT	Idaho		157
		Subtotal		157
8346700	LIBBY RESERVOIR LEVELS	Kootenai	325	
8806400	EXPRMNTL STURGEON HTCH& KOOTENAI WH STURG INVST	Kootenai	450	
8806500	KOOTENAI RIVER FISHERIES INVESTIGATIONS	Kootenai	462	
9401200	KOOTENAI RIVER WHITE STURGEON - M&E	Kootenai	75	
9404900	KOOTENAI AQUATIC ECOSYSTEM AND FISHERY DEVELOPMENT ST	Kootenai	175	
9500400	LIBBY RESERVOIR MITIGATION PLAN	Kootenai	150	
9501200	(PHASE IV) BIOLOGICAL RULE CURVES HH/LIBBY	Kootenai		100
		Subtotal	1,637	100
8605000	EVALUATE STURGEON PHYSICAL HABITAT REQUIREMENTS	Mainstem	2,200	
		Subtotal	2,200	
9502800	ASSESSMENT OF FISHERY IMPR. MOSES LAKE	Mid Columbia		220
		Subtotal		220
8446500	TECH ANALYSIS LIBBY	Montana	30	
		Subtotal	30	
9405400	BULL TROUT LIFE HISTORY PROJECT - NE OREGON	Oregon	250	
		Subtotal	250	
9400400	CABINET GORGE HATCHERY IMPROVEMENTS	Pend Oreille	15	
9404700	LAKE PEND OREILLE KOKANEE	Pend Oreille		370
9500100	KALISPEL TRIBE RESIDENT FISH	Pend Oreille	795	
9990055	PEND OREILLE LAKE SYSTEM BULL TROUT STUDY	Pend Oreille		100
9990059	YELLOW PERCH AQUACULTURE FACILITY	Pend Oreille		
		Subtotal	810	470
9106700	IDAHO WATER RENTAL - RESIDENT F&W IMPACTS	Snake	128	
9990054	SNAKE RIVER NATIVE SALMONID ASSESSMENT	Snake		100
9990057	GENETIC ANALYSIS OF NATIVE SNAKE RIVER SALMONIDS	Snake		100
		Subtotal	128	200
9405300	BULL TROUT ASSESSMENT - WILLAMETTE/MCKENZIE	Willamette	50	
		Subtotal	50	
		RESIDENT FISH TOTAL	11,600	3,637

* Recommended for funding in FY96 from BPA's F&W budget

** Not recommended for funding in FY96 from BPA's F&W budget at this time

Resident Fish Projects Listed by Sponsor

Appendix B.3

Proj #	Title	Sponsor	96 Estimate*	New**
9990064	NPPC RF PROJECTS			
		Subtotal		
9004400	STRM SURVEY,HTCHRY,HAB IMPROV, MNTR COEUR D	C d'Alene	500	
9990053	LAKE CREEK LAND ACQUISITION	C d'Alene		230
9990066	TROUT PONDS	C d'Alene		25
		Subtotal	500	255
9001800	HABITAT IMPROVEMENT - LAKE ROOSEVELT	CCT	200	
9402900	COLVILLE TRIBAL HATCHERY OPERATION AND MAINTENANCE	CCT	335	
9501100	CHIEF JOSEPH KOKANEE ENHANCEMENT PROJECT	CCT	500	
		Subtotal	1,035	
9990060	JOINT RESIDENT FISH STOCK STATUS ASSESSMENT	CCT, Kalispel, Spokane, WDFW		375
		Subtotal		375
9101901	HUNGRY HORSE MITIGATION/FLATHEAD LAKE - MONITORING	CSKT	40	
9501200	(PHASE IV) BIOLOGICAL RULE CURVES HH/LIBBY	CSKT		100
		Subtotal	40	100
9502600	FLATHEAD MODEL WATERSHED	CSKT, MDFWP		0
		Subtotal		0
9405400	BULL TROUT LIFE HISTORY PROJECT - NE OREGON	CTWS	250	
		Subtotal	250	
8709900	DWORSHAK DAM IMPACTS ASSESSMENT	IDFG	175	
9106700	IDAHO WATER RENTAL - RESIDENT F&W IMPACTS	IDFG	128	
9400400	CABINET GORGE HATCHERY IMPROVEMENTS	IDFG	15	
9401200	KOOTENAI RIVER WHITE STURGEON - M&E	IDFG	75	
9404700	LAKE PEND OREILLE KOKANEE	IDFG		370
9990055	PEND OREILLE LAKE SYSTEM BULL TROUT STUDY	IDFG		100
		Subtotal	393	470
8806500	KOOTENAI RIVER FISHERIES INVESTIGATIONS	IDFG, Kootenai	462	
		Subtotal	462	
9990054	SNAKE RIVER NATIVE SALMONID ASSESSMENT	IDFG, ODFW, SBT, SPT, BPT		100
9990057	GENETIC ANALYSIS OF NATIVE SNAKE RIVER SALMONIDS	IDFG, ODFW, SBT, SPT, BPT		100
		Subtotal		200
9501400	(PHASE IV) RESIDENT FISH LOSS ASSESSMENT	IDFG, SBT, NPT		157
		Subtotal		157
9500100	KALISPEL TRIBE RESIDENT FISH	Kalispel	795	
9990059	YELLOW PERCH AQUACULTURE FACILITY	Kalispel		
		Subtotal	795	
8806400	EXPRMNTL STURGEON HTCH& KOOTENAI WH STURG INVST	Kootenai	450	
9404900	KOOTENAI AQUATIC ECOSYSTEM AND FISHERY DEVELOPMENT ST	Kootenai	175	

* Recommended for funding in FY96 from BPA's F&W budget

** Not recommended for funding in FY96 from BPA's F&W budget at this time

Resident Fish Projects Listed by Sponsor

Appendix B.3

Proj #	Title	Sponsor	96 Estimate*	New**
			Subtotal	625
9500900	LAKE ROOSEVELT RAINBOW TROUT NET PENS	LRDA	115	
			Subtotal	115
8346700	LIBBY RESERVOIR LEVELS	MDFWP	325	
8446500	TECH ANALYSIS LIBBY	MDFWP	30	
9101903	HUNGRY HORSE MITIGATION/HABITAT IMPROVEMENTS	MDFWP	260	
9500400	LIBBY RESERVOIR MITIGATION PLAN	MDFWP	150	
9502500	FLATHEAD RIVER INSTREAM FLOW STUDY	MDFWP		0
			Subtotal	765
8740700	DWORSHAK IMPACTS ASSMNT/RAINBOW/SMALLMOUTH BASS E*	NPT	181	
9501300	(PHASE IV) NEZ PERCE TROUT PONDS	NPT	158	
9501600	(PHASE IV) GENETIC INVENTORY WESTSLOPE TROUT	NPT	164	
9990080	CONSUMPTIVE STURGEON FISHERY-HELLS CANYON/OXBOW RES	NPT		250
			Subtotal	503
8605000	EVALUATE STURGEON PHYSICAL HABITAT REQUIREMENTS	ODFW	2,200	
9405300	BULL TROUT ASSESSMENT - WILLAMETTE/MCKENZIE	ODFW	50	
			Subtotal	2,250
9201000	HABITAT IMPRVMT/ENHNMNT - FORT HALL BOTTOMS	SBT	125	
			Subtotal	125
9500600	COMPREHENSIVE MSTR PLAN/SHO-BANNOCK HATCHERY	SBT, SPT	1,400	
			Subtotal	1,400
8806300	MONITOR & EVAL IMPROV PRJCTS - LK ROOSEVELT	Spokane	320	
9104600	SPOKANE TRIBAL (GALBR SPRGS) HATCHERY - O&M	Spokane	420	
9404300	LAKE ROOSEVELT DATA COLLECTION SYS OP REVIEW (SOR)	Spokane	150	
9502700	LK ROOSEVELT STURGEON	Spokane		264
9990058	LAKE ROOSEVELT MONITORING PROJECT	Spokane		400
9990067	SPOKANE TRIBAL HATCHERY WELL IMPROVEMENT	Spokane		250
			Subtotal	890
9990068	LAKE ROOSEVELT KOKANEE NET PENS	Spokane/WDFW		198
			Subtotal	198
8815600	DUCK VALLEY RESIDENT FISH PROJECT	SPT	100	
9501500	BILLY SHAW RES DEV	SPT	485	
			Subtotal	585
9101900	HUNGRY HORSE FISHERIES MITIGATION	USFWS	87	
9101904	HUNGRY HORSE MITIGATION - KOKANEE AT CRESTON HTCH	USFWS	600	
			Subtotal	687
9104700	SHERMAN CREEK HATCHERY - O&M	WDFW	180	
9502800	ASSESSMENT OF FISHERY IMPR. MOSES LAKE	WDFW		220
9990061	BULL TROUT STATUS IN BONNEVILLE RESERVOIR TRIBUTARIES	WDFW		150

* Recommended for funding in FY96 from BPA's F&W budget

** Not recommended for funding in FY96 from BPA's F&W budget at this time

h:\w\awp96\res\frank.mdb -> rptRankResfishSponsor

Resident Fish Projects Listed by Sponsor**Appendix B.3**

Proj #	Title	Sponsor	96 Estimate*	New**
9990062	LAKE ROOSEVELT VEGETATIVE PLANTING FEASIBILITY STUDY (WD	WDFW		88
9990063	FORD HATCHERY IMPROVEMENTS AND O&M (WDFW #92-2/0055)	WDFW		200
9990065	PHALON LAKE TRAP IMPROVEMENTS AND O&M (WDFW #92-2/0054)	WDFW		60
		Subtotal	180	718
		RESIDENT FISH TOTAL	11,600	3,637

* Recommended for funding in FY96 from BPA's F&W budget

** Not recommended for funding in FY96 from BPA's F&W budget at this time

Anadromous Fish Projects Listed by Project Number

Appendix C.1

Proj #	Title	Sponsor	96 Estimate*	ESA/Other**
8200300	PREDATION/DEVELOPMENT OF PREY PROTECTION	NBS	404	
8201300	CODED-WIRE TAG RECOVERY	PSMFC	1,161	
8331900	NEW FISH TAG SYSTEM	NMFS	430	
8332300	SMOLT CONDITION & ARRIVAL TIMING AT LWR GRANITE	IDFG	318	
8335000	NEZ PERCE TRIBAL HATCHERY	NPT	3,340	
8343500	UMATILLA HATCHERY SATELLITE FACILITIES O&M	CTUIR	334	
8343600	UMATILLA PASSAGE O&M	USBR	281	
8401400	SMOLT MONITORING AT FEDERAL DAMS	NMFS	655	
8402100	MAINSTEM, MIDDLE FORK, JOHN DAY RIVER	ODFW	297	
8402200	MAINSTEM AND UPPER JOHN DAY RIVER	USFS	19	
8402300	CAMAS CREEK, IDAHO	USFS	7	
8402400	MARSH / ELK / UPPER SALMON RIVER, IDAHO	USFS	47	
8402500	WALLOWA CREEK, GRANDE RONDE RIVER, OREGON (ODFW)	ODFW	161	
8403300	UMATILLA HATCHERY	ODFW	908	
8403306	UMATILLA HATCHERY - WATER SUPPLY	Watson	468	
8506200	PASSAGE IMPROVEMENT EVALUATION	Battelle	281	
8607500	LITTLE NACHES PASSAGE	USFS	2	
8611800	FISH AND WILDLIFE PROGRAM ASSISTANCE EFFORT	Battelle		0
8612400	INSP SERV FOR LITTLE FALL CREEK PASS RE:86-090	ODFW	4	
8710001	UMATILLA RIVER BASIN ANADROMOUS FISH HABITAT ENHANCEMENT	CTUIR	293	
8710002	UMATILLA HABITAT IMPROVEMENT (ODFW)	ODFW	190	
8712700	SMOLT MONITORING BY NON-FEDERAL ENTITIES	PSMFC	1,237	
8740100	TRAVEL TIME AND SURVIVAL SMOLT PHYSIOLOGY	NBS	465	285
8741302	ANALYZE HISTORIC DATA FOR JUVENILE/ADULT PROD	Univ/WA	0	
8802200	UMATILLA RIVER BASIN TRAP AND HAUL PROGRAM	CTUIR	382	
8805301	NE ORE OUTPLANTING FACILITIES MASTER PLAN - NEZ PERCE	NPT	400	
8805302	NE ORE OUTPLANTING FACILITIES MASTER PLAN - CTUIR	CTUIR	0	
8805303	HOOD RIVER PRODUCTION PROGRAM	CTWS, ODF	374	
8805304	NE ORE OUTPLANTING FACILITIES MASTER PLAN - ODFW	ODFW	394	
8810800	SYSTEM MONITORING AND EVALUATION PROGRAM (SMEP)			2,000
8810801	COORDINATED INFORMATION SYSTEM (CIS)	PSMFC	792	
8810803	NORTHWEST ENVIRONMENTAL DATABASE	PSMFC		1,200
8811500	YAKIMA HATCHERY - CONSTRUCTION	CH2M H	4,114	
8812000	YAKIMA NATURAL PRODUCTION & ENHANCEMENT PROGRAM	YIN	1,403	
8812400	F & W PROGRAM INTERNAL SUPPORT ACTIVITIES	BPA	0	
8816000	BIOENGR EVAL OF RETROFITTED OXY SUPPLEMENTATION	ODFW	98	

* Recommended for funding in FY96 from BPA's F&W budget

** Combination of ESA and Other projects, defined as:

ESA: Recommended for funding in FY96 from BPA's ESA budget

Other: Not recommended for funding in FY96 from BPA's F&W budget at this time

Anadromous Fish Projects Listed by Project Number

Appendix C.1

Proj #	Title	Sponsor	96 Estimate*	ESA/Other**
8816300	EFFECTS OF CODED WIRE TAGS ON SPRING CHINOOK	WDFW	174	
8902401	EVAL UMATILLA BASIN PRJ - 3-MILE/WEID CANAL SCR	ODFW	240	
8902700	POWER/REPAY O&M FOR USBR CPR PUMPING PROJ	PPL	271	
8903000	EVAL OF PRE-REL TEMP ACCLIMATION AT GRAND WATER HTCH	WDFW	34	
8906200	COLUMBIA BASIN FISH AND WILDLIFE AUTHORITY	CBFWF	395	
8906500	ANN CD WIRE TAG PROG-MISSING PROD OR/WA (USFWS) PLUS FISH M.	USFWS	249	
8906600	ANN CD WIRE TAG PROG-MISSING PROD WA HTCH (WDF)	WDFW	294	
8906900	ANN CD WIRE TAG PROG-MISSING PROD OR HTC (ODFW)	ODFW	125	
8907201	SCIENTIFIC REVIEW GROUP SUPPORT	CBFWF	450	
8908200	YAKIMA HATCHERY EXPERIMENTAL DESIGN - WDF	WDFW	600	
8909600	GENETIC MONT/EVAL PROG FOR SALM/STLHD	NMFS	232	
8909800	EVAL OF SUMMLMTG SALMON/CLRWTR RV W/ HATCH ST	IDFG	791	
8909801	SALM SUPPLE STUDIES IN ID RV - USFWS	USFWS	91	
8909802	SALMON SUPPLE STUDIES IN ID RV - NEZ PERCE TRB	NPT	145	
8909803	SALMON SUPPLE IN ID RIVERS - SHOSHONE-BANNOCK TRB	SBT	121	
8910500	YAKIMA - SPECIES INTERACTION STUDY	WDFW	300	
8910700	EPIDEMIOLOGICAL SURVIVAL METHOD	Univ/WA	154	
8910800	COLUMBIA RIVER SALMON PASSAGE MODEL	Univ/WA		900
9000500	UMATILLA HATCHERY - MONITORING/EVAL PRJCTS	ODFW	544	
9000501	UMATILLA BASIN NATURAL PRODUCTION M&E	CTUIR	615	
9005200	PERF/STOCK PROD IMPACTS OF HATCHERY SUPPL	NBS	300	
9006100	FUNGAL INFECTION: SPRING/SUMMER CHINOOK SALMON		0	
9006900	YAKIMA HATCHERY - FINAL DESIGN	CH2M H	468	
9007700	SQUAWFISH MANAGEMENT	PSMFC	3,843	
9007800	SQUAWFISH MANAGEMENT (SUPPORT)	NBS	400	
9008000	COLUMBIA BASIN PIT-TAG INFORMATION SYSTEM (PTAGIS)	PSMFC	983	
9009300	GENETIC ANALYSES OF ONCORHYNCHUS NERKA (ESA)	Univ/ID		0
9101400	UMATILLA SATELLITES - PLNG,SITING,DESIGN,CNSTR	Watson	3,016	
9102800	PIT TAGGING WILD CHINOOK	NMFS	313	
9102900	LIFE HISTORY OF FALL CHIN IN COL R (ESA)	NBS	1,053	450
9104000	BONNEVILLE DAM JUVENILE FISH SAMPLING FACILITY	COE		570
9104100	IDAHO WATER RENTAL - FLOWS	ID Power		1,000
9105100	ANALYSIS OF REL OF RIVERFLOW TO TRAVEL TIME (ESA)	Univ/WA		0
9105500	SUPPLEMENTATION FISH QUALITY (NATURES)	NMFS	281	
9105700	YAKIMA PHASE 2 SCREEN FABRICATION	WDFW	300	
9106400	PIT TAG FACILITIES	COE		0
9106600	ICE HARBOR/LOWER GRANITE TRAPPING (CHF) (ESA)			
9107100	SNAKE RIVER SOCKEYE SALMON HABITAT (ESA)	SBT	408	

* Recommended for funding in FY96 from BPA's F&W budget

h:\w\awp96\pt.mdb -> rptRankLineProj

27

** Combination of ESA and Other projects, defined as:

ESA: Recommended for funding in FY96 from BPA's ESA budget

Other: Not recommended for funding in FY96 from BPA's F&W budget at this time

Anadromous Fish Projects Listed by Project Number

Appendix C.1

Proj #	Title	Sponsor	96 Estimate*	ESA/Other**
9107200	REDFISH LAKE SOCKEYE REARING AND TRAPPING (ESA)	IDFG	612	
9107300	IDAHO NATURAL PRODUCTION MONITORING/EVAL 83-7(ESA)	IDFG	650	
9107500	YAKIMA PHASE II SCREENS - CONSTRUCTION	USBR	1,547	
9200900	YAKIMA SCREENS - PHASE II - O & M	WDFW	75	
9201400	YAKIMA HABITAT ASSESSMENT AND IMPROVEMENT	YIN	234	
9202200	WILD SMOLT BEHAVIOR/PHYSIOLOGY (ESA)	NMFS	346	
9202601	GRAND RONDE MODEL WATERSHED CHARTER DEVELOPMENT	PNRS	280	
9202602	EASTERN WA MODEL WATERSHED DEVELOPMENT PLN PHASE	WS Cons Cm	115	
9202603	MODEL WATERSHED STUDIES - LEMHI RIVER BASIN	ID Soil	141	
9202800	REGIONAL FISH SCREENING	CBFWF	164	
9203200	LIFE CYCLE MODEL DEVEL/APPLIC TO SSP IN SNAKE RV	USFS		50
9203800	WATERSHED EDUCATION INTERACTIVE DISPLAY FOR OMSI	New Project	0	
9204000	REDFISH LAKE SOCKEYE BROODSTOCK REARING/RESEARCH	NMFS	429	
9204100	FISH PASSAGE EVALUATIONS	COE	241	
9204300	INTEGRATED HATCHERY OPERATIONS TEAM (EIP)	PSMFC	465	
9206500	F&W PUBLIC EDUCATION PROJECT	Consultant	6	
9207100	ASSESS TECH TO IMPROVE MEASRMNT CAPABILITIES (M&E)	Battelle	0	
9207300	DEVELOPMENT OF LASER-MARKING SALMONIDS	WDFW	0	320
9300300	SHERMAN PASS SCENIC BYWAY VISITORS CENTER	USFS	5	
9300800	ALLOWABLE GAS SUPERSATURATION AT DAMS	Watson		0
9301100	REGIONAL HABITAT EDUCATION SUPPORT	BPA	12	
9301200	EVALUATION OF CARRYING CAPACITY	Battelle	94	
9301300	TECH ASSISTANCE/REVIEW	SP Cramer	0	
9301400	NEW AMENDED PROGRAM PHASE III (CAPITAL)	BPA		1,000
9301900	DESIGN/CONSTRUCT POWERDALE DAM FAC (ODFW)	ODFW	0	
9302900	SURVIVAL EST FOR PASSAGE THROUGH DAMS/RESERVOIRS	NMFS	748	
9303600	HAYFORK GLORYHOLE	NPT	30	
9303701	TECHNICAL ASSISTANCE WITH THE LIFE CYCLE MODEL	Paulsen		53
9303800	N FK JOHN DAY ANADR FISH HABITAT ENHCMNT - USFS	USFS	53	
9304000	FIFTEENMILE CREEK HABITAT IMPROVEMENT	ODFW	229	
9304300	FLOW VOLUME PROVISIONS/SUPPORT	Various		75
9304400	EDF WATER ACQUISITION PILOT PROJECT	EDF		125
9304500	BUCK HOLLOW WATERSHED ENHANCEMENT (ODFW)	ODFW	53	
9305500	WATER PURCHASE ACQUISITION/LEASE FEE/PURCHASE OPT	Skyline Farm		3,600
9305600	ASSESSMENT OF CAPTIVE SALMONID BROODSTOCK TECH	NMFS	979	
9306000	COLUMBIA RIVER TERMINAL FISHERIES RESEARCH PROJECT	ODFW	786	
9306600	OREGON FISH SCREENS PROJECT	ODFW	250	
9306700	COMPREHENSIVE ANALYSIS OF PRODUCTION (CEA)	USFWS	94	

* Recommended for funding in FY96 from BPA's F&W budget

** Combination of ESA and Other projects, defined as:

ESA: Recommended for funding in FY96 from BPA's ESA budget

Other: Not recommended for funding in FY96 from BPA's F&W budget at this time

Anadromous Fish Projects Listed by Project Number

Appendix C.1

Proj #	Title	Sponsor	96 Estimate*	ESA/Other**
9307000	GRAND RONDE,IMNAHA,JOHN DAY RVR TELEMETRY TRACKING	PNRS	65	
9401300	ANNUAL PROJECTS REVIEW	Various		10
9401500	IDAHO FISH SCREENING IMPROVEMENT	IDFG	701	
9401600	SUPPLEMENTATION PROJECTS	New Project		350
9401700	IDAHO MODEL WATERSHED HABITAT PROJECTS	Model Waters	23	
9401800	WASHINGTON MODEL WATERSHED HABITAT PROJECTS	Cons Districts		250
9402300	SELECTIVE HARVEST	Consultant		500
9402600	PACIFIC LAMPREY RESEARCH AND RESTORATION PROJECT	CTUIR	335	
9402700	GRANDE RONDE MODEL WATERSHED HABITAT PROJECTS	GRMW	260	650
9403000	RASP IN GRAND RONDE MODEL WATERSHED	Mobrand	0	
9403100	ANALYTICAL COORDINATION WORKGROUP - PATH	NMFS		793
9403300	FISH PASSAGE CENTER	PSMFC	865	
9403400	UPPER CLEARWATER - ASSESSING SUMMER/FALL CHINOOK	NPT	226	
9403900	WALLOWA BASIN PROJECT PLANNING	NPT	50	
9404200	TROUT CREEK OPERATION & MAINTENANCE	ODFW	187	
9404600	ECOSYSTEM MANAGEMENT	Mobrand	183	
9405000	SALMON RIVER HABITAT O&M	SBT	253	
9405600	WARM SPRINGS HABITAT ENHANCEMENT	CTWS		0
9405900	BPA ENVIRONMENTAL EDUCATION TRAINING/YAKIMA RIVER BASIN	ESD 105	90	
9406500	PATAHA CREEK MODEL WATERSHED PROJECT	SWCD	19	
9500200	IHOT HATCHERY AUDITS	Consultant	281	
9501000	F&W NEWSLETTER DEVELOPMENT GRANT	Noe	0	
9502100	OKANOGAN WATERSHED PLANNING	CCT		125
9503200	YAKIMA/NELSON SPRINGS FACILITIES JANITORIAL SERVIC	Consultant	7	
9503300	O&M YAKIMA R BASIN FISH PROTECTION, MIT & ENHANCE	YIN	12	
9504100	COST SHARE 500 KAF UPPER SNAKE	New Project		2,000
9504200	INCREASED PREDATION MEASURES	New Project		0
9504300	TRANSPORTATION EVALUATION	New Project		
9504400	COST SHARE BIOLOGICAL ANALYSIS CENTER	New Project		250
9504500	COST SHARE IMPROVED HARVEST ESC. MODEL	New Project		100
9504600	EXPENSES FOR UPDATING SUBBASIN PLANS	New Project		100
9504700	IRRIGATION DIVERSION SCREENING (FED. LANDS)	New Project	0	3,000
9504800	EVALUATE HANFORD - K BASIN PRODUCTION	New Project		500
9504900	EMERGENCY SUPPLEMENTATION ACTIONS	New Project		2,000
9505100	SUBBASIN PRODUCTION PROJECTS	New Project		5,000
9505200	EMERGENCY SUPPLEMENTATION FACILITIES	New Project		5,000
9506200	YAKIMA/KLICKITAT FISHERIES PROJ ADAPTIVE MGMT	YIN	748	
9506300	YAKIMA/KLICKITAT MONITORING AND EVALUATION PROGRAM	YIN	1,449	

* Recommended for funding in FY96 from BPA's F&W budget

** Combination of ESA and Other projects, defined as:

ESA: Recommended for funding in FY96 from BPA's ESA budget

Other: Not recommended for funding in FY96 from BPA's F&W budget at this time

Anadromous Fish Projects Listed by Project Number

Appendix C.1

Proj #	Title	Sponsor	96 Estimate*	ESA/Other**
9990001	WILLAMETTE FALLS FISHWAY RESTORATION AND MODERNIZATION	ODFW		2,125
9990002	MONITOR SEDIMENT LEVELS IN GRANDE RONDE/JOHN DAY RIVERS	CRITFC		50
9990003	TERMINAL AREA ESCAPEMENT ESTIMATION	CRITFC		300
9990004	JOHN DAY RIVER WATER TEMPERATURE DATABASE	CRITFC		114
9990005	MAINSTEM COLUMBIA/SNAKE RIVER VIDEO FISH COUNTING	CRITFC		198
9990006	FISH PASSAGE AND SCREENING FOR TOPPENISH CREEK DIVERSION	USFWS		295
9990008	M & E OF SNAKE RIVER FALL CHINOOK SUPPLEMENTATION UPSTREAM	USFWS, WD		65
9990009	UMATILLA RIVER ADULT FISH PASSAGE AT FEED CANAL DAM	FSOC		250
9990010	COLUMBIA RIVER BASIN TRIBUTARY ADULT FISH PASSAGE	FSOC		500
9990011	FERC/FEDERAL TRIBUTARY PROJECT COORDINATION	CBFWF		100
9990012	SALMON RIVER FISH PASSAGE/IRRIGATION IMPROVEMENT	SBT/FSOC		1,300
9990014	DEVELOP SUBREGIONAL PLANS	CBFWF		400
9990015	EVALUATION OF PROGRAM PROGRESS/ANNUAL RESULTS SYMPOSIUM	CBFWF		250
9990017	UPDATE SUBBASIN PLANS	CBFWF		200
9990018	OMAK CREEK ANADROMOUS FISH REINTRODUCTION	CCT		75
9990019	LIVESTOCK MANAGEMENT PROJECT	CTWS		61
9990020	REDUCE SHAD IMPACTS ABOVE BONNEVILLE			
9990021	SUPPLEMENTATION PLANS FOR UNLISTED SALMON			
9990023	STEELHEAD ACCLIMATION PONDS			
9990024	FEASIBILITY OF FALL CHINOOK ABOVE HELLS CANYON			
9990025	STUDY GENETICS OF LIFE HISTORY VARIATION			
9990026	STUDY IN/OUT BREEDING DEPRESSION			
9990027	SALMON CORPS	DOE, CRITFC		300
9990028	FINAL PLANNING AND IMPLEMENTATION OF HIGH PRIORITY SUPPLEME	SBT		150
9990029	PANTHER CREEK TRAP AND HAUL OPERATION	SBT		900
9990030	CRITICAL STOCK CHINOOK SALMON GAMETE PRESERVATION	NPT		211
9990031	PORTABLE CHINOOK SALMON ADULT COLLECTION/HOLDING AND JUVE	NPT		411
9990032	SUMMER CHINOOK SALMON REARING FACILITIES IN JOHNSON CREEK	NPT		400
9990033	SELWAY RIVER CHINOOK SALMON RESTORATION	NPT		417
9990034	COMPREHENSIVE ANADROMOUS SALMONID SYSTEM MONITORING	NPT		300
9990035	ASSISTANCE FOR SHOSHONE-BANNOCK TRIBES' SNAKE RIVER POLICY	SBT		100
9990037	CLEARWATER BASIN SUBWATERSHED PRIORITIZATION	ID Soil		50
9990069	JUVENILE SCREENS AND SMOLT TRAPS AT WALLA WALLA RIVER	CTUIR	90	
9990070	RIPARIAN AND FISH HABITAT ENHANCEMENT - WALLA WALLA BASIN	CTUIR		150
9990071	ANADROMOUS FISH PASSAGE IMPROVEMENT AT WALLA WALLA IRRIG/	CTUIR	100	
9999999	LAW ENFORCEMENT GENERAL	Various	3,317	
ANADROMOUS TOTAL			54,341	41,928

* Recommended for funding in FY96 from BPA's F&W budget

** Combination of ESA and Other projects, defined as:

ESA: Recommended for funding in FY96 from BPA's ESA budget

Other: Not recommended for funding in FY96 from BPA's F&W budget at this time

Anadromous Fish Projects Listed by Location

Appendix C.2

Proj #	Title	Location	96 Estimate*	ESA/Other**
9300300	SHERMAN PASS SCENIC BYWAY VISITORS CENTER	Above Chief Joseph Dam	5	
		Subtotal	5	
9990024	FEASIBILITY OF FALL CHINOOK ABOVE HELLS CANYON	Above Hells Canyon Dam		
		Subtotal		
8335000	NEZ PERCE TRIBAL HATCHERY	Clearwater	3,340	
9303600	HAYSFORK GLORYHOLE	Clearwater	30	
9403400	UPPER CLEARWATER - ASSESSING SUMMER/FALL CHINOOK	Clearwater	226	
9990033	SELWAY RIVER CHINOOK SALMON RESTORATION	Clearwater		417
9990037	CLEARWATER BASIN SUBWATERSHED PRIORITIZATION	Clearwater		50
		Subtotal	3,596	467
8201300	CODED-WIRE TAG RECOVERY	Columbia River Basin	1,161	
8331900	NEW FISH TAG SYSTEM	Columbia River Basin	430	
8611800	FISH AND WILDLIFE PROGRAM ASSISTANCE EFFORT	Columbia River Basin		0
8741302	ANALYZE HISTORIC DATA FOR JUVENILE/ADULT PROD	Columbia River Basin	0	
8810800	SYSTEM MONITORING AND EVALUATION PROGRAM (SMEP)	Columbia River Basin		2,000
8810801	COORDINATED INFORMATION SYSTEM (CIS)	Columbia River Basin	792	
8810803	NORTHWEST ENVIRONMENTAL DATABASE	Columbia River Basin		1,200
8812400	F & W PROGRAM INTERNAL SUPPORT ACTIVITIES	Columbia River Basin	0	
8816000	BIOENGR EVAL OF RETROFITTED OXY SUPPLEMENTATION	Columbia River Basin	98	
8816300	EFFECTS OF CODED WIRE TAGS ON SPRING CHINOOK	Columbia River Basin	174	
8903000	EVAL OF PRE-REL TEMP ACCLIMATION AT GRAND WATER HTCH	Columbia River Basin	34	
8906200	COLUMBIA BASIN FISH AND WILDLIFE AUTHORITY	Columbia River Basin	395	
8906500	ANN CD WIRE TAG PROG-MISSING PROD OR/WA (USFWS) PLUS F	Columbia River Basin	249	
8906600	ANN CD WIRE TAG PROG-MISSING PROD WA HTCH (WDF)	Columbia River Basin	294	
8906900	ANN CD WIRE TAG PROG-MISSING PROD OR HTC (ODFW)	Columbia River Basin	125	
8907201	SCIENTIFIC REVIEW GROUP SUPPORT	Columbia River Basin	450	
9005200	PERF/STOCK PROD IMPACTS OF HATCHERY SUPPL	Columbia River Basin	300	
9006100	FUNGAL INFECTION: SPRING/SUMMER CHINOOK SALMON	Columbia River Basin	0	
9008000	COLUMBIA BASIN PIT-TAG INFORMATION SYSTEM (PTAGIS)	Columbia River Basin	983	
9202800	REGIONAL FISH SCREENING	Columbia River Basin	164	
9203800	WATERSHED EDUCATION INTERACTIVE DISPLAY FOR OMSI	Columbia River Basin	0	
9204300	INTEGRATED HATCHERY OPERATIONS TEAM (EIP)	Columbia River Basin	465	
9206500	F&W PUBLIC EDUCATION PROJECT	Columbia River Basin	6	
9207100	ASSESS TECH TO IMPROVE MEASRMNT CAPABILITIES (M&E)	Columbia River Basin	0	
9207300	DEVELOPMENT OF LASER-MARKING SALMONIDS	Columbia River Basin	0	320
9301100	REGIONAL HABITAT EDUCATION SUPPORT	Columbia River Basin	12	
9301300	TECH ASSISTANCE/REVIEW	Columbia River Basin	0	
9301400	NEW AMENDED PROGRAM PHASE III (CAPITAL)	Columbia River Basin		1,000
9305600	ASSESSMENT OF CAPTIVE SALMONID BROODSTOCK TECH	Columbia River Basin	979	

* Recommended for funding in FY96 from BPA's F&W budget

** Combination of ESA and Other projects, defined as:

ESA: Recommended for funding in FY96 from BPA's ESA budget

Other: Not recommended for funding in FY96 from BPA's F&W budget at this time

Anadromous Fish Projects Listed by Location

Appendix C.2

Proj #	Title	Location	96 Estimate*	ESA/Other**
9306700	COMPREHENSIVE ANALYSIS OF PRODUCTION (CEA)	Columbia River Basin	94	
9401300	ANNUAL PROJECTS REVIEW	Columbia River Basin		10
9401600	SUPPLEMENTATION PROJECTS	Columbia River Basin		350
9402300	SELECTIVE HARVEST	Columbia River Basin		500
9402600	PACIFIC LAMPREY RESEARCH AND RESTORATION PROJECT	Columbia River Basin	335	
9403100	ANALYTICAL COORDINATION WORKGROUP - PATH	Columbia River Basin		793
9403300	FISH PASSAGE CENTER	Columbia River Basin	865	
9404600	ECOSYSTEM MANAGEMENT	Columbia River Basin	183	
9500200	IHOT HATCHERY AUDITS	Columbia River Basin	281	
9501000	F&W NEWSLETTER DEVELOPMENT GRANT	Columbia River Basin	0	
9504400	COST SHARE BIOLOGICAL ANALYSIS CENTER	Columbia River Basin		250
9504500	COST SHARE IMPROVED HARVEST ESC. MODEL	Columbia River Basin		100
9504600	EXPENSES FOR UPDATING SUBBASIN PLANS	Columbia River Basin		100
9505100	SUBBASIN PRODUCTION PROJECTS	Columbia River Basin		5,000
9990003	TERMINAL AREA ESCAPEMENT ESTIMATION	Columbia River Basin		300
9990010	COLUMBIA RIVER BASIN TRIBUTARY ADULT FISH PASSAGE	Columbia River Basin		500
9990011	FERC/FEDERAL TRIBUTARY PROJECT COORDINATION	Columbia River Basin		100
9990014	DEVELOP SUBREGIONAL PLANS	Columbia River Basin		400
9990015	EVALUATION OF PROGRAM PROGRESS/ANNUAL RESULTS SYMP	Columbia River Basin		250
9990017	UPDATE SUBBASIN PLANS	Columbia River Basin		200
9990020	REDUCE SHAD IMPACTS ABOVE BONNEVILLE	Columbia River Basin		
9990021	SUPPLEMENTATION PLANS FOR UNLISTED SALMON	Columbia River Basin		
9990023	STEELHEAD ACCLIMATION PONDS	Columbia River Basin		
9990025	STUDY GENETICS OF LIFE HISTORY VARIATION	Columbia River Basin		
9990026	STUDY IN/OUT BREEDING DEPRESSION	Columbia River Basin		
9990027	SALMON CORPS	Columbia River Basin		300
9999999	LAW ENFORCEMENT GENERAL	Columbia River Basin	3,317	
		Subtotal	12,184	13,673
9304500	BUCK HOLLOW WATERSHED ENHANCEMENT (ODFW)	Deschutes	53	
9404200	TROUT CREEK OPERATION & MAINTENANCE	Deschutes	187	
9405600	WARM SPRINGS HABITAT ENHANCEMENT	Deschutes		0
9990019	LIVESTOCK MANAGEMENT PROJECT	Deschutes		61
		Subtotal	240	61
9304000	FIFTEENMILE CREEK HABITAT IMPROVEMENT	Fifteenmile	229	
		Subtotal	229	
8402500	WALLOWA CREEK, GRANDE RONDE RIVER, OREGON (ODFW)	Grande Ronde/Imnaha	161	
8805301	NE ORE OUTPLANTING FACILITIES MASTER PLAN - NEZ PERCE	Grande Ronde/Imnaha	400	
8805302	NE ORE OUTPLANTING FACILITIES MASTER PLAN - CTUIR	Grande Ronde/Imnaha	0	
9202601	GRAND RONDE MODEL WATERSHED CHARTER DEVELOPMENT	Grande Ronde/Imnaha	280	

* Recommended for funding in FY96 from BPA's F&W budget

** Combination of ESA and Other projects, defined as:

ESA: Recommended for funding in FY96 from BPA's ESA budget

Other: Not recommended for funding in FY96 from BPA's F&W budget at this time

Anadromous Fish Projects Listed by Location

Appendix C.2

Proj #	Title	Location	96 Estimate*	ESA/Other**
9307000	GRAND RONDE,IMNAHA,JOHN DAY RVR TELEMETRY TRACKING	Grande Ronde/Imnaha	65	
9402700	GRANDE RONDE MODEL WATERSHED HABITAT PROJECTS	Grande Ronde/Imnaha	260	650
9403000	RASP IN GRAND RONDE MODEL WATERSHED	Grande Ronde/Imnaha	0	
9403900	WALLOWA BASIN PROJECT PLANNING	Grande Ronde/Imnaha	50	
9990002	MONITOR SEDIMENT LEVELS IN GRANDE RONDE/JOHN DAY RIVE	Grande Ronde/Imnaha		50
		Subtotal	1,216	700
8805303	HOOD RIVER PRODUCTION PROGRAM	Hood	374	
8805304	NE ORE OUTPLANTING FACILITIES MASTER PLAN - ODFW	Hood	394	
9301900	DESIGN/CONSTRUCT POWERDALE DAM FAC (ODFW)	Hood	0	
		Subtotal	768	
8402100	MAINSTEM, MIDDLE FORK, JOHN DAY RIVER	John Day	297	
8402200	MAINSTEM AND UPPER JOHN DAY RIVER	John Day	19	
9303800	N FK JOHN DAY ANADR FISH HABITAT ENHCMNT - USFS	John Day	53	
9990004	JOHN DAY RIVER WATER TEMPERATURE DATABASE	John Day		114
		Subtotal	369	114
8612400	INSP SERV FOR LITTLE FALL CREEK PASS RE:86-090	Lower Columbia	4	
9990001	WILLAMETTE FALLS FISHWAY RESTORATION AND MODERNIZATI	Lower Columbia		2,125
		Subtotal	4	2,125
8200300	PREDATION/DEVELOPMENT OF PREY PROTECTION	Mainstem	404	
8401400	SMOLT MONITORING AT FEDERAL DAMS	Mainstem	655	
8712700	SMOLT MONITORING BY NON-FEDERAL ENTITIES	Mainstem	1,237	
8740100	TRAVEL TIME AND SURVIVAL SMOLT PHYSIOLOGY	Mainstem	465	285
8910700	EPIDEMIOLOGICAL SURVIVAL METHOD	Mainstem	154	
8910800	COLUMBIA RIVER SALMON PASSAGE MODEL	Mainstem		900
9007700	SQUAWFISH MANAGEMENT	Mainstem	3,843	
9007800	SQUAWFISH MANAGEMENT (SUPPORT)	Mainstem	400	
9104000	BONNEVILLE DAM JUVENILE FISH SAMPLING FACILITY	Mainstem		570
9105100	ANALYSIS OF REL OF RIVERFLOW TO TRAVEL TIME (ESA)	Mainstem		0
9204100	FISH PASSAGE EVALUATIONS	Mainstem	241	
9300800	ALLOWABLE GAS SUPERSATURATION AT DAMS	Mainstem		0
9301200	EVALUATION OF CARRYING CAPACITY	Mainstem	94	
9302900	SURVIVAL EST FOR PASSAGE THROUGH DAMS/RESERVOIRS	Mainstem	748	
9303701	TECHNICAL ASSISTANCE WITH THE LIFE CYCLE MODEL	Mainstem		53
9306000	COLUMBIA RIVER TERMINAL FISHERIES RESEARCH PROJECT	Mainstem	786	
9504200	INCREASED PREDATION MEASURES	Mainstem		0
9504300	TRANSPORTATION EVALUATION	Mainstem		
9990005	MAINSTEM COLUMBIA/SNAKE RIVER VIDEO FISH COUNTING	Mainstem		198
		Subtotal	9,026	2,006

* Recommended for funding in FY96 from BPA's F&W budget

** Combination of ESA and Other projects, defined as:

ESA: Recommended for funding in FY96 from BPA's ESA budget

Other: Not recommended for funding in FY96 from BPA's F&W budget at this time

Anadromous Fish Projects Listed by Location

Appendix C.2

Proj #	Title	Location	96 Estimate*	ESA/Other**
9502100	OKANOGAN WATERSHED PLANNING	Mid Columbia		125
9504800	EVALUATE HANFORD - K BASIN PRODUCTION	Mid Columbia		500
9990018	OMAK CREEK ANADROMOUS FISH REINTRODUCTION	Mid Columbia		75
		Subtotal		700
9306600	OREGON FISH SCREENS PROJECT	Oregon	250	
		Subtotal	250	
9009300	GENETIC ANALYSES OF ONCORHYNCHUS NERKA (ESA)	Redfish Lake		0
9107100	SNAKE RIVER SOCKEYE SALMON HABITAT (ESA)	Redfish Lake	408	
9107200	REDFISH LAKE SOCKEYE REARING AND TRAPPING (ESA)	Redfish Lake	612	
9204000	REDFISH LAKE SOCKEYE BROODSTOCK REARING/RESEARCH	Redfish Lake	429	
		Subtotal	1,449	0
8402300	CAMAS CREEK, IDAHO	Salmon	7	
8402400	MARSH / ELK / UPPER SALMON RIVER, IDAHO	Salmon	47	
8909803	SALMON SUPPLE IN ID RIVERS - SHOSHONE-BANNOCK TRB	Salmon	121	
9107300	IDAHO NATURAL PRODUCTION MONITORING/EVAL 83-7(ESA)	Salmon	650	
9202603	MODEL WATERSHED STUDIES - LEMHI RIVER BASIN	Salmon	141	
9203200	LIFE CYCLE MODEL DEVEL/APPLIC TO SSP IN SNAKE RV	Salmon		50
9401700	IDAHO MODEL WATERSHED HABITAT PROJECTS	Salmon	23	
9405000	SALMON RIVER HABITAT O&M	Salmon	253	
9990012	SALMON RIVER FISH PASSAGE/IRRIGATION IMPROVEMENT	Salmon		1,300
9990029	PANTHER CREEK TRAP AND HAUL OPERATION	Salmon		900
9990032	SUMMER CHINOOK SALMON REARING FACILITIES IN JOHNSON C	Salmon		400
		Subtotal	1,242	2,650
8332300	SMOLT CONDITION & ARRIVAL TIMING AT LWR GRANITE	Snake	318	
8909600	GENETIC MONT/EVAL PROG FOR SALM/STLHD	Snake	232	
8909800	EVAL OF SUMMLMTG SALMON/CLRWTR RV W/ HATCH ST	Snake	791	
8909801	SALM SUPPLE STUDIES IN ID RV - USFWS	Snake	91	
8909802	SALMON SUPPLE STUDIES IN ID RV - NEZ PERCE TRB	Snake	145	
9102800	PIT TAGGING WILD CHINOOK	Snake	313	
9102900	LIFE HISTORY OF FALL CHIN IN COL R (ESA)	Snake	1,053	450
9104100	IDAHO WATER RENTAL - FLOWS	Snake		1,000
9106400	PIT TAG FACILITIES	Snake		0
9106600	ICE HARBOR/LOWER GRANITE TRAPPING (CHF) (ESA)	Snake		
9304300	FLOW VOLUME PROVISIONS/SUPPORT	Snake		75
9304400	EDF WATER ACQUISITION PILOT PROJECT	Snake		125
9305500	WATER PURCHASE ACQUISITION/LEASE FEE/PURCHASE OPT	Snake		3,600
9401500	IDAHO FISH SCREENING IMPROVEMENT	Snake	701	
9504100	COST SHARE 500 KAF UPPER SNAKE	Snake		2,000
9504700	IRRIGATION DIVERSION SCREENING (FED. LANDS)	Snake	0	3,000

* Recommended for funding in FY96 from BPA's F&W budget

** Combination of ESA and Other projects, defined as:

ESA: Recommended for funding in FY96 from BPA's ESA budget

Other: Not recommended for funding in FY96 from BPA's F&W budget at this time

h:\w\lawp96\pt.mdb -> rptRankLineLocation

Anadromous Fish Projects Listed by Location

Appendix C.2

Proj #	Title	Location	96 Estimate*	ESA/Other**
9504900	EMERGENCY SUPPLEMENTATION ACTIONS	Snake		2,000
9505200	EMERGENCY SUPPLEMENTATION FACILITIES	Snake		5,000
9990008	M & E OF SNAKE RIVER FALL CHINOOK SUPPLEMENTATION UPST	Snake		65
9990028	FINAL PLANNING AND IMPLEMENTATION OF HIGH PRIORITY SUPP	Snake		150
9990030	CRITICAL STOCK CHINOOK SALMON GAMETE PRESERVATION	Snake		211
9990031	PORTABLE CHINOOK SALMON ADULT COLLECTION/HOLDING ANE	Snake		411
9990034	COMPREHENSIVE ANADROMOUS SALMONID SYSTEM MONITORIN	Snake		300
9990035	ASSISTANCE FOR SHOSHONE-BANNOCK TRIBES' SNAKE RIVER P	Snake		100
		Subtotal	3,644	18,487
8343500	UMATILLA HATCHERY SATELLITE FACILITIES O&M	Umatilla	334	
8343600	UMATILLA PASSAGE O&M	Umatilla	281	
8403300	UMATILLA HATCHERY	Umatilla	908	
8403306	UMATILLA HATCHERY - WATER SUPPLY	Umatilla	468	
8710001	UMATILLA RIVER BASIN ANADROMOUS FISH HABITAT ENHANCEM	Umatilla	293	
8710002	UMATILLA HABITAT IMPROVEMENT (ODFW)	Umatilla	190	
8802200	UMATILLA RIVER BASIN TRAP AND HAUL PROGRAM	Umatilla	382	
8902401	EVAL UMATILLA BASIN PRJ - 3-MILE/WEID CANAL SCR	Umatilla	240	
8902700	POWER/REPAY O&M FOR USBR CPR PUMPING PROJ	Umatilla	271	
9000500	UMATILLA HATCHERY - MONITORING/EVAL PRJCTS	Umatilla	544	
9000501	UMATILLA BASIN NATURAL PRODUCTION M&E	Umatilla	615	
9101400	UMATILLA SATELLITES - PLNG,SITING,DESIGN,CNSTR	Umatilla	3,016	
9406500	PATAHA CREEK MODEL WATERSHED PROJECT	Umatilla	19	
9990009	UMATILLA RIVER ADULT FISH PASSAGE AT FEED CANAL DAM	Umatilla		250
		Subtotal	7,560	250
9990069	JUVENILE SCREENS AND SMOLT TRAPS AT WALLA WALLA RIVER	Walla Walla	90	
9990070	RIPARIAN AND FISH HABITAT ENHANCEMENT - WALLA WALLA BA	Walla Walla		150
9990071	ANADROMOUS FISH PASSAGE IMPROVEMENT AT WALLA WALLA I	Walla Walla	100	
		Subtotal	190	150
9202602	EASTERN WA MODEL WATERSHED DEVELOPMENT PLN PHASE	Washington	115	
9401800	WASHINGTON MODEL WATERSHED HABITAT PROJECTS	Washington		250
		Subtotal	115	250
8506200	PASSAGE IMPROVEMENT EVALUATION	Yakima	281	
8607500	LITTLE NACHES PASSAGE	Yakima	2	
8811500	YAKIMA HATCHERY - CONSTRUCTION	Yakima	4,114	
8812000	YAKIMA NATURAL PRODUCTION & ENHANCEMENT PROGRAM	Yakima	1,403	
8908200	YAKIMA HATCHERY EXPERIMENTAL DESIGN - WDF	Yakima	600	
8910500	YAKIMA - SPECIES INTERACTION STUDY	Yakima	300	
9006900	YAKIMA HATCHERY - FINAL DESIGN	Yakima	468	
9105500	SUPPLEMENTATION FISH QUALITY (NATURES)	Yakima	281	

* Recommended for funding in FY96 from BPA's F&W budget

** Combination of ESA and Other projects, defined as:

ESA: Recommended for funding in FY96 from BPA's ESA budget

Other: Not recommended for funding in FY96 from BPA's F&W budget at this time

Anadromous Fish Projects Listed by Location

Appendix C.2

Proj #	Title	Location	96 Estimate*	ESA/Other**
9105700	YAKIMA PHASE 2 SCREEN FABRICATION	Yakima	300	
9107500	YAKIMA PHASE II SCREENS - CONSTRUCTION	Yakima	1,547	
9200900	YAKIMA SCREENS - PHASE II - O & M	Yakima	75	
9201400	YAKIMA HABITAT ASSESSMENT AND IMPROVEMENT	Yakima	234	
9202200	WILD SMOLT BEHAVIOR/PHYSIOLOGY (ESA)	Yakima	346	
9405900	BPA ENVIRONMENTAL EDUCATION TRAINING/YAKIMA RIVER BASI	Yakima	90	
9503200	YAKIMA/NELSON SPRINGS FACILITIES JANITORIAL SERVIC	Yakima	7	
9503300	O&M YAKIMA R BASIN FISH PROTECTION, MIT & ENHANCE	Yakima	12	
9506200	YAKIMA/KLICKITAT FISHERIES PROJ ADAPTIVE MGMT	Yakima	748	
9506300	YAKIMA/KLICKITAT MONITORING AND EVALUATION PROGRAM	Yakima	1,449	
9990006	FISH PASSAGE AND SCREENING FOR TOPPENISH CREEK DIVERS	Yakima		295
		Subtotal	12,254	295
		ANADROMOUS TOTAL	54,341	41,928

* Recommended for funding in FY96 from BPA's F&W budget

** Combination of ESA and Other projects, defined as:

ESA: Recommended for funding in FY96 from BPA's ESA budget

Other: Not recommended for funding in FY96 from BPA's F&W budget at this time

Anadromous Fish Projects Listed by Sponsor

Appendix C.3

Proj #	Title	Sponsor	96 Estimate*	ESA/Other**
8810800	SYSTEM MONITORING AND EVALUATION PROGRAM (SMEP)			2,000
9006100	FUNGAL INFECTION: SPRING/SUMMER CHINOOK SALMON		0	
9106600	ICE HARBOR/LOWER GRANITE TRAPPING (CHF) (ESA)			
9990020	REDUCE SHAD IMPACTS ABOVE BONNEVILLE			
9990021	SUPPLEMENTATION PLANS FOR UNLISTED SALMON			
9990023	STEELHEAD ACCLIMATION PONDS			
9990024	FEASIBILITY OF FALL CHINOOK ABOVE HELLS CANYON			
9990025	STUDY GENETICS OF LIFE HISTORY VARIATION			
9990026	STUDY IN/OUT BREEDING DEPRESSION			
		Subtotal	0	2,000
8506200	PASSAGE IMPROVEMENT EVALUATION	Battelle	281	
8611800	FISH AND WILDLIFE PROGRAM ASSISTANCE EFFORT	Battelle		0
9207100	ASSESS TECH TO IMPROVE MEASRMNT CAPABILITIES (M&E)	Battelle	0	
9301200	EVALUATION OF CARRYING CAPACITY	Battelle	94	
		Subtotal	374	0
8812400	F & W PROGRAM INTERNAL SUPPORT ACTIVITIES	BPA	0	
9301100	REGIONAL HABITAT EDUCATION SUPPORT	BPA	12	
9301400	NEW AMENDED PROGRAM PHASE III (CAPITAL)	BPA		1,000
		Subtotal	12	1,000
8906200	COLUMBIA BASIN FISH AND WILDLIFE AUTHORITY	CBFWF	395	
8907201	SCIENTIFIC REVIEW GROUP SUPPORT	CBFWF	450	
9202800	REGIONAL FISH SCREENING	CBFWF	164	
9990011	FERC/FEDERAL TRIBUTARY PROJECT COORDINATION	CBFWF		100
9990014	DEVELOP SUBREGIONAL PLANS	CBFWF		400
9990015	EVALUATION OF PROGRAM PROGRESS/ANNUAL RESULTS SYMPOSIUM	CBFWF		250
9990017	UPDATE SUBBASIN PLANS	CBFWF		200
		Subtotal	1,009	950
9502100	OKANOGAN WATERSHED PLANNING	CCT		125
9990018	OMAK CREEK ANADROMOUS FISH REINTRODUCTION	CCT		75
		Subtotal		200
8811500	YAKIMA HATCHERY - CONSTRUCTION	CH2M H	4,114	
9006900	YAKIMA HATCHERY - FINAL DESIGN	CH2M H	468	
		Subtotal	4,582	
9104000	BONNEVILLE DAM JUVENILE FISH SAMPLING FACILITY	COE		570
9106400	PIT TAG FACILITIES	COE		0
9204100	FISH PASSAGE EVALUATIONS	COE	241	
		Subtotal	241	570
9401800	WASHINGTON MODEL WATERSHED HABITAT PROJECTS	Cons Districts		250

* Recommended for funding in FY96 from BPA's F&W budget

** Combination of ESA and Other projects, defined as:

ESA: Recommended for funding in FY96 from BPA's ESA budget

Other: Not recommended for funding in FY96 from BPA's F&W budget at this time

Anadromous Fish Projects Listed by Sponsor

Appendix C.3

Proj #	Title	Sponsor	96 Estimate*	ESA/Other**
		Subtotal		250
9206500	F&W PUBLIC EDUCATION PROJECT	Consultant	6	
9402300	SELECTIVE HARVEST	Consultant		500
9500200	IHOT HATCHERY AUDITS	Consultant	281	
9503200	YAKIMA/NELSON SPRINGS FACILITIES JANITORIAL SERVIC	Consultant	7	
		Subtotal	293	500
9990002	MONITOR SEDIMENT LEVELS IN GRANDE RONDE/JOHN DAY RIVERS	CRITFC		50
9990003	TERMINAL AREA ESCAPEMENT ESTIMATION	CRITFC		300
9990004	JOHN DAY RIVER WATER TEMPERATURE DATABASE	CRITFC		114
9990005	MAINSTEM COLUMBIA/SNAKE RIVER VIDEO FISH COUNTING	CRITFC		198
		Subtotal		662
8343500	UMATILLA HATCHERY SATELLITE FACILITIES O&M	CTUIR	334	
8710001	UMATILLA RIVER BASIN ANADROMOUS FISH HABITAT ENHANCEMENT	CTUIR	293	
8802200	UMATILLA RIVER BASIN TRAP AND HAUL PROGRAM	CTUIR	382	
8805302	NE ORE OUTPLANTING FACILITIES MASTER PLAN - CTUIR	CTUIR	0	
9000501	UMATILLA BASIN NATURAL PRODUCTION M&E	CTUIR	615	
9402600	PACIFIC LAMPREY RESEARCH AND RESTORATION PROJECT	CTUIR	335	
9990069	JUVENILE SCREENS AND SMOLT TRAPS AT WALLA WALLA RIVER	CTUIR	90	
9990070	RIPARIAN AND FISH HABITAT ENHANCEMENT - WALLA WALLA BASIN	CTUIR		150
9990071	ANADROMOUS FISH PASSAGE IMPROVEMENT AT WALLA WALLA IRRIGATION	CTUIR	100	
		Subtotal	2,149	150
9405600	WARM SPRINGS HABITAT ENHANCEMENT	CTWS		0
9990019	LIVESTOCK MANAGEMENT PROJECT	CTWS		61
		Subtotal		61
8805303	HOOD RIVER PRODUCTION PROGRAM	CTWS, ODFW	374	
		Subtotal	374	
9990027	SALMON CORPS	DOE, CRITFC		300
		Subtotal		300
9304400	EDF WATER ACQUISITION PILOT PROJECT	EDF		125
		Subtotal		125
9405900	BPA ENVIRONMENTAL EDUCATION TRAINING/YAKIMA RIVER BASIN	ESD 105	90	
		Subtotal	90	
9990009	UMATILLA RIVER ADULT FISH PASSAGE AT FEED CANAL DAM	FSOC		250
9990010	COLUMBIA RIVER BASIN TRIBUTARY ADULT FISH PASSAGE	FSOC		500
		Subtotal		750
9402700	GRANDE RONDE MODEL WATERSHED HABITAT PROJECTS	GRMW	260	650
		Subtotal	260	650

* Recommended for funding in FY96 from BPA's F&W budget

** Combination of ESA and Other projects, defined as:

ESA: Recommended for funding in FY96 from BPA's ESA budget

Other: Not recommended for funding in FY96 from BPA's F&W budget at this time

Anadromous Fish Projects Listed by Sponsor

Appendix C.3

Proj #	Title	Sponsor	96 Estimate*	ESA/Other**
9104100	IDAHO WATER RENTAL - FLOWS	ID Power		1,000
		Subtotal		1,000
9202603	MODEL WATERSHED STUDIES - LEMHI RIVER BASIN	ID Soil	141	
9990037	CLEARWATER BASIN SUBWATERSHED PRIORITIZATION	ID Soil		50
		Subtotal	141	50
8332300	SMOLT CONDITION & ARRIVAL TIMING AT LWR GRANITE	IDFG	318	
8909800	EVAL OF SUMMLMTG SALMON/CLRWTR RV W/ HATCH ST	IDFG	791	
9107200	REDFISH LAKE SOCKEYE REARING AND TRAPPING (ESA)	IDFG	612	
9107300	IDAHO NATURAL PRODUCTION MONITORING/EVAL 83-7(ESA)	IDFG	650	
9401500	IDAHO FISH SCREENING IMPROVEMENT	IDFG	701	
		Subtotal	3,072	
9403000	RASP IN GRAND RONDE MODEL WATERSHED	Mobrand	0	
9404600	ECOSYSTEM MANAGEMENT	Mobrand	183	
		Subtotal	183	
9401700	IDAHO MODEL WATERSHED HABITAT PROJECTS	Model Watershed	23	
		Subtotal	23	
8200300	PREDATION/DEVELOPMENT OF PREY PROTECTION	NBS	404	
8740100	TRAVEL TIME AND SURVIVAL SMOLT PHYSIOLOGY	NBS	465	285
9005200	PERF/STOCK PROD IMPACTS OF HATCHERY SUPPL	NBS	300	
9007800	SQUAWFISH MANAGEMENT (SUPPORT)	NBS	400	
9102900	LIFE HISTORY OF FALL CHIN IN COL R (ESA)	NBS	1,053	450
		Subtotal	2,622	735
9203800	WATERSHED EDUCATION INTERACTIVE DISPLAY FOR OMSI	New Project	0	
9401600	SUPPLEMENTATION PROJECTS	New Project		350
9504100	COST SHARE 500 KAF UPPER SNAKE	New Project		2,000
9504200	INCREASED PREDATION MEASURES	New Project		0
9504300	TRANSPORTATION EVALUATION	New Project		
9504400	COST SHARE BIOLOGICAL ANALYSIS CENTER	New Project		250
9504500	COST SHARE IMPROVED HARVEST ESC. MODEL	New Project		100
9504600	EXPENSES FOR UPDATING SUBBASIN PLANS	New Project		100
9504700	IRRIGATION DIVERSION SCREENING (FED. LANDS)	New Project	0	3,000
9504800	EVALUATE HANFORD - K BASIN PRODUCTION	New Project		500
9504900	EMERGENCY SUPPLEMENTATION ACTIONS	New Project		2,000
9505100	SUBBASIN PRODUCTION PROJECTS	New Project		5,000
9505200	EMERGENCY SUPPLEMENTATION FACILITIES	New Project		5,000
		Subtotal	0	18,300
8331900	NEW FISH TAG SYSTEM	NMFS	430	
8401400	SMOLT MONITORING AT FEDERAL DAMS	NMFS	655	

* Recommended for funding in FY96 from BPA's F&W budget

** Combination of ESA and Other projects, defined as:

ESA: Recommended for funding in FY96 from BPA's ESA budget

Other: Not recommended for funding in FY96 from BPA's F&W budget at this time

Anadromous Fish Projects Listed by Sponsor

Appendix C.3

Proj #	Title	Sponsor	96 Estimate*	ESA/Other**
8909600	GENETIC MONT/EVAL PROG FOR SALM/STLHD	NMFS	232	
9102800	PIT TAGGING WILD CHINOOK	NMFS	313	
9105500	SUPPLEMENTATION FISH QUALITY (NATURES)	NMFS	281	
9202200	WILD SMOLT BEHAVIOR/PHYSIOLOGY (ESA)	NMFS	346	
9204000	REDFISH LAKE SOCKEYE BROODSTOCK REARING/RESEARCH	NMFS	429	
9302900	SURVIVAL EST FOR PASSAGE THROUGH DAMS/RESERVOIRS	NMFS	748	
9305600	ASSESSMENT OF CAPTIVE SALMONID BROODSTOCK TECH	NMFS	979	
9403100	ANALYTICAL COORDINATION WORKGROUP - PATH	NMFS		793
		Subtotal	4,412	793
9501000	F&W NEWSLETTER DEVELOPMENT GRANT	Noe	0	
		Subtotal	0	
8335000	NEZ PERCE TRIBAL HATCHERY	NPT	3,340	
8805301	NE ORE OUTPLANTING FACILITIES MASTER PLAN - NEZ PERCE	NPT	400	
8909802	SALMON SUPPLE STUDIES IN ID RV - NEZ PERCE TRB	NPT	145	
9303600	HAYSFORK GLORYHOLE	NPT	30	
9403400	UPPER CLEARWATER - ASSESSING SUMMER/FALL CHINOOK	NPT	226	
9403900	WALLOWA BASIN PROJECT PLANNING	NPT	50	
9990030	CRITICAL STOCK CHINOOK SALMON GAMETE PRESERVATION	NPT		211
9990031	PORTABLE CHINOOK SALMON ADULT COLLECTION/HOLDING AND JUVENILE	NPT		411
9990032	SUMMER CHINOOK SALMON REARING FACILITIES IN JOHNSON CREEK	NPT		400
9990033	SELWAY RIVER CHINOOK SALMON RESTORATION	NPT		417
9990034	COMPREHENSIVE ANADROMOUS SALMONID SYSTEM MONITORING	NPT		300
		Subtotal	4,191	1,739
8402100	MAINSTEM, MIDDLE FORK, JOHN DAY RIVER	ODFW	297	
8402500	WALLOWA CREEK, GRANDE RONDE RIVER, OREGON (ODFW)	ODFW	161	
8403300	UMATILLA HATCHERY	ODFW	908	
8612400	INSP SERV FOR LITTLE FALL CREEK PASS RE:86-090	ODFW	4	
8710002	UMATILLA HABITAT IMPROVEMENT (ODFW)	ODFW	190	
8805304	NE ORE OUTPLANTING FACILITIES MASTER PLAN - ODFW	ODFW	394	
8816000	BIOENGR EVAL OF RETROFITTED OXY SUPPLEMENTATION	ODFW	98	
8902401	EVAL UMATILLA BASIN PRJ - 3-MILE/WEID CANAL SCR	ODFW	240	
8906900	ANN CD WIRE TAG PROG-MISSING PROD OR HTC (ODFW)	ODFW	125	
9000500	UMATILLA HATCHERY - MONITORING/EVAL PRJCTS	ODFW	544	
9301900	DESIGN/CONSTRUCT POWERDALE DAM FAC (ODFW)	ODFW	0	
9304000	FIFTEENMILE CREEK HABITAT IMPROVEMENT	ODFW	229	
9304500	BUCK HOLLOW WATERSHED ENHANCEMENT (ODFW)	ODFW	53	
9306000	COLUMBIA RIVER TERMINAL FISHERIES RESEARCH PROJECT	ODFW	786	
9306600	OREGON FISH SCREENS PROJECT	ODFW	250	
9404200	TROUT CREEK OPERATION & MAINTENANCE	ODFW	187	

* Recommended for funding in FY96 from BPA's F&W budget

** Combination of ESA and Other projects, defined as:

ESA: Recommended for funding in FY96 from BPA's ESA budget

Other: Not recommended for funding in FY96 from BPA's F&W budget at this time

Anadromous Fish Projects Listed by Sponsor

Appendix C.3

Proj #	Title	Sponsor	96 Estimate*	ESA/Other**
9990001	WILLAMETTE FALLS FISHWAY RESTORATION AND MODERNIZATION	ODFW		2,125
		Subtotal	4,466	2,125
9303701	TECHNICAL ASSISTANCE WITH THE LIFE CYCLE MODEL	Paulsen		53
		Subtotal		53
9202601	GRAND RONDE MODEL WATERSHED CHARTER DEVELOPMENT	PNRS	280	
9307000	GRAND RONDE,IMNAHA,JOHN DAY RVR TELEMETRY TRACKING	PNRS	65	
		Subtotal	345	
8902700	POWER/REPAY O&M FOR USBR CPR PUMPING PROJ	PPL	271	
		Subtotal	271	
8201300	CODED-WIRE TAG RECOVERY	PSMFC	1,161	
8712700	SMOLT MONITORING BY NON-FEDERAL ENTITIES	PSMFC	1,237	
8810801	COORDINATED INFORMATION SYSTEM (CIS)	PSMFC	792	
8810803	NORTHWEST ENVIRONMENTAL DATABASE	PSMFC		1,200
9007700	SQUAWFISH MANAGEMENT	PSMFC	3,843	
9008000	COLUMBIA BASIN PIT-TAG INFORMATION SYSTEM (PTAGIS)	PSMFC	983	
9204300	INTEGRATED HATCHERY OPERATIONS TEAM (EIP)	PSMFC	465	
9403300	FISH PASSAGE CENTER	PSMFC	865	
		Subtotal	9,345	1,200
8909803	SALMON SUPPLE IN ID RIVERS - SHOSHONE-BANNOCK TRB	SBT	121	
9107100	SNAKE RIVER SOCKEYE SALMON HABITAT (ESA)	SBT	408	
9405000	SALMON RIVER HABITAT O&M	SBT	253	
9990028	FINAL PLANNING AND IMPLEMENTATION OF HIGH PRIORITY SUPPLEMENTA	SBT		150
9990029	PANTHER CREEK TRAP AND HAUL OPERATION	SBT		900
9990035	ASSISTANCE FOR SHOSHONE-BANNOCK TRIBES' SNAKE RIVER POLICY	SBT		100
		Subtotal	782	1,150
9990012	SALMON RIVER FISH PASSAGE/IRRIGATION IMPROVEMENT	SBT/FSOC		1,300
		Subtotal		1,300
9305500	WATER PURCHASE ACQUISITION/LEASE FEE/PURCHASE OPT	Skyline Farm		3,600
		Subtotal		3,600
9301300	TECH ASSISTANCE/REVIEW	SP Cramer	0	
		Subtotal	0	
9406500	PATAHA CREEK MODEL WATERSHED PROJECT	SWCD	19	
		Subtotal	19	
9009300	GENETIC ANALYSES OF ONCORHYNCHUS NERKA (ESA)	Univ/ID		0
		Subtotal		0
8741302	ANALYZE HISTORIC DATA FOR JUVENILE/ADULT PROD	Univ/WA	0	
8910700	EPIDEMIOLOGICAL SURVIVAL METHOD	Univ/WA	154	

* Recommended for funding in FY96 from BPA's F&W budget

** Combination of ESA and Other projects, defined as:

ESA: Recommended for funding in FY96 from BPA's ESA budget

Other: Not recommended for funding in FY96 from BPA's F&W budget at this time

Anadromous Fish Projects Listed by Sponsor

Appendix C.3

Proj #	Title	Sponsor	96 Estimate*	ESA/Other**
8910800	COLUMBIA RIVER SALMON PASSAGE MODEL	Univ/WA		900
9105100	ANALYSIS OF REL OF RIVERFLOW TO TRAVEL TIME (ESA)	Univ/WA		0
		Subtotal	154	900
8343600	UMATILLA PASSAGE O&M	USBR	281	
9107500	YAKIMA PHASE II SCREENS - CONSTRUCTION	USBR	1,547	
		Subtotal	1,828	
8402200	MAINSTEM AND UPPER JOHN DAY RIVER	USFS	19	
8402300	CAMAS CREEK, IDAHO	USFS	7	
8402400	MARSH / ELK / UPPER SALMON RIVER, IDAHO	USFS	47	
8607500	LITTLE NACHES PASSAGE	USFS	2	
9203200	LIFE CYCLE MODEL DEVEL/APPLIC TO SSP IN SNAKE RV	USFS		50
9300300	SHERMAN PASS SCENIC BYWAY VISITORS CENTER	USFS	5	
9303800	N FK JOHN DAY ANADR FISH HABITAT ENHCMT - USFS	USFS	53	
		Subtotal	133	50
8906500	ANN CD WIRE TAG PROG-MISSING PROD OR/WA (USFWS) PLUS FISH MARKI	USFWS	249	
8909801	SALM SUPPLE STUDIES IN ID RV - USFWS	USFWS	91	
9306700	COMPREHENSIVE ANALYSIS OF PRODUCTION (CEA)	USFWS	94	
9990006	FISH PASSAGE AND SCREENING FOR TOPPENISH CREEK DIVERSION	USFWS		295
		Subtotal	433	295
9990008	M & E OF SNAKE RIVER FALL CHINOOK SUPPLEMENTATION UPSTREAM OF I	USFWS, WDFW		65
		Subtotal		65
9304300	FLOW VOLUME PROVISIONS/SUPPORT	Various		75
9401300	ANNUAL PROJECTS REVIEW	Various		10
9999999	LAW ENFORCEMENT GENERAL	Various	3,317	
		Subtotal	3,317	85
8403306	UMATILLA HATCHERY - WATER SUPPLY	Watson	468	
9101400	UMATILLA SATELLITES - PLNG,SITING,DESIGN,CNSTR	Watson	3,016	
9300800	ALLOWABLE GAS SUPERSATURATION AT DAMS	Watson		0
		Subtotal	3,483	0
8816300	EFFECTS OF CODED WIRE TAGS ON SPRING CHINOOK	WDFW	174	
8903000	EVAL OF PRE-REL TEMP ACCLIMATION AT GRAND WATER HTCH	WDFW	34	
8906600	ANN CD WIRE TAG PROG-MISSING PROD WA HTCH (WDF)	WDFW	294	
8908200	YAKIMA HATCHERY EXPERIMENTAL DESIGN - WDF	WDFW	600	
8910500	YAKIMA - SPECIES INTERACTION STUDY	WDFW	300	
9105700	YAKIMA PHASE 2 SCREEN FABRICATION	WDFW	300	
9200900	YAKIMA SCREENS - PHASE II - O & M	WDFW	75	
9207300	DEVELOPMENT OF LASER-MARKING SALMONIDS	WDFW	0	320
		Subtotal	1,777	320

* Recommended for funding in FY96 from BPA's F&W budget

** Combination of ESA and Other projects, defined as:

ESA: Recommended for funding in FY96 from BPA's ESA budget

Other: Not recommended for funding in FY96 from BPA's F&W budget at this time

Anadromous Fish Projects Listed by Sponsor

Appendix C.3

Proj #	Title	Sponsor	96 Estimate*	ESA/Other**
9202602	EASTERN WA MODEL WATERSHED DEVELOPMENT PLN PHASE	WS Cons Cm	115	
		Subtotal	115	
8812000	YAKIMA NATURAL PRODUCTION & ENHANCEMENT PROGRAM	YIN	1,403	
9201400	YAKIMA HABITAT ASSESSMENT AND IMPROVEMENT	YIN	234	
9503300	O&M YAKIMA R BASIN FISH PROTECTION, MIT & ENHANCE	YIN	12	
9506200	YAKIMA/KLICKITAT FISHERIES PROJ ADAPTIVE MGMT	YIN	748	
9506300	YAKIMA/KLICKITAT MONITORING AND EVALUATION PROGRAM	YIN	1,449	
		Subtotal	3,846	
ANADROMOUS TOTAL			54,341	41,928

* Recommended for funding in FY96 from BPA's F&W budget

** Combination of ESA and Other projects, defined as:

ESA: Recommended for funding in FY96 from BPA's ESA budget

Other: Not recommended for funding in FY96 from BPA's F&W budget at this time

Anadromous Fish Projects Listed by Program Area

Appendix C.4

Project #	Title	Sponsor	% Estimate**	ESA***	Other****
Enforcement Projects					
Enforcement					
9999999	LAW ENFORCEMENT GENERAL	Various	3,317		
		Subtotal	3,317		
		Enforcement Total	3,317		
Fish Propagation Projects					
Clearwater/Nez Perce					
8335000	NEZ PERCE TRIBAL HATCHERY	NPT	3,340		
9990031	PORTABLE CHINOOK SALMON ADULT COLLECTION/HOLDING AND J	NPT			411
9990033	SELWAY RIVER CHINOOK SALMON RESTORATION	NPT			417
9990034	COMPREHENSIVE ANADROMOUS SALMONID SYSTEM MONITORING	NPT			300
		Subtotal	3,340		1,128
Umatilla					
8343500	UMATILLA HATCHERY SATELLITE FACILITIES O&M	CTUIR	334		
8403300	UMATILLA HATCHERY	ODFW	908		
9101400	UMATILLA SATELLITES - PLNG,SITING,DESIGN,CNSTR	Watson	3,016		
8403306	UMATILLA HATCHERY - WATER SUPPLY	Watson	468		
8802200	UMATILLA RIVER BASIN TRAP AND HAUL PROGRAM	CTUIR	382		
9000501	UMATILLA BASIN NATURAL PRODUCTION M&E	CTUIR	615		
9000500	UMATILLA HATCHERY - MONITORING/EVAL PRJCTS	ODFW	544		
		Subtotal	6,266		
Yakima					
8812000	YAKIMA NATURAL PRODUCTION & ENHANCEMENT PROGRAM	YIN	1,403		
8811500	YAKIMA HATCHERY - CONSTRUCTION	CH2M H	4,114		
9506300	YAKIMA/KLICKITAT MONITORING AND EVALUATION PROGRAM	YIN	1,449		
8908200	YAKIMA HATCHERY EXPERIMENTAL DESIGN - WDF	WDFW	600		
9506200	YAKIMA/KLICKITAT FISHERIES PROJ ADAPTIVE MGMT	YIN	748		
9006900	YAKIMA HATCHERY - FINAL DESIGN	CH2M H	468		
8910500	YAKIMA - SPECIES INTERACTION STUDY	WDFW	300		
9503300	O&M YAKIMA R BASIN FISH PROTECTION, MIT & ENHANCE	YIN	12		
8903000	EVAL OF PRE-REL TEMP ACCLIMATION AT GRAND WATER HTCH	WDFW	34		
9503200	YAKIMA/NELSON SPRINGS FACILITIES JANITORIAL SERVIC	Consultant	7		
		Subtotal	9,134		
Grande Ronde/NE OR					
8909600	GENETIC MONT/EVAL PROG FOR SALM/STLHD	NMFS	232		
8805304	NE ORE OUTPLANTING FACILITIES MASTER PLAN - ODFW	ODFW	394		

* Projects with long-term legal agreements or or Endangered Species Act mandated

** Recommended for funding in FY96 from BPA's F&W budget

*** Recommended for funding in FY96 from BPA's ESA budget

**** Not recommended for funding in FY96 from BPA's F&W budget at this time

Anadromous Fish Projects Listed by Program Area

Appendix C.4

Project #	Title	Sponsor	96 Estimate**	ESA***	Other****
8805301	NE ORE OUTPLANTING FACILITIES MASTER PLAN - NEZ PERCE	NPT	400		
8805302	NE ORE OUTPLANTING FACILITIES MASTER PLAN - CTUIR	CTUIR	0		
9307000	GRAND RONDE,IMNAHA,JOHN DAY RVR TELEMETRY TRACKING	PNRS	65		
Subtotal			1,091		
Hood/Deschutes					
8805303	HOOD RIVER PRODUCTION PROGRAM	CTWS, ODFW	374		
9301900	DESIGN/CONSTRUCT POWERDALE DAM FAC (ODFW)	ODFW	0		
Subtotal			374		
Redfish Lake Sockeye					
* 9107100	SNAKE RIVER SOCKEYE SALMON HABITAT (ESA)	SBT	408		
* 9107200	REDFISH LAKE SOCKEYE REARING AND TRAPPING (ESA)	IDFG	612		
* 9204000	REDFISH LAKE SOCKEYE BROODSTOCK REARING/RESEARCH	NMFS	429		
9009300	GENETIC ANALYSES OF ONCORHYNCHUS NERKA (ESA)	Univ/ID		0	
Subtotal			1,449	0	
CWT Marking					
* 8201300	CODED-WIRE TAG RECOVERY	PSMFC	1,161		
* 8906500	ANN CD WIRE TAG PROG-MISSING PROD OR/WA (USFWS) PLUS FIS	USFWS	249		
* 8906900	ANN CD WIRE TAG PROG-MISSING PROD OR HTC (ODFW)	ODFW	125		
* 8906600	ANN CD WIRE TAG PROG-MISSING PROD WA HTCH (WDF)	WDFW	294		
Subtotal			1,828		
Supplementation Research					
8909800	EVAL OF SUMMLMTG SALMON/CLRWTR RV W/ HATCH ST	IDFG	791		
9403400	UPPER CLEARWATER - ASSESSING SUMMER/FALL CHINOOK	NPT	226		
8909802	SALMON SUPPLE STUDIES IN ID RV - NEZ PERCE TRB	NPT	145		
8909801	SALM SUPPLE STUDIES IN ID RV - USFWS	USFWS	91		
8909803	SALMON SUPPLE IN ID RIVERS - SHOSHONE-BANNOCK TRB	SBT	121		
9105500	SUPPLEMENTATION FISH QUALITY (NATURES)	NMFS	281		
9990008	M & E OF SNAKE RIVER FALL CHINOOK SUPPLEMENTATION UPSTR	USFWS, WDF			65
9005200	PERF/STOCK PROD IMPACTS OF HATCHERY SUPPL	NBS	300		
9990021	SUPPLEMENTATION PLANS FOR UNLISTED SALMON				
9990023	STEELHEAD ACCLIMATION PONDS				
Subtotal			1,954		65
Other Research/Planning					
9990030	CRITICAL STOCK CHINOOK SALMON GAMETE PRESERVATION	NPT			211
9990003	TERMINAL AREA ESCAPEMENT ESTIMATION	CRITFC			300
9305600	ASSESSMENT OF CAPTIVE SALMONID BROODSTOCK TECH	NMFS	979		
9306000	COLUMBIA RIVER TERMINAL FISHERIES RESEARCH PROJECT	ODFW	786		

* Projects with long-term legal agreements or or Endangered Species Act mandated

** Recommended for funding in FY96 from BPA's F&W budget

*** Recommended for funding in FY96 from BPA's ESA budget

**** Not recommended for funding in FY96 from BPA's F&W budget at this time

Anadromous Fish Projects Listed by Program Area

Appendix C.4

Project #	Title	Sponsor	96 Estimate**	ESA***	Other****
9204300	INTEGRATED HATCHERY OPERATIONS TEAM (EIP)	PSMFC	465		
9202200	WILD SMOLT BEHAVIOR/PHYSIOLOGY (ESA)	NMFS	346		
9107300	IDAHO NATURAL PRODUCTION MONITORING/EVAL 83-7(ESA)	IDFG	650		
9500200	IHOT HATCHERY AUDITS	Consultant	281		
9306700	COMPREHENSIVE ANALYSIS OF PRODUCTION (CEA)	USFWS	94		
9990024	FEASIBILITY OF FALL CHINOOK ABOVE HELLS CANYON				
9404600	ECOSYSTEM MANAGEMENT	Mobrand	183		
* 9207300	DEVELOPMENT OF LASER-MARKING SALMONIDS	WDFW	0	320	
9504800	EVALUATE HANFORD - K BASIN PRODUCTION	New Project			500
9402300	SELECTIVE HARVEST	Consultant			500
8816000	BIOENGR EVAL OF RETROFITTED OXY SUPPLEMENTATION	ODFW	98		
8816300	EFFECTS OF CODED WIRE TAGS ON SPRING CHINOOK	WDFW	174		
9990026	STUDY IN/OUT BREEDING DEPRESSION				
9990025	STUDY GENETICS OF LIFE HISTORY VARIATION				
9006100	FUNGAL INFECTION: SPRING/SUMMER CHINOOK SALMON		0		
		Subtotal	4,055	320	1,511

Production Placeholders

9504900	EMERGENCY SUPPLEMENTATION ACTIONS	New Project			2,000
9505200	EMERGENCY SUPPLEMENTATION FACILITIES	New Project			5,000
9990032	SUMMER CHINOOK SALMON REARING FACILITIES IN JOHNSON CRI	NPT			400
9505100	SUBBASIN PRODUCTION PROJECTS	New Project			5,000
9990028	FINAL PLANNING AND IMPLEMENTATION OF HIGH PRIORITY SUPPL	SBT			150
9401600	SUPPLEMENTATION PROJECTS	New Project			350
		Subtotal			12,900
		Fish Propagation Total	29,492	320	15,604

Habitat/Tributary Passage Projects

Clearwater

9303600	HAYSFORK GLORYHOLE	NPT	30		
9990037	CLEARWATER BASIN SUBWATERSHED PRIORITIZATION	ID Soil			50
		Subtotal	30		50

Columbia River Basin

9990010	COLUMBIA RIVER BASIN TRIBUTARY ADULT FISH PASSAGE	FSOC			500
9202800	REGIONAL FISH SCREENING	CBFWF	164		
9301400	NEW AMENDED PROGRAM PHASE III (CAPITAL)	BPA			1,000
		Subtotal	164		1,500

Deschutes

9405600	WARM SPRINGS HABITAT ENHANCEMENT	CTWS			0
---------	----------------------------------	------	--	--	---

* Projects with long-term legal agreements or or Endangered Species Act mandated

** Recommended for funding in FY96 from BPA's F&W budget

*** Recommended for funding in FY96 from BPA's ESA budget

**** Not recommended for funding in FY96 from BPA's F&W budget at this time

Anadromous Fish Projects Listed by Program Area

Appendix C.4

Project #	Title	Sponsor	96 Estimate**	ESA***	Other****
9404200	TROUT CREEK OPERATION & MAINTENANCE	ODFW	187		
9990019	LIVESTOCK MANAGEMENT PROJECT	CTWS			61
9304500	BUCK HOLLOW WATERSHED ENHANCEMENT (ODFW)	ODFW	53		
		Subtotal	240		61
Fifteenmile					
9304000	FIFTEENMILE CREEK HABITAT IMPROVEMENT	ODFW	229		
		Subtotal	229		
Grande Ronde/Imnaha					
8402500	WALLOWA CREEK, GRANDE RONDE RIVER, OREGON (ODFW)	ODFW	161		
9402700	GRANDE RONDE MODEL WATERSHED HABITAT PROJECTS	GRMW	260		650
9202601	GRAND RONDE MODEL WATERSHED CHARTER DEVELOPMENT	PNRS	280		
9403900	WALLOWA BASIN PROJECT PLANNING	NPT	50		
9990002	MONITOR SEDIMENT LEVELS IN GRANDE RONDE/JOHN DAY RIVER:	CRITFC			50
9403000	RASP IN GRAND RONDE MODEL WATERSHED	Mobrand	0		
		Subtotal	751		700
John Day					
8402100	MAINSTEM, MIDDLE FORK, JOHN DAY RIVER	ODFW	297		
9303800	N FK JOHN DAY ANADR FISH HABITAT ENHCMT - USFS	USFS	53		
9990004	JOHN DAY RIVER WATER TEMPERATURE DATABASE	CRITFC			114
8402200	MAINSTEM AND UPPER JOHN DAY RIVER	USFS	19		
		Subtotal	369		114
Juvenile Trib. Passage					
9401500	IDAHO FISH SCREENING IMPROVEMENT	IDFG	701		
9105700	YAKIMA PHASE 2 SCREEN FABRICATION	WDFW	300		
9107500	YAKIMA PHASE II SCREENS - CONSTRUCTION	USBR	1,547		
9306600	OREGON FISH SCREENS PROJECT	ODFW	250		
9504700	IRRIGATION DIVERSION SCREENING (FED. LANDS)	New Project	0	3,000	
	(Intended to supplement Mitchell Act funding at FY95 levels.)	Subtotal	2,798	3,000	
Mid Columbia					
9990018	OMAK CREEK ANADROMOUS FISH REINTRODUCTION	CCT			75
9502100	OKANOGAN WATERSHED PLANNING	CCT			125
		Subtotal			200
Salmon					
9990012	SALMON RIVER FISH PASSAGE/IRRIGATION IMPROVEMENT	SBT/FSOC			1,300
9401700	IDAHO MODEL WATERSHED HABITAT PROJECTS	Model Watersh	23		
8402300	CAMAS CREEK, IDAHO	USFS	7		
9202603	MODEL WATERSHED STUDIES - LEMHI RIVER BASIN	ID Soil	141		

* Projects with long-term legal agreements or or Endangered Species Act mandated

** Recommended for funding in FY96 from BPA's F&W budget

*** Recommended for funding in FY96 from BPA's ESA budget

**** Not recommended for funding in FY96 from BPA's F&W budget at this time

Anadromous Fish Projects Listed by Program Area

Appendix C.4

Project #	Title	Sponsor	% Estimate**	ESA***	Other****
9405000	SALMON RIVER HABITAT O&M	SBT	253		
8402400	MARSH / ELK / UPPER SALMON RIVER, IDAHO	USFS	47		
9990029	PANTHER CREEK TRAP AND HAUL OPERATION	SBT			900
		Subtotal	471		2,200
Umatilla/Walla Walla					
9990071	ANADROMOUS FISH PASSAGE IMPROVEMENT AT WALLA WALLA IR	CTUIR	100		
9990069	JUVENILE SCREENS AND SMOLT TRAPS AT WALLA WALLA RIVER	CTUIR	90		
9990009	UMATILLA RIVER ADULT FISH PASSAGE AT FEED CANAL DAM	FSOC			250
9990070	RIPARIAN AND FISH HABITAT ENHANCEMENT - WALLA WALLA BASI	CTUIR			150
9406500	PATAHA CREEK MODEL WATERSHED PROJECT	SWCD	19		
8710002	UMATILLA HABITAT IMPROVEMENT (ODFW)	ODFW	190		
8710001	UMATILLA RIVER BASIN ANADROMOUS FISH HABITAT ENHANCEME	CTUIR	293		
8343600	UMATILLA PASSAGE O&M	USBR	281		
8902700	POWER/REPAY O&M FOR USBR CPR PUMPING PROJ	PPL	271		
8902401	EVAL UMATILLA BASIN PRJ - 3-MILE/WEID CANAL SCR	ODFW	240		
		Subtotal	1,483		400
Washington					
9401800	WASHINGTON MODEL WATERSHED HABITAT PROJECTS	Cons Districts			250
9202602	EASTERN WA MODEL WATERSHED DEVELOPMENT PLN PHASE	WS Cons Cm	115		
		Subtotal	115		250
Willamette					
8612400	INSP SERV FOR LITTLE FALL CREEK PASS RE:86-090	ODFW	4		
9990001	WILLAMETTE FALLS FISHWAY RESTORATION AND MODERNIZATION	ODFW			2,125
		Subtotal	4		2,125
Yakima					
9200900	YAKIMA SCREENS - PHASE II - O & M	WDFW	75		
9990006	FISH PASSAGE AND SCREENING FOR TOPPENISH CREEK DIVERSIC	USFWS			295
8607500	LITTLE NACHES PASSAGE	USFS	2		
8506200	PASSAGE IMPROVEMENT EVALUATION	Battelle	281		
9201400	YAKIMA HABITAT ASSESSMENT AND IMPROVEMENT	YIN	234		
		Subtotal	591		295
		Habitat/Tributary Passage Total	7,246	3,000	7,895

Mainstem Passage Projects

Smolt Monitoring

9403300	FISH PASSAGE CENTER	PSMFC	865		
8332300	SMOLT CONDITION & ARRIVAL TIMING AT LWR GRANITE	IDFG	318		

* Projects with long-term legal agreements or or Endangered Species Act mandated

** Recommended for funding in FY96 from BPA's F&W budget

*** Recommended for funding in FY96 from BPA's ESA budget

**** Not recommended for funding in FY96 from BPA's F&W budget at this time

Anadromous Fish Projects Listed by Program Area

Appendix C.4

Project #	Title	Sponsor	96 Estimate**	ESA***	Other****
* 8401400	SMOLT MONITORING AT FEDERAL DAMS	NMFS	655		
* 8712700	SMOLT MONITORING BY NON-FEDERAL ENTITIES	PSMFC	1,237		
* 9008000	COLUMBIA BASIN PIT-TAG INFORMATION SYSTEM (PTAGIS)	PSMFC	983		
9102800	PIT TAGGING WILD CHINOOK	NMFS	313		
8740100	TRAVEL TIME AND SURVIVAL SMOLT PHYSIOLOGY	NBS	465	285	
* 8331900	NEW FISH TAG SYSTEM	NMFS	430		
* 9104000	BONNEVILLE DAM JUVENILE FISH SAMPLING FACILITY	COE		570	
9106400	PIT TAG FACILITIES	COE			0
		Subtotal	5,265	855	0
Water Acquisition					
9104100	IDAHO WATER RENTAL - FLOWS	ID Power			1,000
9305500	WATER PURCHASE ACQUISITION/LEASE FEE/PURCHASE OPT	Skyline Farm		3,600	
9504100	COST SHARE 500 KAF UPPER SNAKE	New Project		2,000	
9304400	EDF WATER ACQUISITION PILOT PROJECT	EDF		125	
9304300	FLOW VOLUME PROVISIONS/SUPPORT	Various		75	
		Subtotal		5,800	1,000
Predation					
* 9007700	SQUAWFISH MANAGEMENT	PSMFC	3,843		
* 9504200	INCREASED PREDATION MEASURES	New Project		0	
* 8200300	PREDATION/DEVELOPMENT OF PREY PROTECTION	NBS	404		
* 9007800	SQUAWFISH MANAGEMENT (SUPPORT)	NBS	400		
		Subtotal	4,647	0	
Mainstem Survival Studies					
* 9302900	SURVIVAL EST FOR PASSAGE THROUGH DAMS/RESERVOIRS	NMFS	748		
9102900	LIFE HISTORY OF FALL CHIN IN COL R (ESA)	NBS	1,053	450	
* 9300800	ALLOWABLE GAS SUPERSATURATION AT DAMS	Watson		0	
* 9105100	ANALYSIS OF REL OF RIVERFLOW TO TRAVEL TIME (ESA)	Univ/WA		0	
* 9301200	EVALUATION OF CARRYING CAPACITY	Battelle	94		
8910700	EPIDEMIOLOGICAL SURVIVAL METHOD	Univ/WA	154		
8741302	ANALYZE HISTORIC DATA FOR JUVENILE/ADULT PROD	Univ/WA	0		
		Subtotal	2,049	450	
Other					
9990005	MAINSTEM COLUMBIA/SNAKE RIVER VIDEO FISH COUNTING	CRITFC			198
9402600	PACIFIC LAMPREY RESEARCH AND RESTORATION PROJECT	CTUIR	335		
9204100	FISH PASSAGE EVALUATIONS	COE	241		
9207100	ASSESS TECH TO IMPROVE MEASRMNT CAPABILITIES (M&E)	Battelle	0		
9301300	TECH ASSISTANCE/REVIEW	SP Cramer	0		
9106600	ICE HARBOR/LOWER GRANITE TRAPPING (CHF) (ESA)				

* Projects with long-term legal agreements or or Endangered Species Act mandated

** Recommended for funding in FY96 from BPA's F&W budget

*** Recommended for funding in FY96 from BPA's ESA budget

**** Not recommended for funding in FY96 from BPA's F&W budget at this time

Anadromous Fish Projects Listed by Program Area

Appendix C.4

Project #	Title	Sponsor	% Estimate**	ESA***	Other****
9990020	REDUCE SHAD IMPACTS ABOVE BONNEVILLE				
* 9504300	TRANSPORTATION EVALUATION	New Project			
		Subtotal	576		198
		Mainstem Passage Total	12,537	7,105	1,198

Other Projects

Databases

8810801	COORDINATED INFORMATION SYSTEM (CIS)	PSMFC	792		
8810803	NORTHWEST ENVIRONMENTAL DATABASE	PSMFC			1,200
		Subtotal	792		1,200

Coordination

8906200	COLUMBIA BASIN FISH AND WILDLIFE AUTHORITY	CBFWF	395		
9990035	ASSISTANCE FOR SHOSHONE-BANNOCK TRIBES' SNAKE RIVER PO	SBT			100
9990011	FERC/FEDERAL TRIBUTARY PROJECT COORDINATION	CBFWF			100
9401300	ANNUAL PROJECTS REVIEW	Various			10
		Subtotal	395		210

Modeling

* 9403100	ANALYTICAL COORDINATION WORKGROUP - PATH	NMFS		793	
* 8910800	COLUMBIA RIVER SALMON PASSAGE MODEL	Univ/WA		900	
* 9203200	LIFE CYCLE MODEL DEVEL/APPLIC TO SSP IN SNAKE RV	USFS		50	
* 9303701	TECHNICAL ASSISTANCE WITH THE LIFE CYCLE MODEL	Paulsen		53	
9504500	COST SHARE IMPROVED HARVEST ESC. MODEL	New Project			100
9504400	COST SHARE BIOLOGICAL ANALYSIS CENTER	New Project			250
		Subtotal		1,796	350

Monitoring and Evaluation

9990014	DEVELOP SUBREGIONAL PLANS	CBFWF			400
9990017	UPDATE SUBBASIN PLANS	CBFWF			200
8907201	SCIENTIFIC REVIEW GROUP SUPPORT	CBFWF	450		
9990015	EVALUATION OF PROGRAM PROGRESS/ANNUAL RESULTS SYMPOS	CBFWF			250
8810800	SYSTEM MONITORING AND EVALUATION PROGRAM (SMEP)				2,000
9504600	EXPENSES FOR UPDATING SUBBASIN PLANS	New Project			100
		Subtotal	450		2,950

Education

9990027	SALMON CORPS	DOE, CRITFC			300
9405900	BPA ENVIRONMENTAL EDUCATION TRAINING/YAKIMA RIVER BASIN	ESD 105	90		
9301100	REGIONAL HABITAT EDUCATION SUPPORT	BPA	12		
9206500	F&W PUBLIC EDUCATION PROJECT	Consultant	6		

* Projects with long-term legal agreements or or Endangered Species Act mandated

** Recommended for funding in FY96 from BPA's F&W budget

*** Recommended for funding in FY96 from BPA's ESA budget

**** Not recommended for funding in FY96 from BPA's F&W budget at this time

Anadromous Fish Projects Listed by Program Area

Appendix C.4

Project #	Title	Sponsor	% Estimate**	ESA***	Other****
9501000	F&W NEWSLETTER DEVELOPMENT GRANT	Noe	0		
9203800	WATERSHED EDUCATION INTERACTIVE DISPLAY FOR OMSI	New Project	0		
9300300	SHERMAN PASS SCENIC BYWAY VISITORS CENTER	USFS	5		
		Subtotal	113		300
BPA Overhead and Support (a)					
8812400	F & W PROGRAM INTERNAL SUPPORT ACTIVITIES	BPA	0		
		Subtotal	0		
Unknown					
8611800	FISH AND WILDLIFE PROGRAM ASSISTANCE EFFORT	Battelle			0
		Subtotal			0
		Other Total	1,750	1,796	5,010
		ANADROMOUS TOTAL	54,341	12,221	29,707

* Projects with long-term legal agreements or or Endangered Species Act mandated

** Recommended for funding in FY96 from BPA's F&W budget

*** Recommended for funding in FY96 from BPA's ESA budget

**** Not recommended for funding in FY96 from BPA's F&W budget at this time

Anadromous Fish Projects by Program Area (Summary)

Appendix C.5

	96 Estimate*	% of GT	ESA**	% of GT	Other***	% of GT
Enforcement						
Enforcement	\$3,317					
	\$3,317	6%				
Fish Propagation						
Clearwater/Nez Perce	\$3,340				\$1,128	
Umatilla	\$6,266					
Yakima	\$9,134					
Grande Ronde/NE OR	\$1,091					
Hood/Deschutes	\$374					
Redfish Lake Sockeye	\$1,449		\$0			
CWT Marking	\$1,828					
Supplementation Research	\$1,954				\$65	
Other Research/Planning	\$4,055		\$320		\$1,511	
Production Placeholders					\$12,900	
	\$29,492	54%	\$320	3%	\$15,604	53%
Habitat/Tributary Passage						
Clearwater	\$30				\$50	
Columbia River Basin	\$164				\$1,500	
Deschutes	\$240				\$61	
Fifteenmile	\$229					
Grande Ronde/Imnaha	\$751				\$700	
John Dav	\$369				\$114	
Juvenile Trib. Passage	\$2,798		\$3,000			
Mid Columbia					\$200	
Salmon	\$471				\$2,200	
Umatilla/Walla Walla	\$1,483				\$400	
Washington	\$115				\$250	
Willamette	\$4				\$2,125	
Yakima	\$591				\$295	
	\$7,246	13%	\$3,000	25%	\$7,895	27%
Mainstem Passage						
Smolt Monitoring	\$5,265		\$855		\$0	
Water Acquisition			\$5,800		\$1,000	
Predation	\$4,647		\$0			
Mainstem Survival Studies	\$2,049		\$450			
Other	\$576				\$198	
	\$12,537	23%	\$7,105	58%	\$1,198	4%
Other						
Databases	\$792				\$1,200	
Coordination	\$395				\$210	
Modeling			\$1,796		\$350	
Monitoring and Evaluation	\$450				\$2,950	
Education	\$113				\$300	
BPA Overhead and Support (a)	\$0					
Unknown					\$0	
	\$1,750	3%	\$1,796	15%	\$5,010	17%
ANADROMOUS TOTAL	\$54,341		\$12,221		\$29,707	

* Recommended for funding in FY96 from BPA's F&W budget

** Recommended for funding in FY96 from BPA's ESA budget

*** Not recommended for funding in FY96 from BPA's F&W budget at this time