

Appendix B

Plates 1-16

Draft

Flathead River

Subbasin Summary

On the trout genetic purity maps, plates 1 through 10, the fish species information for Montana contained in the Montana Rivers Information System was quality checked in 2000 by Montana Fish, Wildlife & Parks and Federal biologists. Electrophoretic analysis, conducted by the University of Montana Wild Trout Genetics Lab, was used in determining the genetic composition of trout populations.

On the stream fisheries classification maps, plates 12 through 16, the habitat and species value was determined using data from the Montana Rivers Information System which was last updated in 1998 by MFWP and federal land management fisheries biologists. Two subcategories were determined for each stream, the habitat and species value and the sport fishery value; the higher of those two values became the final resource value for the stream. These values and their associated data were review by MFWP fisheries biologists and regional managers prior to release of the data"

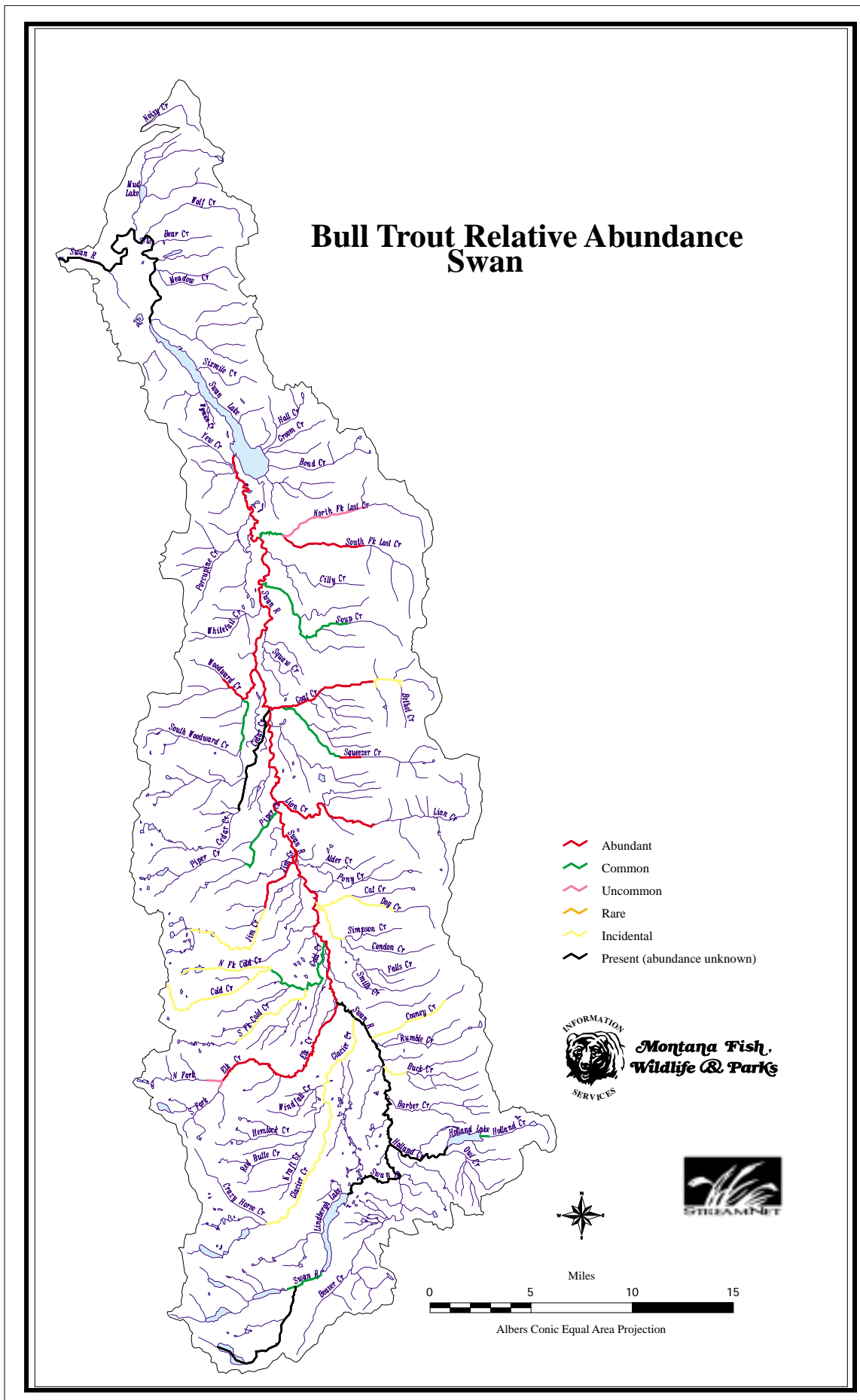


Plate 1. Relative abundance of bull trout in the Swan River drainage.

Bull Trout Relative Abundance Flathead Lake

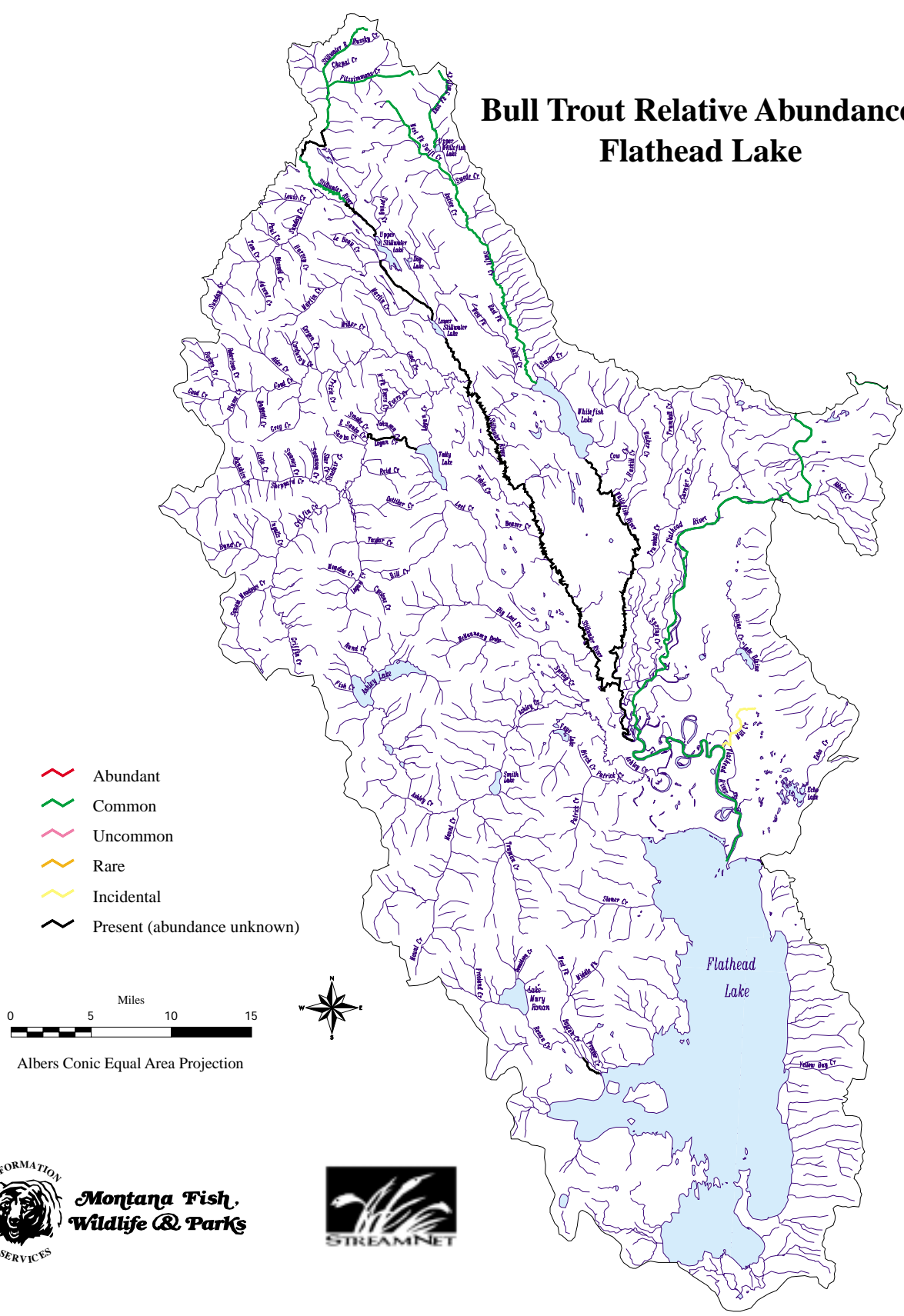


Plate 4. Relative abundance of bull trout in the Flathead Lake portion of the Flathead River drainage.

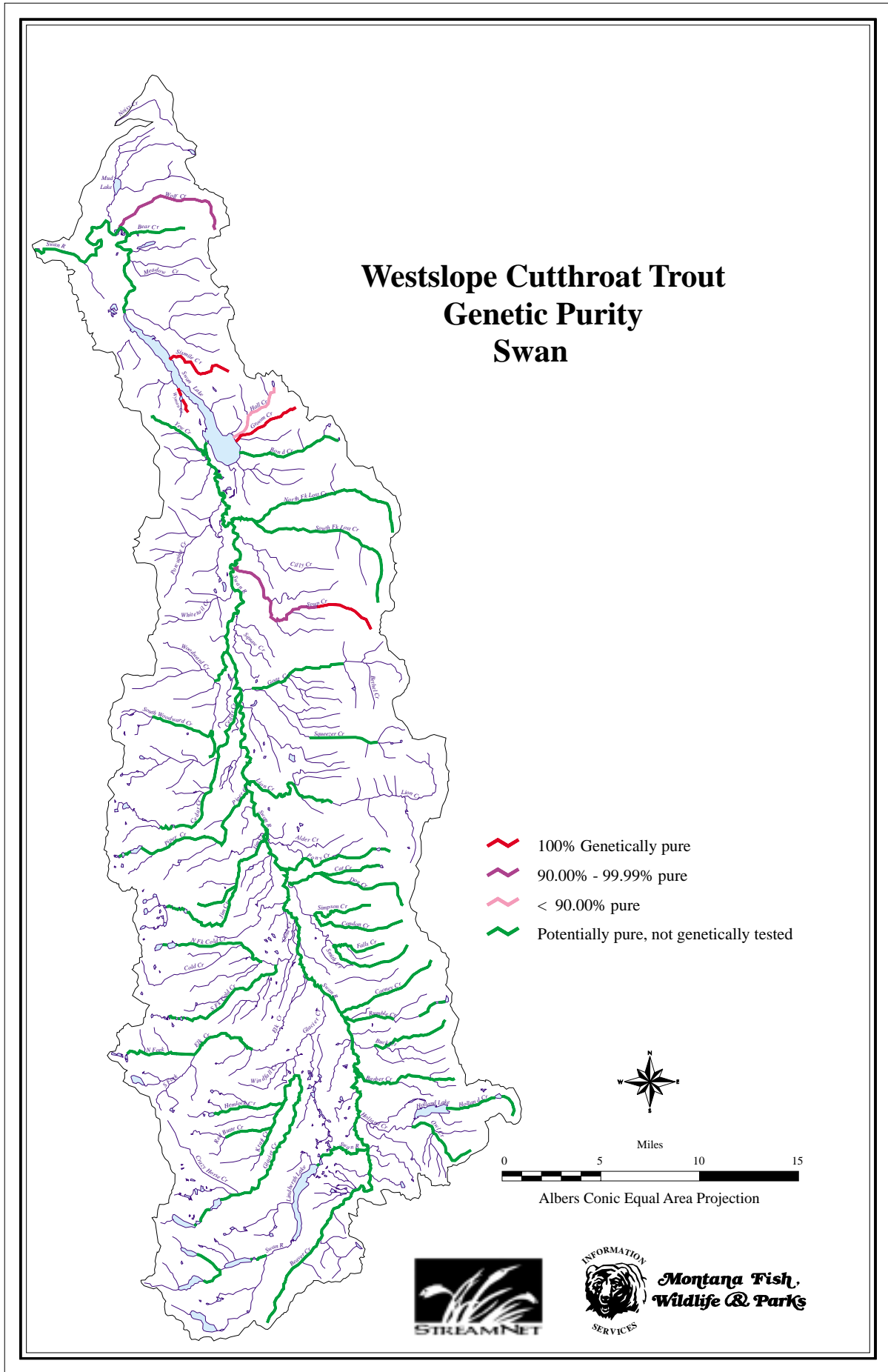
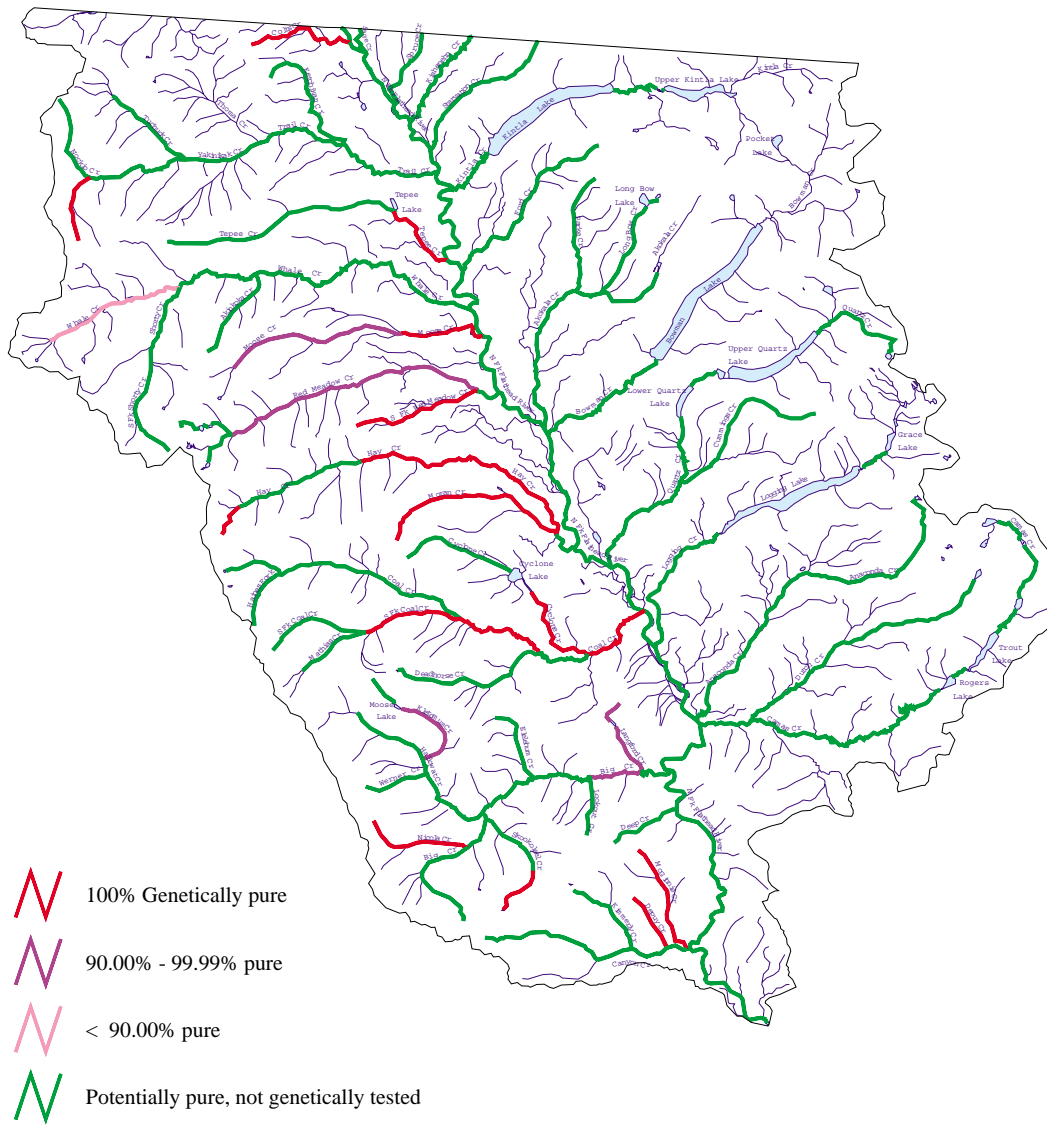


Plate 6. Genetic purity of westslope cutthroat trout in the Swan River drainage.

Westslope Cutthroat Trout Genetic Purity North Fork Flathead



**Montana Fish,
Wildlife & Parks**

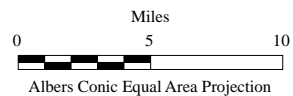
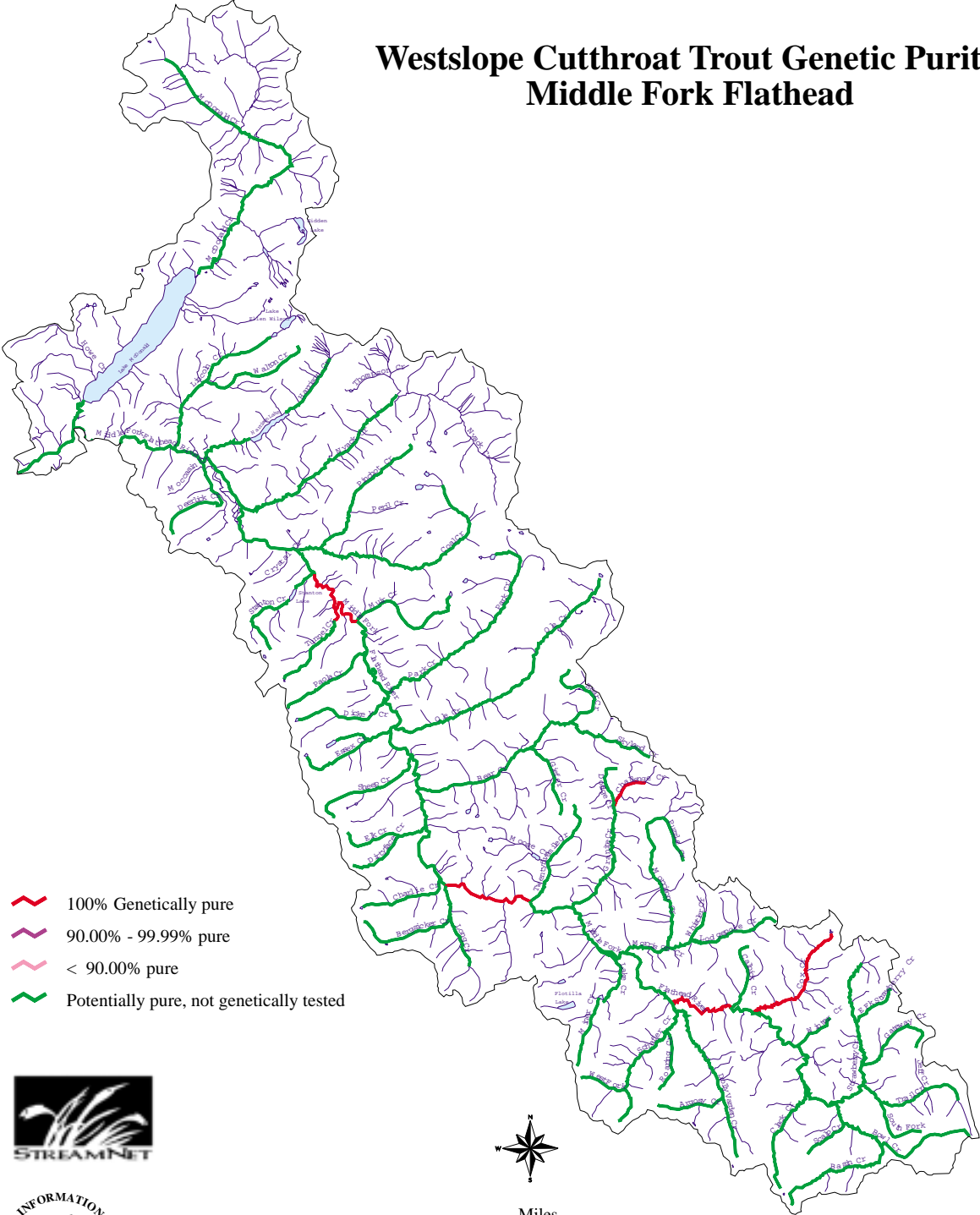


Plate 7. Genetic purity of westslope cutthroat trout in the North Fork Flathead River drainage.

Westslope Cutthroat Trout Genetic Purity Middle Fork Flathead



Montana Fish,
Wildlife & Parks



0 5 10
Miles

Albers Conic Equal Area Projection

Plate 8. Genetic purity of westslope cutthroat trout in the Middle Fork Flathead River drainage.

Westslope Cutthroat Trout Genetic Purity Flathead Lake

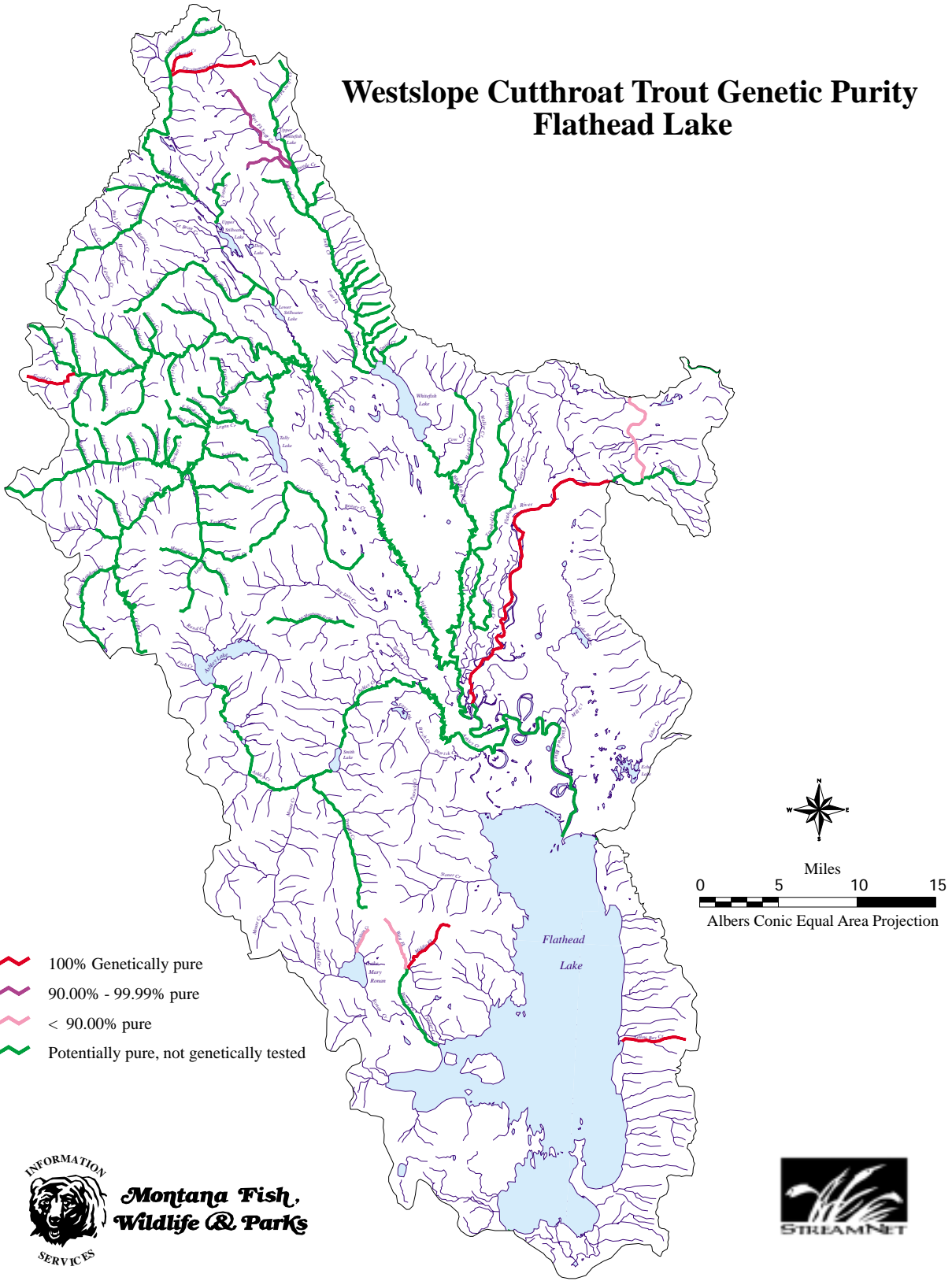


Plate 9. Genetic purity of westslope cutthroat trout in the Flathead Lake portion of the Flathead River subbasin.

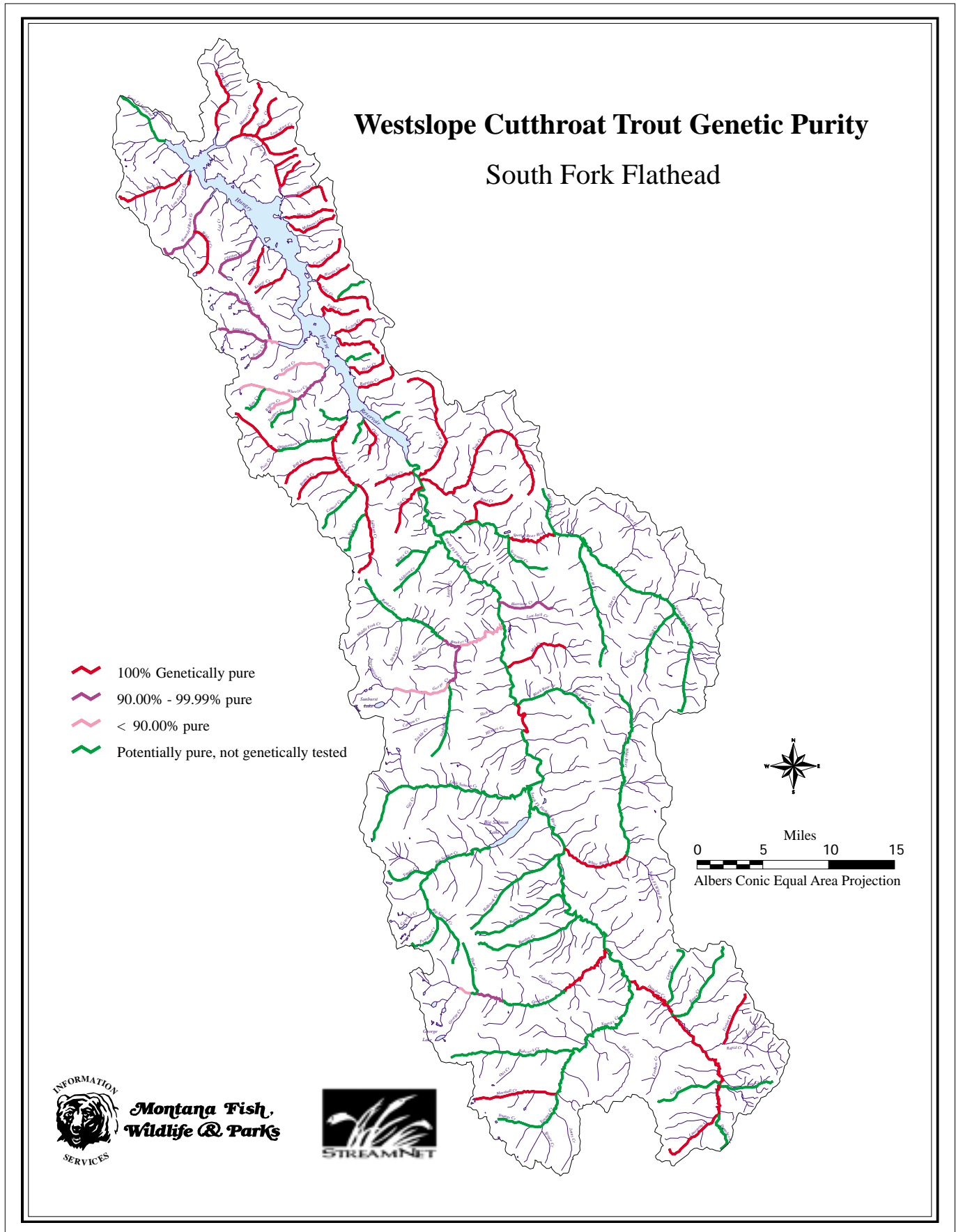
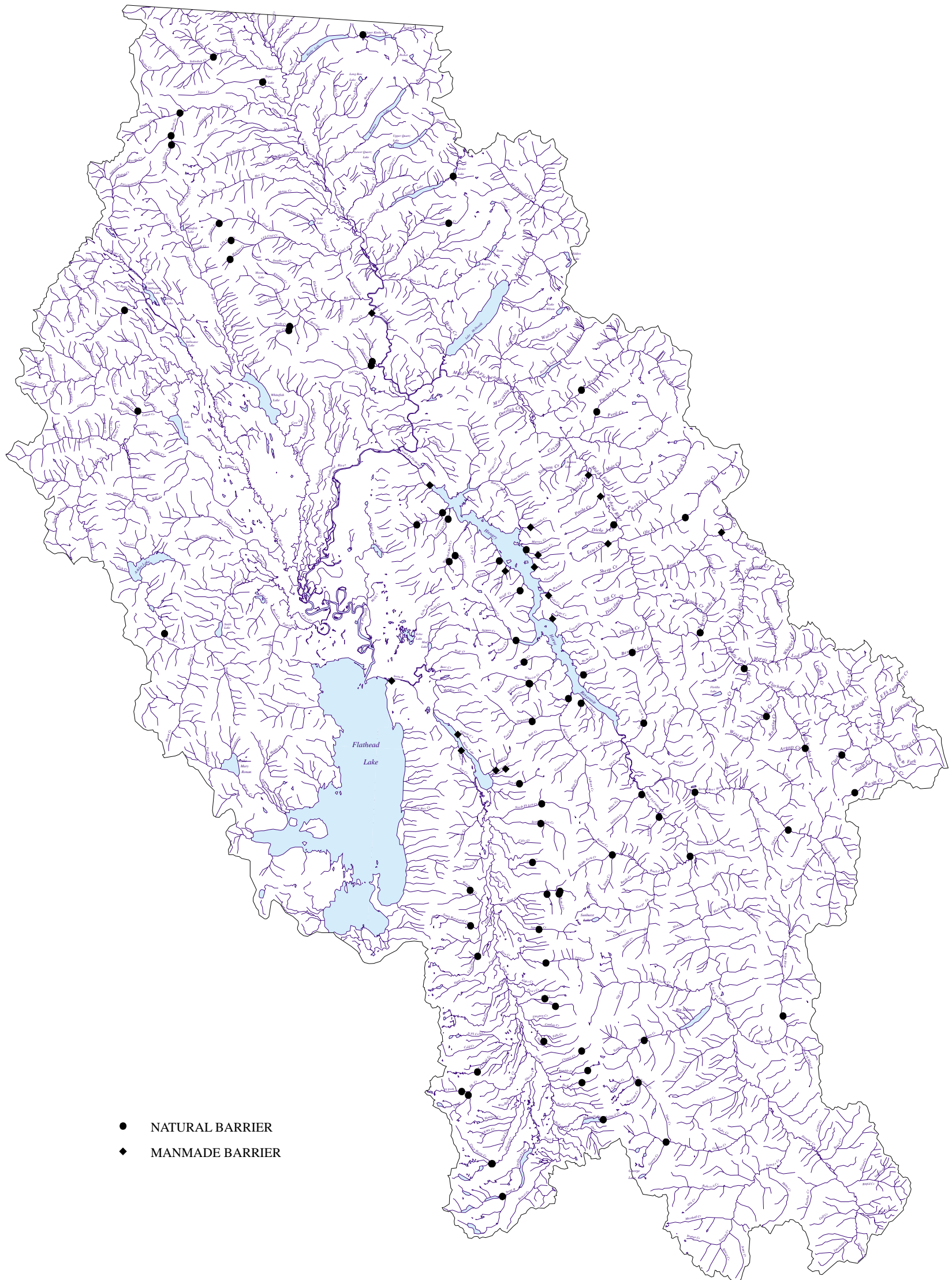
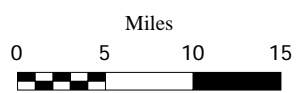


Plate 10. Genetic purity of westslope cutthroat trout in the South Fork Flathead River drainage.

Fish Migration Barriers Upper Flathead



- NATURAL BARRIER
- ◆ MANMADE BARRIER



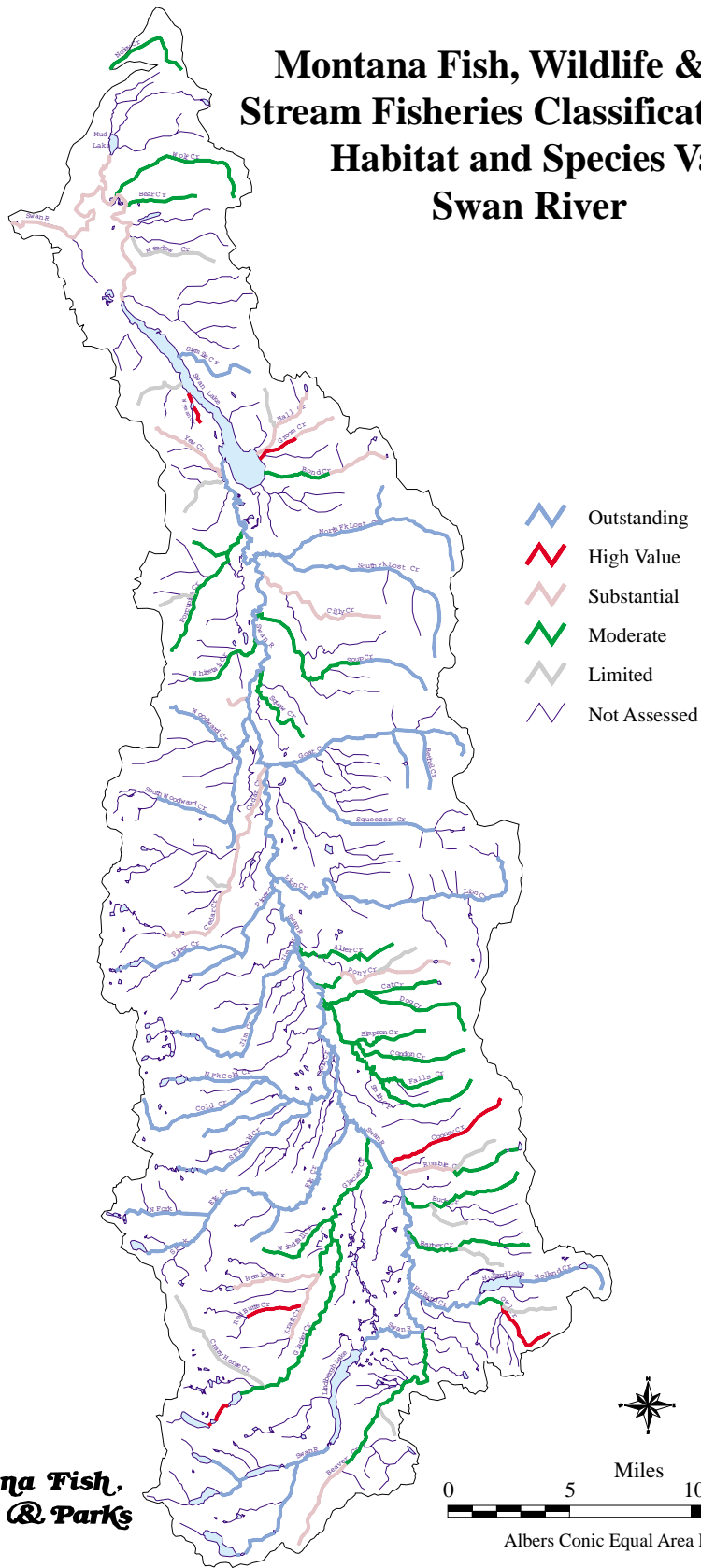
Scale 1: 637 139
Albers Conic Equal Area Projection



**Montana Fish,
Wildlife & Parks**

Plate 11. Barriers to fish migration in the upper part of the Flathead River Subbasin.

Montana Fish, Wildlife & Parks Stream Fisheries Classification, 1999 Habitat and Species Value Swan River



**Montana Fish,
Wildlife & Parks**



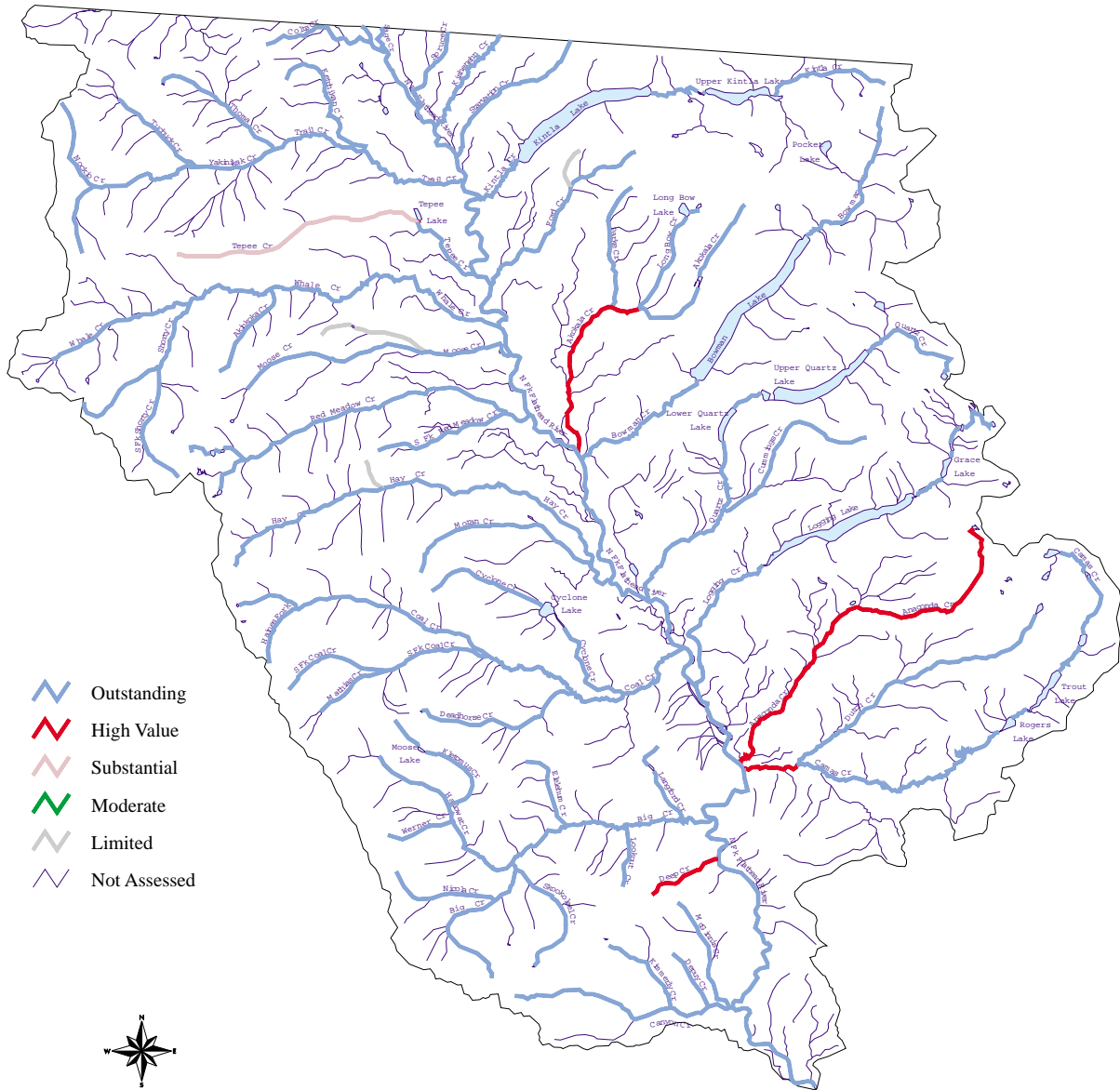
Albers Conic Equal Area Projection

Plate 12. Stream fisheries classification (habitat and species value) Swan River drainage.

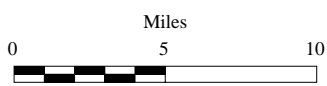
MFWP Stream Fisheries Classification, 1999

Habitat and Species Value

North Fork Flathead River



-  Outstanding
-  High Value
-  Substantial
-  Moderate
-  Limited
-  Not Assessed

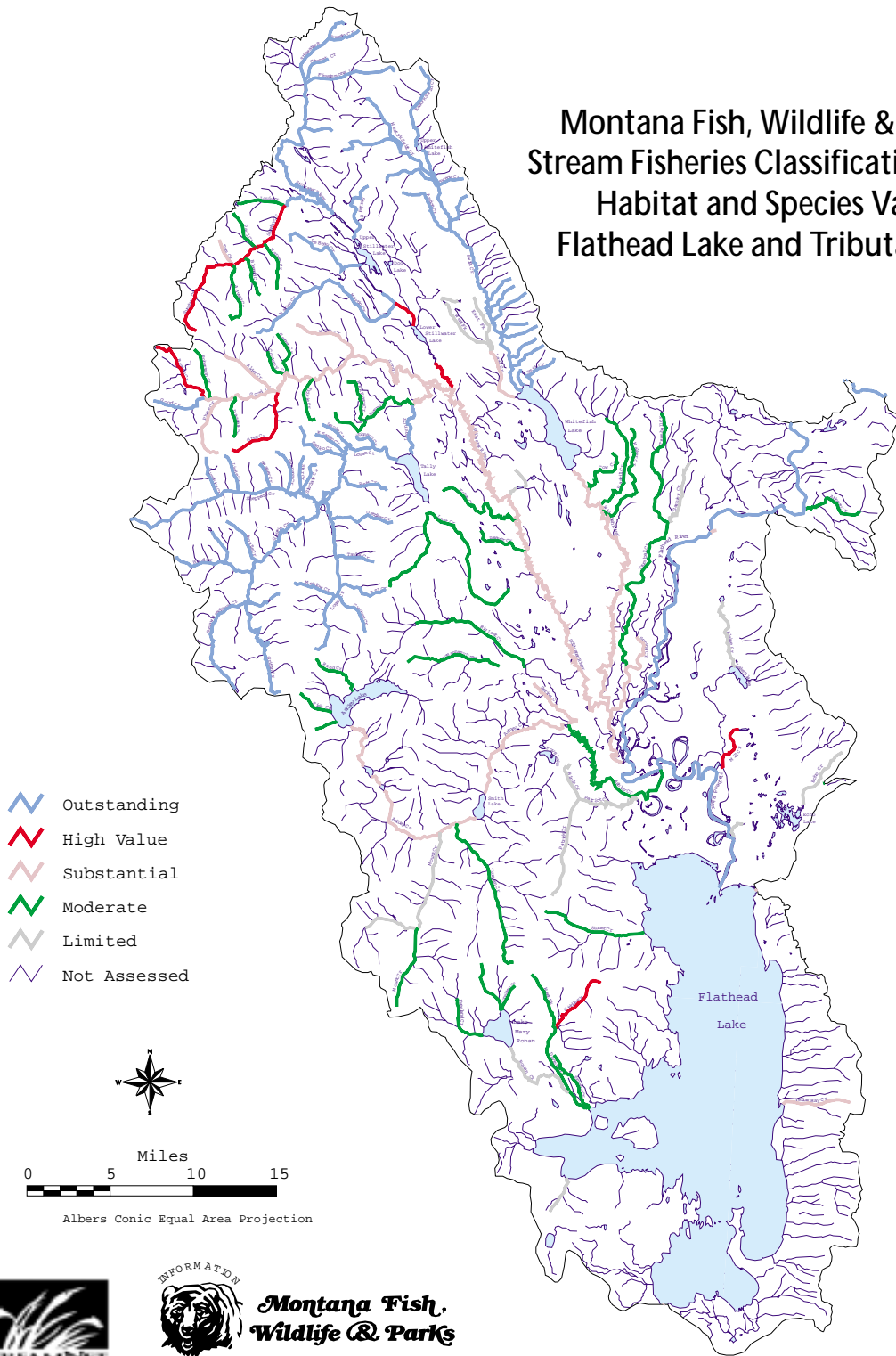


Scale 1: 336 793
Albers Conic Equal Area Projection



Plate 13. Stream fisheries classification (habitat and species value) North Fork Flathead River drainage.

Montana Fish, Wildlife & Parks
 Stream Fisheries Classification, 1999
 Habitat and Species Value
 Flathead Lake and Tributaries



**Montana Fish,
 Wildlife & Parks**

Plate 15. Stream fisheries classification (habitat and species value) Flathead Lake portion of the Flathead River Subbasin.

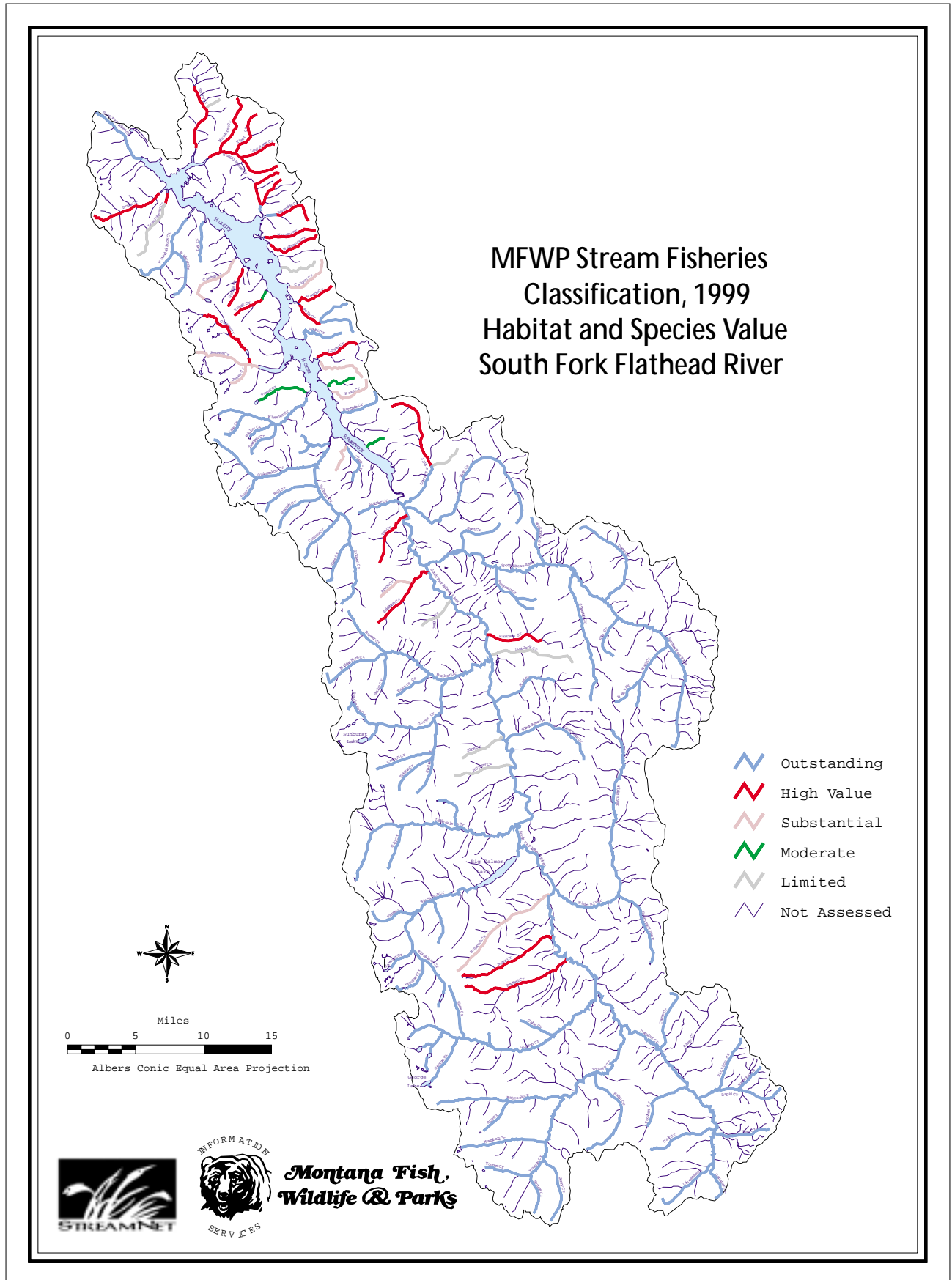


Plate 16. Stream fisheries classification (habitat and species value) South Fork Flathead River drainage.

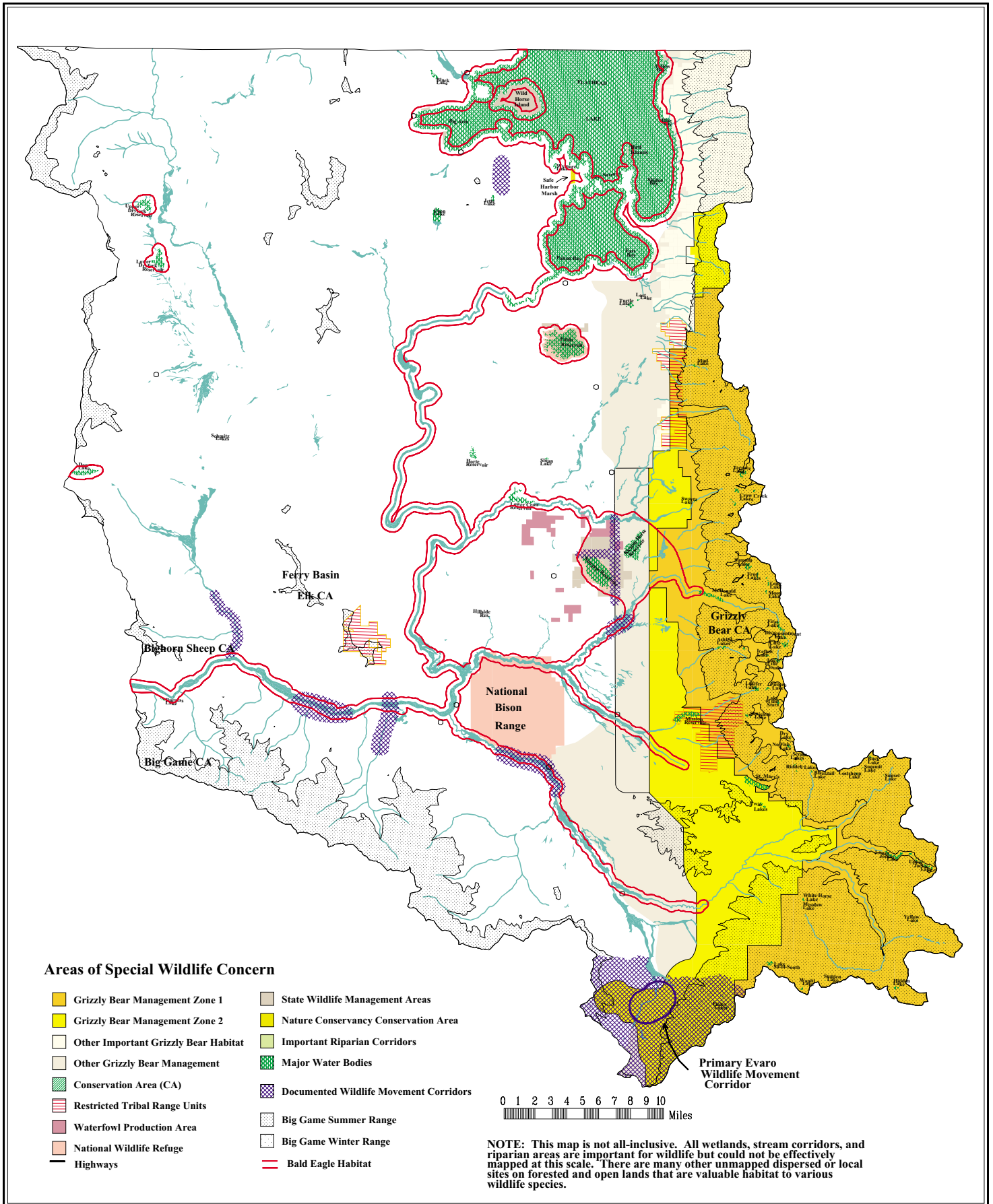


Plate 17. Areas of special wildlife concern on the Flathead Indian Reservation.