



# YAKIMA SCREEN SHOP PROJECT SUMMARY

Project Name: Foghorn Fish Screen

Accounting No.: MI-981490, Project-XB56

PROJECT TYPE: Fish Screening Facility

Date:	November 2001	State \$:	100,000
WRIA:	48.0007	BPA \$:	54,500
Stream:	Methow River	USFWS \$:	147,500
Status:	95% Complete		

## PROJECT DESCRIPTION:

The WDFW YSS received state funding, as well as funding from the U.S. Fish and Wildlife Service and BPA, for the replacement of an obsolete fish screen facility on the Methow River. The WDFW YSS constructed the entire fish screen facility, including screens and all metalwork. WDFW EES designed this new facility for flows from 14 to 20 cubic feet per second. The new facility consists of a concrete structure measuring approximately 55' long, 25' wide, and 6' deep; two 3½' diameter X 10' long electrically driven drum screens; trash rack; security fence; lifting gantry; and 18" diameter HDPE buried bypass pipe approximately 120' long. The new facility was located at the site of the obsolete screen, which was demolished and removed from the premises. Fabrication of the screens and metal work began and was completed in summer 2001. Construction activities commenced during the first week of October 2001, and completed in early November 2001. The lifting gantry and security fencing will be installed in April 2002.

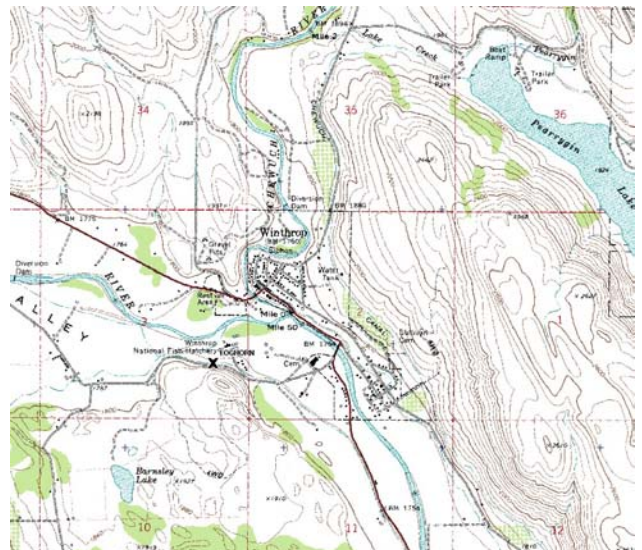


## FACILITY LOCATION:

The site is located approximately 0.6 miles west of S.R. 20 via Wolf Creek road, southwest of the town of Winthrop, Okanogan County, Washington.

48.47225E W Latitude  
120.19092EN Longitude

SE¼ Section 3  
Township 34 North  
Range 21 East



## PROJECT CONSTRAINTS:

As with any project located in the Methow River Basin, inclement weather may impact the timing and completion of a project. Fortunately, the winter of 2002 didn't arrive early, allowing the YSS construction crew access to the site and completion of the majority of the construction work. In addition, the Foghorn Ditch serves both the Foghorn Ditch Company for irrigation needs, and the Winthrop National Fish Hatchery for water necessary for successful propagation of chinook salmon and steelhead. Although the irrigation season had ended at the time of construction, hatchery needs must still be met. Sealing the construction site from water within the ditch proved to be a challenge.

## PROJECT SUCCESSES:

Due to the cut-off of state funding on June 30, 2001, and the availability of BPA funding under the 2001 Action Plan Solicitation for Proposals, this project was able to proceed until the contract for funding from USFWS was in place. Without the availability of these funds from BPA, the project would likely have been delayed until after the 2002 irrigation season next fall.